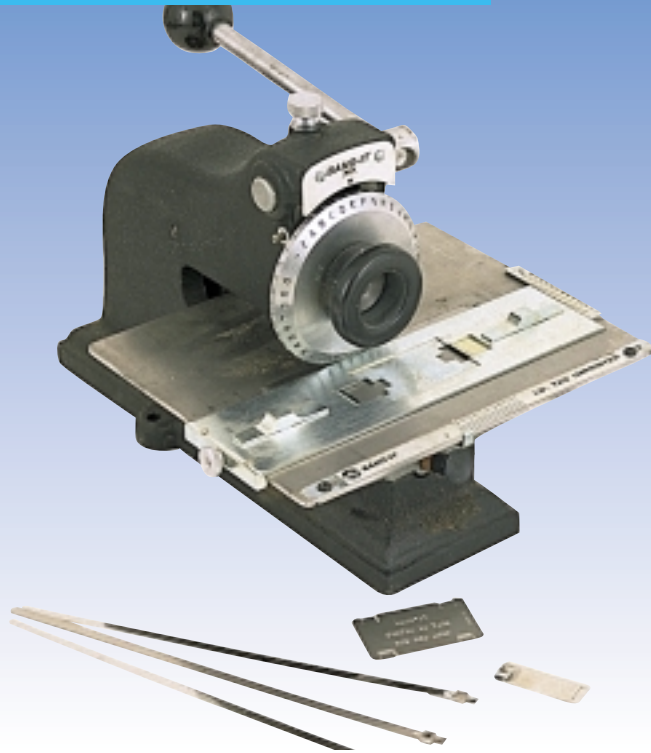


Identification Systems



I.D. Tagging System

Print your own tags in 304 or 316 stainless steel and apply with Tie-Lok Ties. Tag imprinter is available with a choice of character sizes. Imprinter with character wheel weighs 29.5 lbs. (13.4 Kg)

| | Imprinter with: | Cat No. |
|-----|-----------------------|---------|
| ABC | 1/16" character wheel | ID202 |
| ABC | 3/32" character wheel | ID200 |
| ABC | 1/8" character wheel | ID203 |
| ABC | 3/16" character wheel | ID204 |
| ABC | 1/4" character wheel | ID205 |

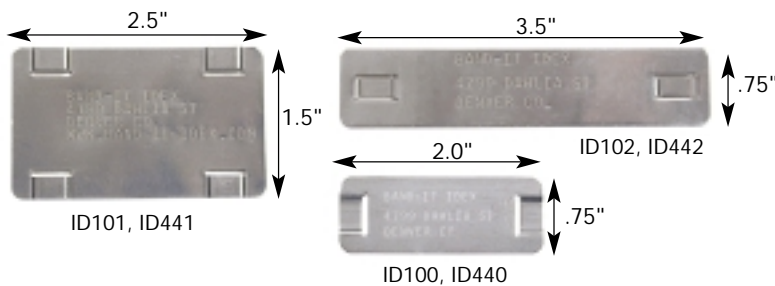
Letter dial kits can also be ordered separately.

| | |
|-----------------------|-------|
| 3/32" letter dial kit | ID290 |
| 1/16" letter dial kit | ID281 |
| 1/8" letter dial kit | ID282 |
| 3/16" letter dial kit | ID283 |
| 1/4" letter dial kit | ID284 |

I.D. Kit ID300

This handy kit contains:

- One Tie-LokTool,
 - 200 (3/4"x 2") I.D. tags,
 - 100 (1 1/2"x 2 1/2") I.D. tags,
 - 100 (3/4"x 3 1/2") I.D. tags,
 - 100 (1/4"x 10") Tie-Loks,
 - 200 (1/4"x 16.5") Tie-Loks and
 - 100 (1/4"x 22.5") Tie-Loks.
- Weight: 21.5 lbs (9.8 Kg)

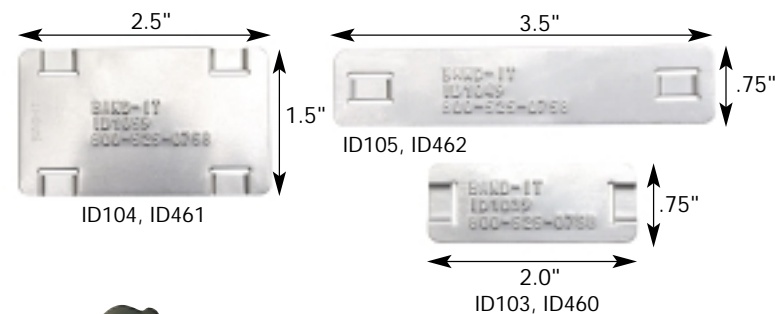


I.D. Tags

| Cat. No. | Thickness | Packaging Weight | |
|-----------------|-----------|------------------|-----|
| | | Lb | Kg |
| 304 S.S. ♦ID100 | .010 .254 | 0.5 | .22 |
| 316 S.S. ID440 | .010 .254 | 0.5 | .22 |
| 304 S.S. ♦ID101 | .015 .381 | 1.2 | .55 |
| 316 S.S. ID441 | .015 .381 | 1.2 | .55 |
| 304 S.S. ♦ID102 | .015 .381 | 0.8 | .36 |
| 316 S.S. ID442 | .015 .381 | 0.8 | .36 |

Customized Embossed Tags

We now offer a customized tag embossing service. Tags are available in 304 or 316 stainless steel in three sizes. Call Denver for details.



| Cat. No. | Thickness | Weight | |
|----------------|-----------|--------|-----|
| | | Lb | Kg |
| 304 S.S. ID103 | .010 .254 | 0.1 | .01 |
| 316 S.S. ID460 | .010 .254 | 0.1 | .01 |
| 304 S.S. ID104 | .015 .381 | 0.2 | .01 |
| 316 S.S. ID461 | .015 .381 | 0.2 | .01 |
| 304 S.S. ID105 | .015 .381 | 0.1 | .01 |
| 316 S.S. ID462 | .015 .381 | 0.1 | .01 |

I.D. Band Guide Kit

Fixture to imprint directly onto Tie-Lok Ties.
Cat. No. ID285 Weight: 0.5 lbs. (.02 Kg)

Stainless Steel Tape Embossing System

With the portable tape embossing tool and a roll of stainless steel tape, you can quickly and easily produce I.D. tags which are then applied with your choice of BAND-IT ties.



| | Cat. No. | Weight |
|---|----------|-----------|
| | | Lbs Kg |
| Hand-held tool for embossing stainless steel I.D. tape | ♦ID400 | 2.57 1.17 |
| S.S. tape: 1/2"(12.7mm) wide, .005"(.127mm) thick, 20'(6M) long | ♦ID405 | .18 .01 |