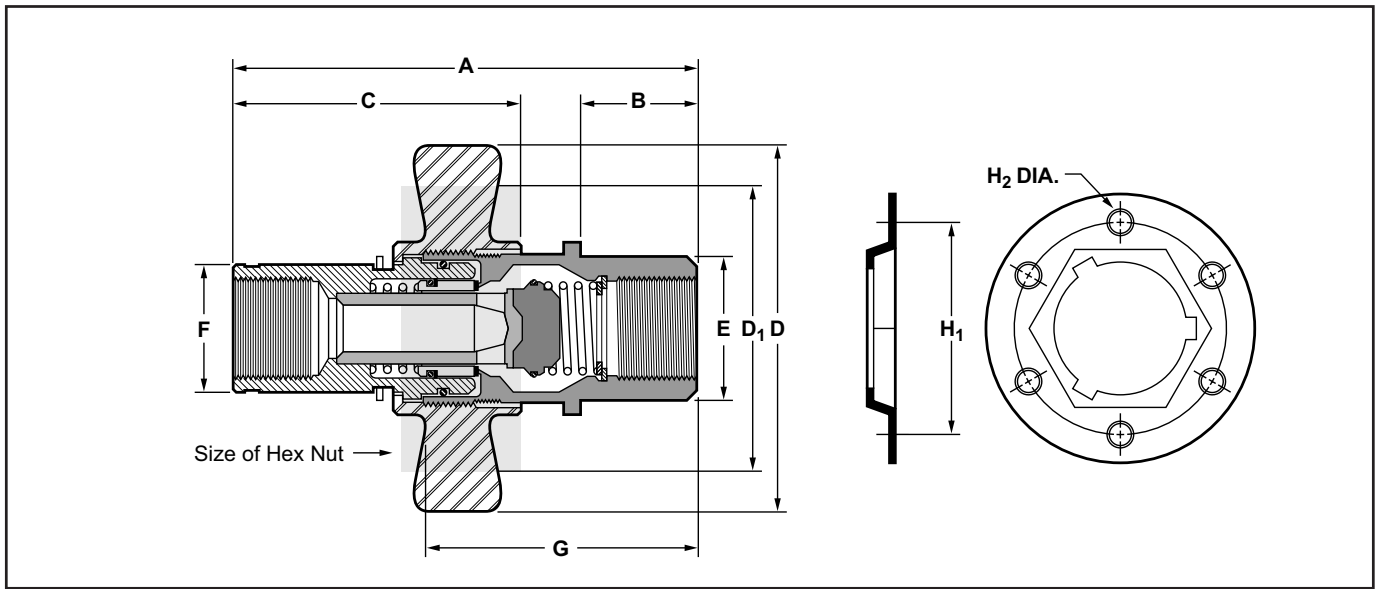


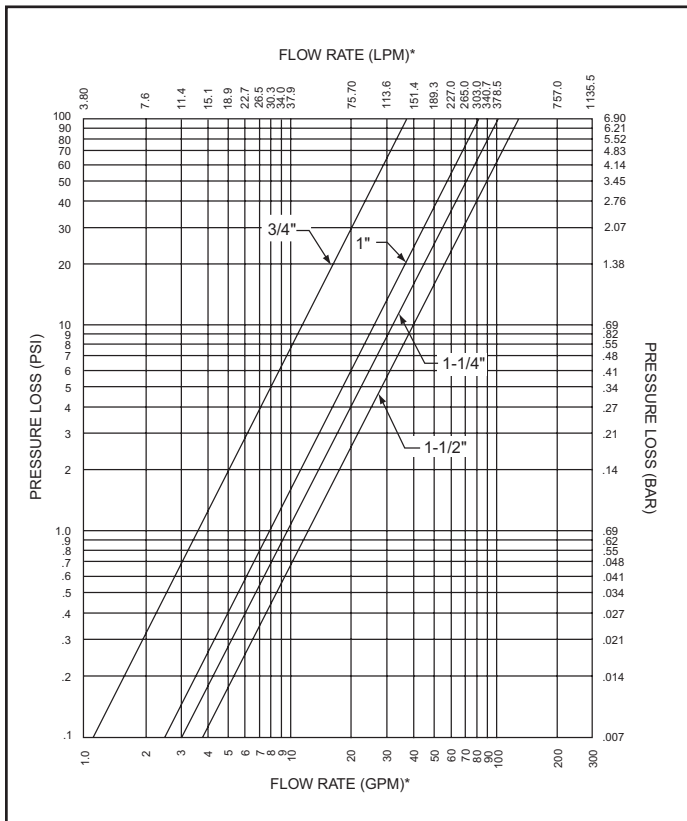
# TECHNICAL AND DIMENSIONAL INFORMATION



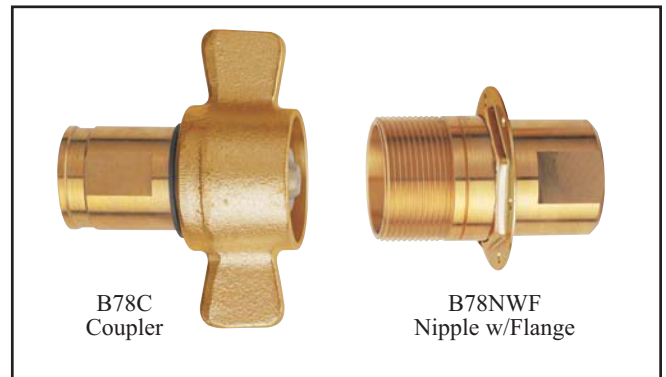
## DIMENSIONS

SIZE	A		B		C		D		HEX D <sub>1</sub>		E		F		G		H <sub>1</sub>		H <sub>2</sub>	
	in	mm	in	mm	in	mm	in	mm	in	mm	in	mm	in	mm	in	mm	in	mm	in	mm
3/4"	5.02	127.51	1.66	42.26	2.93	74.42	4.10	104.14	1-3/4	44.45	1.44	36.58	1.25	31.75	3.11	79.00	2.13	54.10	.201	5.11
1"	5.45	138.43	1.38	35.05	3.44	87.38	4.50	114.30	2-1/8	53.98	1.74	44.20	1.57	39.88	3.24	82.30	2.38	60.45	.201	5.11
1-1/4"	6.28	159.51	1.78	45.21	3.92	99.57	5.23	132.84	2-1/2	63.50	2.08	52.83	1.89	48.00	3.73	94.74	2.63	66.80	.201	5.11
1-1/2"	6.54	166.12	1.63	46.40	4.09	103.89	5.25	133.35	2-3/4	69.85	2.45	62.23	2.18	55.37	4.13	104.90	3.25	82.55	.281	7.14

## FLOW CHART



## 78 SERIES WITH WING NUT ASSEMBLY



## 78 SERIES WITH HEX NUT ASSEMBLY

