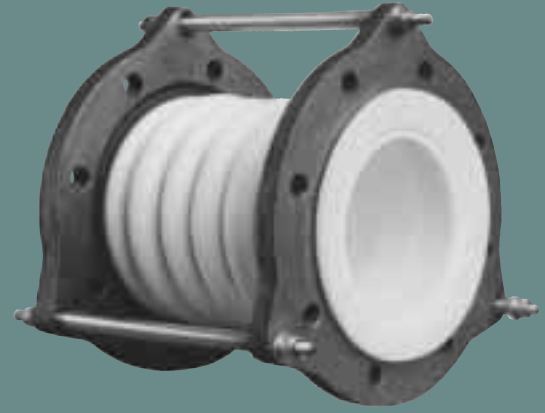


# PROCO™

## STYLE 4406



### six convolution heavy-duty molded PTFE bellows

TABLE 5

NOMINAL SIZE I.D.	NEUTRAL LENGTH INCHES	MOVEMENT CAPABILITIES BASED ON SIX CONVOLUTION DESIGN			SPRING RATE CAPABILITY BASED ON 1" OF MOVEMENT AT ZERO PRESSURE CONDITIONS			EXPANSION JOINT FLANGE DRILLING						PRESSURE AT TEMPERATURE (PSIG) @ °F								VACUUM Hg at Temp.	WEIGHT / LBS		
		± AXIAL (ΔX) MOVEMENT IN	LATERAL (ΔY) DEFLECTION IN	ANGULAR DEFLECTION DEG.	FORCE LBS PER 1" RATED EXTENSION LB/IN	FORCE LBS PER 1" RATED COMPRESSION LB/IN	FORCE LBS PER 1" RATED LATERAL DEFLECTION LB/IN	# HOLES	THREADED HOLE SIZE	BOLT CIRCLE FLANGE "A"	FLANGE THICKNESS	NOMINAL FLANGE DIAMETER	LIMIT BOLT DIAMETER	BOLT CIRCLE LIMIT BOLT "B"	LIMIT BOLT "EAR" O.D.	All units are hydrostatically tested at 1.5 times rated pressure after manufacturing.									
																70°	100°	150°	200°	250°	300°			350°	400°
1.00	3.622	.945	.472	38			4	1/2-13	3.125	.551	4.250	.250	5.300	6.102	232	183	150	104	90	75	62	50	NOT	4	
1.25	4.528	1.181	.591	36			4	1/2-13	3.500	.551	4.625	.250	6.700	7.480	232	183	150	104	90	75	62	50		6	
1.50	4.528	1.181	.591	36			4	1/2-13	3.875	.630	5.000	.250	6.700	7.480	232	183	150	104	90	75	62	50		8	
2.00	4.528	1.260	.669	32			4	5/8-11	4.750	.630	6.000	.250	7.300	8.071	232	183	150	104	90	75	62	50		9	
2.50	5.315	1.496	.748	30			4	5/8-11	5.500	.630	7.000	.250	8.100	8.858	232	183	150	104	90	75	62	50	DESIGNED	11	
3.00	6.496	1.614	.787	28			4	5/8-11	6.000	.630	7.500	.250	8.700	9.449	232	183	150	104	90	75	62	50		13	
4.00	6.496	1.654	.827	27			8	5/8-11	7.500	.630	9.000	.250	9.400	10.236	232	183	150	104	90	75	62	50	FOR	15	
5.00	6.890	1.693	.827	23			8	3/4-10	8.500	.630	10.000	.375	11.000	11.417	232	183	150	104	90	75	62	50		26	
6.00	7.087	1.732	.866	19			8	3/4-10	9.500	.709	11.000	.375	12.400	13.583	232	183	150	104	90	75	62	50	VACUUM	26	
8.00	7.874	1.772	.866	17			8	3/4-10	11.750	.709	13.500	.375	14.600	15.748	232	183	150	104	90	75	62	50		36	
10.00	8.071	1.772	.906	15			12	7/8-9	14.250	.709	16.000	.375	16.700	17.913	232	183	150	104	90	75	62	50	SERVICE	55	
12.00	8.268	1.850	.906	15			12	7/8-9	17.000	.709	19.000	.375	19.700	21.260	232	183	150	104	90	75	62	50		67	
14.00	8.268	1.890	.945	14			12	1-8	18.750	.787	21.000	.375	22.200	22.244	232	183	150	104	90	75	62	50	SERVICE	82	
16.00	8.661	1.969	.984	14			16	1-8	21.250	.787	23.500	.375	24.300	25.000	232	183	150	104	90	75	62	50		121	
18.00	8.661	1.969	.984	12			16	1 1/8-7	22.750	.866	25.000	.375	25.800	27.362	232	183	150	104	90	75	62	50	145		
20.00	8.858	2.008	.984	12			20	1 1/8-7	25.000	.866	27.500	.375	28.500	29.134	232	183	150	104	90	75	62	50	168		
22.00	8.858	2.047	1.024	11			20	1 1/4-7	27.250	.945	29.500	.375	30.500	31.890	232	183	150	104	90	75	62	50	203		
24.00	9.055	2.047	1.024	10			20	1 1/4-7	29.500	.945	32.000	.375	32.900	34.646	232	183	150	104	90	75	62	50	249		

Larger diameters, custom lengths, and performance requirements available upon request.

Pressure Rating Note:

316 Stainless Steel Anti-Squirm Flanges are available for higher pressure applications. (See Back Cover.)

MATERIALS OF CONSTRUCTION	
DESCRIPTION	STYLE 4406
BELLOWS	WHITE PTFE
FLANGES	DUCTILE IRON
REINFORCING RINGS	304 SS
LIMIT BOLTS	CARBON STEEL
NUTS	CARBON STEEL
INSULATING SLEEVES	POLYETHYLENE
WASHERS	CARBON STEEL / NYLON