

Introduction

The 30° flare, metric thread interface, also known as the Komatsu style flare fitting, is one of the most common specialized OEM mobile equipment fittings in the marketplace. Parker offers a line of caps, plugs and conversion adapters to mate with this specialty connection. Parker's line of products is designated as "KA" adapters.

The Komatsu style connection is generally rated at 4000 psi (280 kg/cm² or 27.5 Mpa). Parker's caps, plugs and conversion adapters are rated at the full pressure rating in sizes 4-16, with slight pressure reductions in the less common sizes of -20 and -24.

Parker's offering of Komatsu style adapters allow for more aftermarket flexibility. Parker's caps and plugs enable technicians to protect critical sealing surfaces of hoses and adapters from damage and contamination. This protection is important during testing, repair and/or implement installation and removal.

Parker's line of Komatsu style conversion adapters are ideal for emergency situations, field repair, or "plumbing in" hydraulic attachments and options. Parker's exclusive swivel nut design minimizes the sealing surface damage to mating components.

Design and Construction

Parker's line of Komatsu style fitting is sold only as a hose adapter and thus tube nuts and sleeves are not available. The adapter consists of a single body. The mating hose swivel mates directly to the 30° nose of the adapter. This simple, metal-to-metal connection provides a very effective seal between the fitting nose and the hose swivel seat.

The Komatsu style adapter offers the traditional advantages of the 37° flare fitting but incorporates the following differences:

- 1) 30° nose flare
- 2) Metric threads with 1.5 mm pitch
- 3) Used only as a hose adapter
- 4) Heavy duty crimp nut for higher assembly torques

Due to the prevalent field repair needs of mobile equipment and relative simplicity of the Komatsu style fitting, several manufacturers offer a similar product line. Even though some manufacturers conform to the same dimensional standards, there are significant performance advantages to Parker's product offering due to higher integrity manufacturing methods and Parker's commitment to quality.

Materials Specifications

Komatsu style components are manufactured using state-of-the-art equipment and manufacturing technologies to assure construction integrity, highest strength, long service life and the highest quality. At the heart of the Komatsu Style product line is the finest raw materials and manufacturing technologies as outlined in [Table K1](#) and discussed below:

Komatsu Style Adapter Bodies: Komatsu style fittings are manufactured in five configurations. All straight bodies are manufactured from cold drawn bar stock.

Komatsu Style Crimp Swivel Nuts: Komatsu style crimp nuts are machined from cold drawn barstock.

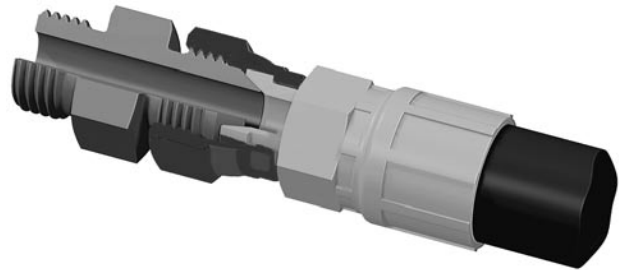


Fig. K1 – Cutaway of Komatsu Style Adapter

Komatsu Style Adapters	Steel
	Type
Bodies	12L14
Crimp Nuts	1215 or 1018

Table K1 – Standard Material Specifications for Komatsu Style Adapters

Note: On request, Komatsu style fittings can be furnished in materials other than those shown above.

Finish: Zinc with yellow chromate (being changed to zinc chromium 6 free) is used on all standard steel products.

Dimensions and pressures for reference only, subject to change.