

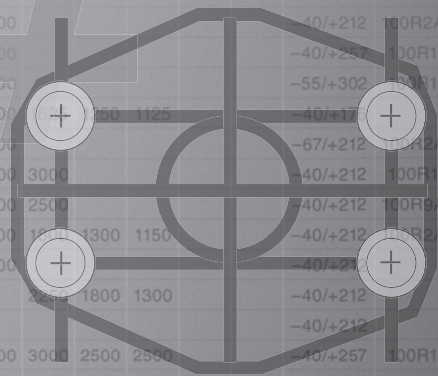


# Technical

# TECHNICAL

421WC	1-braid, wire	2750	2250	2000	1250	1000	625	500	375	-40/+257							
421	1-braid, wire	2750	2250	2000	1500	1250	1000	625	500	375	-50/+302	100R1AT					
482TC/ST	1-braid, wire	3250	3250	3000	2500	2000	1750	1275			-40/+212	100R1AT	1436-1-1SN	853-1SN			
431	2-brands, wire	5000	4250	4000	3500	2750	2250	2000			-40/+212	100R2AT					
431	2-brands, wire	5000	4250	4000	3500	2750	2250	2000			-40/+257	100R16					
304	2-brands, wire	5000	4000	3500		2250	2000				-55/+302	100R16					
451TC/ST	1-braid, wire	3000	3000	3000	3000	3000	3000	3000			-67/+212	100R2AT					
341	4-spiral, wire		4500	4000		3000	3000	2500			-40/+212	100R9AT					
302/301	2-brands, wire	5800	5000	4750	4000	3600	3100	2400	1800	1300	1150	-40/+212	100R2AT	1436-1-2SN			
471TC/ST	2-brands, wire	5800	5000	4250	3625	3125	2500				-40/+212	100R16	11237-1-2SC	857-2SC			
472TC	2-brands, wire								1800	1300		-40/+212					
351TC/ST	2-brands, wire	4000	4000	4000	4000	4000	4000				-40/+212						
721/721TC	4-spiral, wire		4000	4000	4000	4000	4000	3000	2500	2500		-40/+257	100R12	3862-1-R12	856-R12		
721ST	4-spiral, wire		4000	4000	4000	4000	4000	3000			-40/+257	100R12	3862-1-R12	856-R12			
772TC/ST	4-spiral, wire		4000	4000	4000	4000	4000	3000	2500	2500	-40/+257	100R12	3862-1-R12	856-R12			
774	4-spiral, wire							4000	4000	3000	2500	2500	-40/+176				
711	4-spiral, wire							3000	3000		-40/+212	100R11					
781/78C	4-spiral, wire							5000	5000	5000	-40/+257	100R13	3862-1-R13	856-R13			
782TC/ST	4-spiral, wire							5000	5000	5000	-40/+257	100R13	3862-1-R13	856-R13			
701	6-spiral, wire		6000	5000							-40/+212		3862-1-4SP	856-4SP			
731	6-spiral, wire							700	420		-40/+212		3862-1-4SH	856-4SH			
791TC	6-spiral, wire							600	600		-40/+257	100R15	3862-1-R15				
792TC/ST	6-spiral, wire							600			-40/+257	100R15	3862-1-R15				
761	6-spiral, wire							8000			-40/+257						
JK	2-brands, wire	10500		10100							-40/+120						
811 with HC/TB	1-spiral wire					100	70	50			-40/+212						
811 with HC/81	1-braid, 1-spiral									62	62	-40/+212	100R4				
811 with 81/DB	1-braid, 1-spiral									200	150	100	-40/+212	100R4			
811HT with HC/TB	1-braid, 1-spiral wire					100	70	50	50	50	-40/+212						
811HT with HC/81	1-braid, 1-spiral wire									62	62	-40/+212					
811HT with 81/DB	1-braid, 1-spiral wire					300	250	200	150	100	-40/+212						
881 with HC/TB	2-braid, 1-spiral wire					100	70	50	50	50	-40/+212						
881 with 81	2-braid, 1-spiral wire										-40/+212						
881 with 43/81/DB	2-braid, 1-spiral wire					300	250	200	150	100	-40/+212						
804	1-braid, wire		150	150		150					-40/+212						
801	1-braid, wire		250	250		250					-40/+212						

Comprehensive information that helps you connect with the right hose and fittings. Visit [www.parker.com](#) for the latest technical data.



Before You **SPEC** it,

**S T A M P** it.

Size

Application

Pressure

EN

UHG

SAE

ISO