

DIN and ISO Metric Ports

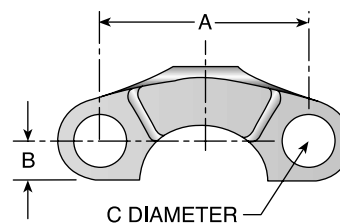
DIN (German) and ISO (International Organization for Standardization) flange heads are the same as SAE flange heads. By comparison, the ports have the same configuration except that the DIN and ISO Type I ports accept metric bolts. This requires special flange halves in most sizes.

| SAE J518 | DIN 20078 | ISO 6162 Type I |
|----------|-----------|----------------------|
| Code 61 | Form R | 3,5 to 35 MPa Series |
| Code 62 | Form S | 35 to 40 MPa Series |

M1H

DIN (ISO) Flange Half

| # Part Number | DIN Flange Size | ISO Flange Size | A mm | B mm | C mm | Maximum Working Pressure | |
|---------------|-----------------|-----------------|------|------|------|--------------------------|------|
| | | | | | | psi | MPa |
| M1H-8 | 8 | 13 | 38 | 8 | 9 | 5,000 | 34,5 |
| M1H-12 | 12 | 19 | 48 | 10 | 11 | 5,000 | 34,5 |
| M1H-16 | 16 | 25 | 52 | 12 | 11 | 5,000 | 34,5 |
| M1H-20 | 20 | 32 | 59 | 14 | 11 | 4,000 | 27,6 |
| M1H-24 | 24 | 38 | 70 | 17 | 13.5 | 3,000 | 20,7 |
| M1H-32 | 32 | 51 | 78 | 21 | 13.5 | 3,000 | 20,7 |

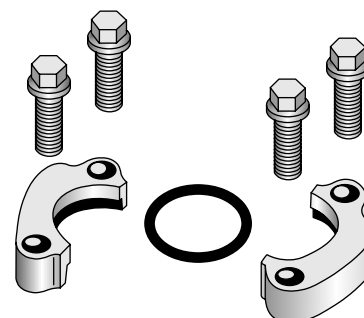


Note: High pressure applications also require the use of Code 62 Flange End hose fittings.

M1M1HK

DIN (ISO) Flange Kit (Code 61)

| # Part Number | DIN Flange Size | ISO Flange Size | Maximum Working Pressure | | (2) Flange Halves | O-Ring | (4) Bolts | | (4) Washers |
|---------------|-----------------|-----------------|--------------------------|------|-------------------|----------|-----------|-----------|-------------|
| | | | psi | MPa | | | Thread mm | Length mm | |
| M1M1HK-8 | 8 | 13 | 5,000 | 34,5 | M1H-8 | 711510-6 | M8x1.25 | 30 | 10 |
| M1M1HK-12 | 12 | 19 | 5,000 | 34,5 | M1H-12 | 711510-5 | M10x1.50 | 30 | 10 |
| M1M1HK-16 | 16 | 25 | 5,000 | 34,5 | M1H-16 | 711510-4 | M10x1.50 | 30 | 10 |
| M1M1HK-20 | 20 | 32 | 4,000 | 27,6 | M1H-20 | 711510-3 | M10x1.50 | 40 | 10 |
| M1M1HK-24 | 24 | 38 | 3,000 | 20,7 | M1H-24 | 711510-2 | M12x1.75 | 40 | 12 |
| M1M1HK-32 | 32 | 51 | 3,000 | 20,7 | M1H-32 | 711510-1 | M12x1.75 | 40 | 12 |
| M1M1HK-40 | 40 | 64 | 2,500 | 17,2 | M1H-40 | 711510-7 | M12x1.75 | 45 | 12 |



Hose
A

Fittings
B

Equipment
C

Accessories
D

Technical
E