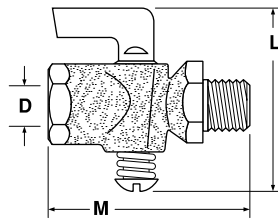


Ground Plug Shutoff V402P

Female Pipe to Male Pipe
 Temperature Range: +32° to +125° F

PART NO.	FEMALE PIPE THREAD	PIPE THREAD	L	M	FLOW DIA. D
V402P-2-2	1/8	1/8	1.89	1.73	.218
V402P-4-4	1/4	1/4	1.89	1.85	.218
V402P-6-6	3/8	3/8	2.34	2.21	.245

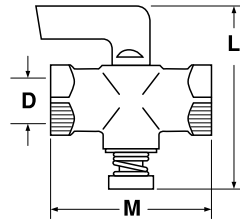


Ground Plug Shutoff V403P

Female Pipe to Female Pipe
 Temperature Range: +32° to +125° F

PART NO.	FEMALE PIPE THREAD	L	M	FLOW DIA. D
V403P-2-2	1/8	1.90	1.51	.188
V403P-4-4	1/4	1.90	1.65	.188
V403P-6-6*	3/8	2.25	2.00	.250

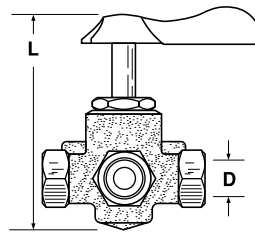
*Made from extruded bar stock



Three-way valve V406P

Female Pipe three ends
 Temperature Range: -40° to +180° F

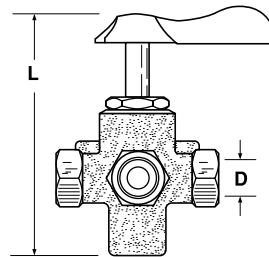
PART NO.	PIPE THREAD	L	FLOW DIA. D
V406P-4	1/4	3.10	.281



Four-way valve V407P

Female Pipe four ends
 Temperature Range: -40° to +180° F

PART NO.	PIPE THREAD	L	FLOW DIA. D
V407P-4	1/4	3.30	.281



Ground Plug Shutoff DC601

Temperature Range: +32° to +125° F

PART NO.	PIPE THREAD	L	M	FLOW DIA. D
DC601-2	1/8	1.90	1.40	.170
DC601-4	1/4	1.90	1.52	.170
DC601-6	3/8	2.26	1.74	.281
DC601-8	1/2	2.29	1.82	.281

