

Mill Hose - White

Ideal for open end discharge applications.

Not intended for fire fighting service.

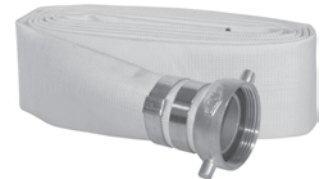
- Outer construction: single jacket, all synthetic
- Tube construction: black, extruded synthetic rubber
- Working Pressure: **112 PSI**
- Coupled with NPSH Female and Male King Short Shank Couplings.
- Preformed clamps, aluminum shank with brass pin lug swivel nut.

Thread NPSH	Number of Clamps on assembly	Length	Dixon Part #
1½"	2	25'	M15-25KAS
1½"	2	50'	M15-50KAS
2"	2	25'	M20-25KAS
2"	2	50'	M20-50KAS
2½"	4	25'	M25-25KAS
2½"	4	50'	M25-50KAS
3"	4	25'	M30-25KAS
3"	4	50'	M30-50KAS



- Coupled with NST (NH) Female and Male King Short Shank Couplings.
- Preformed clamps, aluminum shank with brass pin lug swivel nut.

Thread NPSH	Number of Clamps on assembly	Length	Dixon Part #
1½"	2	25'	M15-25KAF
1½"	2	50'	M15-50KAF
2½"	4	25'	M25-25KAF
2½"	4	50'	M25-50KAF



- Coupled with Female and Male Global Cam and Groove Couplings.
- Preformed clamps, aluminum shank with brass cam arms.

Thread NPSH	Number of Clamps on assembly	Length	Dixon Part #
1½"	2	25'	M15-25GAX
1½"	2	50'	M15-50GAX
2"	2	25'	M20-25GAX
2"	2	50'	M20-50GAX
2½"	4	25'	M25-25GAX
2½"	4	50'	M25-50GAX
3"	4	25'	M30-25GAX
3"	4	50'	M30-50GAX



Consult the factory for pricing and availability for any of the following features:

- Additional lengths
- Other configurations