

Exclusively from REMA TIP TOP/NORTH AMERICA

# REMA GOO



**REMA Goo** is designed to be a high performance temporary conveyor belt repair product that allows you to fix your belt in less than an hour. (Note: repair times are dependent on cure temperatures.)

- Longer Lasting Performance
- Faster On-Site Repairs
- Easier to Apply
- Lower Unit Cost



## Longer Lasting Performance

- **REMA GOO** Flexible Conveyor Belt Repair Material is formulated to last longer.
- **REMA GOO** is a 100% solids polyurethane formulation which meets VOC regulations. It does not post harden and will remain flexible. It also resists shrinking after application and exhibits good UV resistance.
- **REMA GOO**'s flexible formulation reduces the chance of bond failure at edges of repair caused by rounding over conveyor pulleys.
- **REMA GOO** cures to a softer 60 ( $\pm 5$ ) Shore A Durometer which allows the repair to wear at a rate similar to that of the conveyor belt covers.
- **REMA GOO** exhibits excellent adhesions to conveyor belt.

## Faster On-Site Repairs

- The most common types of conveyor belt damage which are cuts, gouges and small holes can be completely repaired with minimal system downtime.
- No hand mixing of material is required. The **REMA GOO** is applied by using the **REMA GUN** Manual Dispenser.

**REMA**

ONE BRAND – ONE SOURCE – ONE SYSTEM

**GOODYEAR**  
GOODYEARBELTING.COM

**Call Toll Free: 1-866-711-4673**  
**International: +1-727-342-5086**

**We Ship**  
**World Wide**

Exclusively from REMA TIP TOP/NORTH AMERICA

# REMA GOO

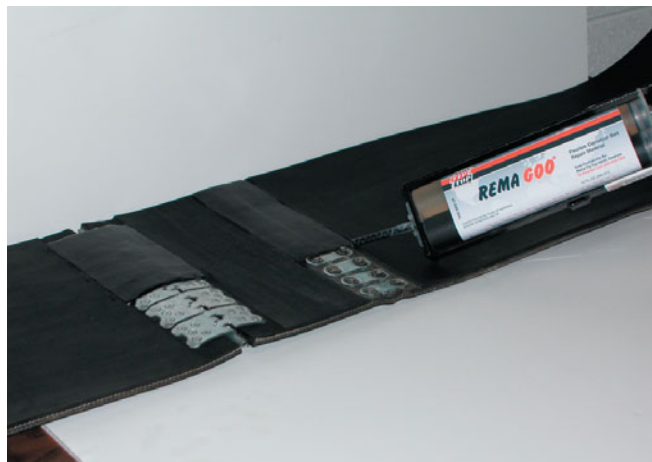


## Easier to Apply

- **REMA GOO** comes is a twin tube cartridge and is dispensed with a heavy duty **REMA GUN**. Once the damaged area has been prepared and cleaned, just remove the cap, slip the **REMA GOO** cartridge into the gun, put on the mixing tip and simply fill the repair.

## Lower Cost

- **REMA GOO** is more material for the money compared to many of the leading repair materials in its class.
- Not only is there “**More GOO for the Buck**”, but there is very little waste. You can use only what you need for your repair and save the rest for your next repair.



**REMA GOO** can also be used over mechanical fasteners with the proper preparation

**REMA TIP TOP/North America Inc**  
**Industrial Division**

1500 Industrial Blvd.  
Madison, GA 30650

Toll Free: 800.334.REMA (7362)  
Phone: 706.752.4000  
Fax: 706.752.4015  
[www.rematiptop.com](http://www.rematiptop.com)

**REMA**

ONE BRAND – ONE SOURCE – ONE SYSTEM

**GOODYEAR**  
GOODYEARBELTING.COM

**Call Toll Free: 1-866-711-4673**  
**International: +1-727-342-5086**

**We Ship**  
**World Wide**

Pulley laggings and belt idler sleeves

# REMAGRIP/REMASLEEVE



Industrie



**REMA**

**GOODYEAR**  
GOODYEARBELTING.COM

Call Toll Free: 1-866-711-4673  
International: +1-727-342-5086

**We Ship  
World Wide**



Industrie

The brand for conveyor maintenance

## REMA TIP TOP INDUSTRIE

**REMA TIP TOP Industrie** has been renowned for high quality for over 50 years. The brand **REMA TIP TOP** represents ground-breaking products for the prevention of wear and corrosion. Additionally, **REMA TIP TOP Industrie** supplies high-quality materials for the protection, repair and maintenance of conveyor belts.

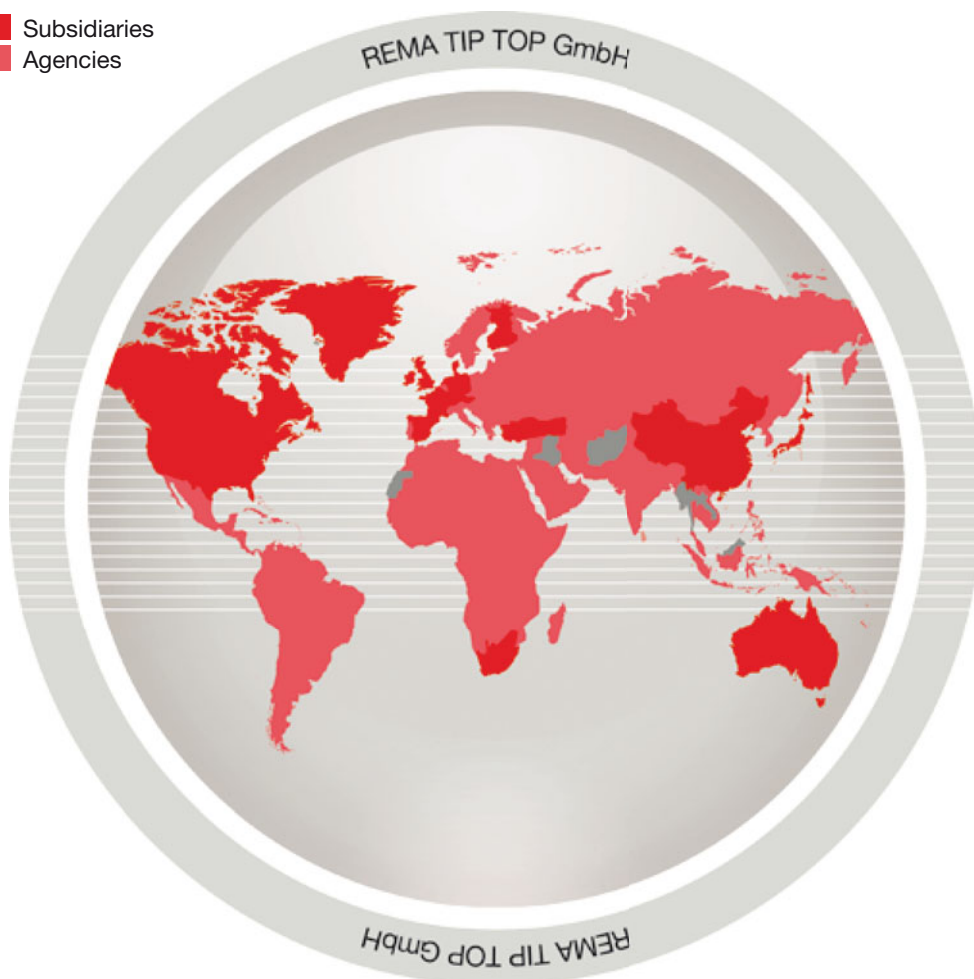
All moving conveyor parts are subject to high wear. This is due to a wide variety of negative

influences which are often increased by corrosion and caking problems. These influences reduce the profitability of the whole plant. They result in undesirable material build-up (due to poor belt tracking), and increased noise levels, which endanger the health of your staff.

**REMA TIP TOP Industrie** develops special rubber lagging and lining products to protect your employees and your equipment.

**REMA TIP TOP** is your competent partner for everything associated with conveyor maintenance – worldwide!

- Subsidiaries
- Agencies



**GOODYEAR**  
GOODYEARBELTING.COM

Call Toll Free: 1-866-711-4673  
International: +1-727-342-5086

**We Ship  
World Wide**

Covers for your conveyor

# REMAGRIP – REMALINE – REMASLEEVE



Industrie

For fabric conveyor belts under light to medium-duty operating conditions	Page 4
REMAGRIP 50 REMAGRIP 60	
For medium to heavy-duty operating conditions	Page 5
REMAGRIP 65 REMAGRIP 70 REMAGRIP 70 SL	
For pulleys subject to high stress	Page 6
REMAGRIP CK-X REMAGRIP CP-X	
Rubber lagging for individual grooving	Page 8
REMALINE 65	
For extremely wet operating conditions	Page 8
REMAGRIP 100	
For the pharmaceutical and food processing industry	Page 9
REMAGRIP 60 WHITE REMAGRIP 200 WHITE	
REMASLEEVE special rubber sleeves for conveyor belt idlers	Page 10
Additional products for pulley lagging	Page 12
REMA TIP TOP bonding systems REMA TIP TOP special tools	
Technical data	Page 13
REMAGRIP pulley lagging application chart Coefficients of friction	
Essential advantages	Page 14
Our product range	Page 15

**REMAGRIP, REMALINE** and **REMASLEEVE** special rubber lagging and lining for pulleys and idlers in conveyors are always state-of-the-art. They are easy to apply and have proven to be highly efficient under every kind of stress and in every climate, worldwide. Their high resistance to wear and corrosion makes it possible to significantly increase the service life of conveyors, and to considerably reduce downtime, loss of tonnage and labour costs.

A further advantage of **REMAGRIP, REMALINE** and **REMASLEEVE** lagging and lining is their CN bonding layer, which provides quick application, high initial tack and unsurpassed adhesion values (rubber to metal) on site and in the workshop.

## Product range – overview

We offer you the right solution, tailored to suit the pulleys of your conveyor in all fields of application. This chart provides a short overview of the **REMAGRIP, REMALINE** and **REMASLEEVE** range of products for driving pulleys, tail pulleys, snub pulleys, tension pulleys and carrying idlers.

Furthermore, our product range offers you optimum solutions to the problems which occur in conveyor systems. The specific properties of the individual products have been tailored to suit your specific requirements.

### Special rubber grades

“V” self-extinguishing  
“S” flame-resistant  
“HR” heat resistant  
“OIL” oil-resistant



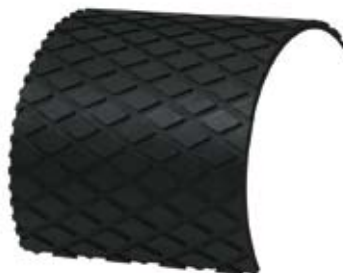
Industrie

For fabric conveyor belts in light to medium-duty operating conditions

## REMAGRIP 50 AND 60



REMAGRIP 50/CN



REMAGRIP 60/CN

Available special rubber grades: V, OIL, S, HR

### Fields of application and product advantages:

- Grooved rubber lagging for drive pulleys
- Avoidance of material build-up with positive influence on belt tracking
- Reduced slippage between belt and pulley through increased coefficient of friction
- Evacuation of moisture and dirt
- Protects pulleys from wear and corrosion
- Pulley lagging for low to medium-tension fabric belts

### Technical data:

Property	Products					
	REMAGRIP 50/CN	REMAGRIP 60/CN	REMAGRIP 60 V/CN	REMAGRIP 60 OIL/CN	REMAGRIP 60 S/CN	REMAGRIP 60 HR/CN
Polymer	NR	BR/IR/SBR	CR	NBR	SBR/BR	IR/BR
Density [g/cm <sup>3</sup> ]	1.08	1.12	1.40	1.20	1.24	1.12
Hardness [Shore A]	50 ± 5	63 ± 5	62 ± 5	65 ± 5	68 ± 5	62 ± 5
Abrasion [mm <sup>3</sup> ]	130	120	130	125	125	60
Resilience [%]	73	47	27	25	40	53
Profile grooves [mm]	18 x 6 x 3	18 x 6 x 3	18 x 6 x 3	18 x 6 x 3	18 x 6 x 3	18 x 6 x 3
Colour	orange	black	black	black	black	black
Flammability	-	-	self-extinguishing <sup>1)</sup>	-	flame resistant <sup>2)</sup>	-
Electric Resistance	-	-	anti-static <sup>1) 3)</sup>	-	anti-static <sup>3)</sup>	-
Approval for underground use	-	-	D (LOBA) <sup>4)</sup> PL (WUG) <sup>5)</sup> USA (MSHA) <sup>6)</sup> RUS (GOST) <sup>7)</sup>	-	-	-
Operating temperature	- 30 °C to + 80 °C	- 30 °C to + 80 °C	- 30 °C to + 80 °C	- 30 °C to + 80 °C	- 30 °C to + 80 °C	- 30 °C – + 90 °C to + 110 °C for a short time

**GOODYEAR**  
GOODYEARBELTING.COM

**Call Toll Free: 1-866-711-4673**  
**International: + 1-727-342-5086**

**We Ship**  
**World Wide**



Industrie

For medium to heavy-duty operating conditions

## REMAGRIP 65 AND 70



### REMAGRIP 65/CN

Available special rubber grades: V

### REMAGRIP 70/CN

Available special rubber grades: V, S, HR

### REMAGRIP 70/CN-SL

(strip lagging)

#### Fields of application and product advantages:

- Grooved rubber lagging for drive pulleys
- Avoidance of material build-up with positive influence on belt tracking
- Reduced slippage between belt and pulley through increased coefficient of friction
- Evacuation of moisture and dirt
- Protects the pulleys from wear and corrosion
- Long belt conveyors (**REMAGRIP 70**)
- Large pulley diameters (**REMAGRIP 70**)
- For high-tension fabric belts and medium to high-tension steel-cord belts (**REMAGRIP 70**)

#### Further advantages REMAGRIP 70/CN-SL (strip lagging):

- Significantly improved evacuation of water through additional horizontal grooves
- Preparation of the strips in the workshop, in the warehouse or on site
- Scrap reduced to a minimum
- Can be trimmed precisely with the **REMA TIP TOP** rubber cutting machine MODEL 32
- Easy application, even to pulleys in situ

#### Technical data:

Property	Products						
	REMAGRIP 65/CN	REMAGRIP 65 V/CN	REMAGRIP 70/CN	REMAGRIP 70 V/CN	REMAGRIP 70 S/CN	REMAGRIP 70 HR/CN	REMAGRIP 70/CN-SL
Polymer	BR/IR/SBR	CR	BR/IR/SBR	CR	SBR/BR	IR/BR	BR/IR/SBR
Density [g/cm <sup>3</sup> ]	1.12	1.42	1.12	1.40	1.24	1.12	1.13
Hardness [Shore A]	63 ± 5	62 ± 5	63 ± 5	62 ± 5	68 ± 5	62 ± 5	60 ± 5
Abrasion [mm <sup>3</sup> ]	120	130	120	130	125	60	120
Resilience [%]	47	27	47	27	40	53	45
Profile grooves [mm]	50 x 6 x 3	50 x 6 x 3	50 x 10 x 8 50 x 8 x 6	50 x 10 x 8 50 x 8 x 6	50 x 10 x 8 50 x 8 x 6	50 x 10 x 8 50 x 8 x 6	50 x 8 x 6
Colour	black	black	black	black	black	black	schwarz
Flammability	–	self-extinguishing <sup>1)</sup>	–	self-extinguishing <sup>1)</sup>	flame resistant <sup>2)</sup>	–	–
Electric Resistance	–	anti-static <sup>1)3)</sup>	–	anti-static <sup>1)3)</sup>	anti-static <sup>1)3)</sup>	–	–
Approval for underground use	–	D (LOBA) <sup>4)</sup> PL (WUG) <sup>5)</sup> USA (MSHA) <sup>6)</sup> RUS (GOST) <sup>7)</sup>	–	D (LOBA) <sup>4)</sup> PL (WUG) <sup>5)</sup> USA (MSHA) <sup>6)</sup> RUS (GOST) <sup>7)</sup>	–	–	–
Operating temperature	- 30 °C to + 80 °C	- 30 °C to + 80 °C	- 30 °C to + 80 °C	- 30 °C to + 80 °C	- 30 °C to + 80 °C	- 30 °C – + 90 °C to + 110 °C for a short time	- 30 °C to + 80 °C

**GOODYEAR**  
GOODYEARBELTING.COM

**Call Toll Free: 1-866-711-4673**  
**International: + 1-727-342-5086**

**We Ship  
World Wide**



For pulleys subject to high stress

## REMAGRIP C

Ceramic material is suitable for pulley lagging, thanks chiefly to its specific properties of extremely high wear resistance provided by aluminium oxide ( $Al_2O_3$ ). It replaces traditional materials, because it provides higher profitability by considerably increasing the service life and the efficiency of pulley laggings.

### REMAGRIP CK-X – for constant grip

#### Description:

The “knobby” surface of the ceramic tiles provides optimum grip on pulleys subject to high stress.

### Characteristics and advantages of REMAGRIP CK-X and CP-X:

- Provides significantly higher traction than traditional rubber laggings
- High reliability even in wet, clayey and muddy operating conditions
- High resistance to wear (service life up to 10 times longer than that of traditional rubber laggings)
- Dynamic resistance optimised by arrangement of ceramic tiles based on FEM calculations
- Unique three-dimensional embedding of the ceramic tiles in the rubber substrate
- High self-cleaning effect due to grooves between the rows of ceramic tiles
- More flexible than traditional rubber/ceramic pulley lagging, therefore even small diameter pulleys can be lagged easily
- Protection of the belt through elastic rubber base (optimum adaptation of the ceramic tiles to the conveyor belt surface)
- Durable adhesion if bonded with the outstanding **REMA TIP TOP** bonding systems

### REMAGRIP CP-X – the benchmark for wear resistance

#### Description:

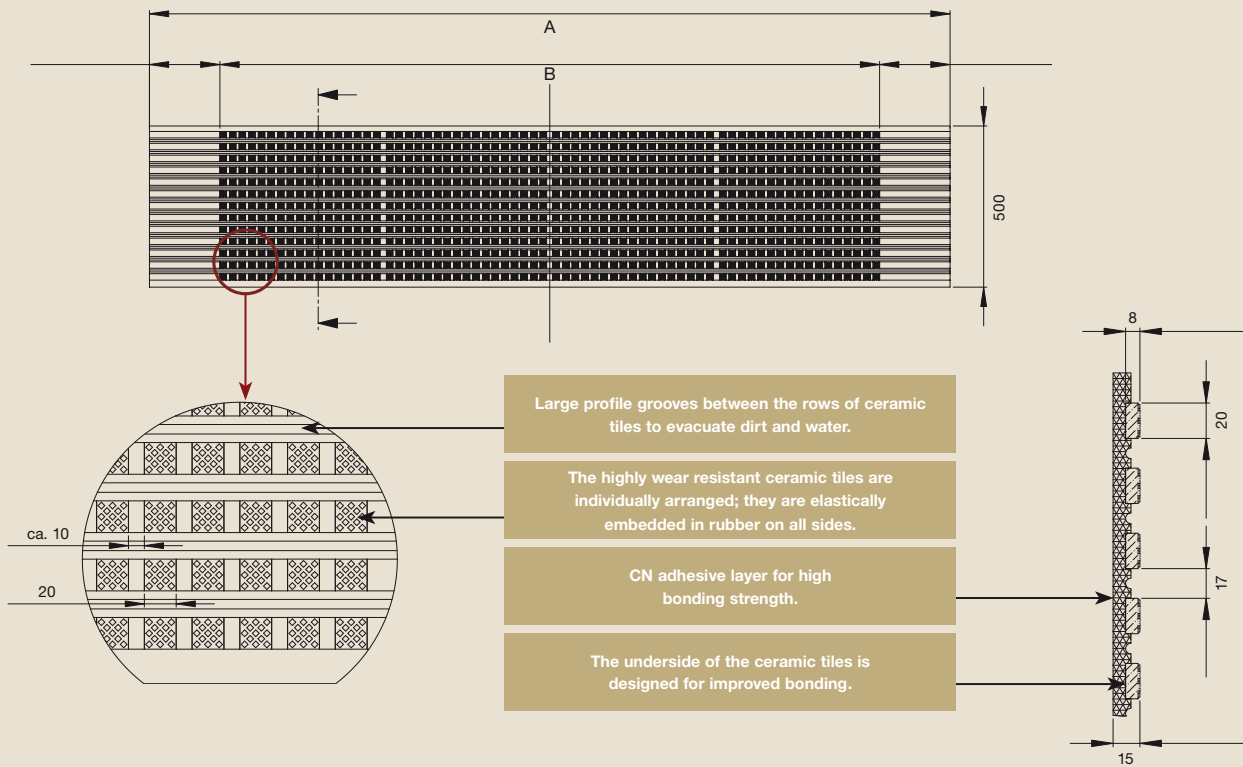
The plain surface of the ceramic tiles is highly efficient, particularly on non-drive pulleys (ranging from tail pulleys to snub pulleys) which are subject to high wear.





Industrie

# REMAGRIP C



Item name	for belt width [mm]	A total width [mm]	B width ceramics [mm]
CK-X (ceramic tiles with knobs – for drive pulleys)			
REMAGRIP CK-X 40/800	800	1 250	840
REMAGRIP CK-X 40/900 FS	900	1 250	920
REMAGRIP CK-X 45/1 000	1 000	1 500	1 100
REMAGRIP CK-X 50/1 200	1 200	1 600	1 200
REMAGRIP CK-X 50/1 400 FS	1 400	1 600	1 450
REMAGRIP CK-X 60/1 500	1 500	1 900	1 610
REMAGRIP CK-X 70/1 600	1 600	2 100	1 720
REMAGRIP CK-X 75/1 800	1 800	2 300	1 880
REMAGRIP CK-X 70/2 000 FS	2 000	2 100	2 060
REMAGRIP CK-X 90/2 000	2 000	2 500	2 060
REMAGRIP CK-X 90/2 400 FS	2 400	2 500	2 420
REMAGRIP CK-X 110/2 400	2 400	2 880	2 420
CK-X V („V“ quality: rubber in self-extinguishing quality, limited oil- and grease-resistant)			
REMAGRIP CK-X 50/1 200 V	1 200	1 600	1 200
REMAGRIP CK-X 70/1 600 V	1 600	2 100	1 720
REMAGRIP CK-X 90/2 000 V	2 000	2 500	2 060
CP-X (ceramic tiles plain – for tail pulleys)			
REMAGRIP CP-X 40/800	800	1 250	840
REMAGRIP CP-X 45/1 000	1 000	1 500	1 100
REMAGRIP CP-X 50/1 200	1 200	1 600	1 200
REMAGRIP CP-X 60/1 500	1 500	1 900	1 610
REMAGRIP CP-X 70/1 600	1 600	2 100	1 720
REMAGRIP CP-X 75/1 800	1 800	2 300	1 880

**GOODYEAR**  
GOODYEARBELTING.COM

**Call Toll Free: 1-866-711-4673**  
**International: +1-727-342-5086**

**We Ship**  
**World Wide**



Industrie

Rubber lagging for individual grooving

## REMALINE 65



REMALINE 65/CN

For extremely wet operating conditions

## REMAGRIP 100



REMAGRIP 100/CN

### Fields of application and product advantages:

- Plain pulley lagging to be regrooved with RUBBER CUT
- Individual profile design (e.g. herring bone profile, waffle profile)
- Avoidance of material build-up with positive influence on belt tracking
- Reduces slippage between belt and pulley through increased coefficient of friction
- Protects the pulleys from wear and corrosion
- Specifically designed for conveyor belts with fabric plies

### Fields of application and product advantages:

- Lagging of driving pulleys for light fabric belts (up to EP 630)
- Difficult operating conditions (extremely wet operating conditions, ice, clay or other smeary materials)
- High resistance to wear
- Excellent self-cleaning properties
- Improved belt tracking
- HD lagging also for medium-duty fabric belts (up to EP 1 250)

### Technical data:

Property	Products		
	REMALINE 65/CN	REMAGRIP 100/CN	REMAGRIP 100 HD/CN
Polymer	BR/IR/SBR	BR/IR	BR/IR
Density [g/cm <sup>3</sup> ]	1.12	1.10	1.40
Hardness [Shore A]	63 ± 5	64 ± 5	62 ± 5
Abrasion [mm <sup>3</sup> ]	120	50	50
Resilience [%]	47	51	51
Profile grooves [mm]	–	knobs round (6 mm)	knobs oval (7 mm)
Colour	black	black	black
Operating temperature	- 30 °C to + 80 °C	- 30 °C to + 80 °C	- 30 °C to + 80 °C

For the pharmaceutical and foodprocessing industry



Industrie

## REMAGRIP 60 - 200 WHITE



REMAGRIP 60 WHITE FOOD/CN

REMAGRIP 60 WHITE OIL FOOD/CN

REMAGRIP 200 WHITE OIL FOOD/CN

### Fields of application and product advantages:

- Pulley lagging for rubber and PVC/PUR conveyor belts
- Evacuation of moisture and dirt
- Reduced slippage between belt and pulley, increased coefficient of friction
- Avoidance of material build-up with positive influence on belt tracking
- Protects the pulleys from wear and corrosion
- Easy cleaning thanks to wide grooves (**REMAGRIP 200**)
- Highly effective evacuation of dirt and water thanks to transverse grooves (**REMAGRIP 200**)

### Technical data:

Property	Products		
	REMAGRIP 60 WHITE FOOD/CN	REMAGRIP 60 WHITE OIL FOOD/CN	REMAGRIP 200 WHITE OIL FOOD/CN
Polymer	NR/BR	NBR	NBR
Density [g/cm <sup>3</sup> ]	1.19	1.23	1.23
Hardness [Shore A]	60 ± 5	56 ± 5	56 ± 5
Abrasion [mm <sup>3</sup> ]	160	160	160
Resilience [%]	57	30	30
Profile grooves [mm]	18 x 6 x 3	18 x 6 x 3	8 x 4
Colour	white	white	white
Food contact	Admissible in accordance with US FDA regulation 21 CFR 177.2600 Admissible in accordance with the German BgVV regulation, category 3+4, 167. notice, paragraph XXI		



Industrie

## REMASLEEVE special rubber sleeves for conveyor belt idlers

# REMASLEEVE VSB AND KSB

**REMASLEEVE VSB = wear and caking protection sleeve (7mm)**

**REMASLEEVE KSB = corrosion protection sleeve (4mm)**

### Product advantages:

- Quick and easy mounting through pneumatic device
- Seamless
- Protects idler bearings and conveyor belts
- Extends service life of this equipment
- Reduces belt slippage
- Reduces the noise level
- CN bonding layer for durable adhesion, if bonded with **REMA TIP TOP** bonding systems

### Fields of application:

- For carrying idlers and return idlers
- Protection of idlers against:
  - Caking
  - Ice build-up
  - Wear
  - Corrosion
  - Impact
- For all common diameters of idlers according to the DIN standard.



### Mounting set for REMASLEEVE VSB and KSB idler sleeves

For quick and easy pneumatic mounting of the sleeves.



### Mounting set VSB/KSB Content:

- 1 Mounting adapter for each diameter (Idler-Ø 50/63,5/80/89/108/133/150 mm)
- 1 fastening strap
- 1 pedal operated air injection device with flexible hose

**GOODYEAR**  
GOODYEARBELTING.COM

**Call Toll Free: 1-866-711-4673**  
**International: +1-727-342-5086**

**We Ship**  
**World Wide**

REMASLEEVE special rubber sleeves for conveyor belt idlers

## REMASLEEVE VSB AND KSB



Industrie

Property	Products				
	REMASLEEVE VSB-RE 25/CN	REMASLEEVE VSB-RE 25 ORANGE/CN	REMASLEEVE VSB-E 40/CN	REMASLEEVE VSB-RE 40 WEISS FOOD/CN	REMASLEEVE VSB-RE 70/CN
Polymer	NR	NR	NR/BR	NR/BR	NR/BR
Density [g/cm <sup>3</sup> ]	0.98	0.98	1.03	1.02	1.10
Hardness [Shore A]	33 ± 5	30 ± 5	40 ± 5	40 ± 5	64 ± 5
Abrasion [mm <sup>3</sup> ]	95 (5N)	90 (5N)	150	100 (5N)	50
Resilience [%]	75	70	60	80	51
Colour	black	orange	black	white	black
Thickness [mm]	(3), 7, 10, 20	7	7	7	7
Length [mm]	800/1 000/1 300	800/1 000/1 300	800/1 000 1 300/2 750	800/1 000/1 300	1 000/1 300/1 500
Idler diameter [mm]	50/63,5/80 89/108/133/150	63,5/80/89 108/133/150	63,5/80/89 108/133/150	50/63,5/80/89 108/133/150	108/133
Idler diameter [Inches]	2/3/4/5	2/3/4/5	2/3/4/5	2	-
Food contact				Admissible in accordance with US FDA regulation 21 CFR 177.2600. Admissible in accordance with the German BgVV regulation, category 4, 167. notice, paragraph XXI	

Property	Products			
	REMASLEEVE KSB-E 60/CN	REMASLEEVE KSB-RE 70 OIL/CN	REMASLEEVE KSB-RE 70 WHITE/CN	REMASLEEVE KSB-RE 70 WHITE OIL FOOD/CN
Polymer	NR/SBR/BR	NBR	NR/BR	NBR
Density [g/cm <sup>3</sup> ]	1.14	1.20	1.19	1.23
Hardness [Shore A]	60 ± 5	65 ± 5	63 ± 5	57 ± 5
Abrasion [mm <sup>3</sup> ]	100	125	160	160
Resilience [%]	43	25	55	30
Colour	black	black	white	white
Thickness [mm]	4	4	4	4
Length [mm]	800/1 000/1 300/2 750	800/1 000/1 300	800/1 300	1 000/1 300
Idler diameter [mm]	50/63,5/80 89/108/133/150	50/63,5/80 89/108/133	80/89	108/133
Idler diameter [Inches]	-	-	-	-
Food contact			Admissible in accordance with US FDA regulation 21 CFR 177.2600. Admissible in accordance with the German BgVV regulation, category 4, 167. notice, paragraph XXI	

**GOODYEAR**  
GOODYEARBELTING.COM

**Call Toll Free: 1-866-711-4673**  
**International: +1-727-342-5086**

**We Ship  
World Wide**



Industrie

## Additional products for pulley lagging **BONDING SYSTEMS AND SPECIAL TOOLS**

### REMA TIP TOP Bonding Systems

The pulley and idler lagging featuring a CN bonding layer can be easily and permanently applied to the prepared steel-surface of pulleys and idlers with the excellent **REMA TIP TIP** bonding systems. This perfectly concerted system, consisting of cleaning fluid, primer, cement, hardener and a CN-layer has achieved outstanding results worldwide and in different climates. The rubber-metal bonding and bonding-joints, feature outstanding static and dynamic stability and are processed by technicians, trained at **REMA TIP TOP**.



Cement SC 4000 (CFC-free) - with hardener E 40  
Cement SC 2000 (nonflammable) - with hardener UT-R20  
These adhesives are available in three versions/colours: standard (green), conductive for ATEX installations, underground equipment (black) and for the adhesion of white rubber lining, e.g. in the food industry (white). Final strength after 24 hours.

Cement BC 3004 (CFC-free) - with hardener E 40  
Cement BC 3000 (nonflammable) - with hardener UT-R20  
These adhesives feature a long open tack time, therefore they are especially suitable for very large area bonding. Colour: blue. Final strength after 7 days.

**REMA TIP TOP** metal primers are used to precondition metal surfaces prior to rubber-metal bonding with **REMA TIP TOP** bonding systems. The concerted primers and adhesives ensure a high-strength bonding system, providing optimum bonding strength and highest surface protection.

- Good corrosion protection against atmospherical influences like ozone and moisture
- Outstanding rubber-metal bonding

Primer PR 200 (gray) and PR 304 (red), (both CFC-free)  
Primer PR 300 (red) (nonflammable)

### Properties:

- Durable and reliable bond
- Excellent tack properties
- Very high separating strength
- Extraordinary dynamic stability
- Good temperature resistance
- Approval for underground use in mines (nonflammable adhesives)



### REMA TIP TOP special tools

The entire program of special tools - from professionals for professionals - offers proven tools and devices for the lagging of pulleys and idlers:

- Rubber mallet
- Stitcher with ball bearing
- Rubber cutting knife
- Offset knife
- Hand stripper JUNIO HS (for removing rubber lagging from plane metal-surfaces)
- Rubber cutting machine MODEL 32 (maximum rubber thickness 50 mm)
- Angle grinder LK 604 "FLEX" for professional rubber buffing
- RUBBER CUT 400 Profile Groover

**GOODYEAR**  
GOODYEARBELTING.COM

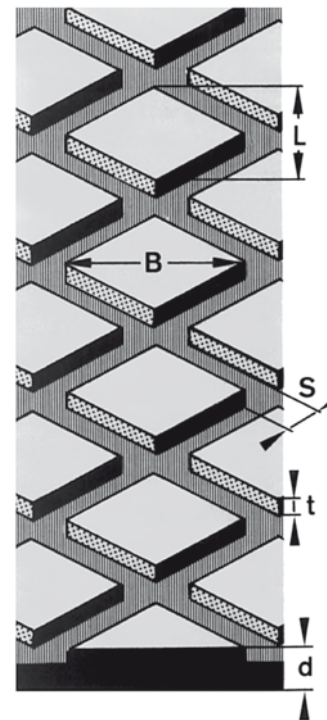
**Call Toll Free: 1-866-711-4673**  
**International: + 1-727-342-5086**

**We Ship**  
**World Wide**

# APPLICATION CHART AND COEFFICIENTS OF FRICTION

## REMAGRIP Pulley Lagging Application Chart:

Property	REMAGRIP									
	CK-X	200 WHITE OIL- FOOD/CN	100 HD/CN	100 /CN	70/CN- SL	70/CN 10 x 8	70/CN 8 x 6	65/CN	60/CN	50 ORANGE /CN
<b>Dimensions [mm]</b>										
diamond diagonal, axial direction (B)	20	-	-	-	86	86	86	86	35	35
diamond diagonal, radial direction (L)	20	-	-	-	50	50	50	50	18	18
Groove width (S)	17	8	-	-	10	10	8	6	6	6
Groove depth (t)	8	4	-	-	8	8	6	3	3	3
<b>Thickness of lagging (d) [mm]</b>										
High-tension steelcord belts	15	-	-	-	15 - 18	15 - 20	15 - 20	-	-	-
Medium-tension steelcord belts	15	-	-	-	12 - 15	15	12 - 15	12	-	-
High-tension fabric belts	15	-	-	-	10 - 15	15	10 - 12	10 - 12	12 - 15	12
Medium-tension fabric belts	15	-	18	-	-	-	-	8 - 10	8 - 12	10
Low-tension fabric belts	15	8	-	12	-	-	-	8	8	8
Pulley diameter up to 500	15	8	-	12	-	-	-	8	8	8
Pulley diameter 500 - 800	15	8	-	12	10	-	-	10	10	10
Pulley diameter 800 - 1 200	15	-	18	12	12	12	12	12	12	12
Pulley diameter above 1 200	15	-	18	12	15 - 18	15 - 20	15 - 20	12	15	12



## Coefficients of friction (Pulley - Belt):

Operating conditions	Coefficients of friction		
	Steel	REMAGRIP Rubber lagging	REMAGRIP C Ceramic lagging
Dry	0.35 to 0.40	0.40 to 0.45	0.75 to 0.85
Wet	0.10 to 0.15	0.33 to 0.38	0.50 to 0.80
Wet and muddy	0.05 to 0.10	0.22 to 0.30	0.45 to 0.55

Coefficient of friction according to the DIN 22101 standard. Friction body: Belt cover in standard quality.



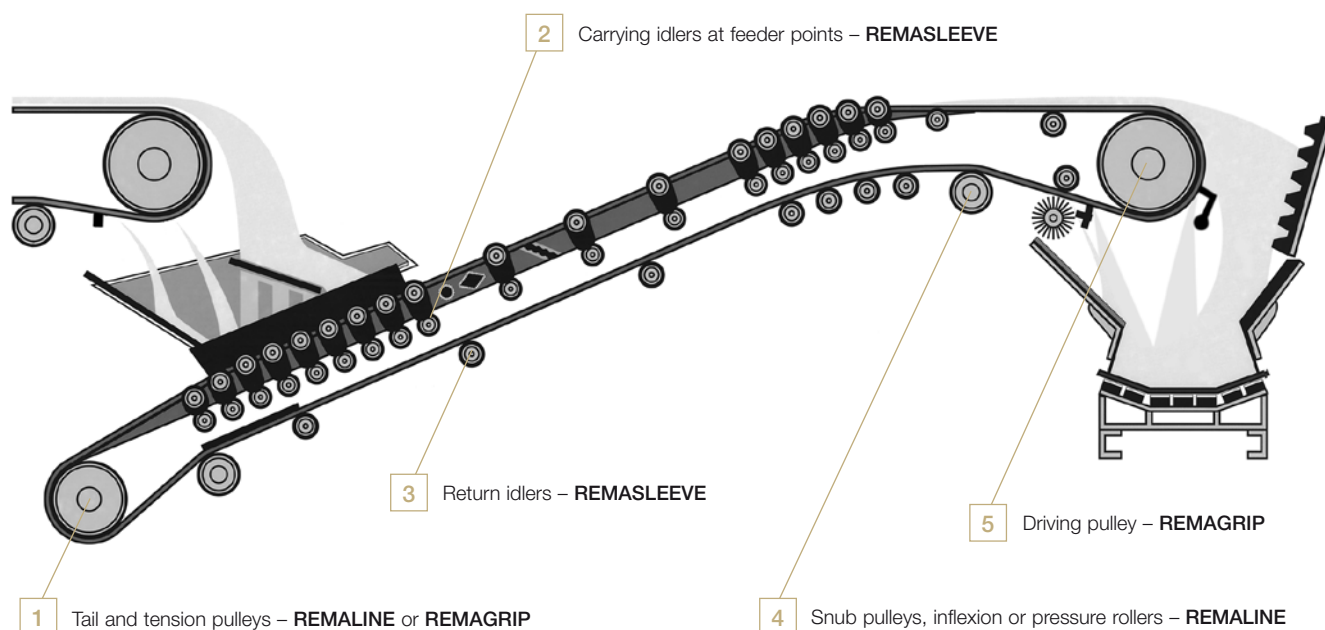
Industrie

## Essential advantages **REMA TIP TOP**

**REMAGRIP, REMALINE and REMASLEEVE special rubber lining and lagging are distinguished by numerous advantages:**

- Complete solutions through quick and easy bonding with **REMA TIP TOP** bonding systems, which have proved to be effective all over the world.
- The general operating performance of the conveyor is improved considerably. The belt is protected. Thus the service life of the whole plant is increased.
- The pulleys and idlers run evenly without material build-up, thus ensuring even belt tracking.
- The belt is protected because slippage between the belt and the pulleys / idlers is reduced.
- Reduced elongation of the belt thanks to lower required belt tension.
- Reduced noise and vibrations in conveyor systems.

**REMA TIP TOP** special lagging for all pulleys and idlers in your conveyor system



### Our range of services:

#### Know-how

Our knowledge is based on many years of cooperation with leading companies in various lines of business. The outcome of this cooperation is:

- Our expertise in all aspects of the complex area of pulley lagging
- Our problem solving solutions which are produced by specialists and are implemented consistently
- Our worldwide experience and references

#### Service

Correct assembly carried out by our specialized staff ensures the successful application.

#### Maintenance

For inspection and servicing work, qualified technical staff is always available to assist you.

#### Consulting

Our specialists find the optimum solution for your plant and your company. This includes:

- Analysis of problems
- Suggestions for carrying out pulley lagging, on site or in our workshops
- Analysis of the performance of pulley laggings

#### Product quality

You can rely on **REMA TIP TOP** products. High-quality material and excellent manufacturing at certified production plants ensure optimum product properties.

**REMA TIP TOP** is always there for you, wherever you are: with our customer service in almost every country in the world.

**GOODYEAR**  
GOODYEARBELTING.COM

**Call Toll Free: 1-866-711-4673**  
**International: + 1-727-342-5086**

**We Ship**  
**World Wide**



Our product range

# REMA TIP TOP INDUSTRIE- OUR PRODUCT RANGE

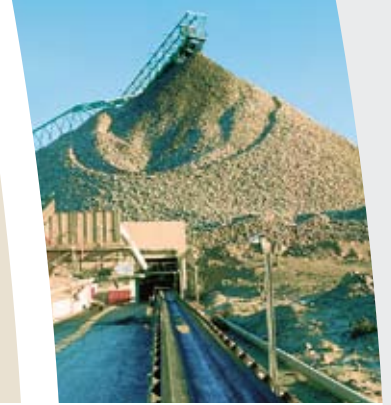


Industrie

Our specialists are also available for consultation in the following areas:

## Conveyor maintenance:

- Rubber and ceramic-rubber laggings for pulleys
- Rubber lining for rollers (return idlers, etc.)
- Impact damping equipment
- Lateral guiding systems
- Belt cleaning systems
- Connection and repair systems
- Cleats and corrugated edges
- Dust sealing systems



## Wear protection:

- Rubber liners
- Polyurethane liners
- Non-stick liners
- Ceramic liners
- Tube liners
- Components made of special rubber
- Liners for mills
- Rubber and polyurethane screen linings



## Corrosion protection:

- Vulcanised and non-vulcanised soft rubber lining materials
- Hard rubber liners
- PU coating systems
- Polyurea coatings
- Flake coating systems



## Bonding systems and solutions

Specialist tools and accessories



**GOODYEAR**  
GOODYEARBELTING.COM

**Call Toll Free: 1-866-711-4673**  
**International: + 1-727-342-5086**

**We Ship  
World Wide**

Your local contact:

582 0961 - IV.07 Printed in Germany

**REMA TIP TOP/North America Inc  
Industrial Division**

1500 Industrial Blvd.  
Madison, GA 30650

Toll Free: 800.334.REMA (7362)

Phone: 706.752.4000

Fax: 706.752.4015

[www.rematiptop.com](http://www.rematiptop.com)

**REMA**

**GOODYEAR**  
GOODYEARBELTING.COM

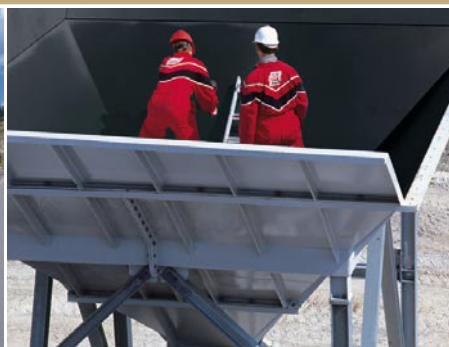
**Call Toll Free: 1-866-711-4673  
International: + 1-727-342-5086**

**We Ship  
World Wide**

# REMA TIP TOP BONDING SYSTEMS



Industrie



**REMA**

**GOODYEAR**  
GOODYEARBELTING.COM

Call Toll Free: 1-866-711-4673  
International: +1-727-342-5086

**We Ship  
World Wide**



Industrie

ONE BRAND – ONE SOURCE – ONE SYSTEM

## REMA TIP TOP INDUSTRIE



### Rely on REMA TIP TOP – The Premium Brand

Whether you are splicing conveyor belts, re-pairing belts or bonding rubber lining materials, you can always rely on **REMA TIP TOP**. The recognized leader in versatile, high quality cold vulcanizing cements **REMA TIP TOP** has led the way with long-lasting and environmentally-sound adhesives, products that deliver the best adhesion strength in the industry.

**REMA TIP TOP** also manufactures the industry's most comprehensive range of rubber lining materials, pulley lagging, skirting rubber, cleats, scraper rubber, belt cleaning systems and conveyor belt splicing and repair products. See your **REMA TIP TOP** representative for details.

For more information click  
[www.rema-tiptop.com/portal/  
worldwide-distribution.html](http://www.rema-tiptop.com/portal/worldwide-distribution.html)

**GOODYEAR**  
GOODYEARBELTING.COM

**Call Toll Free: 1-866-711-4673**  
**International: + 1-727-342-5086**

**We Ship  
World Wide**

The right product for each application

## OUR QUALITY



Industrie

Field of application	Series	Adhesive / Hardener	Metal Primer
Wear Protection, Conveyor Belt Splicing and Repair, Pulley Lagging	SC-Series	SC 2000 UT-R 20 (nonflammable)	PR 200 (PR 300)
		SC 4000 E-40 (CFC-free)	PR 200 (PR 304)
Corrosion Protection	BC-Series	BC 3000 UT-R 20 (nonflammable)	PR 300 (PR 200)
		BC 3004 E-40 (CFC-free)	PR 304 (PR 200)
Splicing and Repair of PVC Conveyor Belts, Bonding of PVC and PU materials	PC-Series	Plastic Cement UT-R 20 (nonflammable)	–
		Plastic Cement PC-4 E-40 (CFC-free)	–

Our quality control system guarantees competitive benefits thanks to groundbreaking product developments and carefully controlled raw materials exclusively from certified suppliers in order to meet stringent requirements at every stage of production.

**REMA TIP TOP** was one of the first companies in the sector to be awarded DIN ISO certification in the world. Our DIN EN ISO 9001: 2000 accreditation is evidence of our consistently high quality standards.

#### Future-proof performance

Constant expansion of our global network of expertise, high levels of investment into research and development and tapping into new sectors of the conveying and processing market are just some of the means by which we are constantly

improving our position on the international markets. These are the optimum conditions which enable us to meet the needs and requirements of our customers at the highest level, both now and in the future.

#### Worldwide REMA TIP TOP expertise and quality sets the standard.

- High quality and reliability of our Bonding Systems
- State-of-the-art wear and corrosion protection rubber lining systems
- Reliable conveyor belt splicing and repair materials
- Safe and easy-to-use products
- Bonding Systems for a broad range of applications
- Bonds that last

**GOODYEAR**  
GOODYEARBELTING.COM

**Call Toll Free: 1-866-711-4673**  
**International: + 1-727-342-5086**

**We Ship  
World Wide**



Industrie

# REMABOND CEMENT SC SERIES

### Fields of application:

The Bonding Systems of the **CEMENT SC Series** are applicable for durable rubber-rubber, rubber-fabric, rubber-metal and fabric-fabric bonds in the fields of wear and corrosion protection as well as in conveyor belt technology.



In general, the **SC Series** provides **excellent initial and final bonding strength**. Optimum adhesion will be achieved when bonding **REMA TIP TOP products with CN bonding layer**. The adhesives have a user-friendly long open time and are easy-to-process even at low temperatures. The especially developed bonding system of the SC Series convinces with its **superior dynamic load capacity**. To achieve optimum results we recommend the use of appropriate **REMA TIP TOP primers and cleaning fluids**. The bonding systems are supplied with detailed application instructions enclosed.



### CEMENT SC 4000

- Free of CFC and aromatics
- Excellent contact adhesion
- Available in three colors (green, black and white)
- Long shelf life (2 years if stored according to DIN 7716)
- Processed with Hardener E 40

### CEMENT SC 2000

- Nonflammable
- Excellent contact adhesion
- Available in three colors (green, black and white)
- Long shelf life (4 years if stored according to DIN 7716)
- Processed with Hardener UT-R 20



**GOODYEAR**  
GOODYEARBELTING.COM

Call Toll Free: 1-866-711-4673  
International: + 1-727-342-5086

**We Ship  
World Wide**

# REMABOND

## CEMENT BC SERIES



### Fields of application:

The Bonding Systems of the **CEMENT BC Series** are applicable for large-area, rubber-metal and rubber-concrete bonds in the fields of wear and corrosion protection, e.g. tank lining, lagging of large pulleys as well as on-site applications.

The **BC Series** offers a **long open time**. The BC Series combines **superior final adhesion strength** with a long time span before joining (open time), which enables you to bond large surface areas without the risk of over drying. Optimum adhesion is achieved when bonding the **REMA TIP TOP** products with **CN-Bonding layer**. The low viscosity ensures a quick and economic processing of the bonding systems.



### CEMENT BC 3004

- Free of CFC and aromatics
- Long contact life (open time)
- Color: blue
- Long shelf life  
(2 years if stored according to DIN 7716)
- Processed with Hardener E 40

### CEMENT BC 3000

- Nonflammable
- Long contact life (open time)
- Color: blue
- Long shelf life  
(4 years if stored according to DIN 7716)
- Processed with Hardener UT-R 20

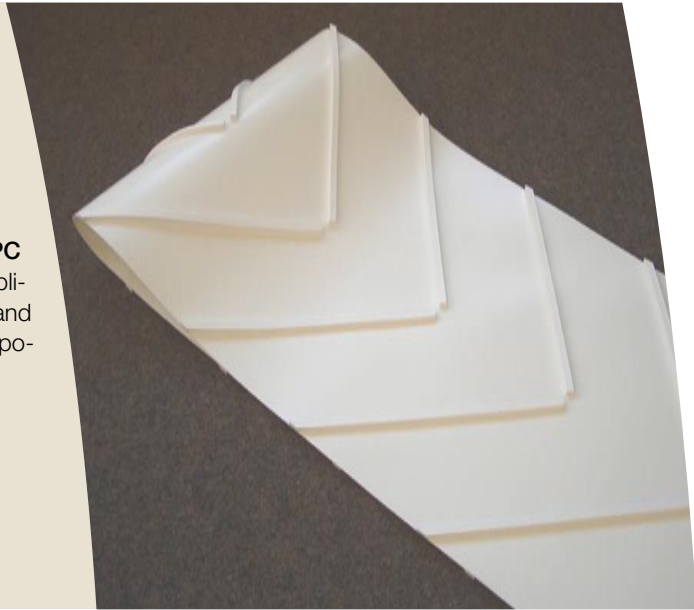


REMABOND

## CEMENT PC SERIES

### Fields of application:

The Bonding Systems of the **PLASTIC CEMENT PC Series** are especially developed for the durable splicing of PVC conveyor belts as well as for the repair and bonding of foils and sheets made of soft PVC and polyurethane.



The **REMA TIP TOP PC Series** offers superior adhesion for bondings and splices exposed to high dynamic load. The two-component bonding system provides a user-friendly open time with high initial and final adhesion strength. It was especially developed for the bonding of PVC and polyurethane materials.



### CEMENT PC 4

- Free of CFC and aromatics
- Good initial and final adhesion strength
- Color: transparent
- Long shelf life  
(2 years if stored according to DIN 7716)
- Processed with Hardener E 40

### CEMENT PC

- Nonflammable
- Good initial and final adhesion strength
- Color: transparent
- Long shelf life  
(4 years if stored according to DIN 7716)
- Processed with Hardener UT-R 20



**GOODYEAR**  
GOODYEARBELTING.COM

Call Toll Free: 1-866-711-4673  
International: +1-727-342-5086

**We Ship  
World Wide**





Industrie

# PRIMERS

## **REMA TIP TOP Metal Primers: The bonding agent for rubber-metal bondings with high requirements regarding static and dynamic loadability**

These one-component, quick drying metal primers can be used on a wide range of metal surfaces. They provide a high initial adhesion strength and help assure a complete and long-lasting bond between rubber and metal.

### **Metal Primer PR 200**

- CFC-free
- Excellent adhesion in combination with SC 2000, BC 3000 or SC 4000
- Short drying time

### **Metal Primer PR 300**

- Good resistance against atmospherical influences such as humidity
- Temporary corrosion protection for metal surfaces after pre-treatment and prior to rubber lining
- Excellent adhesion in combination with SC 2000 or BC 3000
- Nonflammable

### **Metal Primer PR 304**

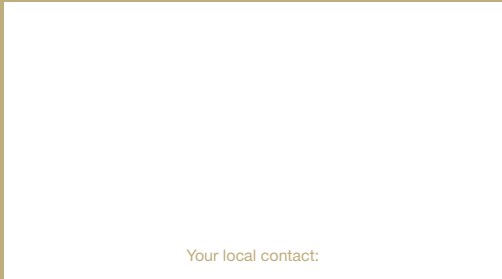
- Free of CFC and aromatics
- Excellent adhesion in combination with BC 3004 or SC 4000
- Good resistance against atmospherical influences such as humidity
- Temporary corrosion protection for metal surfaces after pre-treatment and prior to rubber lining



**GOODYEAR**  
GOODYEARBELTING.COM

**Call Toll Free: 1-866-711-4673**  
**International: +1-727-342-5086**

**We Ship**  
**World Wide**



Your local contact:

582 0231 - V.09 Printed in Germany

**REMA TIP TOP/North America Inc  
Industrial Division**

1500 Industrial Blvd.  
Madison, GA 30650

Toll Free: 800.334.REMA (7362)

Phone: 706.752.4000

Fax: 706.752.4015

[www.rematiptop.com](http://www.rematiptop.com)



500010E



**Call Toll Free: 1-866-711-4673  
International: + 1-727-342-5086**

