

The Right Connection®

NEW

Sanitary Positive Displacement Pumps

June 2014

dixonvalve.com • Customer Service: 800.789.1716



Dixon / JEC Positive Displacement Pumps

The **Cleanest of Clean**; pumps are 100% CIPable. Small compact lightweight design equals less pump more performance. Gently handle low to high viscosity fluids.

Applications

Food Processing:

- Sauces, salad dressing, soups, oils, meats, dough, chocolate, candy, etc.

Dairy:

- Milk, cheese, ice cream, yogurt, butter, etc.

Beverage:

- Juice, water, liquor, specialty drinks, etc.

Pharmaceutical:

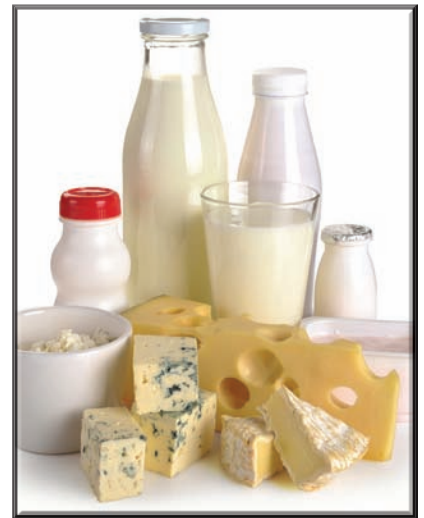
- Aseptic, metering, R & D, sterile environments, etc.

Personal Care:

- Moisturizer, cosmetics, toothpaste, shampoo, etc.

Industrial:

- Paint, resin, ink, chemicals, detergents, etc.



Dixon Sanitary

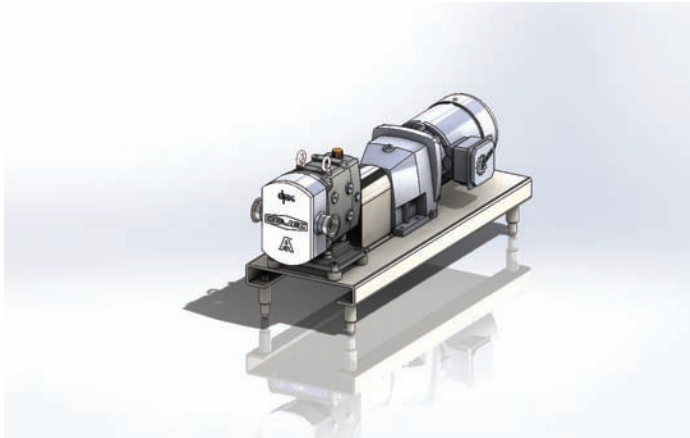
Service

Solutions

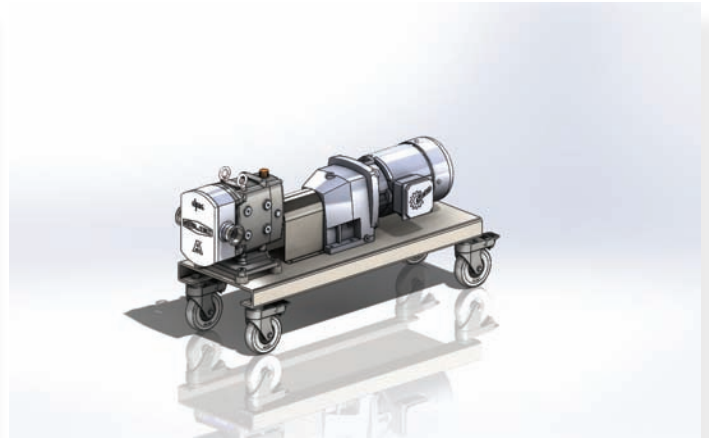
Selection

In-House and On-Site Application Engineering Services

- we can help you select the best pump for your application
- quick turnaround on all quotes
- many options available for specific needs



Complete PD Assembly



Complete PD Assembly with Casters

Stock

- large inventory of pumps and parts
- all stock items can ship within 24 hours
- most assemblies ship within 2 weeks



*Take advantage of all these services by calling
Dixon Sanitary's Engineering Department*

RZL - Series Rot

Pumps can be fitted with a variety of features and options to ensure



Universal Mounting

Pumps can be mounted with top/bottom shaft drive, vertical/horizontal inlet/outlet.

Stainless Steel Gear Box

Standard stainless steel gear box with single oil reservoir made from precision casting offers paint free and rust free long lasting durability.

Helical Timing Gears

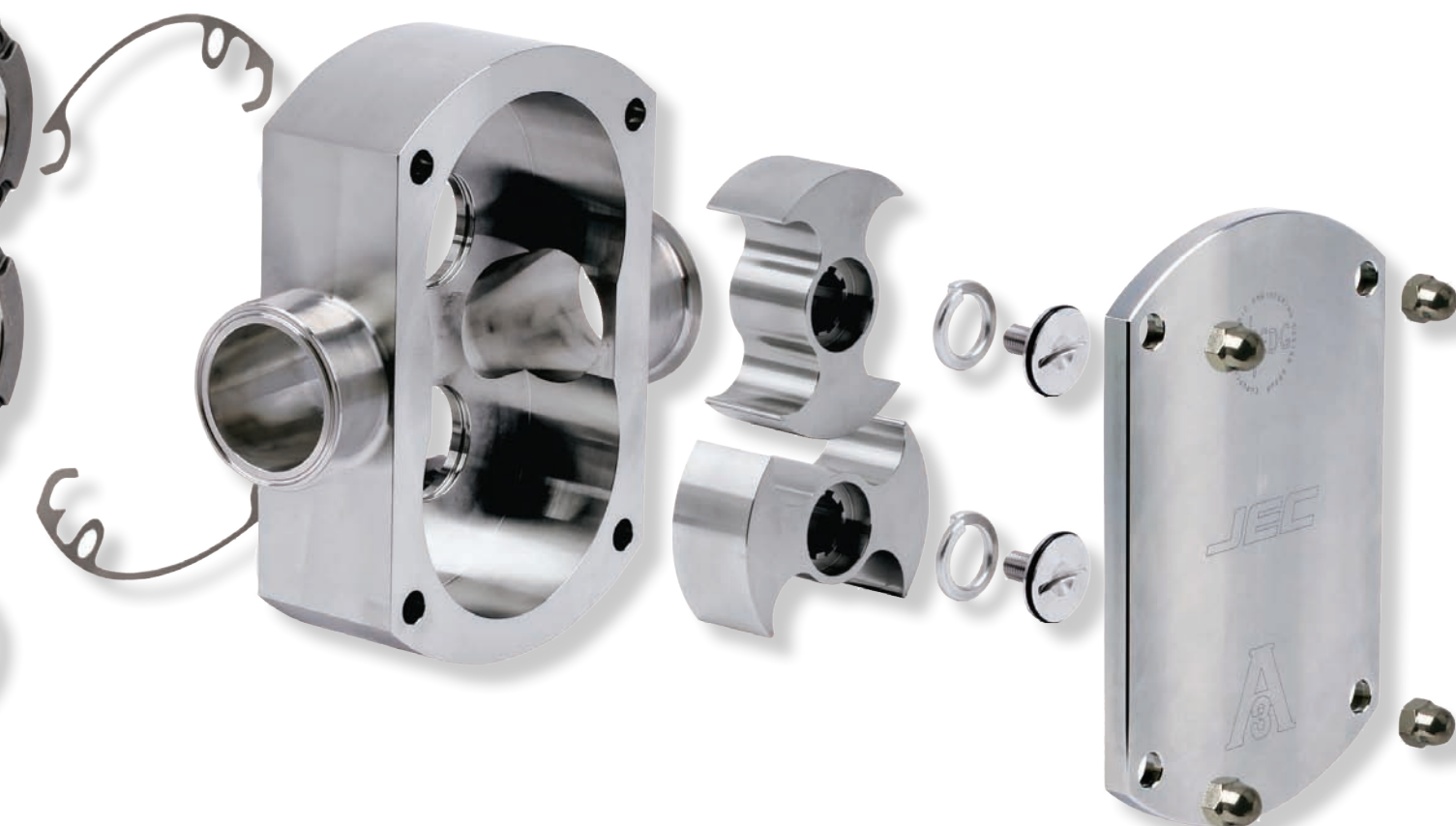
Using helical timing gears, the rotors are driven at less vibration to extend pump efficiency and seal lifetime, even under high speed and high discharge pressure.

Front Loading Seal

Front loading seals provide faster maintenance, easier cleaning and less down time. All seal options are designed for quick and simple retrofit.

ary Lobe Pumps

the best performance will be achieved for your specific application.



Ease of Shimming

Stainless steel shims being located between gearbox and casing makes it easy to adjust rotor clearance without having to completely disassemble the gear box.

Bi-Wing Rotors

A low-slip Bi-wing rotor maintains efficiency even on low viscosity products. With the longer sealing path, better solids handling. Many other rotor options available.

316L Stainless Steel

All product contact areas are standard 316L stainless steel and 25R_a surface finish meets EHEDG and 3A requirements.

100% CIPable

Optimal CIPability is achieved by minimizing the dead-end space between sealed areas.

RZL - Series Rotary Lobe Pumps



Features:

- all wetted parts are 316L stainless steel
- front loading seal options:
 - single (standard) and double mechanical seals, TC vs TC (standard)
 - single and double O-ring seals
 - triple lip seal
 - Flush option available on all seal types
- elastomers:
 - EPDM (standard), FKM, Perfluore and Kalrez®
- rotors:
 - Bi-Wing (standard)
 - Single Wing
 - Bi-Lobe
 - Tri-Lobe
 - Multi-Lobe
 - Heli-Lobe
 - Spur Gear
- connections:
 - clamp (standard), others available upon request

RZL Model No. Table

Model	Gal/100 Rev.	PSI	Port Size	Max Speed RPM
RZL105	0.53	300	1"	1000
RZL110	1.32	300	1"	1000
RZL115	3.17	175	1½"	800
RZL120	5.54	115	2"	800
RZL220	10.81	175	2"	700
RZL225	16.35	115	2½"	700
RZL330	26.90	175	3"	600
RZL340	37.98	115	4"	600
RZL440	59.88	175	4"	500
RZL450	88.10	115	5"	500

Heli-Lobe Options



Features:

- Pulsation free heli-lobe rotors gives the pump increased capacity through higher speed limits and increased suction capability through decreasing cavitation limits.
- Double and triple heli-lobe rotors with front bearing cover is designed to pump up to 290 gallons/100 rev. up to maximum **435 PSI**.

RZL - Series Rotary Lobe Pump Options



Thermal Jacket Pumps

Designed for products that require temperature control such as sugars, chocolate, corn syrup and brewer's yeast with easy attachment to pump front cover and/or casing.



Rectangular Inlet

Enlarged rectangular inlet allows highly viscous products such as semi-solid pastes or mixtures containing semi-solid pieces to be pumped.



Pressure Relief Valve

The pressure relief valve protects the system from pressure peaks or restrictions in the discharge, providing a pressure relief valve loop from discharge to the suction areas up to **145 PSI**.



Ultra Clean Pumps

Fully self-draining pump head and external rotor fixing can eliminate any contaminations and internal crevices. Excellent for sterile pharmaceuticals, ultra-hygienic food processing and aseptic manufacturing. Available in all sizes.



High Pressure Pumps

High pressure pumps have a front bearing cover to support shafts on front and back position. The well-balanced shaft design can handle pressures up to **435 PSI** without shaft deflection.



Acculab

Specially designed for superior metering accuracy with multi-lobe rotors or spur gear rotors which allow minimum pulsation, precise volumetric dosing and packaging, lab and pilot plants or manufacturing applications as well as general fluid transfer.

RZP - Series Circumfer

The design of the RZP pump meets th



Universal Mounting

Pumps can be mounted with top/bottom shaft drive, vertical/horizontal inlet/outlet.

Stainless Steel Gear Box

Standard stainless steel gear box with single oil reservoir made from precision casting offers paint free and rust free long lasting durability.

Helical Timing Gears

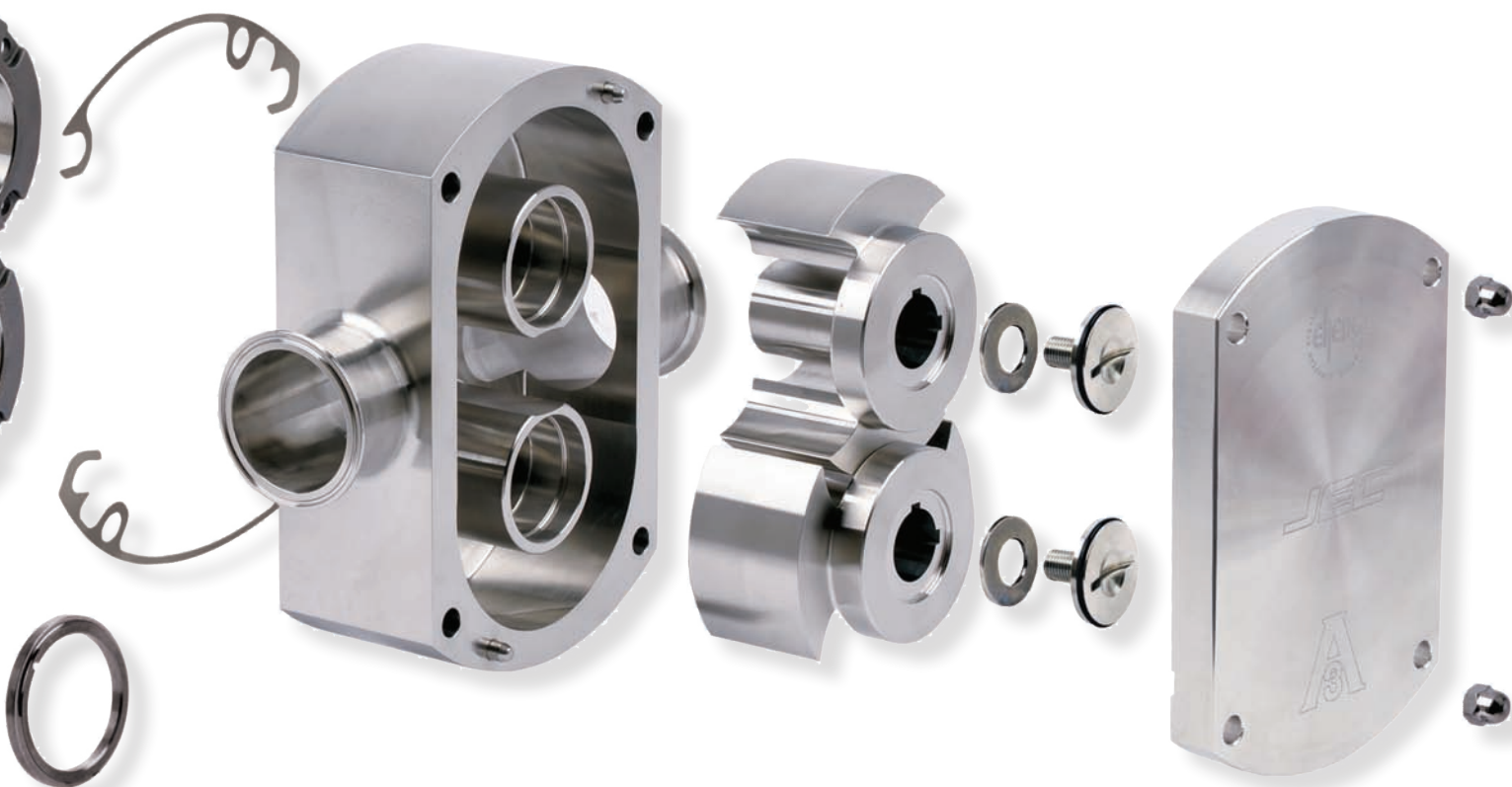
Using helical timing gears, the rotors are driven at less vibration to extend pump efficiency and seal lifetime, even under high speed and high discharge pressure.

Unique Seal Options

Front loading seals provide faster maintenance, easier cleaning and less down time. All seal options are designed for quick and simple retrofit.

Differential Piston Pumps

the most stringent sanitary standards.



Ease of Shimming

Stainless steel shims being located between gearbox and casing makes it easy to adjust rotor clearance without having to completely disassemble the gear box.

316L Rotor

Rotors are made of 316L stainless steel. The close clearances combined with the rotor geometry, which gives a long sealing path between the pump inlet and outlet, means low slip operation.

316L Stainless Steel

All product contact areas are standard 316L stainless steel and 25R_a surface finish meets EHEDG and 3A requirements.

100% CIPable

Optimal CIPability is achieved by minimizing the dead-end space between sealed areas.



RZP - Series Circumferential Piston Pumps



Features:

- all wetted parts are 316L stainless steel
- front loading seal options:
 - single (standard) and double mechanical seals, TC vs TC (standard)
 - single and double O-ring seals
 - triple lip seal
 - Flush option available on all seal types
- elastomers:
 - EPDM (standard), FKM, Perfluore and Kalrez®
- rotor:
 - 316L Bi-Wing (standard)
- connections:
 - clamp (standard), others available upon request
- options:
 - rectangular inlet
 - thermal heating jackets
 - pressure relief valve cover
 - universal series dimension base

RZP Model No. Table

Model	Gal/100 Rev.	PSI	Port Size	Max Speed RPM
RZP015	1.38	145	1½"	800
RZP030	6.86	203	2"	700
RZP060	19.54	246	2½"	600
RZP130	31.17	145	3"	600



The Right Connection™



Dixon Sanitary
Bradford™ Centrifugal Pumps
BC-Series

GOODYEAR
RUBBER PRODUCTS INC.

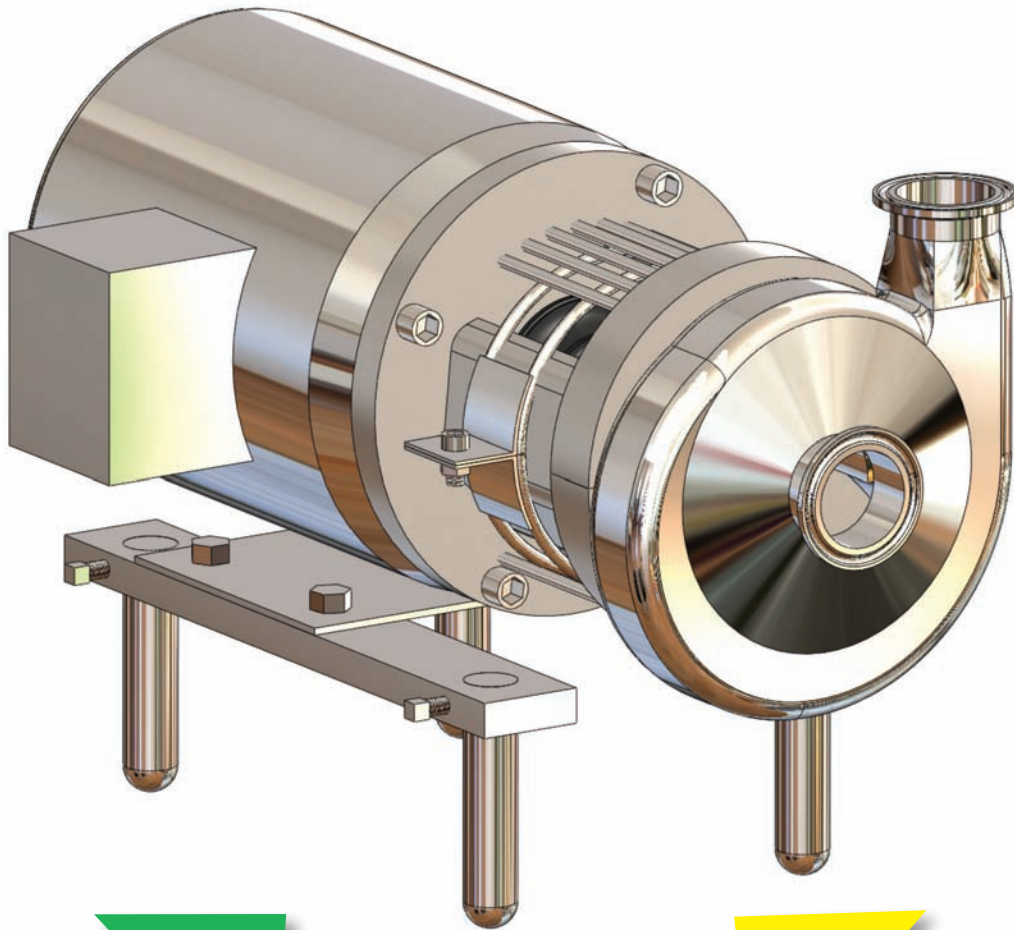
Call Toll Free: **1-866-711-4673**
WebSales@GoodyearRubberProducts.com

**We Ship
World Wide**

They All Point To:

Value

Interchangeability



Quality

1 Day Shipping *

* for in stock pumps

GOODYEAR
RUBBER PRODUCTS INC.

Call Toll Free: **1-866-711-4673**
WebSales@GoodyearRubberProducts.com

**We Ship
World Wide**

Bradford™ BC-Series Sanitary Centrifugal Pump



Beverage



Dairy



Oils



Water



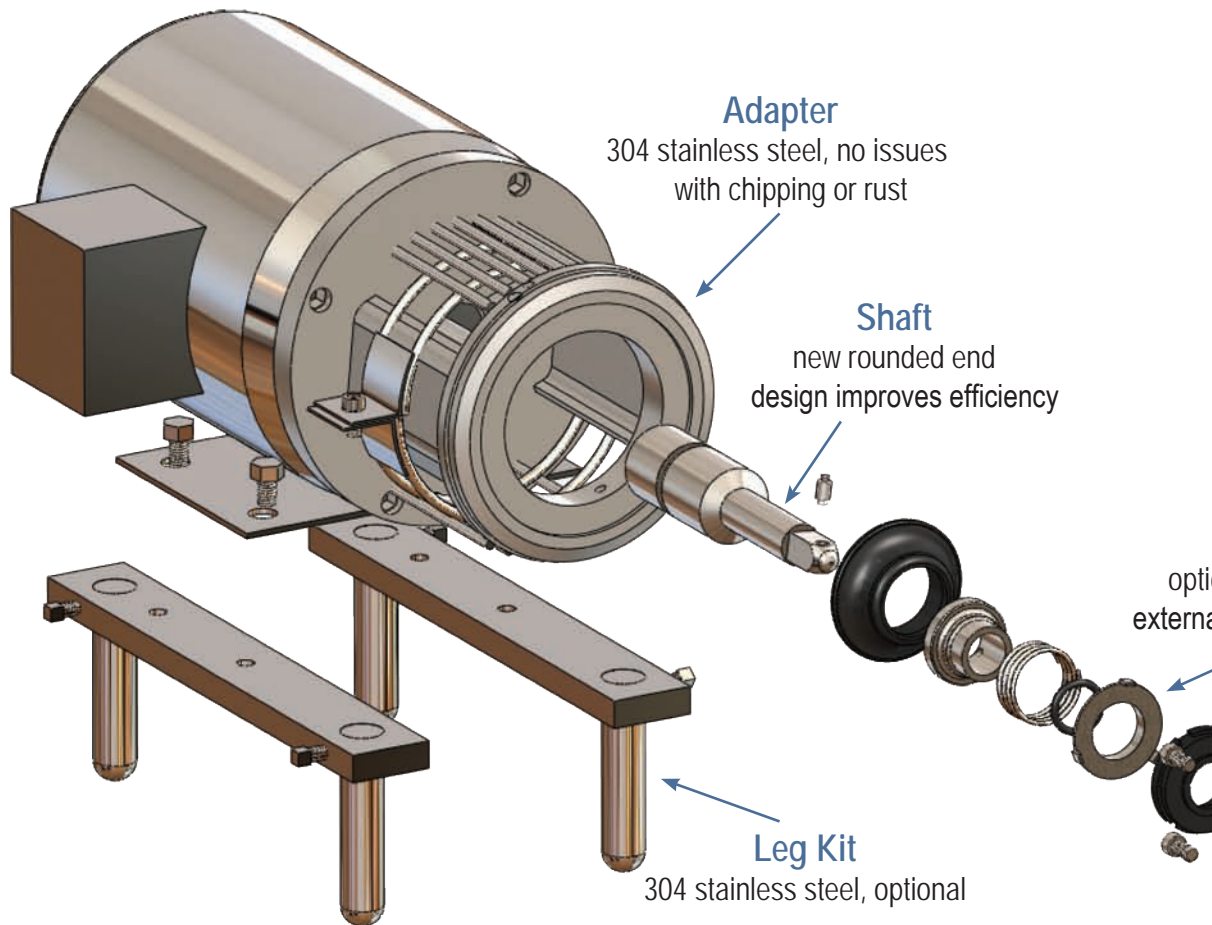
Vinegar



Cosmetics



CIP Solutions

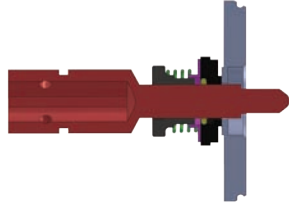


Model	Inlet	Outlet	Maximum Impeller
BC114	1½" or 2"	1½"	4"
BC216	2" or 2½"	1½"	6"
BC218	2" or 3"	1½"	8"
BC328	3" or 4"	2"	8"

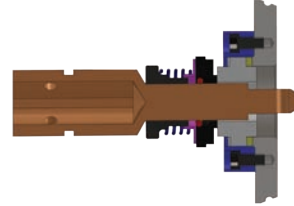
Testing:

- All assembled pumps are hydrostatically tested.
- Certified performance curves are available.

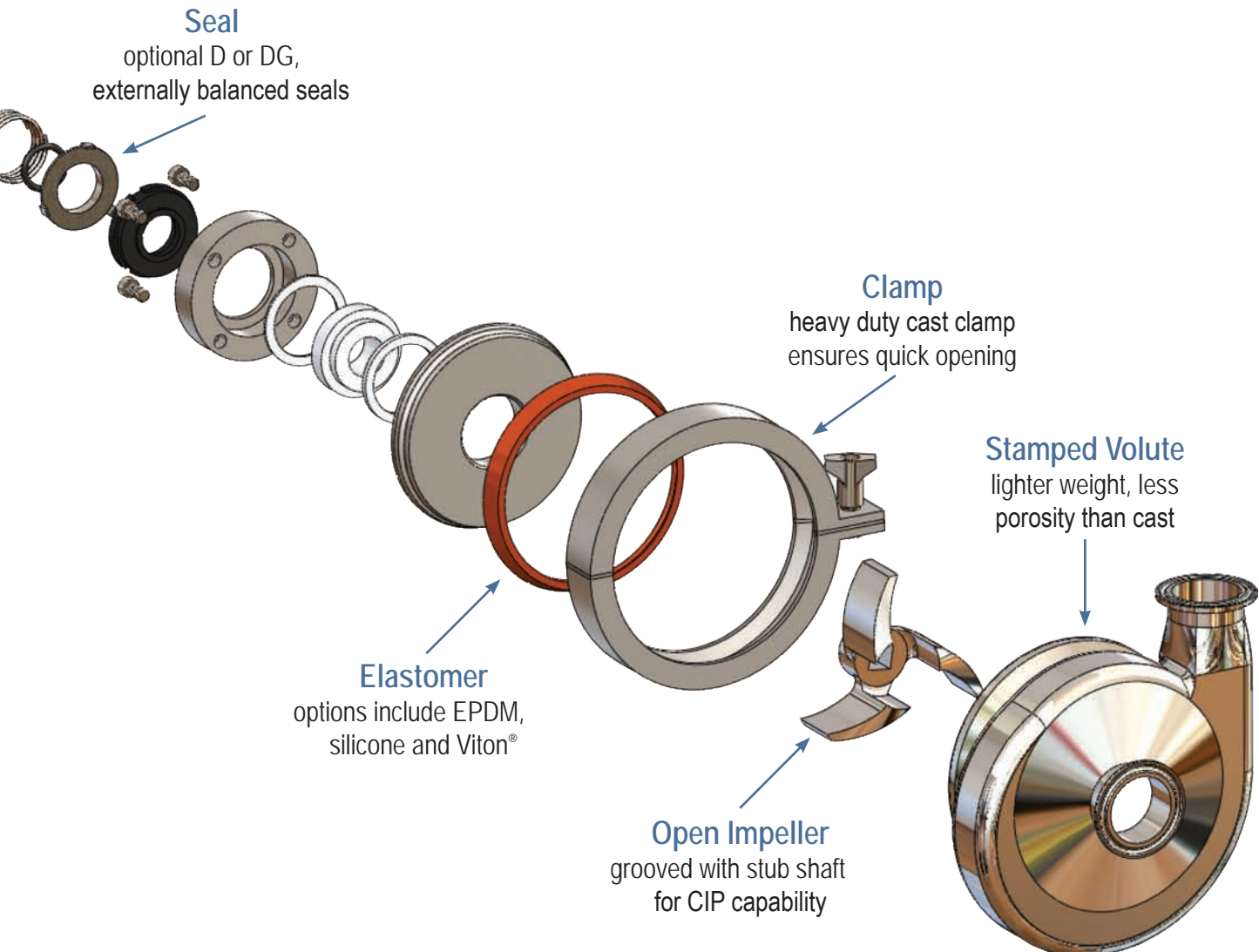
Seal Options



D External Balanced Seal - carbon rotating element on stationary stainless steel. Suitable for sanitary and industrial applications where fluid is non-abrasive and lubricating.



DG Clamped-In Seal - choose from ceramic, silicon carbide and tungsten carbide as the stationary seal. The DG seal is suitable for the majority of sanitary applications, including those using non-lubricating and abrasive fluids.



Mechanical Specifications

Standard Construction

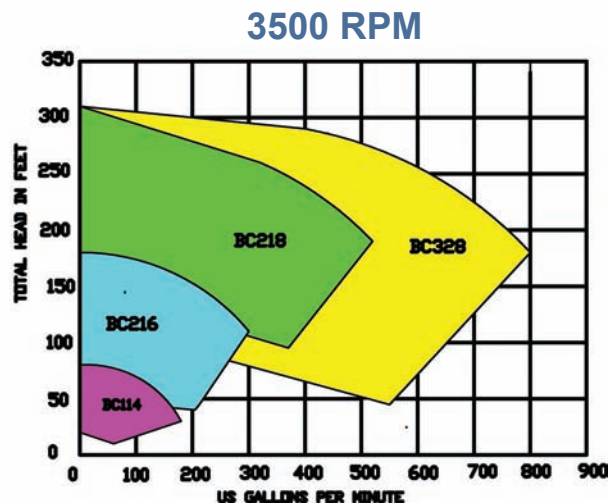
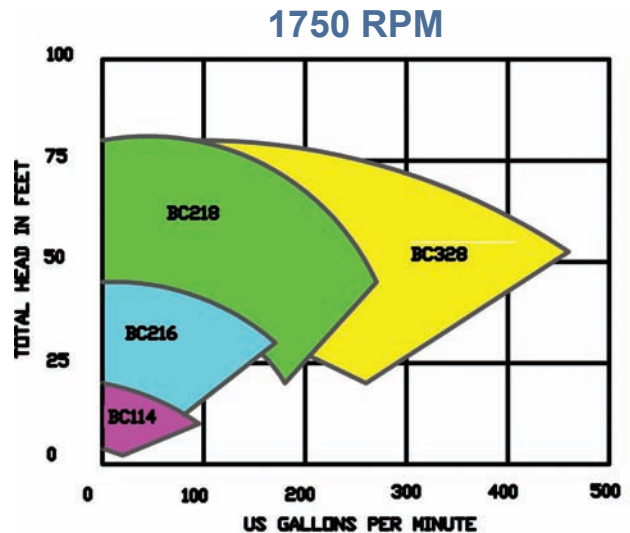
- Volute: 316L stainless steel
- Impeller: CF8M (316) stainless steel
- Backplate: 316L stainless steel
- Stub Shaft: 316L stainless steel
- Adapter: 304 stainless steel
- Optional Leg Kit: 304 stainless steel
- Seal Types: externally balanced 'D' & 'DG' with clamped in seat
- Rotary Seal Material: carbon
- DG Seal Seat Material: silicon carbide, ceramic and tungsten carbide
- Elastomers: EPDM, silicone and Viton®
- Finish: sanitary polish 32RA

Performance Characteristics

- Nominal Capacity: up to 780 GPM
- Temperature: 32°F to 212°F, consult factory for other temperatures
- Nominal speed: up to 3500 RPM - 60 Hz

Motors and Mounting

- Motor: standard C-face, 1750 & 3450 RPM, TEFC and washdown, foot mounted
- Additional motor types available upon request
- Mounting: pump head mounted to a C-Face motor



Limited Warranty

Dixon Sanitary, a division of Dixon Valve and Coupling Company, (herein called Dixon Sanitary) warrants the products described herein, and manufactured by Dixon Sanitary to be free from defects in material and workmanship for a period of one (1) year from date of shipment by Dixon Sanitary under normal use and service. Its sole obligation under this warranty being limited to repairing or replacing, as hereinafter provided, at its option any product found to Dixon Sanitary's satisfaction to be defective upon examination by it, provided that such product shall be returned for inspection to Dixon Sanitary within three (3) months after discovery of the defect. The repair or replacement of defective products will be made without charge for parts or labor. This warranty shall not apply to: (a) parts or products not manufactured exclusively for Dixon Sanitary, the warranty of such items being limited to the actual warranty extended to Dixon Sanitary by its supplier; (b) any product that has been subject to abuse, negligence, accident, or misapplication; (c) any product altered or repaired by others than Dixon Sanitary; and (d) to normal maintenance services and the replacement of service items (such as gaskets and seats) made in connection with such services. To the extent permitted by State law, this limited warranty shall extend only to the buyer and any other person reasonably expected to use or consume the goods who is injured in person by any breach of the warranty. No action may be brought against Dixon Sanitary for an alleged breach of warranty unless such action is instituted within one (1) year from the date the cause of action accrues. This limited warranty shall be construed and enforced to the fullest extent allowable by applicable State law.

OTHER THAN THE OBLIGATION OF DIXON SANITARY SET FORTH HEREIN, DIXON SANITARY DISCLAIMS ALL WARRANTIES, EXPRESS OR IMPLIED, INCLUDING BUT NOT LIMITED TO ANY IMPLIED WARRANTIES OF MERCHANTABILITY OR FITNESS FOR A PARTICULAR PURPOSE, AND ANY OTHER OBLIGATION OR LIABILITY. THE FOREGOING CONSTITUTES DIXON SANITARY SOLE OBLIGATION WITH RESPECT TO DAMAGES, WHETHER DIRECT, INCIDENTAL OR CONSEQUENTIAL, RESULTING FROM THE USE OR PERFORMANCE OF THE PRODUCT.

Some products and sizes may be discontinued when stock is depleted, or may require a minimum quantity for ordering.

NOTE: Reasonable care has been taken in preparing this catalog. Dixon Sanitary, a division of Dixon Valve & Coupling Company, reserves the right to make corrections and any dimensional changes.