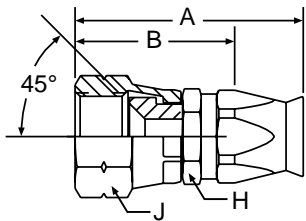


FIELD ATTACHABLE FITTINGS

20890 - 45° SAE Female Swivel

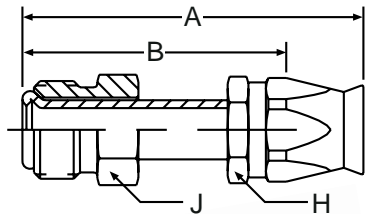


90 Series Field Attachable

Hose Number	Part Number	Thread Size	Deduct Length
-06	20890-6-6	5/8" -18	1-5/16"
-12	20890-12-12	1-1/16" -14	1-11/16"

NOTES: Brass nipple, ferrule, steel nut & socket.

22890 - Male Inverted Flare Swivel

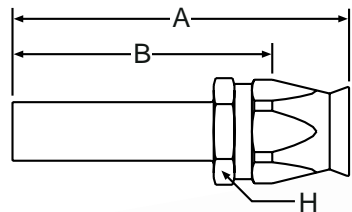


90 Series Field Attachable

Hose Number	Part Number	Thread Size	Deduct Length
-04	22890-4-4	7/16" - 24	1-5/8"
-05	22890-5-5	1/2" - 20	1-11/16"
-06	22890-5-6	1/2" - 20	1-11/16"
-06	22890-6-6	5/8" - 18	1-3/4"
-08	22890-8-8	3/4" - 18	1-3/4"
-10	22890-10-10	7/8" - 18	2-1/8"
-12	22890-12-12	1-1/16" - 16	2-3/8"

NOTES: Brass ferrule, steel tube, nut & socket.

23490 - Straight Tube



90 Series Field Attachable

Hose Number	Part Number	Tube Size	Deduct Length
-08	23490-8-8	1/2"	2-7/16"
-10	23490-8-10	1/2"	2-1/2"
-08	23490-10-8	5/8"	2-11/16"
-10	23490-10-10	5/8"	2-5/8"
-12	23490-12-12	3/4"	3-1/16"

NOTES: Brass nipple and ferrule, steel socket.

Smoothbore
PTFE Hose

Convuluted
PTFE Hose

Flare Seal
Hose

Silicone
Hose

Specialty
Hoses

Fittings
Field Attachable

Accessories

Technical
Help

Warranty



Parker Hannifin, Parflex Division