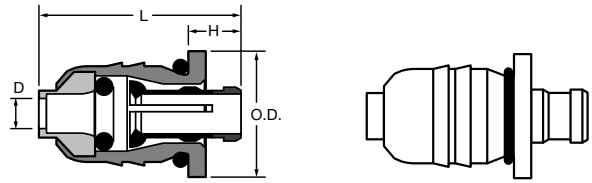


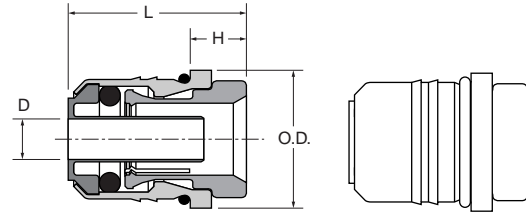
**Encapsulated Cartridge PMCEN-Replaceable Button (PMB listed below)**

PART NO.	TUBE SIZE	L	H	O.D.	FLOW DIA. D
PMCEN-2ES	1/8	.59	.18	.406	.094
PMCEN-5/32ES	5/32	.59	.18	.406	.125
PMCEN-3ES	3/16	.59	.18	.437	.156
PMCEN-4ES	1/4	.62	.18	.500	.188
PMCEN-6ES	3/8	.81	.18	.750	.312
PMCEN-8ES	1/2	.94	.18	.875	.375



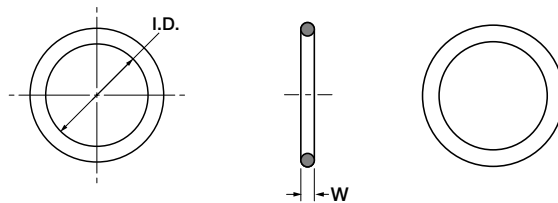
**Encapsulated Cartridge PMTCER-Removeable Collet and O-ring**

PART NO.	TUBE SIZE	L	H	O.D.	FLOW DIA. D
PMT CER-4ES	1/4	.65	.21	.500	.138
PMT CER-6ES	3/8	.84	.21	.750	.215
PMT CER-8ES	1/2	.97	.21	.875	.336
PMT CER-10ES	5/8	1.18	.21	.860	.400
PMT CER-12ES	3/4	1.16	.19	.860	.125



**External Seal ES\***

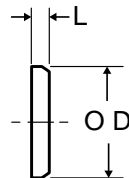
PART NUMBER	TUBE SIZE	I.D.	W
ES-2†	1/8	.283	.040
ES-3	3/16	.314	.040
ES-4	1/4	.390	.040
ES-6	3/8	.585	.060
ES-8	1/2	.706	.060



\*Material is Nitrite (Buna N), 70 Durometer  
 † Note: ES2 is to be used with PMCEN-2 and PMCEN-5/32

**Removable Cartridge Button PMB**

PART NUMBER	TUBE SIZE	O.D.	L
2PMB-X	1/8	.335	.109
5/32PMB-X	5/32	.335	.109
3PMB-X	3/16	.397	.109
4PMB-X	1/4	.460	.109
6PMB-X	3/8	.710	.109
8PMB-X	1/2	.835	.109



Specify Color When Ordering,  
 Example: 2PMB-BU  
 Colors Available:  
 BU-Blue G-Green O-Orange  
 P-Purple R-Red Y-Yellow  
 W-White BL-Black GY-Gray

**For PMCEN Cartridges only**