

BELT ACCESSORIES

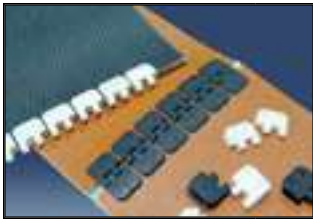
Alligator Lace

Beltservice supplies a complete inventory of sizes, lengths and types.



Alligator Plastic Rivet Fastener

Rugged plastic fastener for black and food grade belts. Installed in the factory or in the field with special tools.



Belt Dressing

Used to increase traction between belt and pulley and as a preservative.

- Liquid
- Aerosols
- Bar
- Neatsfoot Oil

Belt Scrapers (Urethane)

Available in various hardness and compounds, including food grade.

Clipper Lace

The full range of sizes, types, lacers, accessories.



Cold Vulcanizing Cements

- Rubber
- PVC
- Hot or Cold Bond

For splicing belts endless; bonding cleats, flanges, V-guides; laminations; lagging pulleys; bonding rubber to metal; repairing belts. **For use in field or shop.**

Edge Sealing

- Latex
- Urethane

Used to seal belt edges to protect against fraying and moisture penetration.

Elevator Belts and Nuts

To join elevator belt ends. Overlap-butt joint-pad joint; most popular sizes in stock.

Elevator Buckets

A wide variety of sizes and styles are available for most any elevating application.



Flexco Fasteners

- Plate Type
- Rivet Type
- Hinged Type



Leader Wire Pins

Recommended for belts 48" and wider to make inserting the nylon-covered cable easier.

Comes complete with leader wire, connecting sleeve, and nylon-covered cable pin.

Leather Products

Flat belt, round leather belt, lace leather, leather washers.

Minet Fasteners

Mechanical fasteners for a wide variety of conveying applications.

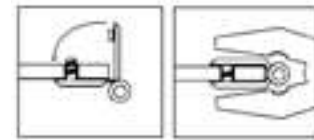


Plastic Fasteners

Will beat metal detector units; ideal for food industry; can be steam sterilized; resists most chemicals; easily installed.

Constructed of a plastic nylon suitable for lightweight conveyor belting. It is economical compared to vulcanizing and can be separated for fast installation and removal. Unlike conventional metal fasteners it is safe to operators and will not damage goods that are conveyed. Available in packages sufficient to lace 24"-wide belts. Size B, C, & D.

A reusable template is required for each use.



Pulley Lagging

Smooth, seamless urethane, drive screws, lagging cement.

Pulleys

- Conveyor/Elevator
- Winged Pulleys
- Paper Pulleys

Rubber Splice Kits

Component materials furnished for splicing belts endless in field or shop.

Sewing Machine Belt

- Round Leather
- V-O-V Type

Aerosols to Lubricate

- Silicone Spray

Spiral Lace

Mechanical fastener vulcanized into belt. Allows use on extremely small diameter pulleys.

Tatch-A-Cleat

Bolt-on cleats in a variety of compounds including rubber and PVC. Quickly attaches to belt, and is easily removed.



Urethane Round Belt

- Solid
- Hollow
- Plastic Fasteners

Urethane Splice Kits

To cover lacing so product will not mar.

For more information on lacing and mechanical fasteners, see page 25.

Skirtboard Rubber/Chute Lining

Used at the point of loading for guiding product onto the center of the belt and for protecting metal parts. Also useful for lining metal and wood chutes, hoppers, and troughs. Commonly found in construction, sand and gravel operations, quarries and mines, and in feed and grain applications.

84 1/4" Skirtboard

85 3/8" Skirtboard

85a 1/2" Skirtboard

85b 3/4" Skirtboard

85c 1" Skirtboard