



## PRODUCT CATALOG

IDEAL and TRIDON Brand Clamps for Automotive,  
Hardware, Industrial, Marine, M.R.O., O.E.M.  
and Plumbing Applications



## SUPERIOR QUALITY AND CLAMPING EXPERTISE

Ideal is a leading manufacturer and supplier of clamping and joint sealing products worldwide. With over 90 years of experience in clamping technology, we've employed advanced materials and cutting-edge technology to construct innovative, superior quality clamping and sealing products for both simple and extraordinary uses.

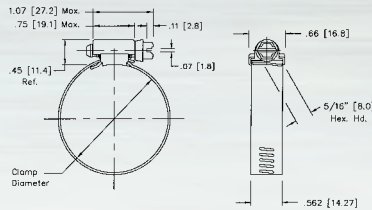
Setting the industry standard for fastener engineering expertise, we offer a broad range of Ideal and Tridon brand worm drive hose clamps, high-torque clamps, constant tension clamps and a host of specialty and custom clamping products, available in a variety of material types and configurations. Our one-piece mechanical design locks the housing directly to the band to provide maximum strength and anti-shear protection.

Let us help you find a clamp or design one that fits your specific requirements.



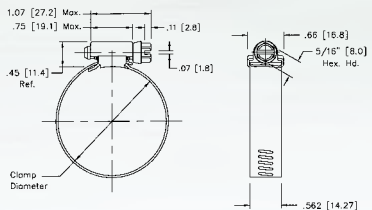
## FULL-SIZE 9/16" WORM DRIVE CLAMPS

The industry standard, these versatile clamps have a wide range of applications. From simple home and auto repair to heavy industrial uses, you can be sure there's a full-size clamp to handle the job.



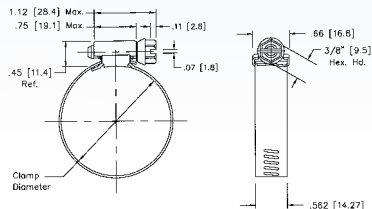
### Ideal 50 Series / Tridon 150 Series

Our most popular full-size clamp.  
Screw: 5/16" hex-head. Plated carbon steel.  
Band and housing: 9/16" design. 201/301 stainless steel.



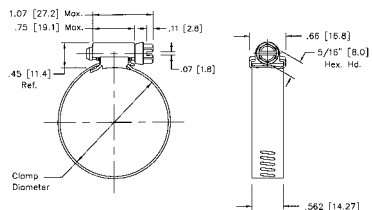
### Ideal 63 Series / Tridon 225 Series

High-nickel grade stainless steel clamp for boating applications and other corrosive environments.  
Screw: 5/16" hex-head. Corrosion-resistant high-nickel grade stainless steel.  
Band and housing: 9/16" design. High-nickel grade stainless steel.



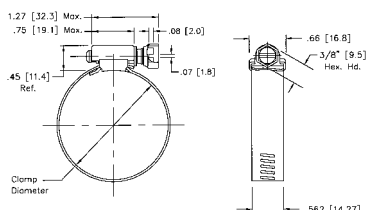
### Ideal 64 Series (Tridon N/A)

All stainless steel construction especially suited to industrial applications.  
Screw: 3/8" hex-head. 410 stainless steel.  
Band and housing: 9/16" design. 201/301 grade stainless steel.



### Ideal 68 Series (Tridon N/A)

All stainless steel construction especially suited to industrial applications.  
Screw: 5/16" hex-head. 410 stainless steel.  
Band and housing: 9/16" design. 201/301 grade stainless steel.



### Combo-Hex®

Combo-Hex clamps are the clamps professional mechanics choose most often. Particularly helpful in hard-to-reach areas, they feature an exclusive, safety-collared, deep-slotted screw design that prevents screwdrivers from slipping and puncturing the hose wall. Combo-Hex clamps can be installed with a screwdriver, nutdriver or socket wrench.

### Ideal 54 Series (Tridon N/A)

The professional mechanic's choice.  
Screw: 3/8" safety-collared hex-head. Plated carbon steel.  
Band and housing: 9/16" design. 201/301 stainless steel.

N/A - Not Available



FULL SIZE CLAMPS											CLAMPING RANGE					
SAE Sizes	Ideal Part No.	Tridon Part No.	Ideal Part No.	Tridon Part No.	Ideal Part No.	Tridon Part No.	Ideal Part No.	Tridon Part No.	Ideal Part No.	Tridon Part No.	English (in.)		Metric (mm)		Fits Hose I.D.	
	50	150	54	N/A	63	225	64	N/A	68	N/A	Min. Dia.	Max. Dia.	Min. Dia.	Max. Dia.	Min. (in.)	Max. (in.)
6	5006	-	5406	-	6306	-	6406	-	6806	-	3/8	7/8	10	22	5/16	3/8
8	5008	-	5408	-	6308	-	6408	-	6808	-	7/16	1	11	25	5/16	1/2
10	5010	150-010	5410	-	6310	225-010	6410	-	6810	-	1/2	1 1/16	13	27	3/8	5/8
12	5012	150-012	5412	-	6312	225-012	6412	-	6812	-	1/2	1 1/4	13	32	3/8	3/4
16	5016	150-016	5416	-	6316	225-016	6416	-	6816	-	11/16	1 1/2	18	38	3/4	7/8
20	5020	150-020	5420	-	6320	225-020	6420	-	6820	-	3/4	1 3/4	19	44	3/4	1 1/8
24	5024	150-024	5424	-	6324	225-024	6424	-	6824	-	1	2	25	51	7/8	1 3/8
28	5028	150-028	5428	-	6328	225-028	6428	-	6828	-	1 1/4	2 1/4	32	57	1 1/4	1 5/8
32	5032	150-032	5432	-	6332	225-032	6432	-	6832	-	1 1/2	2 1/2	38	63	1 1/2	1 7/8
36	5036	150-036	5436	-	6336	225-036	6436	-	6836	-	1 3/4	2 3/4	44	70	1 3/4	2
40	5040	150-040	5440	-	6340	225-040	6440	-	6840	-	2	3	51	76	2	2 1/4
44	5044	150-044	5444	-	6344	225-044	6444	-	6844	-	2 1/4	3 1/4	57	82	2 1/4	2 1/2
48	5048	150-048	5448	-	6348	225-048	6448	-	6848	-	2 1/2	3 1/2	64	89	2 1/4	2 3/4
52	5052	150-052	5452	-	6352	225-052	6452	-	6852	-	2 3/4	3 3/4	70	95	2 3/4	3
56	5056	150-056	5456	-	6356	225-056	6456	-	6856	-	3	4	76	101	3	3 1/2
60	5060	150-060	-	-	6360	225-060	6460	-	6860	-	3 1/4	4 1/4	83	108	3 1/4	3 3/4
64	5064	150-064	-	-	6364	225-064	6464	-	6864	-	2 1/2	4 1/2	64	114	2 1/2	4
72	5072	150-072	-	-	6372	225-072	6472	-	6872	-	3	5	76	127	3	4 1/2
80	5080	150-080	-	-	6380	225-080	6480	-	6880	-	3 1/2	5 1/2	89	140	3 1/2	5
88	5088	150-088	-	-	6388	225-088	6488	-	6888	-	4	6	102	152	4	5 1/2
96	5096	150-096	-	-	6396	225-096	6496	-	6896	-	4 1/2	6 1/2	114	165	4 1/2	6
104	50104	150-104	-	-	63104	225-104	64104	-	68104	-	5	7	127	178	5	6 1/2
116	-	-	-	-	63116	225-116	-	-	68116	-	5 3/4	7 3/4	146	197	5 1/2	7
128	-	-	-	-	63128	225-128	-	-	-	-	2 1/2	8 1/2	64	216	3	7 1/2
140	-	-	-	-	63140	225-140*	-	-	-	-	7 1/4	9 1/4	184	235	7 1/2	8 1/2
152	-	-	-	-	63152	225-152	-	-	-	-	2	10	51	254	2 1/2	9 1/2
164	-	-	-	-	63164	225-164*	-	-	-	-	2	10 3/4	51	273	2 1/2	10
176	-	-	-	-	63176	225-176*	-	-	-	-	9 1/2	11 1/2	241	292	10	11
188	-	-	-	-	63188	225-188*	-	-	-	-	2	12 1/4	51	311	2 1/2	11 1/2
208	-	-	-	-	63208	225-208*	-	-	-	-	11 1/2	13 1/2	292	343	12	13
224	-	-	-	-	63224	225-224*	-	-	-	-	12 1/2	14 1/2	318	368	13	14
236	-	-	-	-	63236	225-236*	-	-	-	-	13 1/4	15 1/4	337	387	13 1/2	14 1/2
248	-	-	-	-	63248	225-248*	-	-	-	-	2	16	51	406	2 1/2	15 1/2

Additional sizes available - Contact Ideal for information

\* Non-stocking item

N/A - Not Available

## 1/2" BAND CLAMPS



1/2" band clamps are suitable for most common home and automotive applications.

### Ideal 57 Series / Tridon 611 Series

Screw: 5/16" hex-head.  
Plated carbon steel.

Band and housing: 1/2" design.  
201/301 stainless steel.

### Ideal 67-1 Series / Tridon 625 Series Tridon Automotive Series "HSS"

Screw: 5/16" hex-head.  
410 stainless steel (Ideal).  
305 stainless steel (Tridon).

Band and housing: 1/2" design.  
201/301 stainless steel.

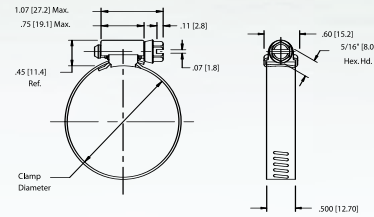
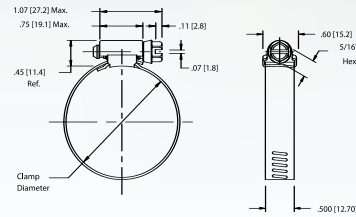
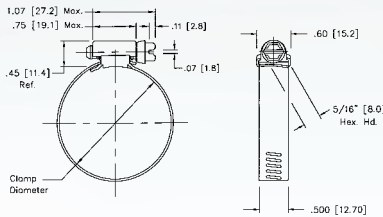
### Ideal 67-5 Series / Tridon 620 Series

Screw: 5/16" hex-head.  
High-nickel grade stainless steel.

Band and housing: 1/2" design.  
High-nickel grade stainless steel.



Measurements in illustrations are in inches [millimeters]



1/2" BAND CLAMPS							CLAMPING RANGE					
SAE Sizes	Ideal Part No.	Tridon Part No.	Ideal Part No.	Tridon Part No.	Ideal Part No.	Tridon Part No.	English (in.)		Metric (mm)		Fits Hose I.D.	
							Min.	Dia.	Max.	Dia.	Min.	Dia.
	<b>57</b>	<b>611</b>	<b>67-1</b>	<b>625</b> <sup>(1)</sup>	<b>67-5</b>	<b>620</b>						
6	5706	611-006	6706-1	625-006	6706-5	620-006	3/8	7/8	10	22	5/16	3/8
8	5708	611-008	6708-1	625-008	6708-5	620-008	7/16	1	11	25	5/16	1/2
10	5710	611-010	6710-1	625-010	6710-5	620-010	1/2	1 1/16	13	27	3/8	5/8
12	5712	611-012	6712-1	625-012	6712-5	620-012	1/2	1 1/4	13	32	3/8	3/4
16	5716	611-016	6716-1	625-016	6716-5	620-016	11/16	1 1/2	18	38	3/4	7/8
20	5720	611-020	6720-1	625-020	6720-5	620-020	3/4	1 3/4	19	44	3/4	1 1/8
24	5724	611-024	6724-1	625-024	6724-5	620-024	1	2	25	51	7/8	1 3/8
28	5728	611-028	6728-1	625-028	6728-5	620-028	1 1/4	2 1/4	32	57	1 1/4	1 5/8
32	5732	611-032	6732-1	625-032	6732-5	620-032	1 1/2	2 1/2	38	63	1 1/2	1 7/8
36	5736	611-036	6736-1	625-036	6736-5	620-036	1 3/4	2 3/4	44	70	1 3/4	2
40	5740	611-040	6740-1	625-040	6740-5	620-040	2	3	51	76	2	2 1/4
44	5744	611-044	6744-1	625-044	6744-5	620-044	2 1/4	3 1/4	57	82	2 1/4	2 1/2
48	5748	611-048	6748-1	625-048	6748-5	620-048	2 1/2	3 1/2	64	89	2 1/2	2 3/4
52	5752	611-052	6752-1	625-052	6752-5	620-052	2 3/4	3 3/4	70	95	2 3/4	3
56	5756	611-056	6756-1	625-056	6756-5	620-056	3	4	76	101	3	3 1/2
60	5760	611-060	6760-1	625-060	6760-5	620-060	3 1/4	4 1/4	83	108	3 1/4	3 1/2
64	5764	611-064	6764-1	625-064	6764-5	620-064	2 1/2	4 1/2	64	114	2 1/2	4
72	5772	611-072	6772-1	625-072	6772-5	620-072	3	5	76	127	3	4 1/2
80	5780	611-080	6780-1	625-080	6780-5	620-080	3 1/2	5 1/2	89	140	3 1/2	5
88	5788	611-088	6788-1	625-088	6788-5	620-088	4	6	102	152	4	5 1/2
96	5796	611-096	6796-1	625-096	6796-5	620-096	4 1/2	6 1/2	114	165	4 1/2	6
104	57104	611-104	67104-1	625-104	67104-5	620-104	5	7	127	178	5	6 1/2

<sup>(1)</sup> Automotive Series "HSS"

Additional sizes available - Contact Ideal for information

## SMALL DIAMETER CLAMPS

### Micro-Gear® Clamps

Micro-Gear clamps are tiny, tough and precision engineered for use in such small hose applications as emission control, fuel lines and vacuum hoses. Their slim, 5/16" band and low profile housing make them easy to install in confined areas.

#### Ideal 62P Series Tridon 325 Series

Screw: 1/4" hex-head.  
Plated carbon steel.

Band and housing: 5/16" design.  
201/301 stainless steel.

#### Tridon 350 Series (Ideal N/A) Tridon Automotive Series "MAH"

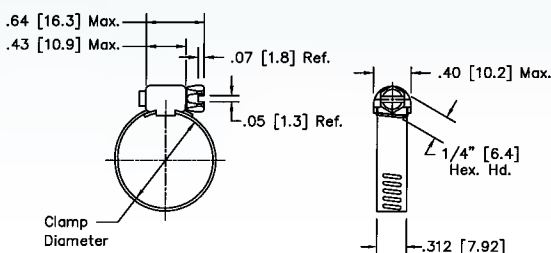
Screw: 1/4" hex-head.  
410 stainless steel.

Band and housing: 5/16" design.  
201/301 grade stainless steel.

#### Ideal 62M Series Tridon 345 Series

Screw: 1/4", high-nickel grade stainless steel.

Band and housing: 5/16" design.  
High-nickel grade stainless steel.



MICRO GEAR CLAMPS								CLAMPING RANGE					
SAE Sizes	Ideal Part No.	Tridon Part No.	Ideal Part No.	Tridon Part No.	Ideal Part No.	Tridon Part No.	English (in.)		Metric (mm)		Fits Hose I.D.		
							Min.Dia.	Max.Dia.	Min.Dia.	Max.Dia.	Min.(in.)	Max.(in.)	
	<b>62P</b>	<b>325</b>	<b>62M</b>	<b>345</b>	<b>N/A</b>	<b>350</b> <sup>(1)</sup>							
4	6204 <sup>(2)</sup>	325-004	62604 <sup>(4)</sup>	345-004	-	350-004	1/4	5/8	6	16	1/8	5/16	
5	62P05	325-005	62M05	345-005	-	350-005	1/4	11/16	7	17	1/8	3/8	
6	6206 <sup>(3)</sup>	325-006	62606	345-006	-	350-006	5/16	7/8	8	22	1/4	7/16	
8	62P08	325-008	62M08	345-008	-	350-008	3/8	1	10	25	5/16	1/2	
10	62P10	325-010	62M10	345-010	-	350-010	3/8	1 1/16	10	27	5/16	5/8	
12	62P12	325-012	62M12	345-012	-	350-012	1/2	1 1/4	13	32	5/8	3/4	
16	62P16	325-016	62M16	345-016	-	350-016	1/2	1 1/2	13	38	5/8	1	
20	62P20	325-020	62M20	345-020*	-	350-020	3/4	1 3/4	19	44	1	1 1/4	
24	62P24	325-024	62M24	345-024*	-	350-024	1	2	26	51	1 1/4	1 1/2	
28	62P28	325-028	62M28	345-028*	-	350-028	1 1/4	2 1/4	32	57	1 1/2	1 3/4	
30	62P30	325-030*	62M30	345-030*	-	350-030	1 3/8	2 3/8	35	60	1 5/8	1 7/8	
32	62P32	325-032	62M32	345-032*	-	350-032	1 1/2	2 1/2	38	63	1 3/4	2	
36	62P36	325-036	62M36	345-036*	-	350-036	1 3/4	2 3/4	45	70	2	2 1/4	
44	62P44	325-044*	62M44	345-044*	-	350-044	2 1/4	3 1/4	57	82	2 1/4	2 3/4	
48	62P48	325-048*	62M48	345-048*	-	350-048	2 1/2	3 1/2	64	89	2 1/2	3	

<sup>(1)</sup> Automotive Series "MAH" <sup>(3)</sup> Old #6203 <sup>(4)</sup> Old #62602 Additional sizes available - Contact Ideal for information  
<sup>(2)</sup> Old #6202 <sup>(4)</sup> Old #62602 \* Non-stocking item



### Fuel Injection Clamps

Fuel injection system clamps are designed to provide the uniform sealing pressure required on fuel injection hose.

They feature non-perforated rolled-edge bands with a special nut and bolt-tightening design.

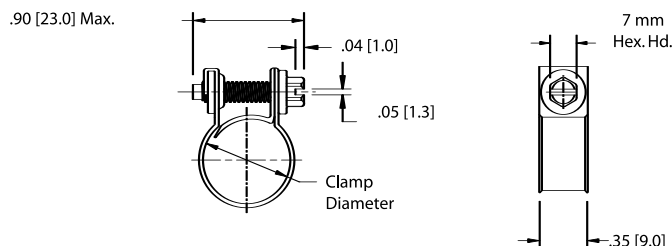
#### Ideal 52F Series / Tridon 905 Series Tridon Automotive Series "F.I."

Screw: 7mm hex-head.  
Zinc-plated, clear chromate, carbon steel.

Band: 9mm wide.  
Zinc-plated, clear chromate, carbon steel.

FUEL INJECTION CLAMPS				CLAMPING RANGE				Fits Hose I.D.
SAE Sizes	Ideal Part No.	Tridon Part No.	English (in.)		Metric (mm)			
	<b>52F</b>	<b>905</b> <sup>(1)</sup>	Min.Dia.	Max.Dia.	Min.Dia.	Max.Dia.		
4	52F13	905-004	7/16	1/2	11	13	1/4"	
6	52F15	905-006	1/2	9/16	13	15	5/16"	
8	52F16	905-008	9/16	5/8	14	16	3/8"	

<sup>(1)</sup> Automotive Series "F.I."



N/A - Not Available

# GENERAL PURPOSE



## AC CLAMPS

Stainless steel locator bar helps assure proper positioning of clamps over air conditioning fitting.

### Ideal 62 Series / Tridon 684 Series Tridon Automotive Series "AC"

Screw: 5/16" hex-head. Plated carbon steel.  
Band: 1/2" design. Stainless steel.  
Housing: Plated carbon steel.

## MILITARY WORM DRIVE CLAMPS

Manufactured to Military Specifications MS35842 and AA-52506B.

### Ideal 62MS Series / Tridon 632 Series

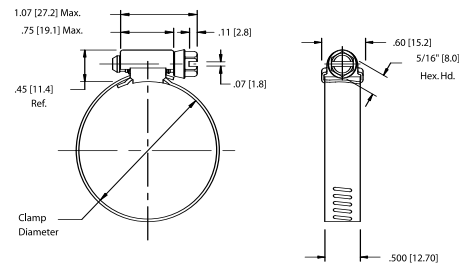
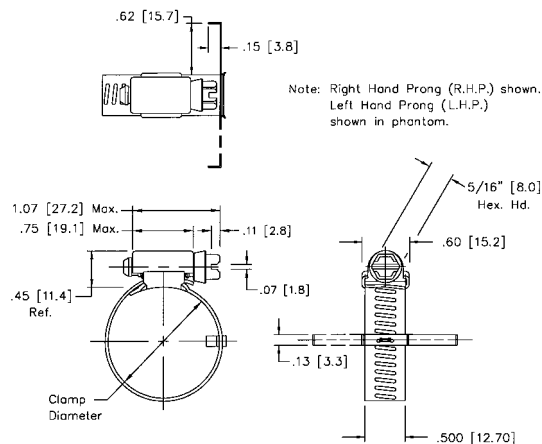
Screw: 5/16" hex-head stainless steel.  
Band and housing: 1/2" design.  
201/301 stainless steel.

AC CLAMPS			CLAMPING RANGE			
SAE Sizes	Ideal Part No.	Tridon Part No.	English (in.)		Metric (mm)	
			Min. Dia.	Max. Dia.	Min. Dia.	Max. Dia.
	<b>62</b>	<b>684</b> <sup>(1)</sup>				
8	6274	684-008	7/16	1	11	25
12	6277	684-012	1/2	1 1/4	13	32

<sup>(1)</sup> Automotive Series "AC"

MILITARY SPEC CLAMPS		CLAMPING RANGE			
Ideal Part No.	Tridon Part No.	English (in.)		Metric (mm)	
		Min. Dia.	Max. Dia.	Min. Dia.	Max. Dia.
<b>62MS</b>	<b>632</b>				
6210	632-006	3/8	7/8	10	22
6211	632-012	1/2	1 1/4	13	32
6212	632-024	1	2	26	51
6213	632-036	1 3/4	2 3/4	44	70
6214	632-048	1 1/2	3 1/2	38	89
6215	632-060	2 1/4	4 1/4	57	108
6216	632-104*	4	7	102	178

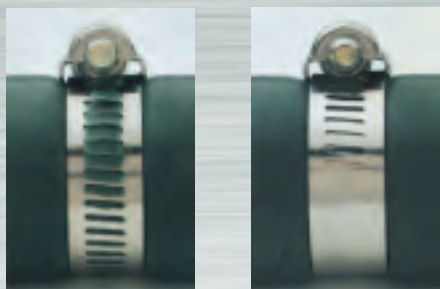
\* Non-stocking item



Measurements in illustrations are in inches [millimeters]

## LINED CLAMPS

Lined clamps are specially designed for use with silicone rubber and other soft hose applications. The liner protects the hose surface and prevents it from extruding or shearing through the band notches as the clamp is tightened.



Hose installed with unlined clamp

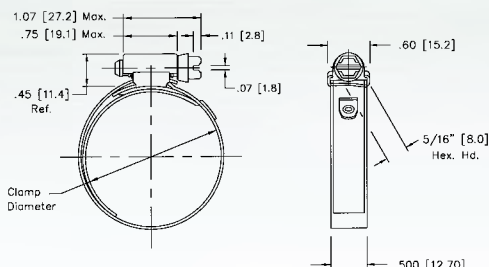
Hose installed with lined clamp



### Ideal 53 Series / Tridon 613 Series Tridon Automotive Series "ET"

Screw: 5/16" hex-head.  
Plated carbon steel.

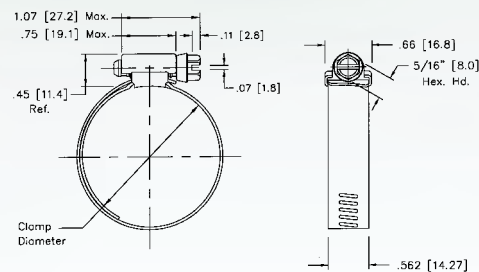
Band, liner and housing: 1/2" design.  
201/301 stainless steel.



Also Available In  
**316**  
STAINLESS STEEL

### Ideal 65E Series / Tridon 615 Series

Screw: 5/16" hex-head. High-nickel grade stainless steel.  
Band, liner and housing: 9/16" (Ideal); 1/2" (Tridon).  
High-nickel grade stainless steel.



Measurements in illustrations are in inches [millimeters]

LINED CLAMPS					CLAMPING RANGE					
SAE Sizes	Ideal Part No.	Tridon Part No.	Ideal Part No.	Tridon Part No.	English (in.)		Metric (mm)		Fits Hose I.D.	
					Min. Dia.	Max. Dia.	Min. Dia.	Max. Dia.	Min. (in.)	Max. (in.)
	<b>53</b>	<b>613</b> <sup>(1)</sup>	<b>65-E</b> <sup>(2)</sup>	<b>615</b>						
6	5306	613-006	6506E	615-006*	5/8	7/8	16	22	-	3/8
8	5308	613-008	6508E	615-008*	5/8	1	16	25	-	1/2
10	5310	613-010	6510E	615-010*	3/4	1 1/16	19	27	-	5/8
12	5312	613-012	6512E	615-012*	7/8	1 1/4	22	32	-	3/4
16	5316	613-016	6516E	615-016*	1	1 1/2	26	38	3/4	1
20	5320	613-020	6520E	615-020*	1 1/8	1 3/4	29	44	7/8	1 1/4
24	5324	613-024	6524E	615-024*	1 1/4	2	32	51	1	1 1/2
28	5328	613-028	6528E	615-028*	1 5/16	2 1/4	33	57	1 1/8	1 3/4
32	5332	613-032	6532E	615-032*	1 9/16	2 1/2	40	63	1 1/4	2
36	5336	613-036	6536E	615-036*	1 13/16	2 3/4	46	70	1 1/2	2 1/4
40	5340	613-040	6540E	615-040*	2 1/16	3	52	76	1 3/4	2 1/2
44	5344	613-044	6544E	615-044*	2 5/16	3 1/4	59	82	2 1/8	2 3/4
48	5348	613-048	6548E	615-048*	2 9/16	3 1/2	65	89	2 1/4	3
52	5352	613-052*	6552E	615-052*	2 13/16	3 3/4	72	95	2 1/2	3 1/4
56	5356	613-056*	6556E	615-056*	3 1/16	4	78	101	2 3/4	3 1/2
60	5360	613-060*	6560E	615-060*	3 5/16	4 1/4	84	108	3 1/8	3 3/4
64	5364	613-064*	6564E	615-064*	3 9/16	4 1/2	91	114	3 1/4	4
72	5372	613-072*	6572E	615-072*	4 1/16	5	103	127	3 3/4	4 1/2

<sup>(1)</sup> Tridon Automotive Series "ET"      <sup>(2)</sup> 65-E clamps have a 9/16" band      Additional sizes available - Contact Ideal for information  
\* Non-stocking item

## NON-PERFORATED BAND CLAMPS

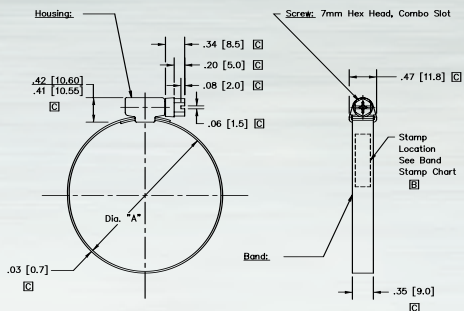
Preferred by the European original equipment and replacement markets, the non-perforated band protects silicone and other soft hose surfaces from extruding or shearing during installation. Available in 9mm and 12mm band widths in both part stainless (W2) and all stainless (W4) configurations.

### Ideal 53101 Series / Tridon 901 Series

Non-perforated clamp design

Screw: 7mm hex-head. Combination slot.  
Plated carbon steel.

Band and housing: 9mm design.  
300 grade stainless steel.

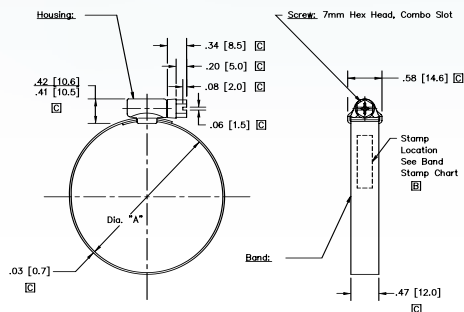


### Ideal 53102 Series / Tridon 902 Series

Non-perforated clamp design.

Screw: 7mm hex-head. Combination slot.  
Plated carbon steel.

Band and housing: 12mm design.  
300 grade stainless steel.

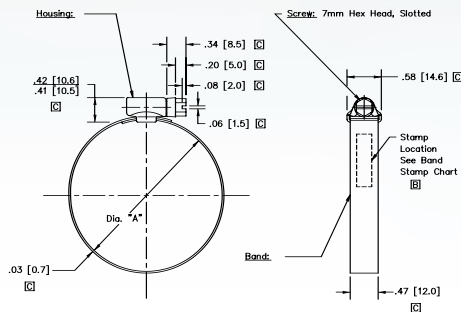


### Ideal 53104 Series / Tridon 904 Series

All 300 grade stainless steel, non-perforated clamp design.

Screw: 7mm hex-head. Slotted. 300 grade stainless steel.

Band and housing: 12mm design. 300 grade stainless steel.



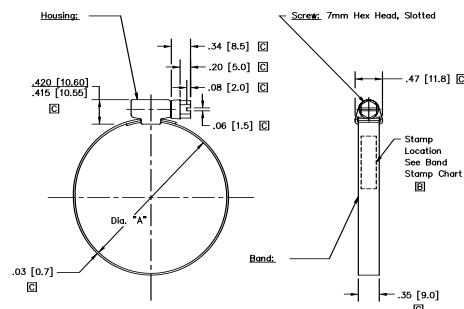
Measurements in illustrations are in inches [millimeters]

### Ideal 53103 Series / Tridon 903 Series

All 300 grade stainless steel, non-perforated clamp design.

Screw: 7mm hex-head. Slotted. 300 grade stainless steel.

Band and housing: 9mm design. 300 grade stainless steel.



Also Available In  
**316**  
STAINLESS STEEL



9mm BAND WIDTH NON-PERFORATED (EMBOSSSED) CLAMPS													
	Ideal Part No.	Tridon Part No.		Ideal Part No.	Tridon Part No.	Clamping Range				Fits Hose I.D.			
						mm		in.		mm		in.	
						Min. Dia.	Max. Dia.	Min. Dia.	Max. Dia.	Min. Dia.	Max. Dia.	Min. Dia.	Max. Dia.
	<b>53101</b>	<b>901</b>		<b>53103</b>	<b>903</b>								
<b>W2</b>	53101 0012	901-0012	<b>W4</b>	53103 0012	903-0012	8	12	5/16	15/32	-	5	1/8	3/16
	53101 0016	901-0016		53103 0016	903-0016	10	16	13/32	5/8	6	7	1/4	3/8
	53101 0020	901-0020		53103 0020	903-0020	12	20	1/2	25/32	7	10	5/16	1/2
	53101 0025	901-0025		53103 0025	903-0025	16	25	21/32	31/32	9	16	1/2	5/8
	53101 0032	901-0032		53103 0032	903-0032	20	32	25/32	1 1/4	13	22	5/8	7/8
	53101 0040	901-0040		53103 0040	903-0040	25	40	1	1 9/16	19	29	3/4	1
	53101 0050	901-0050		53103 0050	903-0050	32	50	1 1/4	1 31/32	25	38	1	1 3/8
	53101 0060	901-0060		53103 0060	903-0060	40	60	1 19/32	2 11/32	32	44	1 1/4	1 3/4
	53101 0070	901-0070		53103 0070	903-0070	50	70	1 31/32	2 3/4	41	57	1 5/8	2
	53101 0080	901-0080		53103 0080	903-0080	60	80	2 3/8	3 1/8	51	64	2	2 1/2
	53101 0090	901-0090		53103 0090	903-0090	70	90	2 3/4	3 1/2	64	76	2 1/2	3
	53101 0100	901-0100		53103 0100	903-0100	80	100	3 1/8	3 15/16	76	83	3	3 1/2
	53101 0110	901-0110		53103 0110	903-0110	90	110	3 9/16	4 5/16	83	89	3 1/4	3 3/4
	53101 0120	901-0120		53103 0120	903-0120	100	120	3 15/16	4 23/32	89	102	3 1/2	4
	53101 0130	901-0130		53103 0130	903-0130	110	130	4 5/16	5 1/8	102	114	4	4 1/2

12mm BAND WIDTH NON-PERFORATED (EMBOSSSED) CLAMPS													
	Ideal Part No.	Tridon Part No.		Ideal Part No.	Tridon Part No.	Clamping Range				Fits Hose I.D.			
						mm		in.		mm		in.	
						Min. Dia.	Max. Dia.	Min. Dia.	Max. Dia.	Min. Dia.	Max. Dia.	Min. Dia.	Max. Dia.
	<b>53102</b>	<b>902</b>		<b>53104</b>	<b>904</b>								
<b>W2</b>	53102 0025	902-0025	<b>W4</b>	53104 0025	904-0025	16	25	21/32	31/32	9	16	1/2	5/8
	53102 0032	902-0032		53104 0032	904-0032	20	32	25/32	1 1/4	13	22	5/8	7/8
	53102 0040	902-0040		53104 0040	904-0040	25	40	1	1 9/16	19	29	3/4	1
	53102 0050	902-0050		53104 0050	904-0050	32	50	1 1/4	1 31/32	25	38	1	1 3/8
	53102 0060	902-0060		53104 0060	904-0060	40	60	1 19/32	2 11/32	32	44	1 1/4	1 3/4
	53102 0070	902-0070		53104 0070	904-0070	50	70	1 31/32	2 3/4	41	57	1 5/8	2
	53102 0080	902-0080		53104 0080	904-0080	60	80	2 3/8	3 1/8	51	64	2	2 1/2
	53102 0090	902-0090		53104 0090	904-0090	70	90	2 3/4	3 1/2	64	76	2 1/2	3
	53102 0100	902-0100		53104 0100	904-0100	80	100	3 1/8	3 15/16	76	83	3	3 1/2
	53102 0110	902-0110		53104 0110	904-0110	90	110	3 9/16	4 5/16	83	89	3 1/4	3 3/4
	53102 0120	902-0120		53104 0120	904-0120	100	120	3 15/16	4 23/32	89	102	3 1/2	4
	53102 0130	902-0130		53104 0130	904-0130	110	130	4 5/16	5 1/8	102	114	4	4 1/2

# HEAVY-DUTY

We offer one of the most comprehensive lines of heavy-duty clamping products in the business. Our heavy-duty products include T-Bolts, Spring Loaded T-Bolts, V-Bands, Heavy-Duty and Constant Tension worm drive clamps. We cover the world of heavy-duty truck, off-road and industrial applications. We can even custom engineer a product that will meet your special fastening requirements.

## T-BOLTS

Heavy-duty T-Bolt clamps provide uniform sealing pressure for a positive, reliable seal. Specifically designed for use in the high vibration and large diameter applications common in heavy truck, off-road equipment and industrial machinery, our T-Bolts feature a 3/4" wide stainless steel band and welded construction for reliability. They are available in part or all stainless steel construction and in Standard T-Bolt, Channel Bridge T-Bolt and Spring Loaded T-Bolt designs.

### Standard T-Bolts – Ideal 30010 Series/Tridon 813 Series

The most widely used T-Bolt clamp design. Typical applications include truck air intake systems, cold side charge air systems, off-road equipment and industrial machinery.

Band/Liner: 3/4" width, 201/301 stainless steel.

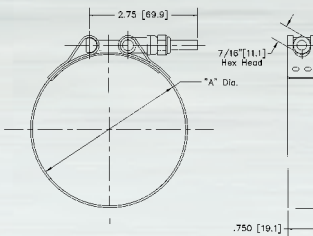
Bolt: 1/4"-28, plated steel.

Nut: 7/16" hex, nylon insert, plated steel locknut.

Trunnion: Plated steel.

Covers clamping ranges from 1 3/8" to 8 1/2".

*Additional clamping ranges and designs are available on request – Contact Ideal for information.*



### Channel Bridge T-Bolts – Ideal 30020 Series/Tridon 814 Series

Channel bridge T-Bolts provide the added insurance of a rigid bridge liner to help prevent leak paths in more demanding applications. Typical applications include truck air intake systems, cold side charge air systems and industrial equipment and machinery.

Band/Bridge: 3/4" width, 201/301 stainless steel.

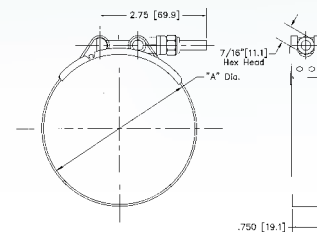
Bolt: 1/4"-28 plated steel.

Nut: 7/16" hex, nylon insert, plated steel locknut.

Trunnion: Plated steel.

Covers clamping ranges from 1 3/8" to 8 1/2".

*Additional clamping ranges and designs are available on request – Contact Ideal for information.*



### Spring Loaded T-Bolts – Ideal 30030 Series/Tridon 819 Series

The helical spring design provides the self-compensating (constant tension) feature that prevents the development of leak paths due to temperature fluctuations. Typical applications include heavy truck charge air and cooling systems.

Band/Bridge: 3/4" width, 201/301 stainless steel.

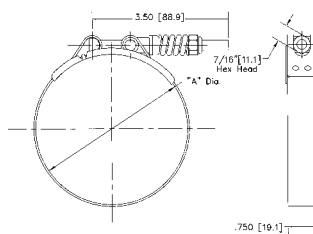
Bolt: 1/4"-28 plated steel. Spring: Plated steel.

Nut: 7/16" hex, nylon insert, plated steel locknut.

Trunnion: Plated steel.

Covers clamping ranges from 3 1/16" to 4 9/16".

*Additional clamping ranges and designs are available on request – Contact Ideal for information.*



## STANDARD AND CHANNEL BRIDGE T-BOLTS

SAE Sizes	Standard T-Bolt		Channel Bridge T-Bolt		Min. Dia. (Inches)	Max. Dia. (Inches)	Min. Dia. (mm)	Max. Dia. (mm)	Installation Torque
	Ideal Part No.	Tridon Part No.	Ideal Part No.	Tridon Part No.					
–	30010 0138	813-138	30020 0138	814-138	1 3/8	1 9/16	35.1	38.6	75.0 in. lbs. (8.5 Nm)
–	30010 0150	813-150	30020 0150	814-150	1 1/2	1 5/8	38.1	41.7	75.0 in. lbs. (8.5 Nm)
–	30010 0163	813-163	30020 0163	814-163	1 5/8	1 7/8	41.4	46.0	75.0 in. lbs. (8.5 Nm)
28	30010 0175	813-175	30020 0175	814-175	1 3/4	2	44.5	50.8	75.0 in. lbs. (8.5 Nm)
32	30010 0188	813-188	30020 0188	814-188	1 7/8	2 3/16	47.8	55.6	75.0 in. lbs. (8.5 Nm)
36	30010 0200	813-200	30020 0200	814-200	2	2 5/16	50.8	58.7	75.0 in. lbs. (8.5 Nm)
40	30010 0213	813-213	30020 0213	814-213	2 1/8	2 7/16	54.1	62.0	75.0 in. lbs. (8.5 Nm)
44	30010 0225	813-225	30020 0225	814-225	2 1/4	2 9/16	57.2	65.0	75.0 in. lbs. (8.5 Nm)
48	30010 0238	813-238	30020 0238	814-238	2 3/8	2 11/16	60.5	68.3	75.0 in. lbs. (8.5 Nm)
52	30010 0250	813-250	30020 0250	814-250	2 1/2	2 13/16	63.5	71.4	75.0 in. lbs. (8.5 Nm)
56	30010 0263	813-263	30020 0263	814-263	2 5/8	2 15/16	66.8	74.7	75.0 in. lbs. (8.5 Nm)
60	30010 0275	813-275	30020 0275	814-275	2 3/4	3 1/16	69.9	77.7	75.0 in. lbs. (8.5 Nm)
64	30010 0288	813-288	30020 0288	814-288	2 7/8	3 3/16	73.2	81.0	75.0 in. lbs. (8.5 Nm)
68	30010 0300	813-300	30020 0300	814-300	3	3 5/16	76.2	84.1	75.0 in. lbs. (8.5 Nm)
72	30010 0313	813-313	30020 0313	814-313	3 1/8	3 7/16	79.5	87.4	75.0 in. lbs. (8.5 Nm)
76	30010 0325	813-325	30020 0325	814-325	3 1/4	3 9/16	82.6	90.4	75.0 in. lbs. (8.5 Nm)
80	30010 0338	813-338	30020 0338	814-338	3 3/8	3 11/16	85.9	93.7	75.0 in. lbs. (8.5 Nm)
84	30010 0350	813-350	30020 0350	814-350	3 1/2	3 13/16	88.9	96.8	75.0 in. lbs. (8.5 Nm)
88	30010 0363	813-363	30020 0363	814-363	3 5/8	3 15/16	92.2	100.1	75.0 in. lbs. (8.5 Nm)
92	30010 0375	813-375	30020 0375	814-375	3 3/4	4 1/16	95.3	103.1	75.0 in. lbs. (8.5 Nm)
100	30010 0400	813-400	30020 0400	814-400	4	4 5/16	101.6	109.5	75.0 in. lbs. (8.5 Nm)
108	30010 0425	813-425	30020 0425	814-425	4 1/4	4 9/16	108.0	115.8	75.0 in. lbs. (8.5 Nm)
116	30010 0450	813-450	30020 0450	814-450	4 1/2	4 13/16	114.3	122.2	75.0 in. lbs. (8.5 Nm)
124	30010 0475	813-475	30020 0475	814-475	4 3/4	5 1/16	120.7	128.5	75.0 in. lbs. (8.5 Nm)
132	30010 0500	813-500	30020 0500	814-500	5	5 5/16	127.0	134.9	75.0 in. lbs. (8.5 Nm)
140	30010 0525	813-525	30020 0525	814-525	5 1/4	5 9/16	133.4	141.2	75.0 in. lbs. (8.5 Nm)
148	30010 0550	813-550	30020 0550	814-550	5 1/2	5 13/16	139.7	147.6	75.0 in. lbs. (8.5 Nm)
156	30010 0575	813-575	30020 0575	814-575	5 3/4	6 1/16	146.1	153.9	75.0 in. lbs. (8.5 Nm)
164	30010 0600	813-600	30020 0600	814-600	6	6 5/16	152.4	160.3	75.0 in. lbs. (8.5 Nm)
172	30010 0625	813-625	30020 0625	814-625	6 1/4	6 9/16	158.8	166.6	75.0 in. lbs. (8.5 Nm)
180	30010 0650	813-650	30020 0650	814-650	6 1/2	6 13/16	165.1	173.0	75.0 in. lbs. (8.5 Nm)
188	30010 0675	813-675	30020 0675	814-675	6 3/4	7 1/16	171.5	179.3	75.0 in. lbs. (8.5 Nm)
196	30010 0700	813-700	30020 0700	814-700	7	7 5/16	177.8	185.7	75.0 in. lbs. (8.5 Nm)
204	30010 0725	813-725	30020 0725	814-725	7 1/4	7 9/16	184.2	192.0	75.0 in. lbs. (8.5 Nm)
212	30010 0750	813-750	30020 0750	814-750	7 1/2	7 13/16	190.5	198.4	75.0 in. lbs. (8.5 Nm)
220	30010 0775	813-775	30020 0775	814-775	7 3/4	8 1/16	196.9	204.7	75.0 in. lbs. (8.5 Nm)
228	30010 0800	813-800	30020 0800	814-800	8	8 5/16	203.2	211.1	75.0 in. lbs. (8.5 Nm)
236	30010 0825	813-825	30020 0825	814-825	8 1/4	8 9/16	209.6	217.4	75.0 in. lbs. (8.5 Nm)
244	30010 0850	813-850	30020 0850	814-850	8 1/2	8 13/16	215.9	223.8	75.0 in. lbs. (8.5 Nm)

Additional sizes and designs available – Contact Ideal for information.

## SPRING LOADED T-BOLTS

SAE Sizes	Spring Loaded T-Bolt		Min. Dia. (Inches)	Max. Dia. (Inches)	Min. Dia. (mm)	Max. Dia. (mm)	Installation Torque
	Ideal Part No.	Tridon Part No.					
70	30030 0306	819-306	3 1/16	3 3/8	77.8	85.7	75.0 in. lbs. (8.5 Nm)
86	30030 0356	819-356	3 9/16	3 7/8	90.5	98.4	75.0 in. lbs. (8.5 Nm)
102	30030 0406	819-406	4 1/16	4 3/8	103.2	111.1	75.0 in. lbs. (8.5 Nm)
118	30030 0456	819-456	4 9/16	4 7/8	115.9	123.8	75.0 in. lbs. (8.5 Nm)

Additional sizes and designs available – Contact Ideal for information.



## V-BANDS

V-Bands provide a secure, reliable connection for virtually any flanged joint. Typical applications include filter housings, turbocharger systems, exhaust systems and industrial applications where a flanged connection is required.

V-Bands are available in a wide range of band and v-insert configurations. Contact Ideal with your special requirements.

## HIGH PERFORMANCE WORM DRIVE CLAMPS



Premium POW'R-GEAR® and TRIMAX® clamps are designed for high vibration and stubborn leakage applications such as industrial machinery, heavy truck, farm and off-road equipment engines.

Featuring an extra wide 5/8" band and a wide profile housing that provides maximum engagement of screw threads to band, POW'R-GEAR® and TRIMAX® clamps are engineered to deliver exceptionally high rates of band tension to handle even the toughest sealing jobs.

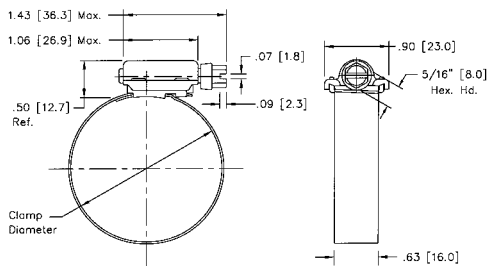
### Ideal POW'R-GEAR® 60 Series/Tridon TRIMAX® 850 Series

The premier clamp in the industry.

Screw: 5/16" hex-head. 410 stainless steel.  
 Band: 5/8" design. 0.028" thick. 300 grade stainless steel.  
 Housing: 0.060" thick. 300 grade stainless steel.

### Ideal 300 Grade Stainless Steel POW'R-GEAR® 6P Series (Tridon N/A)

All 300 grade stainless steel construction.  
 Screw: 5/16" hex-head. 305 stainless steel.  
 Band: 5/8" design. 0.028" thick. 300 grade stainless steel.  
 Housing: 0.060" thick. 300 grade stainless steel.



Measurements in illustrations are in inches (millimeters)

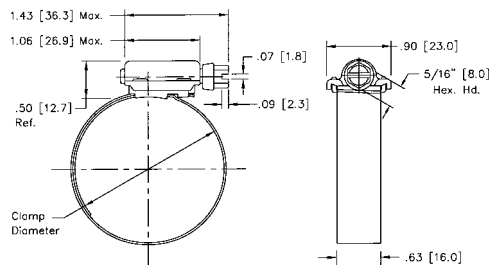
### Ideal Lined POW'R-GEAR® 6L Series Tridon TRIMAX® 843 Series

For maximum protection of soft hoses. Protective liner prevents extrusion and shearing of hose through band notches. Extended band design prevents liner from skewing during installation.

Screw: 5/16" hex-head. 410 stainless steel.  
 Band Liner: 5/8" design. 0.028" thick. 300 grade stainless steel.  
 Housing: 0.060" thick. 300 grade stainless steel.

### Ideal 300 Grade Stainless Steel Lined POW'R-GEAR® 6M Series (Tridon N/A)

All 300 grade stainless steel construction.  
 Screw: 5/16" hex-head. 305 stainless steel.  
 Band Liner: 5/8" design. 0.028" thick. 300 grade stainless steel.  
 Housing: 0.060" thick. 300 grade stainless steel.



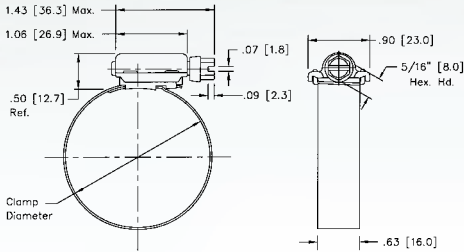
N/A - Not Available



## Ideal Extended Range POW'R-GEAR® 6X Series (Tridon N/A)

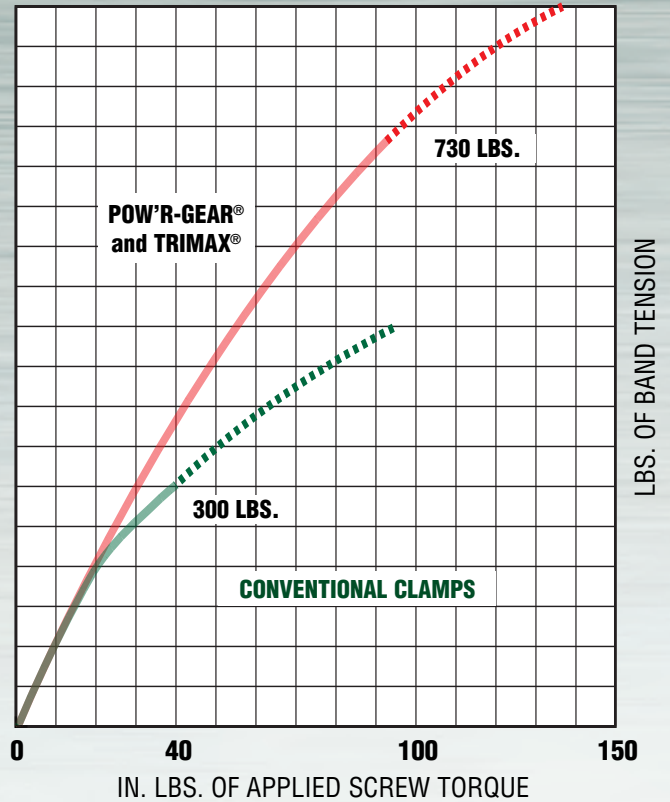
Extra band notches allow greater opened and closed working diameters. Only five sizes cover clamping diameters from 1-1/4" to 10-1/8". Minimizes inventory investment without compromising application coverage.

Screw: 5/16" hex-head. 410 stainless steel.  
Band: 5/8" design. 0.028" thick. 300 grade stainless steel.  
Housing: 0.060". thick. 300 grade stainless steel.



Measurements in illustrations are in inches [millimeters]

Also Available In  
**316**  
STAINLESS STEEL



*POW'R-GEAR® and TRIMAX® clamps deliver over 800 lbs. of band tension at 150 in. lbs. of screw torque. That's more than twice the band tension of conventional clamps.*

SAE Sizes	Ideal Part No.	English (in.)		Metric (mm)		Fits Hose I.D.	
		Min. Dia.	Max. Dia.	Min. Dia.	Max. Dia.	Min. (in.)	Max. (in.)
<b>6X</b>							
262	6X200	1 1/4	2 5/8	32	66	1 1/4	2
412	6X300	2	4 1/8	51	104	2	3 1/2
612	6X400	4	6 1/8	102	155	4	5 1/2
912	6X500	6	9 1/8	153	231	6	8 1/2
1012	6X600	7	10 1/8	178	257	7	9 1/2

SAE Sizes	Ideal Part No.	Tridon Part No.	HIGH PERFORMANCE CLAMP						CLAMPING RANGE						
			Ideal Part No.	Tridon Part No.	Ideal Part No.	Tridon Part No.	Ideal Part No.	Tridon Part No.	English (in.)		Metric (mm)		Fits Hose I.D.		
									Min. Dia.	Max. Dia.	Min. Dia.	Max. Dia.	Min. (in.)	Max. (in.)	
	<b>60</b>	<b>850</b>	<b>6P</b>	<b>N/A</b>	<b>6L</b>	<b>843</b>	<b>6M</b>	<b>N/A</b>							
175	60175	850-175	6P175	-	6L175	843-175	6M175	-	1	1 3/4	25	45	7/8	1 1/8	
212	60200	850-200	6P200	-	6L200	843-200	6M200	-	1 1/4	2 1/8	32	54	1	1 1/2	
262	60250	850-250	6P250	-	6L250	843-250	6M250	-	1 3/4	2 5/8	45	66	1 1/2	2	
312	60300	850-300	6P300	-	6L300	843-300	6M300	-	2 1/4	3 1/8	57	79	2	2 1/2	
362	60350	850-350	6P350	-	6L350	843-350	6M350	-	2 3/4	3 5/8	70	92	2 1/2	3	
412	60400	850-400	6P400	-	6L400	843-400	6M400	-	3 1/4	4 1/8	83	105	3	3 1/2	
462	60450	850-450	6P450	-	6L450	843-450	6M450	-	3 3/4	4 5/8	95	117	3 1/2	4	
512	60500	850-500	6P500	-	6L500	843-500	6M500	-	4 1/4	5 1/8	108	130	4	4 1/2	
562	60550	850-550	6P550	-	6L550	843-550	6M550	-	4 3/4	5 5/8	121	143	4 1/2	5	
612	60600	850-600	6P600	-	6L600	843-600	6M600	-	5 1/4	6 1/8	133	155	5	5 1/2	
662	60650	850-650	6P650	-	6L650	843-650	6M650	-	5 3/4	6 5/8	146	168	5 1/2	6	
712	60700	850-700	6P700	-	6L700	843-700	6M700	-	6 1/4	7 1/8	159	181	6	6 1/2	
762	60750	850-750	6P750	-	6L750	843-750	6M750	-	6 3/4	7 5/8	172	193	6 1/2	7	
812	60800	850-800	6P800	-	6L800	843-800	6M800	-	7 1/4	8 1/8	184	206	7	7 1/2	
862	60850	850-850	6P850	-	6L850	843-850	6M850	-	7 3/4	8 5/8	197	219	7 1/2	8	
912	60900	850-900	6P900	-	6L900	843-900	6M900	-	8 1/4	9 1/8	210	232	8	8 1/2	

Additional sizes available - Contact Ideal for information

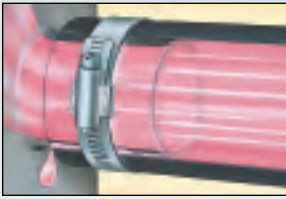
# HEAVY-DUTY CONSTANT TENSION

## FLEX-GEAR® CLAMPS

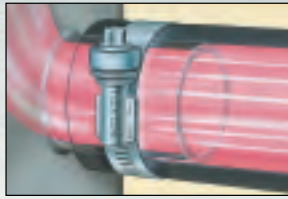
To eliminate “cold flow” leakage, you have to shut off the leak paths. Flex-Gear® heavy-duty constant tension clamps provide the self-adjusting band you need for a dependable seal, even in the coldest conditions.

### Key features:

- Larger, heavier-gauge, precision-formed spring washers provide higher rates of band tension and adjustment for a more dependable seal
- Inner liner protects against shearing of hose surfaces
- Provides a uniform 360° seal
- Reusable



Non-compensating clamp cannot adjust during extreme temperature changes, allowing leaks to occur



Flex-Gear adjusts with the hose and fitting to maintain constant tension on the connection, eliminating leak paths

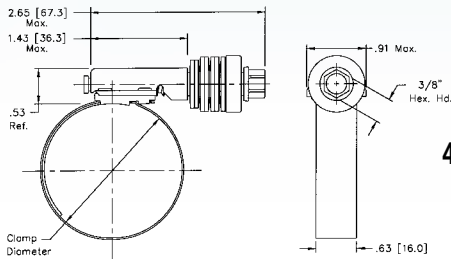


### Ideal Flex-Gear HD® 41 Series (Tridon N/A)

Screw: 3/8" hex-head. Carbon plated steel.  
Band, liner and housing: 5/8" design. 300 grade stainless steel.  
Washers: 300 grade stainless steel.

### Ideal Flex-Gear HD® 45 Series (Tridon N/A)

Screw: 3/8" hex-head. 410 stainless steel.  
Band, liner and housing: 5/8" design. 300 grade stainless steel.  
Washers: 300 grade stainless steel.



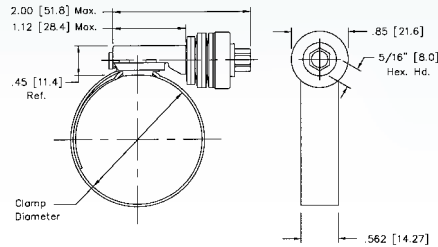
41 & 45 Series

### Ideal Flex-Gear® 43 Series (Tridon N/A)

Screw: 5/16" hex-head. Carbon plated steel.  
Band, liner and housing: 9/16" design. 300 grade stainless steel.  
Washers: 300 grade stainless steel.

### Ideal Flex-Gear® 47 Series (Tridon N/A)

Screw: 5/16" hex-head. 410 stainless steel.  
Band, liner and housing: 9/16" design. 300 grade stainless steel.  
Washers: 300 grade stainless steel.



43 & 47 Series

Measurements in illustrations are in inches [millimeters]

FLEX-GEAR HD		CLAMPING RANGE						
SAE Sizes	Ideal Part No.	Ideal Part No.	English (in.)		Metric (mm)		Fits Hose I.D.	
			Min. Dia.	Max. Dia.	Min. Dia.	Max. Dia.	Min. (in.)	Max. (in.)
	<b>41</b>	<b>45</b>						
175	41175	45175	1	1 3/4	25	45	7/8	1 1/8
212	41200	45200	1 1/4	2 1/8	32	54	1	1 1/2
262	41250	45250	1 3/4	2 5/8	45	67	1 1/2	2
312	41300	45300	2 1/4	3 1/8	57	79	2	2 1/2
362	41350	45350	2 3/4	3 5/8	70	92	2 1/2	3
412	41400	45400	3 1/4	4 1/8	83	105	3	3 1/2
462	41450	45450	3 3/4	4 5/8	95	117	3 1/2	4
512	41500	45500	4 1/4	5 1/8	108	130	4	4 1/2
562	41550	45550	4 3/4	5 5/8	121	143	4 1/2	5
612	41600	45600	5 1/4	6 1/8	133	155	5	5 1/2
662	41650	45650	5 3/4	6 5/8	146	168	5 1/2	6
712	41700	45700	6 1/4	7 1/8	159	181	6	6 1/2
762	41750	45750	6 3/4	7 5/8	172	193	6 1/2	7
812	41800	45800	7 1/4	8 1/8	184	206	7	7 1/2
862	41850	45850	7 3/4	8 5/8	197	219	7 1/2	8
912	41900	45900	8 1/4	9 1/8	210	232	8	8 1/2

FLEX-GEAR		CLAMPING RANGE						
SAE Sizes	Ideal Part No.	Ideal Part No.	English (in.)		Metric (mm)		Fits Hose I.D.	
			Min. Dia.	Max. Dia.	Min. Dia.	Max. Dia.	Min. (in.)	Max. (in.)
	<b>43</b>	<b>47</b>						
10	43010	47010	9/16	1 1/16	14	27	3/8	5/8
12	43012	47012	5/8	1 1/4	16	32	3/8	3/4
16	43016	47016	13/16	1 1/2	21	38	3/4	7/8
20	43020	47020	13/16	1 3/4	20	44	3/4	1 1/8
24	43024	47024	1 1/16	2	27	51	7/8	1 3/8
28	43028	47028	1 5/16	2 1/4	33	57	1 1/4	1 5/8
32	43032	47032	1 9/16	2 1/2	40	63	1 1/2	1 7/8
36	43036	47036	1 13/16	2 3/4	46	70	1 3/4	2
40	43040	47040	2 1/16	3	52	76	2	2 1/4
44	43044	47044	2 5/16	3 1/4	59	82	2 1/4	2 1/2
48	43048	47048	2 9/16	3 1/2	65	89	2 1/2	3

Additional sizes available upon request.

## THERMAL FLEX™ AND MICRO FLEX™

The captured helical spring design provides a continuous load to compensate for hose compression and thermal dimensional changes (cold flow).

### Tridon Thermal Flex 820 Series (Ideal N/A)

Screw: 5/16" hex-head, non-slotted.  
300 grade stainless steel.

Band, housing and spring: 1/2" design.  
300 grade stainless steel.

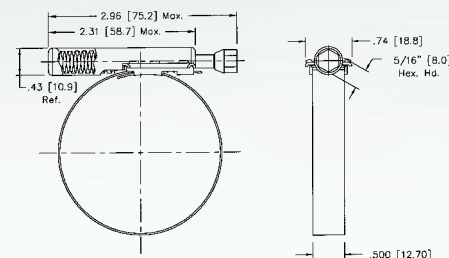
### Tridon Thermal Flex Lined 825 Series (Ideal N/A)

Screw: 5/16" hex-head, non-slotted.  
300 grade stainless steel.

Band, housing, liner and spring: 1/2" design.  
300 grade stainless steel.



THERMAL FLEX						
SAE Sizes	Tridon Part No.		Clamping Range			
			Inches		Millimeters	
	No Liner	Liner	Min.	Max.	Min.	Max.
175	820-175	825-175	1	1 3/4	25	45
212	820-200	825-200	1 1/4	2 1/8	32	54
262	820-250	825-250	1 3/4	2 5/8	45	66
312	820-300	825-300	2 1/4	3 1/8	57	79
362	820-350	825-350	2 3/4	3 5/8	70	92
412	820-400	825-400	3 1/4	4 1/8	83	105
462	820-450	825-450	3 3/4	4 5/8	95	117
512	820-500	825-500	4 1/4	5 1/8	108	130
562	820-550	825-550	4 3/4	5 5/8	121	143
612	820-600	528-600	5 1/4	6 1/8	133	155
662	820-650	825-650	5 3/4	6 5/8	146	168
712	820-700	825-700	6 1/4	7 1/8	159	181
762	820-750	825-750	6 3/4	7 5/8	172	193
812	820-800	825-800	7 1/4	8 1/8	184	206
862	820-850	825-850	7 3/4	8 5/8	197	219
912	820-900	825-900	8 1/4	9 1/8	210	232



Measurements in illustrations are in inches [millimeters]



### Tridon Micro Flex 391 Series (Ideal N/A)

Screw: 1/4" hex-head, slotted. 410 stainless steel.  
Band, housing and liner: 300 grade stainless steel.

MICRO FLEX					
SAE Sizes	Tridon Part No.	Clamping Range			
		Inches		Millimeters	
		Min.	Max.	Min.	Max.
4	391-004	1/4	5/8	6.3	15.7
5	391-005	7/16	11/16	11.2	17.5
6	391-006	7/16	25/32	12.2	19.8
8	391-008	1/2	29/32	15.5	23.1
10	391-010	9/16	1 1/16	14.2	26.9
12	391-012	11/16	1 1/4	17.5	31.7

# CONSTANT TENSION

## SPRING BAND CLAMPS

Engineered for automotive original equipment applications, the heat treated steel construction and spring design compensate for compression set or thermal cycling. Spring bands can be pre-installed on the hose as a sub-assembly.

### Tridon Clipless Spring Band (Ideal N/A)

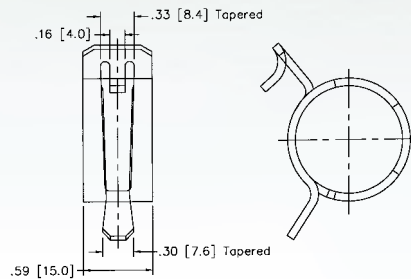
The clipless style is delivered in the full open position for release with a common screwdriver.

### Tridon Stop Tab Spring Band (Ideal N/A)

The stop tab design is delivered in the closed position for installation with a spring band installation tool.

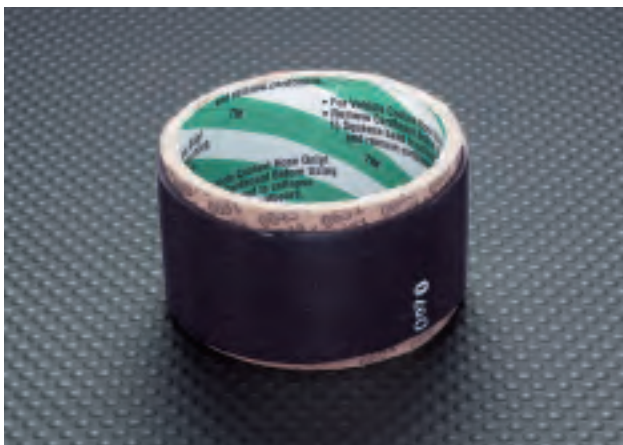


SPRING BAND CLAMPS					
Clipless Tridon Part No.			Stop Tab Tridon Part No.		
SAE Sizes	15mm width	20mm width	SAE Sizes	15mm width	12mm width
15	-	-	15	936150	-
17	958170	-	17	936170	926170
20	958200	-	20	933200	-
23	-	-	23	-	923230
24	958240	-	24	936240	926240
27	958270	-	27	936270	923270
34	958340	-	34	-	-
35	958350	-	35	933350	-
40	-	-	40	936400	926270
42	958420	988420	42	-	-
46	958460	-	46	-	-
47	-	-	47	933470	-
48	958480	-	48	933480	-
49	958540	988490	49	-	-
54	-	988540	54	-	-
55	-	988550	55	936550	-
56	-	988560	56	-	-
61	-	988610	61	-	-



## POWERGRIP™ SB 46 SERIES

Ideal Shrink Band clamps are made of a heat-sensitive thermoplastic with a memory that prevents them from over-tightening or under-tightening. Shrinks on with a heat gun. They are environmentally friendly, virtually eliminating antifreeze leaks and groundwater contamination. (Tridon N/A).



Description	POWERGRIP CLAMPING RANGE			
	Ideal Part No.	Nominal Hose ID (in.)	English (in.)	
			Min. (in.)	Max. (in.)
SB15	46015	1/4	1/2	11/16
SB19	46019	3/8	11/16	13/16
SB22	46022	1/2	13/16	15/16
SB25	46025	5/8	15/16	1 1/16
SB29	46029	3/4	1 1/16	1 3/16
SB34	46034	1	1 3/16	1 1/2
SB41	46041	1 1/4	1 1/2	1 3/4
SB48	46048	1 1/2	1 3/4	2
SB54	46054	1 3/4	2	2 1/4
SB60	46060	2	2 1/4	2 1/2
SB67	46067	2 1/4	2 1/2	2 3/4
SB73	46073	2 1/2	2 3/4	3
SB79	46079	2 3/4	3	3 1/4
SB86	46086	3	3 1/4	3 1/2
SB90	46090	3 1/8	3 1/2	3 5/8



## TURN-KEY CLAMPS

The IDEAL Turn-Key™ Hose Clamp installs with a simple hand twist, no tools required. It's easy to remove and replace. Just pull off the key for a tamper-resistant connection. Turn-Key clamps come in a variety of sizes to fit automotive heater and radiator hoses, garden hoses, R.V. sewer hoses and dryer vent hoses. Available with yellow, red or blue keys.



### Features and Construction

Turn-Key: Injection molded thermoplastic in yellow, red or blue.  
 Band and Housing: Stainless steel.  
 Screw: Plated carbon steel.  
 Band Width: 1/2", micros 5/16".

### Size and Applications

#### Automotive Hose Clamps

Heater — SAE sizes #12 or #20  
 Radiator — SAE sizes #28 or #36

#### Garden Hose Clamp

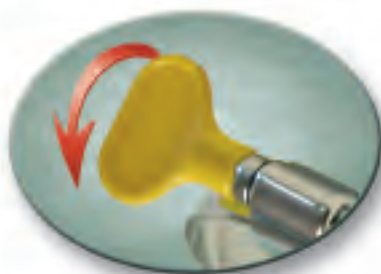
SAE size #12

#### R.V. Sewer Hose Clamp

SAE size #48

#### Dryer Vent Hose Clamp

SAE size #64



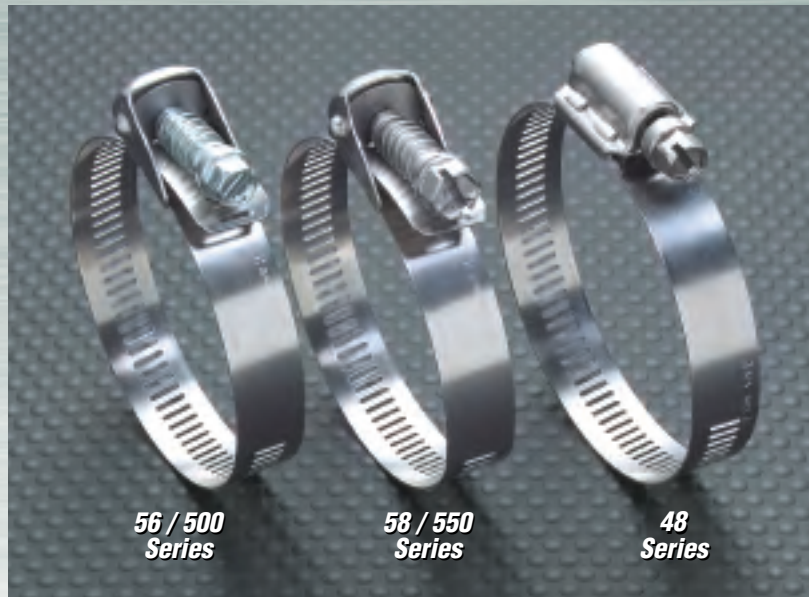
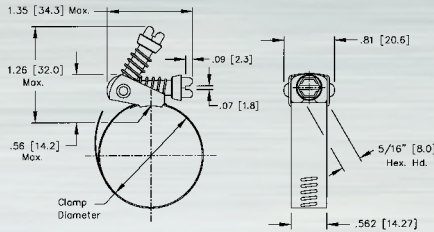
TURN-KEY VISI-PAKS			
Part No.	SAE Size	Color	Qty.
6Y004v	Micros 4 and 6	Yellow	4 pk.
6R004v	Micros 4 and 6	Red	4 pk.
6B004v	Micros 4 and 6	Blue	4 pk.
5Y012v	12	Yellow	2 pk.
5R012v	12	Red	2 pk.
5B012v	12	Blue	2 pk.
5Y020v	20	Yellow	2 pk.
5R020v	20	Red	2 pk.
5B020v	20	Blue	2 pk.
5Y028v	28	Yellow	2 pk.
5R028v	28	Red	2 pk.
5B028v	28	Blue	2 pk.
5Y036v	36	Yellow	2 pk.
5R036v	36	Red	2 pk.
5B036v	36	Blue	2 pk.
5Y048v	48	Yellow	2 pk.
5Y064v	64	Yellow	2 pk.
5Y001v	4,6,12,20,28,36	Yellow	6 pk.
5R001v	4,6,12,20,28,36	Red	6 pk.
5B001v	4,6,12,20,28,36	Blue	6 pk.

## QUICK RELEASE CLAMPS

Quick release style worm drive clamps are indispensable for installation in closed systems where the clamp must be disengaged to be applied. The swivel-action locking of screw to band makes both installation and removal fast and easy.

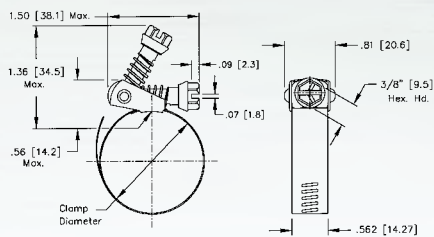
### Ideal Snaplock® 56 Series (Tridon N/A)

Screw: 5/16" hex-head. Plated carbon steel.  
Band and housing: 9/16" design.  
201/301 stainless steel.



### Ideal Snaplock® 58 Series (Tridon N/A)

Screw: 3/8" hex-head. 410 stainless steel.  
Band and housing: 9/16" design.  
201/301 stainless steel.



### Tridon 500 Series (Ideal N/A)

Screw: 5/16" hex-head. Plated carbon steel.  
Band and housing: 1/2" design.  
201/301 stainless steel.

### Tridon 550 Series (Ideal N/A)

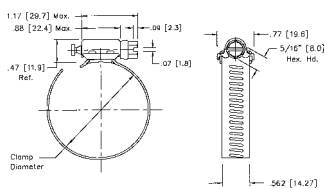
Screw: 5/16" hex-head. 410 stainless steel.  
Band and housing: 1/2" design.  
201/301 stainless steel.

## SURELOCK QUICK ENGAGEMENT CLAMPS

Surelock's bind-free pull-through design makes installation quick and easy. Captured screw design makes engagement and final tensioning trouble-free. Extended housing embraces 25% more screw threads than competitive designs.

### Ideal Surelock 48 Series (Tridon N/A)

Screw: 5/16" hex-head. 300 grade stainless steel.  
Band and housing: 9/16" design. 300 grade stainless steel.



Measurements in illustrations are in inches [millimeters]

Also Available In  
**316**  
STAINLESS STEEL

SNAPLOCK/QUICK RELEASE					CLAMPING RANGE					
SAE Sizes	Ideal Part No.	Tridon Part No.	Ideal Part No.	Tridon Part No.	English (in.)		Metric (mm)		Fits Hose I.D.	
					Min.Dia.	Max.Dia.	Min.Dia.	Max.Dia.	Min.(in.)	Max.(in.)
	<b>56</b>	<b>500</b>	<b>58</b>	<b>550</b>						
012	5612	500-012*	5812	550-012*	1/2	1 1/4	13	32	3/8	3/4
020	5620	500-020*	5820	550-020*	3/4	1 3/4	19	44	3/4	1 1/8
024	5624	500-024*	5824	550-024*	1	2	26	51	7/8	1 3/8
028	5628	500-028*	5828	550-028*	1	2 1/4	26	57	7/8	1 5/8
036	5636	500-036*	5836	550-036*	1	2 3/4	26	70	7/8	2
048	5648	500-048*	5848	550-048*	1 1/2	3 1/2	38	89	1 1/2	2 3/4
056	5656	500-056	5856	550-056	1	4	26	101	7/8	3 1/2
072	5672	500-072	5872	550-072	2	5	51	127	2	4 1/2
088	5688	500-088	5888	550-088	2	6	51	152	2	5 1/2
104	56104	500-104	58104	550-104	1 3/4	7	45	178	1 3/4	6 1/2
116	56116	500-116*	58116	550-116*	1 3/4	7 3/4	45	197	1 3/4	7
128	56128	500-128	58128	550-128	2 1/4	8 1/2	45	216	1 3/4	7 1/2
136	56136	500-136*	58136	550-136	1 3/4	9	45	228	1 3/4	8 1/2
152	56152	500-152	58152	550-152	2	10	51	254	2	9 1/2
188	56188	500-188	58188	550-188	2	12 1/4	51	311	2	11 1/2

\* Non-stocking item

Additional sizes available - Contact Ideal for information.

Clamps are shipped disengaged. Information on special sizes available on request.

SURELOCK		CLAMPING RANGE					
SAE Sizes	Ideal Part No.	English (in.)		Metric (mm)		Fits Hose I.D.	
		Min. Dia.	Max. Dia.	Min. Dia.	Max. Dia.	Min.(in.)	Max.(in.)
	<b>48</b>						
12	48012	1/2	1 1/4	13	32	3/8	3/4
20	48020	3/4	1 3/4	19	44	3/4	1 1/8
24	48024	3/4	2	19	51	3/4	1 3/8
28	48028	1	2 1/4	26	57	7/8	1 5/8
32	48032	1	2 1/2	26	63	7/8	1 7/8
36	48036	7/8	2 3/4	22	70	3/4	2
48	48048	1	3 1/2	26	89	1	2 3/4
56	48056	1	4	26	101	1	3 1/2
72	48072	2	5	51	127	2	4 1/2
80	48080	2 9/16	5 1/2	65	140	2 1/2	5
88	48088	2	6	51	152	2	5 1/2
104	48104	2	7	51	178	2	6 1/2
116	48116	1 3/4	7 3/4	44	197	1 3/4	7
128	48128	4 1/4	8 1/2	108	216	4 1/4	8
152	48152	4	10	102	254	4	9 1/2
180	48180	7 3/4	11 3/4	197	298	7 1/2	11
188	48188	6 1/4	12 1/4	159	311	6	11 1/2

Additional sizes available - Contact Ideal for information

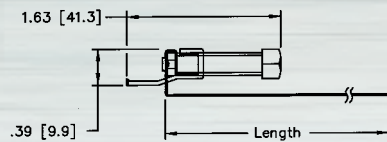
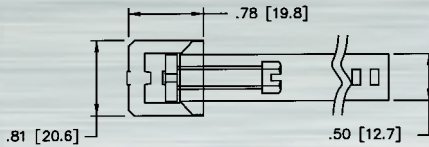
**LOX-ON**

**Ideal 69 Series (Tridon N/A)**

For extra-tough installations. Unique design provides double-locking security and high band tension for high sealing pressures.

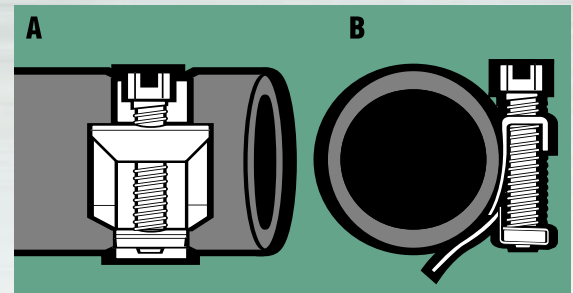
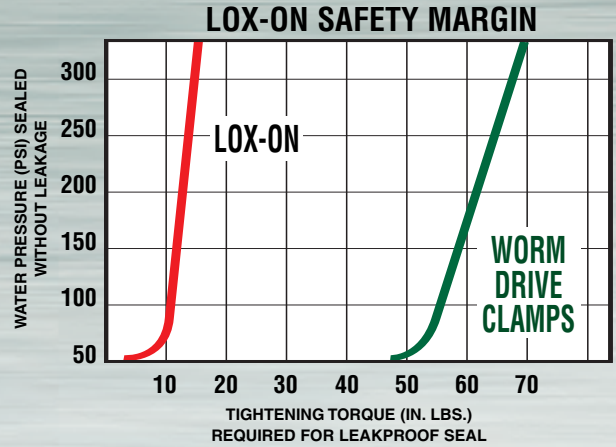
Screw: 5/16" hex-head.  
300 grade stainless steel.

Band and housing: 1/2" design.  
300 grade stainless steel.



Measurements in illustrations are in inches [millimeters]

LOX-ON		CLAMPING RANGE					
SAE Sizes	Ideal Part No.	English (in.)		Metric (mm)		Length	
		Min. Dia.	Max. Dia.	Min. Dia.	Max. Dia.	English (in.)	Metric (mm)
	<b>69</b>						
12	6912	11/16	1 1/4	17	32	4 13/16	122
20	6920	11/16	1 3/4	17	44	6 13/32	163
32	6932	11/16	2 5/8	17	67	8 29/32	226
72	6972	1 3/4	5	44	127	16 5/16	414
104	69104	4	7 1/4	102	184	23 5/16	592

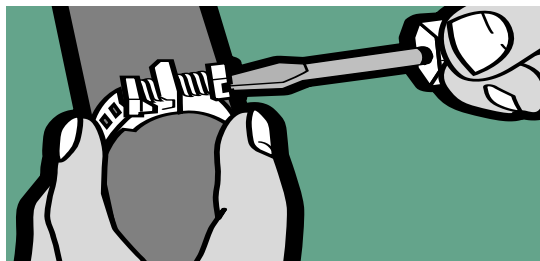


**A.** Illustrates Lox-On compression at only 20 in. lbs. tightening torque on 160 PSI (high density) polyethylene pipe. This is half the torque generally applied to conventional worm drive clamps.

**B.** Patented, offset buckle provides full circle seal. Lox-On conforms to the contour of the pipe.



Insert band thru buckle from underneath. Pull band snug about pipe and engage serration of band on inner lug.



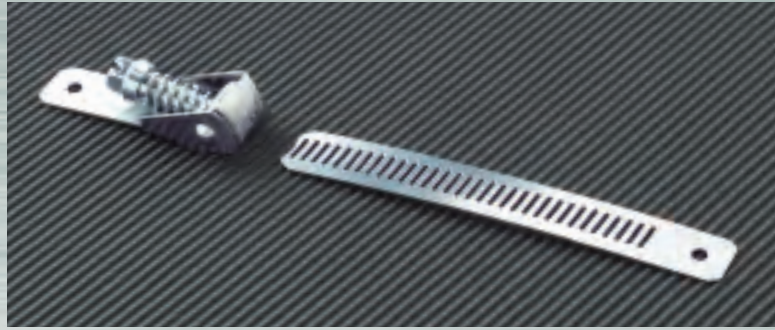
Bend band at 90° from buckle and engage outer tooth with serration. Hold band down and tighten screw.

Simplified inventory – just one size.  
#6932 will handle from 1/2" through 2" pipe.  
Lox-On comes flat – easy to stock, easy to store.  
A Lox-On user is never without the right size clamp.

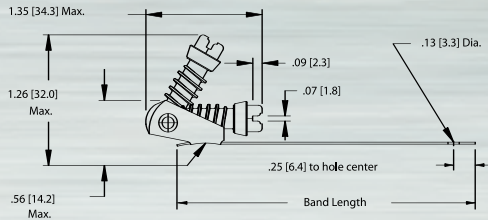


## TWO PART CLAMPS

This unique two part clamp is adaptable to a variety of latching or locking applications where repeated opening and closing is necessary. Holes in the end of each part allow for permanent installation of clamp with rivets or screws.

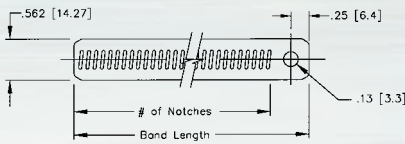


### Ideal 58 Series / Tridon 502 Series



HOUSING					
Ideal Part No.	Tridon Part No.	Band Length		Hole Diameter	
		Inches	mm	Inches	mm
<b>58 (2-pc) Series</b>	<b>502 Series</b>				
5823	502-002	1.86	47.2	0.13	3.3
5825	502-003	1.50	38.1	0.13	3.3
5829	502-004	3.72	94.5	0.13	3.3
5830	502-005	3.63	92.1	0.25	6.4

### Ideal 62 Series / Tridon 503 Series



Measurements in illustrations are in inches (millimeters)

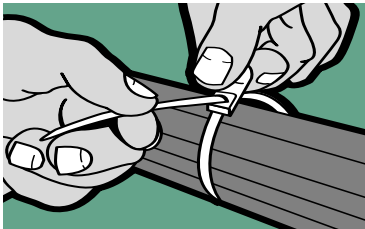
BAND					
Ideal Part No.	Tridon Part No.	Band Length		Hole Diameter	
		Inches	mm	Inches	mm
<b>62 (2-pc) Series</b>	<b>503 Series</b>				
62647	503-002	4.81	122.2	0.13	3.3
62648	503-003	3.88	98.4	0.13	3.3
62649	503-004	6.50	165.1	0.13	3.3
62650	503-005	4.75	120.7	0.13	6.4
62654	503-006	10.06	255.6	0.13	3.3
62655	503-007	2.00	50.8	0.13	3.3
62656	503-008	6.00	152.4	0.25	6.4

Screw: 5/16" hex-head. Plated carbon steel.  
Band and housing: 1/2" wide stainless steel.

Also available in all zinc-plated, carbon steel. Contact Ideal for details.

## NYLON CABLE TIES

One piece 6/6 nylon for tying, bundling and positioning in industrial, PHAC, automotive and marine applications. Corrosion and fungus-resistant. Available in diameters from 1/16" to 13".

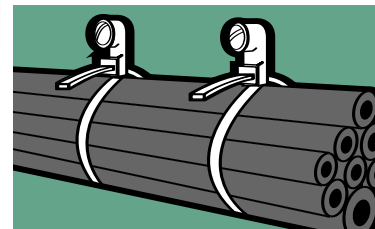


### Ideal 665 Series (Tridon N/A)

Self-locking.

- Install easily with or without tools
- Corrosion and fungus resistant
- Tapered tips slip easily under and around cables
- Flexible nylon conforms readily to most shapes
- Uniform serrations along the tie permit easy "pull-through" right down to the bundle – ready for final tensioning and cut off for a neat, tight harness

NYLON CABLE TIES - 665 SERIES				
Ideal Part No.	CLAMPING RANGE		Min. Tensile Strength	Applicable Mil. Spec.
	Min. Dia.	Max. Dia.		
<b>665</b>				
66501	1/16	1	18 lbs.	MS3367-4
66502	1/16	1 1/4	30 lbs.	MS3367-5
66505	1/16	1 3/4	50 lbs.	MS3367-1
66506	1/16	3	50 lbs.	MS3367-7
66507	1/16	4	50 lbs.	MS3367-2
66509	3/16	4	120 lbs.	MS3367-3
66510	3/16	6	175 lbs.	MS3367-3
66511	3/16	9	175 lbs.	MS3367-6
66512	3/16	13	175 lbs.	None



### Ideal 666 Series (Tridon N/A)

Self-locking with mounting heads for quick, simple cable mounting.

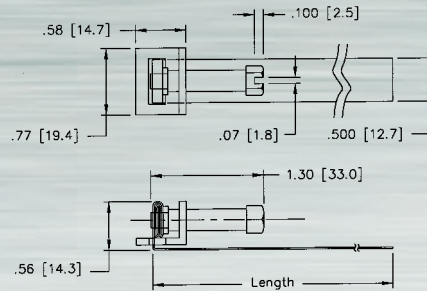
- Once ties are installed, simply pass a screw, bolt or rivet through mounting hole to secure harness in place
- Bundling and mounting is done with one unit

NYLON CABLE TIES - 666 SERIES				
Ideal Part No.	CLAMPING RANGE		Min. Tensile Strength	Hole Size
	Min. Dia.	Max. Dia.		
<b>666</b>				
66604	1/16	1 3/4	50 lbs.	0.208
66605	1/16	4	50 lbs.	0.208
66606	3/16	4	120 lbs.	0.250

## WRAPLOCK® CLAMPS

### Ideal 59 Series (Tridon N/A)

1/2" wide galvanized steel band. Plated carbon steel screw and buckle. 5/16" hex-head screw. Made in one piece. Conforms to any shape. Covers 1" (25mm) to 14 1/2" (305mm) diameter to 48" (1219mm) length.



WRAPLOCK		CLAMPING RANGE					
SAE Sizes	Ideal Part No.	English (in.)		Metric (mm)		Length	
		Min. Dia.	Max. Dia.	Min. Dia.	Max. Dia.	English (in.)	Metric (mm)
	<b>59</b>						
12	5912	1	3 1/2	25	89	12	305
15	5915	1	4 1/2	25	114	15	381
18	5918	1	5	25	127	18	457
24	5924	1	7	25	178	24	610
30	5930	1	9	25	229	30	762
48	5948	1	14 1/2	25	368	48	1219

## SINGLE EAR PINCH CLAMPS

Pinch Clamps are designed to fit most popular polyethylene and polybutylene water service lines. They're perfect for sprinkler systems, irrigation systems and most other low pressure applications.

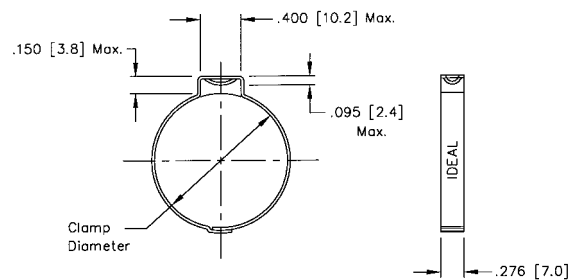
### Ideal 61 Series (Tridon N/A)

- 300 grade stainless steel construction for excellent corrosion resistance
- Welded construction for superior strength
- Quick, easy installation
- Permanent, tamper-proof 360° seal
- Compatible with most clinching tools



### How to Determine Proper Clamp Size:

Measure actual O.D. of the hose on the fitting. Select the nominal size clamp nearest to, but always larger than, the O.D. of the hose on the fitting.



Measurements in illustrations are in inches [millimeters]

PINCH CLAMPS		CLAMPING RANGE			
Ideal Part No.	Nominal Diameter	English (in.)		Metric (mm)	
		Min. Dia.	Max. Dia.	Min. Dia.	Max. Dia.
	<b>61</b>				
61198	3/4	0.669	0.779	17	20
61210	13/16	0.716	0.827	18	21
61256	1	0.898	1.008	23	25
61271	1 1/16	0.945	1.067	24	27
61316	1 1/4	1.122	1.244	29	31
61331	1 5/16	1.181	1.303	30	33
61346	1 3/8	1.240	1.362	32	34
61410	1 5/8	1.492	1.614	38	41
61425	1 11/16	1.551	1.673	40	42
61485	1 7/8	1.787	1.909	46	48

## FLEXIBLE HOSE CLAMP DRIVER

Stop using that old rigid nut driver and add some flexibility to your work! The flexible shaft and no-slip grip provide 90° access and work best in hard-to-reach places such as compact car and boat engines, as well as plumbing repair applications. The socket fits mini and standard hose clamp screw heads. Just flip the socket for the desired size of 1/4" or 5/16". Part no. 9999V (800019999).



## CUSTOM ENGINEERED CLAMPS

Ideal and Tridon custom designed clamps offer innovative solutions for unique applications.

From band notching and special screws to exotic finishes and sub assemblies, our engineers can design a product to fulfill your most challenging sealing and fastening applications.

We have been solving application problems in the automotive, marine, heavy duty, industrial and plumbing markets since 1913 – let us help solve yours.

Contact your local Ideal or Tridon representative today.



## IDEAL® TILT BIN MERCHANDISERS – 285 CLAMPS

The IDEAL Tilt Bin Merchandisers arrive fully loaded and labeled with the most popular clamp sizes for your market. Assortments are available in all stainless steel and all 300 grade to include Series 57, 67-1, 67-5, 63 and 68. Use these merchandisers in your counter area as an effective way to organize your clamp inventory and increase profits.

Size specifications: 23 5/8" x 5 1/4" x 13".

### 57 Series Automotive Assortment

Screw: Plated carbon steel.

1/2" band width, 5/16" micro band width.

Band and housing: All stainless steel.

**5703\***

57 SERIES AUTOMOTIVE ASSORTMENT CONTENTS		
SAE Size	Part No.	Qty.
4	6204	50
6	6206	50
10	5710	50
12	5712	60
20	5720	20
24	5724	20
28	5728	25
36	5736	10

### 67-1 Series Hardware Assortment

All stainless steel.

1/2" band width, 5/16" micro band width.

**6703-1\***

67-1 SERIES HARDWARE ASSORTMENT CONTENTS		
SAE Size	Part No.	Qty.
4	62604	50
6	62606	30
8	67081	30
10	67101	50
12	67121	40
16	67161	30
20	67201	20
24	67241	20
36	67361	10
56	67561	5

### 68 Series Hardware Assortment Hy-Gear®

Hy-Gear, All stainless steel.

9/16" band width, 5/16" micro band width.

**6803\***

68 SERIES HARDWARE ASSORTMENT HY-GEAR CONTENTS		
SAE Size	Part No.	Qty.
4	62604	50
6	62606	30
8	6808	30
10	6810	50
12	6812	40
16	6816	30
20	6820	20
24	6824	20
36	6836	10
56	6856	5



These hassle-free bins pop right out to make re-filling and organizing simple.

### 67-5 Series Marine Assortment

All high-nickel grade stainless steel.

1/2" band width, 5/16" micro band width.

**6703-5\***

67-5 SERIES MARINE ASSORTMENT CONTENTS		
SAE Size	Part No.	Qty.
4	62604	50
6	62606	30
8	67085	30
10	67105	45
16	67165	60
20	67205	30
28	67285	30
36	67365	10

### 63 Series Marine Assortment Hy-Gear®

Hy-Gear, All high-nickel grade stainless steel.

9/16" band width, 5/16" micro band width.

**6303\***

63 SERIES MARINE ASSORTMENT HY-GEAR CONTENTS		
SAE Size	Part No.	Qty.
4	62604	50
6	62606	30
8	6308	30
10	6310	45
16	6316	60
20	6320	30
28	6328	30
36	6336	10

\* Assortments available with or without barcoded clamps. All assortments ship with merchandiser loaded and labeled.

## IDEAL® PROFIT CENTER MERCHANDISERS — 120 CLAMPS

This compact, wall-mounted or counter display sells 120 full size and Micro-Gear® clamps from 1/4" to 2 3/4" clamping ranges. Available in multiple assortments, the 120 display helps you sell more clamps in less space.

Size specifications: 14 5/8" x 15 1/16" x 4 3/8".

### INDUSTRIAL ASSORTMENTS

#### 50 Series Industrial Assortment

Band and housing: Stainless steel.

Screw: Plated carbon steel.

9/16" band width.

**5002\***

#### 54 Series Industrial Assortment

Band and housing: Stainless steel.

Screw: Plated carbon steel, collared.

9/16" band width.

**5402\***

#### 57 Series Industrial Assortment

Band and housing: Stainless steel.

Screw: Plated carbon steel.

1/2" band width.

**5702\***

### MARINE ASSORTMENTS

#### 67-5 Series Marine Assortment

All high-nickel grade stainless steel.

1/2" band width.

**6702-5\***

#### 67-6 Series Marine Assortment

All 316 grade stainless steel.

1/2" band width.

**6702-6\***

#### 63 Series Marine Assortment

All high-nickel grade stainless steel.

9/16" band width.

**6304\***



### AUTOMOTIVE ASSORTMENTS

#### 50 Series Automotive Assortment

Band and housing: Stainless steel.

Screw: Plated carbon steel.

9/16" band width.

**5004\***

#### 54 Series Automotive Assortment

Band and housing: Stainless steel.

Screw: Plated carbon steel, collared.

9/16" band width.

**5404\***

#### 57 Series Automotive Assortment

Band and housing: Stainless steel.

Screw: Plated carbon steel.

1/2" band width.

**5704\***

### HARDWARE ASSORTMENTS

#### 64 Series Hardware Assortment

All stainless steel, 3/8" screw.

9/16" band width.

**6402\***

#### 67-1 Series Hardware Assortment

All stainless steel.

1/2" band width.

**6702-1\***

#### 68 Series Hardware Assortment

All stainless steel, 5/16" screw.

9/16" band width.

**6802\***

\* Assortments available with or without barcoded clamps.



## IDEAL® PROFIT CENTER MERCHANDISERS — 450 CLAMPS

This display features 450 full size and Micro-Gear® clamps from 1/4" to 5" clamping ranges. Available in multi assortments, the 450 display includes a built-in size chart for easy clamp selection and a plan-o-gram. Mount it to a pegboard or place on a shelf. Size specifications: 26 1/4" x 25" x 6 1/4".



### INDUSTRIAL ASSORTMENTS

#### 50 Series Industrial Assortment

Band and housing: Stainless steel.  
Screw: Plated carbon steel.  
9/16" band width.

**5005\***

#### 57 Series Industrial Assortment

Band and housing: Stainless steel.  
Screw: Plated carbon steel.  
1/2" band width.

**5705\***

### MARINE ASSORTMENTS

#### 67-5 Series Marine Assortment

All high-nickel grade stainless steel.  
1/2" band width.

**6705-5\***

#### 67-6 Series Marine Assortment

All 316 grade stainless steel.  
1/2" band width.

**6705-6\***

#### 63 Series Marine Assortment

All high-nickel grade stainless steel.  
9/16" band width.

**6305\***

### AUTOMOTIVE ASSORTMENTS

#### 50 Series Automotive Assortment

Band and housing: Stainless steel.  
Screw: Plated carbon steel.  
9/16" band width.

**5001\***

#### 54 Series Automotive Assortment

Band and housing: Stainless steel.  
Screw: Plated carbon steel, collared.  
9/16" band width.

**5405\***

### HARDWARE ASSORTMENTS

#### 67-1 Series Hardware Assortment

All stainless steel.  
1/2" band width.

**67050\***

#### 68 Series Hardware Assortment

All stainless steel.  
9/16" band width.

**6805\***

\* Assortments available with or without barcoded clamps. All assortments ship with merchandiser.

## VISI-PAK™ PACKAGING

Ideal products are offered in Visi-Paks, 10 pack boxes or bulk. Visi-Paks display the products to the consumer and include application information helpful in the retail or DIY markets.



# BRAND COMPARISONS

## COMPETITIVE CROSS-REFERENCE — GENERAL PURPOSE / SPECIALTY

COMPETITIVE CLAMP CROSS-REFERENCE LIST								
Ideal	Breeze	Dixon	Murray	MTD	Norton	ABA	Norma	Tridon
50 Series	100 Series	1000 Series	N/A	N/A	N/A	N/A	N/A	150 Series
52 Series	N/A	N/A	N/A	N/A	N/A	N/A	N/A	300 Series
52F Series	F Series	N/A	N/A	N/A	N/A	MINI G	N/A	905 Series (Also FI-X Series)
53 Series	92 Series	HL Series	48 Series	GSE Series	143 Series	N/A	N/A	613 Series (Also 'ET' Series)
54 Series	N/A	N/A	N/A	N/A	N/A	N/A	N/A	N/A
56 Series	N/A	LS Series	N/A	N/A	N/A	N/A	N/A	500 Series
57 Series	62 Series	HS Series	H Series	HF Series	015 Series	N/A	N/A	611 Series
58 Series	N/A	LSS Series	N/A	N/A	N/A	N/A	N/A	550 Series
60 Series	HTM Series	HTM Series	N/A	N/A	N/A	N/A	N/A	850 Series
6L Series	HTM-L Series	N/A	N/A	N/A	N/A	N/A	N/A	845 Series
6M Series	HTM-SPL Series	N/A	N/A	N/A	N/A	N/A	N/A	N/A
6P Series	HTM-SP Series	N/A	N/A	N/A	N/A	N/A	EXTRA - /16 C8 W4	N/A
6X Series	HP Series	HP Series	N/A	N/A	N/A	N/A	N/A	N/A
62M Series	37/67 Series	MAH Series	MMF-SS Series	MF-SS Series	031 Series	22 Series	N/A	345 Series
62P Series	35 Series	MH Series	MM Series	MF Series	011 Series	21 Series	N/A	325 Series (Also MH-X Series)
63 Series	300 Series	N/A	N/A	N/A	033 Series	N/A	N/A	225 Series
64 Series	N/A	N/A	N/A	N/A	N/A	N/A	N/A	N/A
65-E Series	94 Series	N/A	48-SS 305 Series	N/A	103 Series	N/A	N/A	615 Series
67-M Series	Unknown	N/A	N/A	N/A	N/A	N/A	N/A	N/A
67-1 Series	64 Series	N/A	H-SS Series	HF-SS Series	N/A	N/A	N/A	625 Series (Also HSS-X Series)
67-5 Series	63 Series	HAS Series	HF-SS Series	HF-SS Series	035 Series	N/A	N/A	620 Series (Also HAS-X Series)
67-6 Series	Unknown	N/A	N/A	N/A	N/A	N/A	N/A	665 Series
68 Series	200 Series	200 Series	N/A	N/A	N/A	N/A	N/A	N/A
53101 Series	N/A	N/A	N/A	N/A	N/A	SX090 - W2	TORRO - /9 C7 W2	N/A
53102 Series	72000	N/A	N/A	N/A	N/A	SX120 - W2	TORRO - /12 C7 W2	N/A
53103 Series	N/A	N/A	N/A	N/A	N/A	SX090 - W4	TORRO - /9 C7 W4	N/A
53104 Series	73000	N/A	N/A	N/A	N/A	12 or SX120-W4	TORRO - /12 C7 W4	N/A
Turn-Key Series	N/A	N/A	N/A	N/A	N/A	N/A	N/A	N/A

## COMPETITIVE CROSS-REFERENCE — HEAVY DUTY / CONSTANT TENSION

COMPETITIVE CLAMP CROSS-REFERENCE LIST						
Ideal	Breeze	Clampco	RG Ray	Voss	Tridon	
30010	TB	94100	650	T40C-75	813	
30020	B9222	N/A	700	TCS	814	
30030	B9226	94143	667	N/A	819	
41	CT-L	N/A	N/A	N/A	N/A	
43	N/A	N/A	N/A	N/A	N/A	
45	CT-LSS	N/A	N/A	N/A	N/A	
47	CT-94	N/A	N/A	N/A	N/A	
60	HTM	N/A	N/A	N/A	850	
6L	HTM-L	N/A	N/A	N/A	843	
6M	HTM-LSP	N/A	N/A	N/A	N/A	
6P	HTM-SP	N/A	N/A	N/A	N/A	
6X	HP	N/A	N/A	N/A	N/A	

N/A - Not Available

**Tomkins**  
Industrial and Automotive

---

**Amflo**®

 **Camel**®

**EDELMANN**®

**IDEAL**™

**PLEWS**™  
**LubriMatic**

  
**SCHRADER BRIDGEPORT**®

**Stant**®

**TRICO**®

**TRIDON**®

**TRU-FLATE**®

**Amflo:**

Air Line Accessories  
Pneumatic Hoses

**Camel:**

Tire Hardware  
Tire Repair  
Tire Gauges

**Edelmann:**

Power Steering Hose Assemblies  
Automotive Fittings  
Brake Lines  
Transmission Oil Cooler Lines & Fittings

**Ideal:**

Hose Clamps  
T-Bolts

**Plews/LubriMatic:**

Oils, Greases & Spray Lubricants  
Lubrication Equipment

**Schrader:**

Tire Valves (Passenger & Truck)

**Stant:**

Fuel, Radiator & Oil Filler Caps  
Thermostats  
Heater Cores & Heater Parts  
Cooling & Fuel Cap Testers

**Trico:**

Windshield Wiper Products

**Tridon:**

Windshield Wiper Products  
Hose Clamps  
Flashers

**Tru-Flate:**

Air Line Accessories  
Tire Gauges & Hardware