



The Right Connection™



Dixon Bayco Dry Bulk 2009 catalog

Distributed By:

Blank area for distributor information.

Table of Contents

Dry Bulk Products	2-19	Replacement Parts	20-29
Air / Pressure Relief Valves	2-4	Air Relief Valves	20-22
Vacuum Relief Valves	4	Vacuum Relief Valves	23
PVC Coated Lanyards	4	Swing Check Valves	24-29
Pneuclean™ Pneumatic Filtration System	5	Index	30-32
Tube Doors	6		
TTMA Series Flange Adapters.....	6		
Flanged Gaskets	7		
In-Line Sight Glass	7		
High Flow Swing Check Valves	8		
Swing Check Manifold Valves	9		
Standard Swing Check Valves	9		
Butterfly Valves	10-11		
400 Series	10		
390 Series	11		
Accessories.....	11		
Hopper Tees	12		
Disk Fluidizers	13		
Cam & Groove.....	14-15		
Adapters & Couplers x 150# Flanged Drilling	15		
Adapters & Couplers x Round Tank Truck Flange	15		
Adapters & Couplers x Straight Pipe Thread	15		
D.O.T. Push-In Fittings	16-17		
D.O.T. Air Brake Tubing Rolls	17		
Gauges	18		
Adapter Nipples	19		
Quick Release Couplings	19		

We Commit

- To ensure that internal and external customer needs are identified and that our products and services meet these needs.
- To fully meet and exceed the requirements of the ISO 9001 Quality Program.
- To strive for quality in each and every phase of our business.
- To exceed competitor's quality.
- To provide systems and training for all Dixon Bayco employees.
- To create an environment that will allow each employee to do it right the first time, and accept the responsibility for quality in each and every task they perform.
- That no employee will ever be called on to do anything morally, legally or ethically wrong.

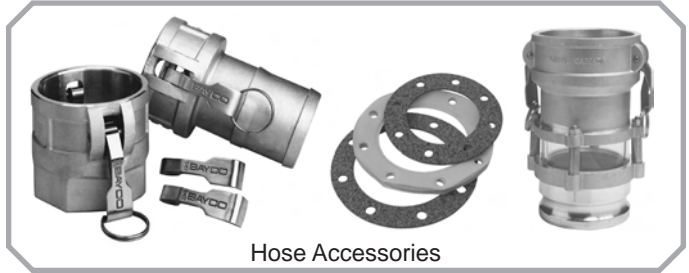
Product Changes and Corrections

Dixon Bayco has gone to considerable effort to assure the accuracy of the information provided. Please report any irregularities found for clarification or correction. Dixon Bayco reserves the right to modify or change product specification or to withdraw product offerings at any time without prior notice.

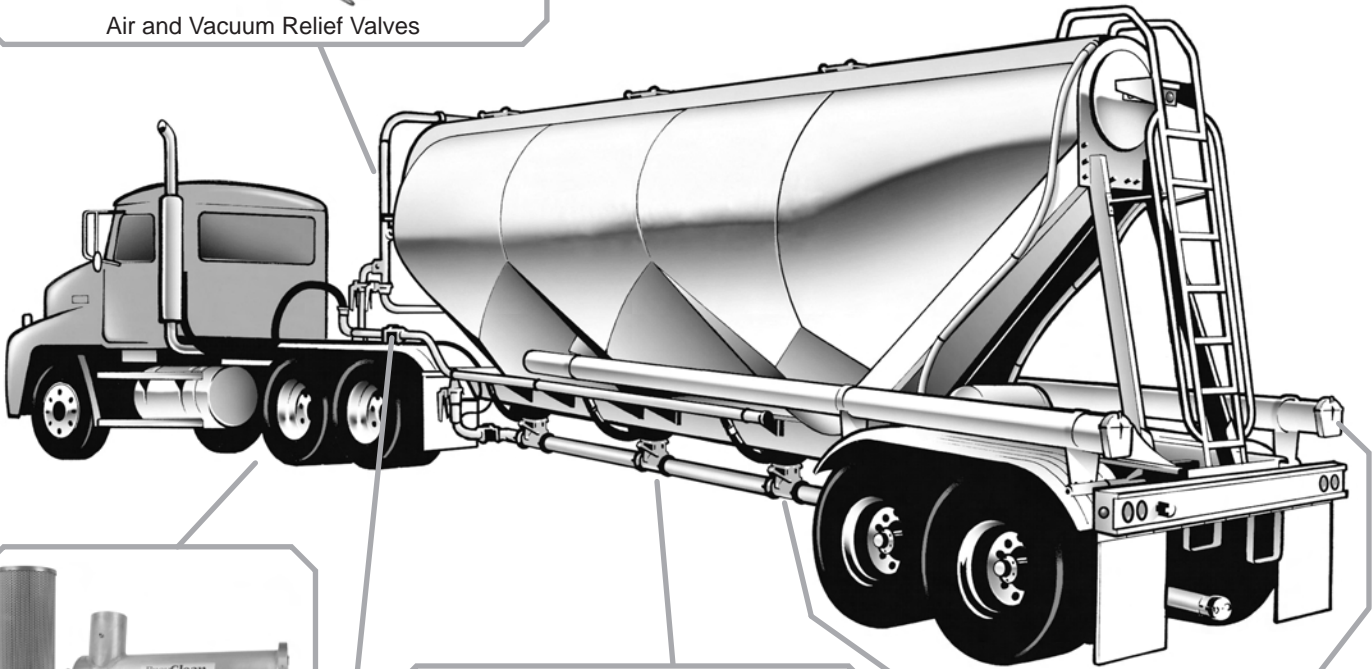
Bayco brand Dry Bulk products are designed for use with bulk trailers and truck blowers for the pneumatic transfer of dry bulk commodities such as powders, grains and plastic pellets. Other industrial applications are possible when pneumatic control of air or dry products is required.



Air and Vacuum Relief Valves



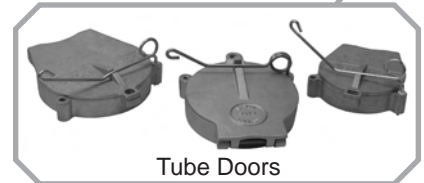
Hose Accessories



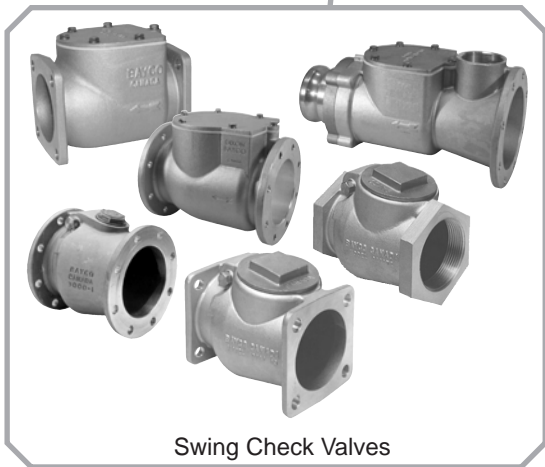
Pneuclean™
Filter Systems



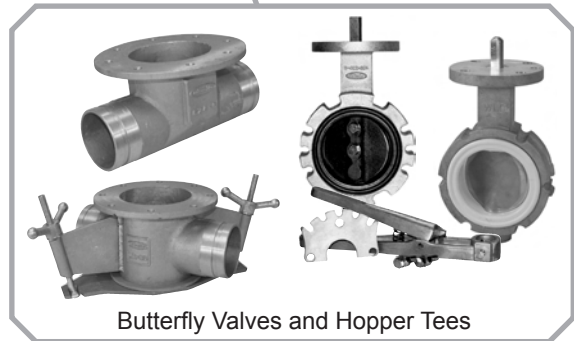
Fluidizers



Tube Doors



Swing Check Valves



Butterfly Valves and Hopper Tees

Air Relief Valves

Theory of Operation

All Bayco air relief valves are spring-loaded system-pressure actuated devices consisting of a valve disc held in a closed position against a valve seat by means of a spring. The pressure in the system to be protected acts on the valve disc and tends to open the valve; however, the spring load is set to ensure that at normal operating pressures, the pressure in the system is insufficient to open the valve. However, when the system pressure builds to a level where the pressure load on the valve disc is equal or near to the load exerted by the spring, the valve will begin to open. If the pressure in the system were to be held at this level, the load due to system pressure and the spring load would remain in equilibrium and the valve would be neither opened nor closed. In such circumstances the valve will tend to flutter on the valve seat and may release a small amount of air but will not be relieving significant pressure from the system. This point is known as the Warning Pressure, Cracking Pressure or Hissing Pressure.

If the pressure in the system continues to rise, the load acting on the face of the valve will also rise and will begin to exceed the load exerted by the spring. When the load due to system pressure exceeds the spring load, the valve will open and will remain open as long as the system pressure remains sufficient. This point is known as the Opening Pressure or Set Pressure (also referred to as Rated or Popping Pressure). The difference between the Crack Pressure and Opening Pressure varies between valves and is related to the system flow rate. However, the two should not be confused as there is a significant difference in pressure between the two points.

If the system pressure continues to rise, the valve will continue to open and will relieve more and more air until the valve is fully open. At this point the valve will be relieving close to its maximum airflow rate; further increase in system pressure will show only relatively minor increases in flow rate. If the system pressure decreases, the relieving airflow rate will reduce and the valve will start to close. However, the valve will not fully re-seat until some pressure below the Opening Pressure. This pressure is known as the Reseating Pressure and the difference between the two pressures is known as "Blowdown".

In practice the valve should be matched to the system to be protected such that the maximum airflow rate of the valve is never utilized, i.e. the valve should be capable of relieving a sufficient volume flow rate of air at the opening pressure to ensure that the system pressure drops significantly. If the valve is open and the system pressure continues to rise above the opening pressure then the valve is relieving less air than is being put into the system. This is a potentially dangerous situation that may lead to over pressurization. The relieving airflow rate of an air relief valve at the maximum allowable system pressure, and ideally at the Opening Pressure, should be well in excess of the system input flow rate at that same pressure.

Periodic Inspection, Cleaning and Maintenance

Important Note: Dixon Bayco air relief valves are designed and built to provide accurate and consistent operation; however periodic inspection, cleaning, and maintenance of these valves is required to ensure continued trouble free service.

Dixon Bayco air relief valves consist of a spring-loaded poppet valve that seals against a rigid annular valve seat. When the system pressure reaches the valve opening pressure the poppet lifts and system air passes under the poppet and out to atmosphere. When a sufficient volume of air has been relieved the system pressure will drop and the poppet will re-seat.

When these valves are used in applications that subject them to particulate laden air, there is potential for contamination of the valve, larger particles such as Grains, Plastic pellets etc. can get trapped between the valve seating surfaces. Applications involving fine particles such as Cement, Fly ash, Lime, Flour etc. can result in a cementing of hardened product on the valve seat or poppet surface. These situations can prevent the valve from fully re-seating, prevent it from opening and can lead to early opening or leakage from the valve.

To prevent this from occurring we advise that Air/Vacuum relief valves be regularly inspected, cleaned and maintained. At a minimum the valve seat and poppet sealing surface should be inspected and cleaned, and the small air vent hole in the top casting checked for blockage. The inspection, cleaning, and maintenance should be carried out with the valve removed from the system, and in a clean environment.

Air / Pressure Relief Valves

- Designed to relieve air pressure at a specific pressure setting (customer to advise when ordering - typical setting 15-25 PSI) Refers to the choice of pressure settings provided. Customer needs to request the required settings when ordering.
- Air Relief Flow Rates:
 - A2180** up to 500 SCFM
 - A2182** up to 1400 SCFM
 - A3180** up to 1300 SCFM
- All 2180 and 2182 series valves use white food grade, high temperature elastomer diaphragms.
- Tamper proof safety is improved by replacing old wire/lead seals with new more secure cup seals.
- In the US the customer can choose the preset pressure tolerance:
 - a) the conventional tolerance is set pressure $+3/-0$ PSI
 - b) the "A" absolute tolerance is set pressure $+1/-0$ PSI. The tighter tolerance air reliefs are designated with the prefix "A". (A2180, A3180, A2182)
- For the Canadian market only the "A" or absolute ($+1/-0$ PSI) tolerance air reliefs are available.

Note: Adjustable models A2180ADJ and A3108ADJ are only available with absolute ($+1/-0$ PSI) tolerance settings and are adjustable $+ or - 3$ PSI from specified setting.

SAFETY ALERT **Safety Note:** Air/vacuum relief valves must be regularly inspected, cleaned and maintained. Product particles can prevent the valve from fully re-seating which can lead to early opening/leakage from the valve or can prevent it from opening at all.

For ease of removal and installation, to allow for inspections, cleaning and maintenance all 2180 and 2182 series air relief valves are available with either male cam and groove or victaulic grooved connections.

Relief Valve Flow Rates vary depending on the preset relief pressure, for specific relief rates contact Dixon.

Air / Pressure Relief Valves

Designed for trailer service

Part #	Description
A2180/xxADJ	adjustable 2" female NPT
A3180/xxADJ	adjustable 3" female NPT



Shown with optional safety lanyard (CAL25) attached (available on page 4)



Shown with optional safety lanyard (CAL25) attached (available on page 4)



Part #	Description
2180/xx	2" female NPT
A2180/xx	2" female NPT
3180/xx	3" female NPT
A3180/xx	3" female NPT



Part #	Description
2180B/xx	2" adapter
A2180B/xx	2" adapter



Part #	Description
2180V/xx	2" grooved end
A2180V/xx	2" grooved end



Designed for high capacity blower or trailer service

The 2182 has advantages over other similar sized air relief valves. It provides nearly four times the relieving capacity and is constructed with an anti-galling anodized aluminum base, which reduces weight. Even though the 2182 is physically larger than the 2180 both weigh approximately 4 lbs. The 2182 has a silicone rubber coated poppet which reduces the tendency of products that "cake" such as cement, lime and flour to stick to the poppet.

Part #	Description	Part #	Description
2182F/xx	2" female NPT	2182B/xx	2" adapter
A2182F/xx	2" female NPT	A2182B/xx	2" adapter
2182/xx	2" male NPT	2182V/xx	2" grooved end
A2182/xx	2" male NPT	A2182V/xx	2" grooved end



/xx refers to the choice of pressure settings provided. Customer needs to request the required settings when ordering.

Air Relief Tester

This test stand is designed to duplicate the setting and testing conditions at our factory. Unit has ASME approved pressure vessel with stored air capacity to provide the proper flow of air during testing cycle. High flow air regulator with the flow needed to conduct a proper function test of Bayco air relief valves. Unit is provided with a test platform to safely hold air relief valve in test stand. This also allows for the safe disassembly and reassembly of valve for internal inspection or repair.

- Use shop air supply to test Bayco air relief valves
- ASME approved tank with safety pop off
- 20 gallon tank
- High flow pressure regulator
- Safely test and repair Bayco air relief valves



Part #
DB9000

This simple and low cost unit is designed to use air supply from a truck mounted or stationary blower package to test air relief valves. Unit can be assembled to test valves in the vertical or horizontal position the same as they are mounted in service. Locking cam and groove couplers ensure safe operation. Unit can be assembled to test male or female threaded air relief valves. Includes liquid filled stainless steel gauge for high accuracy. Modular design can be assembled quickly and taken apart for easy storage.

- Can be assembled to test valve in vertical or horizontal position
- Uses air supply from blower unit to test valve
- Liquid filled stainless steel gauge
- Modular design can be assembled quickly



Part #
DB9001

Air Relief Repair Kits

2180 and 2182 Series

Each repair kit contains:

- Complete instructions
- 15 or 18 PSI spring
- Spring seat
- Diaphragm
- Valve plate
- 4 bolts and lock washers
- Tamper proof seal
- Label

Part #	Description
2180RK15	2180 series repair kit, 15 PSI setting, -0/+2 PSI spring tolerance
2180RK18	2180 series repair kit, 18 PSI setting, -0/+2 PSI spring tolerance
2182RK15	2182 series repair kit, 15 PSI setting, -0/+2 PSI spring tolerance
2182RK18	2182 series repair kit, 18 PSI setting, -0/+2 PSI spring tolerance

SAFETY
ALERT

Safety Note: The detailed instructions enclosed with each repair kit must be followed. Failure to comply with these instructions including disassembly, tampering or modifications using processes and parts not described in these instructions or supplied with this rebuild kit will void the product warranty and could result in personal injury and extensive property damage.



Air / Pressure Relief Valves

Part #	Description
2215/xx	2" male

- Medium performance displacement
- For temperature applications to **500°F**
- All metal construction (no diaphragm)
- With tamper proof seal
- 2" male inlet made of anti-galling material

Vacuum Relief Valves

Vacuum relief valves are safety valves which relieve vacuum (instead of pressure) when exceeding a specific setting. Customers must advise vacuum setting required when ordering - typical setting 10-18 inches of mercury.



Part #	Size
1120/xx	1½"
2120/xx	2"
3120/xx	3"

Construction:

- Aluminum top
- Anti-galling alloy inlets
- Bronze valve
- Stainless steel spring
- Male inlets / female outlets

/xx refers to the choice of pressure settings provided. *Customer needs to request the required settings when ordering.*

PVC Coated Lanyards



Part #	Description
CAL15	15" long PVC coated carbon steel with aluminum crimp sleeves. One end factory crimped, one end un-crimped for field installation.
CAL25	25" long PVC coated carbon steel with aluminum crimp sleeves. One end factory crimped, one end un-crimped for field installation.

Pneuclean™ Pneumatic Filtration System

The Pneuclean™ unit is designed to remove microscopic particles generated by blowers during pneumatic conveying of contaminant-sensitive dry bulk products. Contaminants such as iron and hydrocarbons are produced by blowers and can adversely affect dry products such as plastic pellets and food materials.

These filter units are typically used on dry bulk tanker trucks and placed after the blower and before the bulk storage tanker. This in-line pneumatic system is also suitable for industrial applications or wherever microscopic filtration (up to 4 microns) of impurities is required.

Standard units employ 4" inlets and outlets. However, 3" plumbing can be used with available weld-on 4" x 3" cam and groove adapters.

Special cartridge-style filter elements have a typical life expectancy of approximately 12 months or 2000 hours of service.

In-Line High Pressure Air Filtration for 4" Air Lines

- Redesigned heavy duty aluminum canister
- Easy to inspect and service
- Noise reduction filter reduces noise by 13.8 db at 600 CFM
- FDA medium with 99.99% maximum efficiency at 4 microns
- Maximum air flow 1000 CFM's
- Back pressure: .05 PSI
- Quick release V clamp for easy inspection
- Overall weight 26 lbs.



PC5000

Complete Pneuclean™ Canister Filter Systems

Part #	Description
PC5000	schedule 40 pipe inlet and outlet
PC5000AA	4" cam and groove adapter inlet and outlet
PC5000VV	4" victaulic inlet and outlet
PC5000TTTE	4" TTMA inlet and 4" threaded male 90° outlet



PC5000TTTE

Replacement Parts

Part #	Description
PC5001	Pneuclean™ filter element
PC5003	Mounting bracket <i>(sold separately, 2 required)</i>
PC5004	Lid V clamp
PC5005	Lid O-ring
PC5006	Bottom gasket
PC5007	Lid

Tube Doors



TDF6



TDF7



TDF8

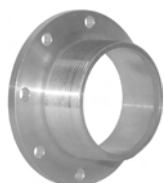
- Welds to standard aluminum hose tube
- Stainless steel spring
- Lockable
- Quality cast aluminum

Part #	Description
TDF6	used for 6" hose tube
TDF7	used for 7" hose tube
TDF8	used for 8" hose tube

TTMA Series Flange Adapters

- Available in male NPT and weldable designs
- Strong and lightweight
- Solid one piece design

The TTMA pattern bolts quickly and easily to standard 4" TTMA flanges and provides a 3" or 4" male NPT thread. The adapter provides a simple and easy way to convert female threaded components to standard TTMA flange configuration. Made of lightweight solid cast aluminum it is more durable than welded fabrications. The advanced design improves flow through adapters even on the 3" reducer. Compact size reduces the overall space needed for installation.



TTF4AL-4MT



TTF4AL-4EMT



TTF4AL-FT

TTMA flange x standard male NPT

Part #	Description
TTF3AL-3MT	3" TTMA flange x 3" male NPT thread
TTF4AL-3MT	4" TTMA flange x 3" male NPT thread
TTF4ALHC-3MT	4" TTMA flange x 3" male NPT thread hard-coated
TTF4AL-4MT	4" TTMA flange x 4" male NPT thread
TTF4ALHC-4MT	4" TTMA flange x 4" male NPT thread hard-coated

TTMA flange x extended length male NPT

Part #	Description
TTF4AL-3EMT	4" TTMA flange x 3" male NPT thread 3" extended length
TTF4AL-4EMT	4" TTMA flange x 4" male NPT thread 3" extended length

TTMA flange x female NPT

Part #	Description
TTF4AL-3FT	4" TTMA flange x 3" female NPT thread
TTF4AL-4FT	4" TTMA flange x 4" female NPT thread

Weldable Flanges



TTF4AL

Part #	Description
TTF3AL	Weldable aluminum flange, 3" TTMA bolt pattern
TTF4AL	Weldable aluminum flange, 4" TTMA bolt pattern
4443	Reducing flange, 4" TTMA to 3" TTMA aluminum

Flange Gaskets

For use with TTMA flanged fittings.

Size	Round Gaskets	Part #	OD	ID	THK
3"	Cork / Buna	300GTTFCB	5-5/8"	3-1/2"	1/8"
3"	Dixon Teflon® Envelope with Klinger Filler	300GTTFTK	5-5/8"	3-1/2"	1/16"
3"	Klinger	300GTTFK	5-5/8"	3-1/2"	1/8"
4"	Cork / Buna	400GTTFCB	6-5/8"	4-9/16"	1/8"
4"	Dixon Teflon® Envelope with Klinger Filler	400GTTFTK	6-5/8"	4-9/16"	1/16"
4"	Klinger	400GTTFK	6-5/8"	4-9/16"	1/16"



Size	API Round Gaskets	Part #	OD	ID	THK
3"	Teflon® with soft fiber core	40321TF	5-7/8"	3-1/2"	1/4"
4"	Teflon® with soft fiber core	40322TF	6-7/8"	4-9/16"	1/4"
4"	Sump Gasket, Teflon® with soft fiber core	40323TF	8-3/8"	6-9/16"	1/4"

Size	Square Gaskets	Part #	OD	ID	THK
3"	Cork/Buna Square Flange	300GDBSQCB	4-1/2"	3-3/8"	1/8"
3"	Klinger Square Flange	300GDBSQK	4-1/2"	3-3/8"	1/16"
3"	White EPDM Square Flange	300GDBSQE	4-1/2"	3-3/8"	1/8"

In-Line Sight Glasses

- Designed for dry bulk transfer applications
- Available in combination of 3" and 4" coupler or adapter ends
- **Includes:**
 - Aluminum bodies
 - Buna seals
 - Acrylic sight glasses
 - Stainless steel hardware
 - Bronze cam arms (on couplers)



3544CA

Part #	Description	Part #	Description	Part #	Description
3544CA	4" coupler x 4" adapter	3533AA	3" adapter x 3" adapter	3544CC	4" coupler x 4" coupler
3533CA	3" coupler x 3" adapter	3544AA	4" adapter x 4" adapter	3533CC	3" coupler x 3" coupler
3543CA	4" coupler x 3" adapter	3534AA	3" adapter x 4" adapter	3543CC	4" coupler x 3" coupler
3534CA	3" coupler x 4" adapter				

Replacement Parts

Part #	Description
6400SGK	Replacement sight glass kit, (2 Buna O-rings and sight glass)
6544CA-1	Sight glass bolt spacer (4 required)
SC5-16-18x2.75P	Bolts (4 required)
110978	Hex nuts (4 required)
110977	Lock washer (4 required)

High Flow Swing Check Valves

Swing check valves are designed specifically for service with pneumatic equipment which transfers dry bulk commodities. Check valves allow one way directional flow only. They are used as a protective safety device to prevent flow reversal should back pressure occur.

- High air flow body design
- Large maintenance / inspection lid
- Captive drop-in spring loaded food grade flapper assembly prevents contamination
- Heavy duty cast aluminum body with stainless steel hardware



3020TE

Threaded End (NPT)

Part #	Description	Length
3020TE	2" female NPT, white EPDM spring loaded flapper	4-5/8"
3030TE	3" female NPT, white silicone spring loaded flapper	7-1/8"
3030TE-SSP	3" female NPT, spring loaded silicone flapper	7-1/8"
3031TE	3" female NPT, spring loaded metal flapper	7-1/8"
4040TE	4" female NPT, spring loaded white silicone flapper	9"
4041TE	4" swing check valve with threaded ends, metal flapper	9"
4042TE	4" swing check valve with threaded ends, silicone flapper	9"



3020SQ

Square Flanged (TTMA)

Part #	Description	Length
3020SQ	2" square flange, white EPDM spring loaded flapper	4-5/8"
3030SQ	3" square flange, white silicone spring loaded flapper	6-7/8"
3031SQ	3" square flange, spring loaded metal flapper	6-7/8"
3030SQ-SSP	3" square flange, white silicone spring loaded flapper	6-7/8"



3030SQ

Round Flanged (TTMA)

Part #	Description	Length
3030RD	3" round TTMA flange, white silicone spring loaded flapper	6-7/8"
3030RD-SSP	3" round flange, spring loaded silicone flapper	6-7/8"
3031RD	3" round flange, spring loaded metal flapper	6-7/8"
4040RD	4" round TTMA flange	9"
4041RD	4" swing check valve, round flange, metal flapper	9"
4042RD	4" swing check valve, round flange, silicone flapper	9"

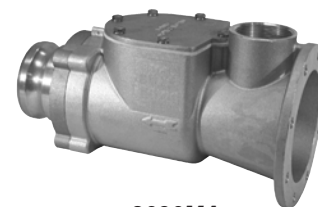


4040RD

Swing Check Manifold Valves

3" high flow swing check valve x 4" TTMA adapter, complete with 2" female NPT port for mounting an air relief valve

Part #	Description
3090M	3" swing check manifold - silicone flapper
3090MA	3" swing check manifold with 3" adapter - silicone flapper
3090MB	3" swing check manifold with 4" adapter - silicone flapper
3091MB	3" swing check manifold with 4" metal to metal seat NEW
3030SK	Security kit for 3" swing check manifold
3090MS	3" swing check manifold with security kit installed - silicone flapper
3090MAS	3" swing check manifold with 3" adapter and security kit installed - silicone flapper
3090MBS	3" swing check manifold with 4" adapter and security kit installed - silicone flapper
3091MA	3" swing check manifold with 3" adapter metal to metal flapper
3090MA-DC	3" swing check manifold with 3" adapter with dust cap and chain - silicone flapper
3090F	3" swing check manifold with 4" female NPT threaded end - silicone flapper
3090MA-W	3" swing check manifold with 3" adapter and special bolt holes for Wittig® blowers - silicone flapper



3090MA

Standard Swing Check Valves 3000 Series Swing Checks

- Cast aluminum bodies with bronze inspection caps
- Safety flapper assembly - all flapper assemblies are drilled and pinned and will not come apart
- Choice of seals: metal-to-metal, Buna or silicone rubber seals
- Choice of models with or without spring loaded flapper
- Large cap designs allow flapper repair/rebuild on unit

3" Threaded End (NPT)

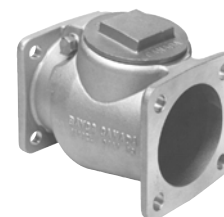
Part #	Description	Length
3000TE	Metal-to-metal seal	7-1/8"
3000TESP	Metal-to-metal seal and spring loaded flapper	7-1/8"
3000TEB	Buna rubber seal	7-1/8"
3000TES	Silicone rubber seal	7-1/8"
3000TEBSP	Buna seal and spring loaded flapper	7-1/8"
3000TESSP	Silicone rubber seal and spring loaded flapper	7-1/8"



3000TE

3" Square End (NPT)

Part #	Description	Length
3001SQN	Metal-to-metal seal	6-7/8"
3001SQSP	Metal-to-metal seal and spring loaded flapper	6-7/8"
3001SQB	Buna rubber seal	6-7/8"
3001SQS	Silicone rubber seal	6-7/8"
3001SQBSP	Buna seal and spring loaded flapper	6-7/8"
3001SQSSP	Silicone rubber seal and spring loaded flapper	6-7/8"



3001SQ

3" Round End (NPT)

Part #	Description	Length
3000N	Metal-to-metal seal	5-5/8"
3000SP	Metal-to-metal seal and spring loaded flapper	5-5/8"
3000B	Buna rubber seal	5-5/8"
3000S	Silicone rubber seal	5-5/8"
3000BSP	Buna seal and spring loaded flapper	5-5/8"
3000SSP	Silicone rubber seal and spring loaded flapper	5-5/8"



3000N

Gaskets can be found on page 7.

400 Series Butterfly Valves

Housing: Aluminum
 Discs: Type 316 stainless or nodular iron
 Stem Packing: Buna-N
 Stem Bushings: Thermal plastic polymer, top and bottom
 Resilient Seat: Nitrile

Handle: High strength 713 alloy aluminum with retrogressive reaging process - stronger than industry standard cast iron handles. Stainless steel spring and locking lever pin.
 Throttling Plate: Five position, high strength aluminum alloy

Nodular Iron



- Aluminum body
- Nodular iron disc
- 17-4 stainless steel stem
- Nitrile, FDA approved black seat

Complete Valve with Nodular Iron Disc		Nodular Iron Replacement Discs		Black Replacement Nitrile Seats	
Size	Part #	Size	Part #	Size	Part #
2"	2-400-1500	2"	2-400-422237F	2"	2-400-422500
3"	3-400-1500	3"	3-400-422237F	3"	3-400-422500
4"	4-400-1500	4"	4-400-422237U	4"	4-400-422500
4" TTMA	4A-400-1500	5"	5-400-422237U	4" TTMA	4A-400-422500
5"	5-400-1500	6"	6-400-422237U	5"	5-400-422500
6"	6-400-1500	8"	8-400-4222370	6"	6-400-422500
8"	8-400-1500	10"	10-400-4222370	8"	8-400-422500
10"	10-400-1500			10"	10-400-422500

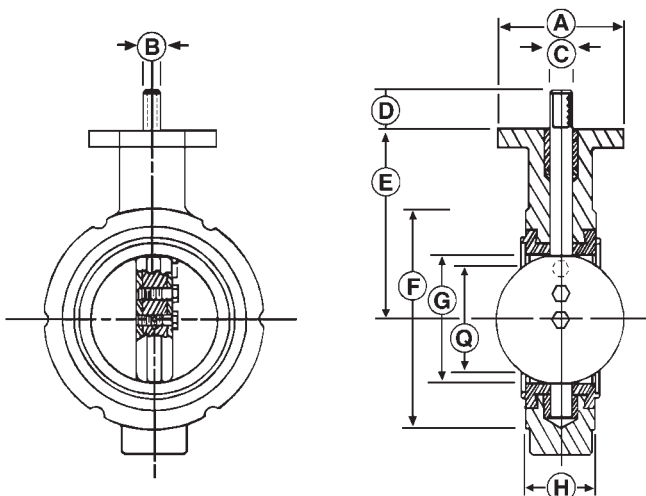
Stainless Steel



- Aluminum body
- 316 stainless steel disc
- 17-4 stainless steel stem
- Nitrile, FDA approved white seat

Complete Valve with 316 Stainless Steel Disc		316 Stainless Steel Replacement Discs		White Replacement Nitrile Seats	
Size	Part #	Size	Part #	Size	Part #
3"	3-400-3501	2"	2-400-422209F	2"	2-400-422501
4"	4-400-3501	3"	3-400-422209F	3"	3-400-422501
5"	5-400-3501	4"	4-400-422209U	4"	4-400-422501
6"	6-400-3501	5"	5-400-422209U	4"	4A-400-422501
		6"	6-400-422209U	5"	5-400-422501
				6"	6-400-422501

Dimensions and Weights



Size	A	B	C	D	E	F	G	H	Q	lbs.
2"	4.000	.375	.563	1.250	3.938	4.125	2.125	1.625	1.688	3
3"	4.000	.375	.563	1.250	4.875	5.375	3.125	1.750	2.875	5
4"	4.000	.438	.625	1.250	6.000	6.875	4.125	2.000	3.875	8
5"	4.000	.438	.625	1.250	6.000	7.625	5.188	2.125	5.000	9
6"	4.000	.438	.625	1.250	6.500	8.750	6.125	2.125	6.000	9

Notes:

- All dimensions are given in inches.
- Q dimension is the minimum allowable inside diameter of the pipe or mating flange.

390 Series Butterfly Valves

Housing: Aluminum
 Discs: Type 316 stainless
 Body Screws: Cadmium plated steel
 Stem Packing: Buna-N
 Stem Bushings: Thermal plastic polymer, top and bottom

Resilient Seat: Nitrile
 Handle: High strength 713 alloy aluminum with retrogressive rearing process - stronger than industry standard cast iron handles. Stainless steel spring and locking lever pin.
 Throttling Plate: Five position, high strength aluminum alloy

Stainless Steel

- Two piece aluminum body
- One piece 316 stainless steel disc and stem

- Nitrile, FDA approved white seat

Complete Valve with 316 Stainless Steel Disc

Size	Part #
3"	3-390-828501
4"	4-390-828U501
5"	5-390-828U501
6"	6-390-828U501 ¹

316 Stainless Steel Replacement Discs

Size	Part #
3"	3-390-209F
4"	4-390-209U
5"	5-390-209U
6"	6-390-209U

White Replacement Nitrile Seats

Size	Part #
3"	3-400-422501 ²
4"	4-400-422501 ²
5"	5-400-422501 ²
6"	6-390-393501



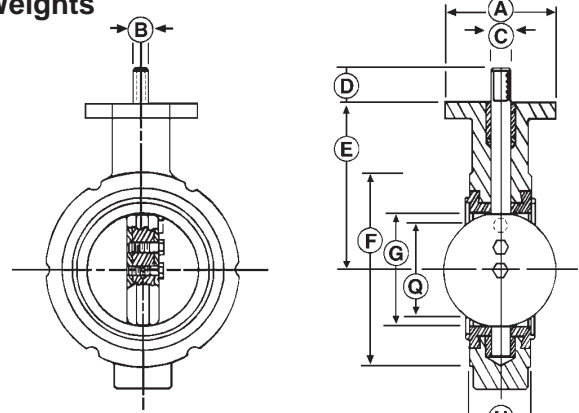
Order handles separately, see below.

¹ 6" 390 series, uses special handle **400-206-65** or **400-237-610**, see below.

² 3" thru 5" seats are interchangeable with the 400 series.

Dimensions and Weights

Size	A	B	C	D	E	F	G	H	Q	lbs.
3"	4.000	.375	.563	1.250	4.875	5.375	3.125	1.750	2.875	4
4"	4.000	.438	.625	1.250	6.000	6.875	4.125	2.000	3.875	7
5"	4.000	.438	.625	1.250	6.000	7.625	5.188	2.125	5.000	9
6"	4.000	.438	.625	1.250	6.500	8.750	6.125	2.125	6.000	9



Notes:

- All dimensions are given in inches.
- Q dimension is the minimum allowable inside diameter of the pipe or mating flange.

Butterfly Valve Accessories

- Includes handle plate kit and handle/lever assembly

Aluminum handle kit 5 position plate

Size	Part #
2" and 3"	206-23-5
4" thru 6"	206-46-5
6" (390)	400-206-65 ¹

Plated iron handle kit 10 position plate

Size	Part #
2" and 3"	237-23-10
4" thru 6"	237-46-10
6" (390)	400-237-610 ¹

17-4 stainless stems

Size	Part #
2"	2-400-422240
3"	3-400-422240
4"	4-400-422240
5"	5-400-422240
6"	6-400-422240

Aluminum handle kit 10 position plate

Size	Part #
8"	206-810
10"	206-1010

Bushing and packing kits

Size	Part #
2" and 3"	2-3-400-99-BPKIT
4" thru 6"	4-6-400-99-BPKIT
6" (390)	6-99-400BPKIT ¹

316 stainless screw sets

Size	Part #
2" and 3"	2-3-213
4" thru 6"	4-5-6-213



¹ Use on 6" 390 series, **6-390-828U501**, see above.

Hopper Tees

Straight Tees

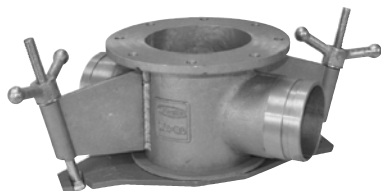
- Durable lightweight cast aluminum construction
- One piece casting design
- Groove x groove x flange design
- Dimensionally interchangeable with industry standard offerings



Part #	Description
4x4-S TEE	4" flange x 4" grooved ends
5x4-S TEE	5" flange x 4" grooved ends
5x4-VRST TEE	5" flange x 4" grooved ends low profile
6x4-S TEE	6" flange x 4" grooved ends
4x4-S TEE-E	4" flange x 4" grooved ends - urethane lined
5x4-S TEE-E	5" flange x 4" grooved ends - urethane lined
6x4-S TEE-E	6" flange x 4" grooved ends - urethane lined
5x4-VRST TEE K	5" flange x 4" grooved ends low profile with retention flange

Bottom Drop Tees

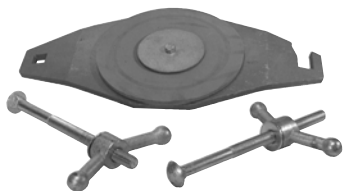
- Durable lightweight cast aluminum construction
- Groove x groove x flange design
- Dimensionally interchangeable with industry standard offerings
- Easy to use swing out bottom drop



Part #	Description
4x4-BD TEE	4" flange x 4" grooved ends
5x4-BD TEE	5" flange x 4" grooved ends
5x4-VRBD TEE	5" flange x 4" grooved ends low profile
6x4-BD TEE	6" flange x 4" grooved ends
8x4-BD TEE	8" flange x 4" grooved ends
4x4-BD TEE-E	4" flange x 4" grooved ends - urethane lined
5x4-BD TEE-E	5" flange x 4" grooved ends - urethane lined
6x4-BD TEE-E	6" flange x 4" grooved ends - urethane lined
8x4-BD TEE-E	8" flange x 4" grooved ends - urethane lined
5x4-VRBD TEE K	5" flange x 4" grooved ends low profile with retention flange

Accessories and Replacements Parts

Part #	Description
4x4BD DOOR	4x4 bottom drop door only
5/6BD DOOR	5&6 bottom drop door only
8x4BD DOOR	8x4 bottom drop door only
4x4-BD GASKET	4x4 bottom drop gasket only
5x4-BD GASKET	5x4 bottom drop gasket only
6x4-BD GASKET	6x4 bottom drop gasket only
8x4-BD GASKET	8x4 bottom drop gasket only
4x4BD DOORASBLY	4x4 bottom drop door assembly with gasket
5x4BD DOORASBLY	5x4 bottom drop door assembly with gasket
6x4BD DOORASBLY	6x4 bottom drop door assembly with gasket
8x4BD DOORASBLY	8x4 bottom drop door assembly with gasket
5x4 WING	5x4 bottom drop weld on replacement ring (each)
6x4 WING	6x4 bottom drop weld on replacement ring (each)
8x4 WING	8x4 bottom drop weld on replacement ring (each)
3/8 T-BOLT	4x4 bottom drop door T-bolt (each)
3/8 INSERT	4x4 bottom drop door threaded insert (each)
BD WINGNUT	5/6/8 bottom drop wing nut (each)
BD BOLTS	5/6/8 bottom drop bolt (each)
GASKET RETAINER	Gasket retainer - all sizes
3/8 RETAINERBOLT	S/S 3/8 gasket retainer bolt and locknut - all sizes
5-RF	Retention flange for low profile tee's

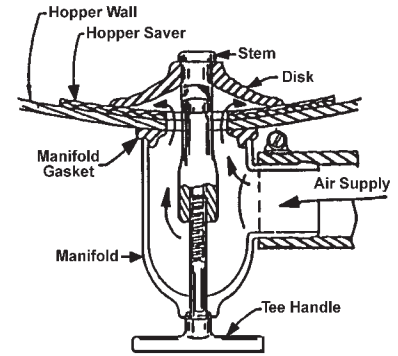


Disk Fluidizer

Works effectively to provide aeration, vibration and directional air flow required for rapid unloading of dry bulk trailers and containers.

Product Features

- Seals completely to the hopper or wear plate to stop the back flow of product into aeration lines - even when flood loading
- Designed to provide the optimum amount of air volume for efficient pneumatic unloading of your bulk trailer, allowing more airflow, less back pressure and higher unloading rates
- Durable, food grade silicone resists hardening, cracking or tearing. Robust design does not have snap retention legs that can break off or flimsy disks that crack and wear prematurely.
- Material is either a clear-view engineered plastic or grey nylon. Fluidizer component parts are manufactured from FDA approved materials and will withstand operating temperatures up to **350°F**.
- Fluidizer components can be used as direct replacements for Sure Seal, Fruehauf, Heil or Polar aerators.

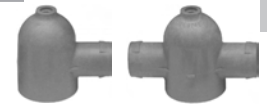


Trailer Components

Part #	Description
4124	Blue silicone disk, food grade
4134	White silicone disk, food grade
4125	Grey stem, brass insert
4135	Natural stem, stainless insert
4155	Aluminum stem
4157	Carbon steel stem
4126B	Hopper saver, 1½" opening, white silicone backing
4127	Blue silicone manifold gasket, food grade
4137	White silicone manifold gasket, food grade
5050	20" stainless steel fluidizer plate 16" ID (includes 3 disks)
5052	20" carbon steel fluidizer plate 16" ID (includes 3 disks)
5012	Neoprene gasket 20" OD



Part #	Description
4121	Manifold, 1-port grey
4122	Manifold, 2-port grey
4123	Manifold, 3-port grey
4621	Manifold, 1-port clear
4622	Manifold, 2-port clear
4623	Manifold, 3-port clear
4129	Tee handle assembly, stainless
4130	Raised tee handle assembly
4139	Hex bolt assembly, stainless
4149	Internal hex bolt assembly, stainless
4159	Bolt assembly, T.I.R., stainless
4111	Hopper plug with gasket, 1-3/8" hole
4167	Hopper plug with gasket, 1-1/2" hole



Commonly Used Assemblies

These are standard assemblies for most non-food grade trailers. It has a hopper saver which is used in aluminum trailers that haul abrasive products like cement and sand.

Part #	Description
111111	1-port assembly, blue disk, grey stem hopper saver, blue gasket, 1-port grey manifold, tee handle
111131	3-port assembly, blue disk, grey stem hopper saver, blue gasket, 3-port grey manifold, tee handle

These are standard assemblies being used in Heil trailers.

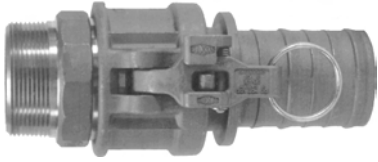
Part #	Description
111141	1-port assembly, blue disk, grey stem hopper saver, blue gasket, 1-port clear manifold, tee handle
111161	3-port assembly, blue disk, grey stem hopper saver, blue gasket, 3-port clear manifold, tee handle

These are typical assemblies used in steel trailers. They do not include the hopper saver.

Part #	Description
113111	1-port assembly, blue disk, grey stem, blue gasket, 1-port grey manifold, tee handle
113131	3-port assembly, blue disk, grey stem, blue gasket, 3-port grey manifold, tee handle

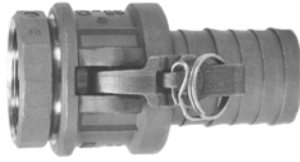
Cam and Groove Couplings

- Sizes available from ½" through 8"
- Swaged connections available
- Interchange with products manufactured to MIL-C-27487F
- Available in aluminum, brass, iron, stainless steel, plastic



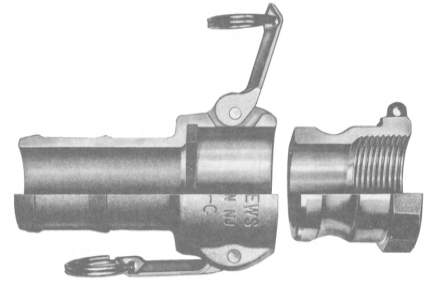
EZ Boss-Lock

- Extremely easy to open and close without inserting clips or pins. Ideal for vibration tolerant locking.
- Resistant to accidental disconnection when dragged.



Boss-Lock

- Cast-in lugs allow safety clips to be attached once the lugs are passed through slots in the special cam lever arms. These clips prevent the coupler from being unlocked until they are removed, providing a positive locking action.



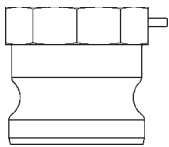
Dixon

- Durable stainless steel cam arm pins will not rust or bind.
- Recess holds gasket firmly in place, ensuring proper placement.
- Long shank design allows proper banding thus eliminating the major cause of hose damage.

See Current Dixon Price List for complete pricing and part#'s.

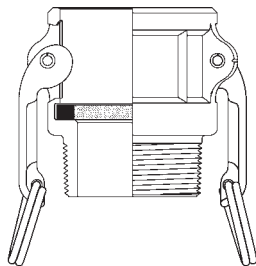
Type A

(male adapter x female NPT)



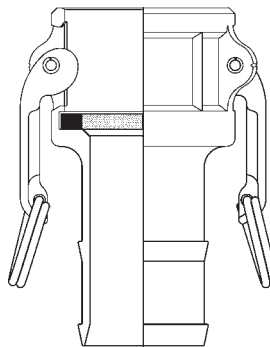
Type B

(female coupler x male NPT)



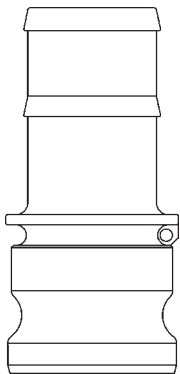
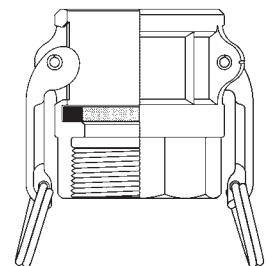
Type C

(female coupler x hose shank)



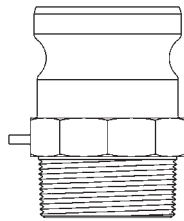
Type D

(female coupler x female NPT)



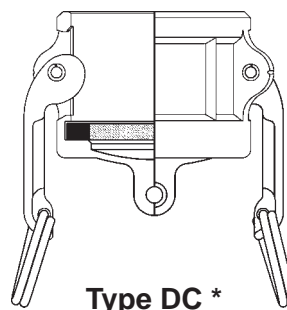
Type E

(male adapter x hose shank)



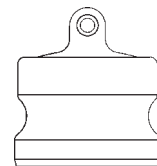
Type F

(male adapter x male NPT)



Type DC *

(dust cap)



Type DP *

(dust plug)



* Dust caps and dust plugs are not to be used in pressure applications for safety and environmental reasons.

Adapters and Couplers x 150# Flanged Drilling



Adapter x 150# ASA flange drilling

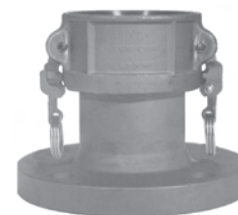
Size	Alum. Part #	Iron Part #	St. Stl. Part #
1"	---	---	100-AL-SS
1½"	---	---	150-AL-SS
2"	200-AL-AL	---	200-AL-SS
3"	300-AL-AL	300-AL-MI	300-AL-SS
4"	400-AL-AL	---	400-AL-SS
6"	600-AL-AL	---	600-AL-SS
8"	800-AL-AL*	---	---



Dixon

Coupler x 150# ASA flange drilling

Size	Aluminum Part #	Stainless Steel Part #
1"	---	100-DL-SS
1½"	---	150-DL-SS
2"	200-DL-AL	200-DL-SS
3"	300-DL-AL	300-DL-SS
4"	400-DL-AL	400-DL-SS
6"	600-DL-AL	600-DL-SS
8"	800-DL-AL*	---



EZ Boss-Lock

Coupler x 150# ASA flange drilling

Size	Stainless Steel Part #
1"	RDL100EZ*
1½"	RDL150EZ*
2"	RDL200EZ
3"	RDL300EZ*
4"	RDL400EZ*
6"	RDL600EZ*

* welded fabrication

Adapters and Couplers x Round Tank Truck Flange

Flange gaskets are on page 7

Straight Design



Adapter x round tank truck flange

Size	Aluminum Part #	Stainless Steel Part #
3"	300-ALT-AL	300-ALT-SS*
3" x 4"	3040ALT-AL	---
4"	400-ALT-AL	400-ALT-SS*
6"	600-ALT-AL	---



Coupler x round tank truck flange

Size	Aluminum Part #
3"	300-DLT-AL
3" x 4"	3040DLT-AL
4"	400-DLT-AL
6"	600-DLT-AL

* welded fabrication

Angled Design



4" angled adapter x round tank truck flange

Size	Aluminum Part #	Description
4"	40022ALTAL	4" adapter at a 22½° angle from a round tank truck flange



4" angled coupler x round tank truck flange

Size	Aluminum Part #	Description
4"	40022DLTAL	4" coupler at a 22½° angle from a round tank truck flange

Adapters and Couplers with Straight Pipe Thread (NPSM)

Adapter

Size	Aluminum Part #
4"	400-AS-AL



Boss-Lock Coupler

Size	Aluminum Part #
4"	ADS400



Vegetable fiber gaskets are standard in threaded end. Replacement fiber gasket part # **400GAGFI**

D.O.T. Push-in Fittings

Materials:

- Body (straights) tube, supports and grippers: brass CA360
- Forged elbows and tees: brass CA377
- O-ring: Buna-N
- Thread sealant: Loctite 516

Working Pressure: Vacuum to **150 PSI**

Working Temperature: **-40°F to 200°F**

Threads: NPTF standard

Compatible Tubing: Designed for use with SAE J844 nylon tubing meets Department of Transportation FMVSS-106

Male Elbows

(Tube to Male NPT)

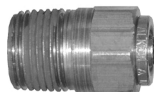
Tube O.D.	Male NPT	Part #
1/4"	1/8"	AQ69DOT4x2
1/4"	1/4"	AQ69DOT4x4
3/8"	1/4"	AQ69DOT6x4



Male Connectors

(Tube to Male NPT)

Tube O.D.	Male NPT	Part #
1/4"	1/8"	AQ68DOT4x2
1/4"	1/4"	AQ68DOT4x4
1/4"	3/8"	AQ68DOT4x6
3/8"	1/4"	AQ68DOT6x4
3/8"	3/8"	AQ68DOT6x6



Swivel Male Elbows

(Tube to Male NPT)

Tube O.D.	Male NPT	Part #
1/4"	1/8"	AQ69DOTS4x2
1/4"	1/4"	AQ69DOTS4x4
1/4"	3/8"	AQ69DOTS4x6
3/8"	1/4"	AQ69DOTS6x4
3/8"	3/8"	AQ69DOTS6x6



Swivel Male Branch Tees

(Tube to Male NPT)

Tube O.D.	Male NPT	Part #
1/4"	1/8"	AQ71DOTS4x2
1/4"	1/4"	AQ71DOTS4x4



Swivel Male Branch Tees

(Tube to Tube)

Tube O.D.	Male NPT	Part #
1/4"	1/8"	AQ72DOTS4x2
1/4"	1/4"	AQ72DOTS4x4



Union Tees

(Tube to Tube)

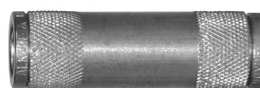
Tube O.D.	Part #
1/4"	AQ64DOT4
3/8"	AQ64DOT6



Union Connectors

(Tube to Tube)

Tube O.D.	Part #
1/4"	AQ62DOT4
3/8"	AQ62DOT6



Unions

(Tube to Tube)

Tube O.D.	Part #
1/4"	31065600DOT
3/8"	31066000DOT



Union Elbows

(Tube to Tube)

Tube O.D.	Part #
1/4"	31025600DOT
3/8"	31026000DOT



Union Tees

(Tube to Tube)

Tube O.D.	Part #
1/4"	31045600DOT
3/8"	31046000DOT



Y Unions

(Tube to Tube)

Tube O.D.	Part #
1/4"	31405600DOT
3/8"	31406000DOT



D.O.T. Push-in Fittings

Male Elbows

(Tube to Male NPT)

Tube O.D.	Male NPT	Part #
1/4"	1/4"	31095614DOT
1/4"	3/8"	31095618DOT
3/8"	1/4"	31096014DOT
3/8"	3/8"	31096018DOT



Y Connectors

(Tube to Male NPT)

Tube O.D.	Male NPT	Part #
1/4"	1/4"	31485614DOT



Straight Male Connectors

(Tube to Male NPT)

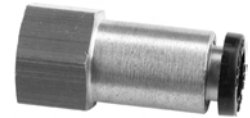
Tube O.D.	Male NPT	Part #
1/4"	1/4"	31155614DOT
1/4"	3/8"	31155618DOT
3/8"	1/4"	31156014DOT
3/8"	3/8"	31156018DOT



Straight Female Connectors

(Tube to Male NPT)

Tube O.D.	Male NPT	Part #
1/4"	1/4"	31145614DOT
3/8"	3/8"	31146018DOT



Male Branch Tees

(Tube to Male NPT)

Tube O.D.	Male NPT	Part #
1/4"	1/4"	31085614DOT
1/4"	3/8"	31085618DOT
3/8"	1/4"	31086014DOT
3/8"	3/8"	31086018DOT



Male Branch Tees

(Tube to Male NPT)

Tube O.D.	Male NPT	Part #
1/4"	1/4"	31035614DOT
1/4"	3/8"	31035618DOT
3/8"	1/4"	31036014DOT
3/8"	3/8"	31036018DOT



D.O.T. Air Brake Tubing Rolls

- Meets Department of Transportation FMVSS-106 nylon material conforming to SAE J844
- Shipped in lengths of 100'
- Working Pressure: **150 PSI**
- Temperature Range: **-40°F to 200°F**



O.D.	Length	Color	Part #
1/4"	100'	Black	J844-04-BL-100
1/4"	100'	Blue	J844-04-B-100
1/4"	100'	Red	J844-04-R-100
3/8"	100'	Black	J844-06-BL-100
3/8"	100'	Blue	J844-06-B-100
3/8"	100'	Red	J844-06-R-100

Vacuum Gauges

- ASME B40.1, Grade B accuracy (+/- 3-2-3 % accuracy)
- ABS plastic case
- Bronze bourdon tube
- Polycarbonate crystal
- Black aluminum pointer
- Brass movement with polyester segment, designed for extended wear
- Ambient temperature range of **-40°F to 150°F**



2" Face
(1/4" Lower Mount)

Mercury (Hg)	Fig. Inter.	Minor Grad.	Part #
30"	5"	0.5"	GL105

2" Face
(1/4" Center Back Mount)

Mercury (Hg)	Fig. Inter.	Minor Grad.	Part #
30"	5"	0.5"	GL205

2 1/2" Face
(1/4" Lower Mount)

Mercury (Hg)	Fig. Inter.	Minor Grad.	Part #
30"	5"	0.5"	GL305

Panel Mount Gauges

- Accuracy class: +/- 1% of span
- Material of wetted parts: copper alloy
- Window: acrylic, snap in
- Dial: aluminum, white
- Pointer: aluminum, black, adjustable
- Mounting flange/bracket: rear flange, stainless steel



4 1/2" Face
(1/4" Lower Mount)

PSI	Part #
0-15	4277750-0001
0-30	4277768-0001
0-60	4277776-0001

Standard Dry Gauges

- Polycarbonate crystal
- Black aluminum pointer
- PowerFlex™ movement with polyester segment, designed to resist the effects of shock, vibration and pulsation.
- Ambient temperature range of **-40°F to 150°F**
- ASME B40.1, Grade B (+/- 3-2-3% accuracy)
- ABS plastic case
- C-shaped bronze safety bourdon tube (600 PSI and lower) helical wound bronze safety bourdon tube (1000 PSI and higher)



1 1/2" Face
(1/8" Center Back Mount)

PSI	Fig. Inter.	Minor Grad.	Part #
0-30	5	.5	GC605
0-60	5	1	GC610
0-100	10	2	GC615
0-160	20	5	GC620
0-200	20	5	GC625

2" Face
(1/4" Center Back Mount)

PSI	Fig. Inter.	Minor Grad.	Part #
0-15	1	.5	GC200
0-30	5	.5	GC215
0-60	5	1	GC220
0-100	10	2	GC225
0-160	20	5	GC230
0-200	20	5	GC235
0-300	30	5	GC240

2" Face
(1/4" Lower Mount)

PSI	Fig. Inter.	Minor Grad.	Part #
0-15	1	.5	GL100
0-30	5	.5	GL115
0-60	5	1	GL120
0-100	10	2	GL125
0-160	20	5	GL130
0-200	20	5	GL135
0-300	30	5	GL140



Adapter Nipples

These fittings are designed to provide minimum pressure drop and uniform strength. Maximum working pressure is **1000 PSI**.

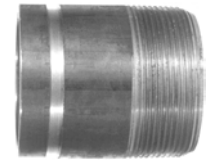
Short Hex Style (series HN)

Size	Part #
2"	A712S
2½"	A7125S
3"	A713S
4"	A714S



Long Pipe Style (series AN)

Size	Part #
2"	A712
2½"	A7125
3"	A713
4"	A714
5"	A715
6"	A716



Items will be discontinued as stock is depleted.

Victaulic x Weld

Size	Aluminum Part #	Carbon Steel Part #	316 Stainless Steel Part #
2"	AVN2000-200	VN2000-200	VNR2000-200
2½"	AVN2500-200	VN2500-200	VNR2500-200
3"	AVN3000-200	VN3000-200	VNR3000-200
4"	AVN4000-200	VN4000-200	VNR4000-200



Quick Release Couplings

Quick Release couplings are specially designed for applications requiring a quick connection and/or disconnection of a pipe joint. A locking pin through the handle prevents accidental opening of the coupling. Ductile iron body with zinc plating and steel safety clip. Maximum working pressure is **300 PSI**.

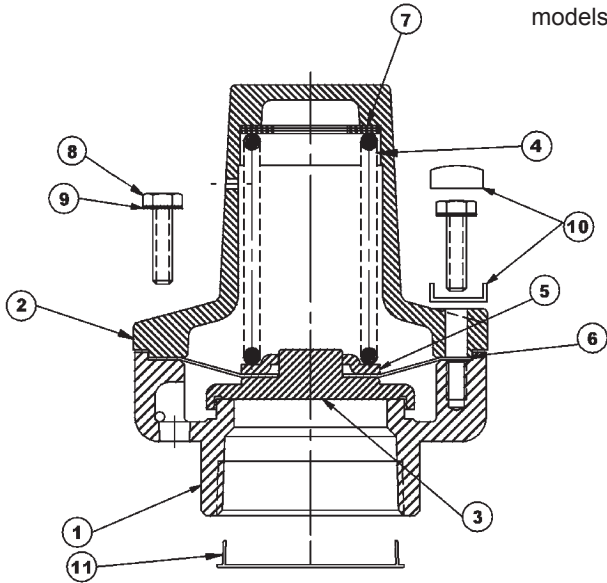
- Interchangeable with:
Victaulic #78
Grinnell's #7003

Nominal Size	Pipe OD	Max. End Load lbs.	Approx. Weight lbs.	Part # w/ EPDM gasket	Part # w/ Buna-N gasket
1½"	1.900"	850	1.5	H315	H315BU
2"	2.375"	1329	2.5	H32	H32BU
2½"	2.875"	2120	4.0	H325	H325BU
3"	3.500"	2886	3.8	H33	H33BU
4"	4.500"	4771	6.0	H34	H34BU
6"	6.625"	10341	8.6	H36	H36BU



2180 Series 2" Air Relief Valves

models 2180 and A2180



Bill of Materials

Item #	Description	Qty
1	Vent cowl	1
2	Top body	1
3	Valve	1
4	Spring	1
5	Valve seat	1
6	Diaphragm	1
7	Spacers	-
8	Body bolt	4
9	Body bolt washer	4
10	Cup seal	1
11	Plug	1

Important Note !

Only 15 PSI and 18 PSI repair kits are available (below), all valves of other pressure settings must be returned to Dixon Bayco for rebuilding.



The detailed instructions enclosed with each repair kit must be followed. Failure to comply with these instructions including disassembly, tampering or modifications using processes and parts not described in these instructions or supplied with this rebuild kit will void the product warranty and could result in personal injury or death and extensive property damage.

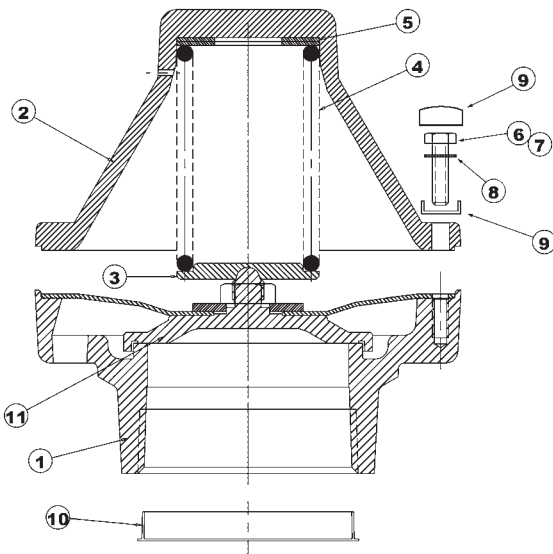
Repair Kits

Part #	Description	includes item #s
2180RK-15	2180-15 repair kit, 15 PSI spring (+2/-0 PSI tolerance), spring seat, diaphragm, valve plate, bolts, lockwashers, tamper proof seal, & valve label	3, 4, 5, 6, 8, 9, 10
2180RK-15A	A2180-15 repair kit, 15 PSI spring (+1/-1 PSI tolerance), spring seat, diaphragm, valve plate, bolts, lockwashers, tamper proof seal, & valve label	3, 4, 5, 6, 8, 9, 10
2180RK-18	2180-18 repair kit, 18 PSI spring (+2/-0 PSI tolerance), spring seat, diaphragm, valve plate, bolts, lockwashers, tamper proof seal, & valve label	3, 4, 5, 6, 8, 9, 10
2180RK-18A	A2180-18 repair kit, 18 PSI spring (+1/-1 PSI tolerance), spring seat, diaphragm, valve plate, bolts, lockwashers, tamper proof seal, & valve label	3, 4, 5, 6, 8, 9, 10

Repair kits fit the "2180 series" (non adjustable) relief valves with female NPT, victaulic groove and cam & groove adapter ends. (not for use in the adjustable "2180 series")

3180 Series 3" Air Relief Valves

models 3180 and A3180



Bill of Materials

Item #	Description	Qty
1	Bottom cowl	1
2	Cover	1
3	Spring seat	1
4	Spring	1
5	Set washer	1
6	Hex screw	2
7	Drilled screw	2
8	Lock washer	4
9	Cup Seal	1
10	Plug	1
11	Valve sub-assembly	1

Important Note !

Repair kits are not available. All "3180 & A3180" relief valves must be returned to Dixon Bayco for rebuilding.



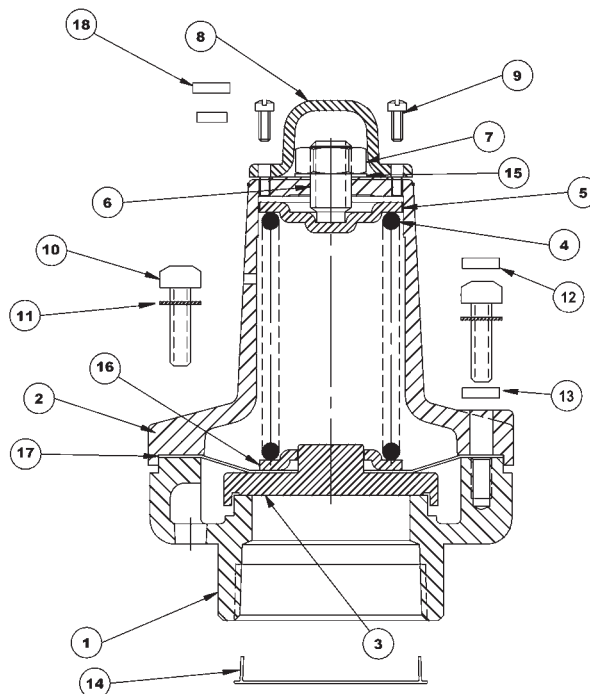
Disassembly, tampering or modifications will void the product warranty and could result in personal injury or death and extensive property damage.

2" and 3" Adjustable Air Relief Valves

models A2180ADJ and A3180ADJ

Bill of Materials

Item #	Description	Qty
1	Vent cowl	1
2	Top body	1
3	Valve	1
4	Spring	1
5	Spring plate	1
6	Adjustable screw	1
7	Lock nut	1
8	Adjustment cap	1
9	Cap screw	2
10	Body screw	4
11	Body screw lock washer	4
12	Cup seal top	1
13	Cup seal bottom	1
14	Plug	1
15	Lock washer	1
16	Spring seat	1
17	Diaphragm	1
18	Cap screw cup seal	1



Important Note !

Repair kits are not available. All "Adjustable" relief valves must be returned to Dixon Bayco for rebuilding.



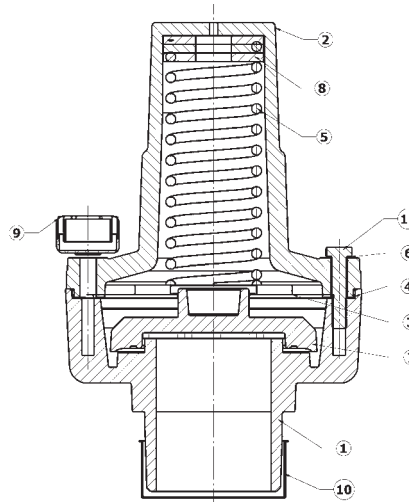
Disassembly, tampering or modifications will void the product warranty and could result in personal injury or death and extensive property damage.

2182 "High Flow" Series 2" Air Relief Valves

models 2182 and A2182

Bill of Materials

Item #	Description	Qty
1	Vent cowl	1
2	Top body	1
3	Valve seat	1
4	Diaphragm	1
5	Spring	1
6	Lock washer	4
7	Valve plate	1
8	Spacer	-
9	Cup seal	1
10	Cap	1
11	Body bolt	4



Important Note !

Only 15 PSI and 18 PSI repair kits are available (below), all valves of other pressure settings must be returned to Dixon Bayco for rebuilding.



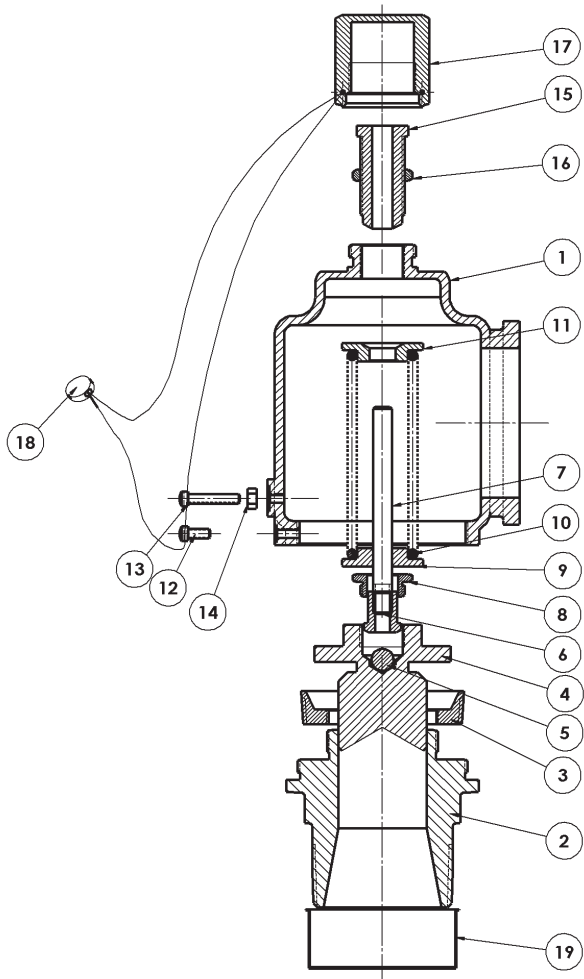
The detailed instructions enclosed with each repair kit must be followed. Failure to comply with these instructions including disassembly, tampering or modifications using processes and parts not described in these instructions or supplied with this rebuild kit will void the product warranty and could result in personal injury or death and extensive property damage.

Repair Kits

Part #	Description	includes item #s
2182RK-15	2182-15 repair kit, 15 PSI spring (+2/-0 PSI tolerance), spring seat, diaphragm, valve plate, bolts, lockwashers, tamper proof seal, & valve label	3, 4, 5, 6, 7, 9, 11
2182RK-15A	A2182-15 repair kit, 15 PSI spring (+1/-1 PSI tolerance), spring seat, diaphragm, valve plate, bolts, lockwashers, tamper proof seal, & valve label	3, 4, 5, 6, 7, 9, 11
2182RK-18	2182-18 repair kit, 18 PSI spring (+2/-0 PSI tolerance), spring seat, diaphragm, valve plate, bolts, lockwashers, tamper proof seal, & valve label	3, 4, 5, 6, 7, 9, 11
2182RK-18A	A2182-18 repair kit, 18 PSI spring (+1/-1 PSI tolerance), spring seat, diaphragm, valve plate, bolts, lockwashers, tamper proof seal, & valve label	3, 4, 5, 6, 7, 9, 11

Repair kits fit the "2182 series" relief valves with female NPT, male NPT, victaulic groove, and cam & groove adapter ends.

2215 Series 2" Air Relief Valve



Bill of Materials

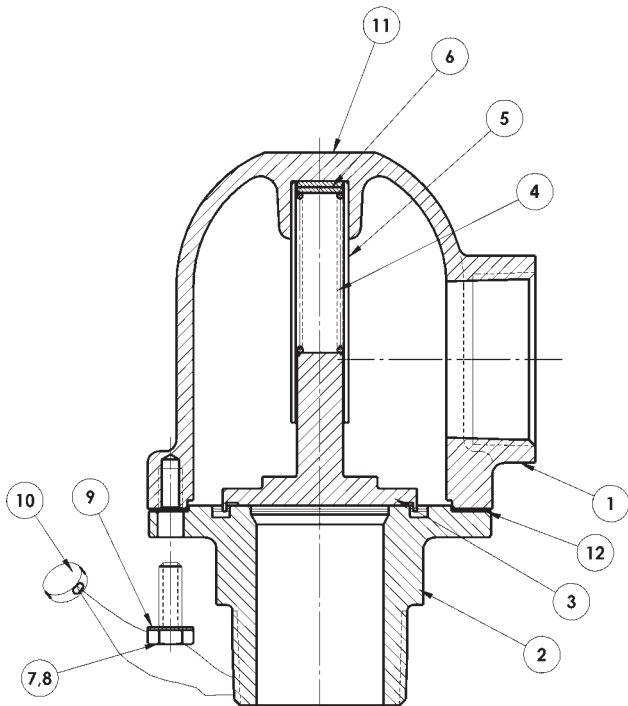
Item #	Description	Qty
1	Body	1
2	Base	1
3	Valve ring	1
4	Valve	1
5	Valve bearing	1
6	Rod end	1
7	Rod	1
8	Valve nut	1
9	Spring bottom washer	1
10	Spring	1
11	Spring top washer	1
12	Short lock screw	1
13	Screw	1
14	Lock screw nut	1
15	Adjuster	1
16	Adjuster nut	1
17	Cap	1
18	Seal	1
19	Thread cap	1

Important Note !

Repair kits are not available. All "2215" relief valves must be returned to Dixon Bayco for rebuilding.

SAFETY ALERT Disassembly, tampering or modifications will void the product warranty and could result in personal injury or death and extensive property damage.

1120 Series 1½" Vacuum Relief Valve



Bill of Materials

Item #	Description	Qty
1	Cover	1
2	Bottom	1
3	Valve	1
4	Spring	1
5	Stem guide	1
6	Spacer	2
7	Drilled screw	2
8	Screw	2
9	Lock washer	4
10	Cup seal	1
11	Label	1
12	Gasket	1

Important Note !

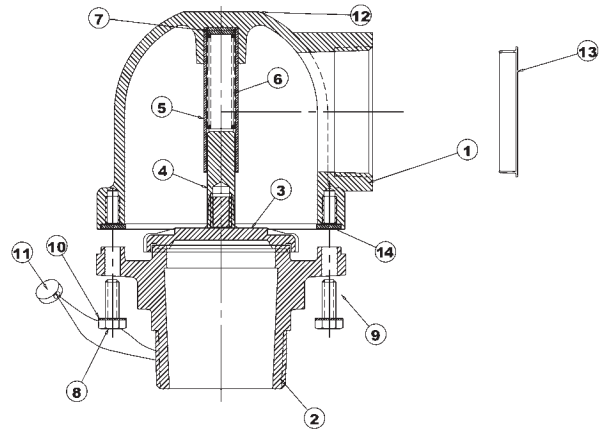
Repair kits are not available. All "1120" relief valves must be returned to Dixon Bayco for rebuilding.

SAFETY ALERT Disassembly, tampering or modifications will void the product warranty and could result in personal injury or death and extensive property damage.

2120 Series 2" Vacuum Relief Valve

Bill of Materials

Item #	Description	Qty
1	Cover	1
2	Bottom	1
3	Valve	1
4	Valve stem	1
5	Valve guide	1
6	Spring	1
7	Set washer	2
8	Drilled screw	2
9	Screw	2
10	Lock washer	4
11	Cup seal	1
12	Label	1
13	Thread plug	1
14	Gasket	1



Important Note !

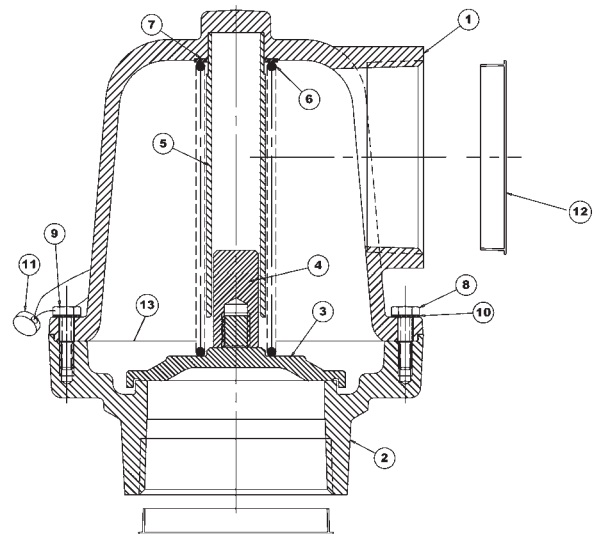
Repair kits are not available. All "2120" relief valves must be returned to Dixon Bayco for rebuilding.

SAFETY ALERT Disassembly, tampering or modifications will void the product warranty and could result in personal injury or death and extensive property damage.

3120 Series 3" Vacuum Relief Valve

Bill of Materials

Item #	Description	Qty
1	Top cover	1
2	Bottom body	1
3	Valve	1
4	Valve stem	1
5	Stem guide	1
6	Spring	1
7	Set washer	3
8	Screw	4
9	Drilled screw	2
10	Lock washer	6
11	Cup seal	1
12	Thread plug	2
13	Gasket	1



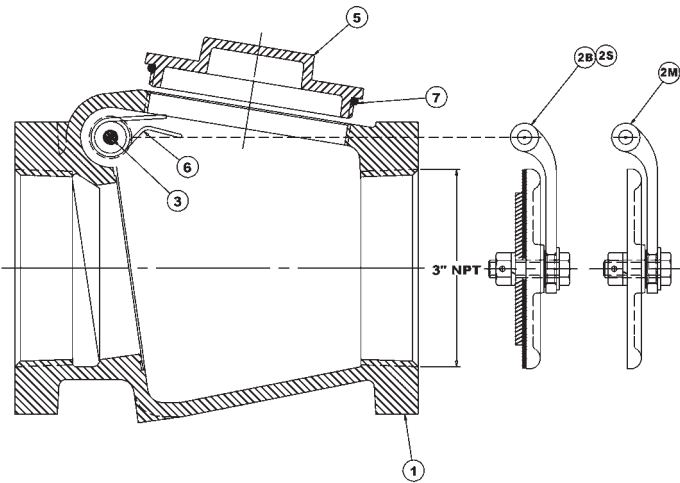
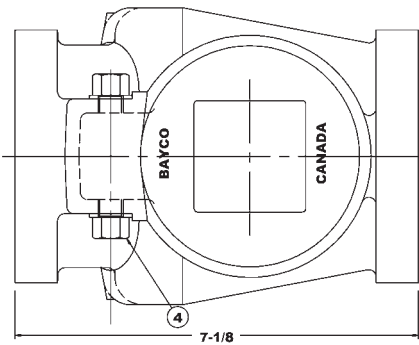
Important Note !

Repair kits are not available. All "3120" relief valves must be returned to Dixon Bayco for rebuilding.

SAFETY ALERT Disassembly, tampering or modifications will void the product warranty and could result in personal injury or death and extensive property damage.

Bayco Classic 3000 Series 3" Swing Check Valves

"3000" Threaded & "3001" Square Flange units



Bill of Materials

Item #	Description	Part #	Qty
1	Swing check body	-	1
2M	Valve flapper assembly with metal seal	use kit 300-SPK	1
2B	Valve flapper assembly with Buna seal	use kit 300-BSPK	1
2S	Valve flapper assembly with Silicone seal	use kit 300-SSPK	1
3	Shaft	3000-4	1
4	Shaft nut	3000-5	2
5	Clean out cap	363000-10	1
6	Spring (for units with spring return flapper)	SPRG/L4603	1
7	Clean out cap O-ring seal	O-RINGAS238	1

Replacement Parts

Repair Kits

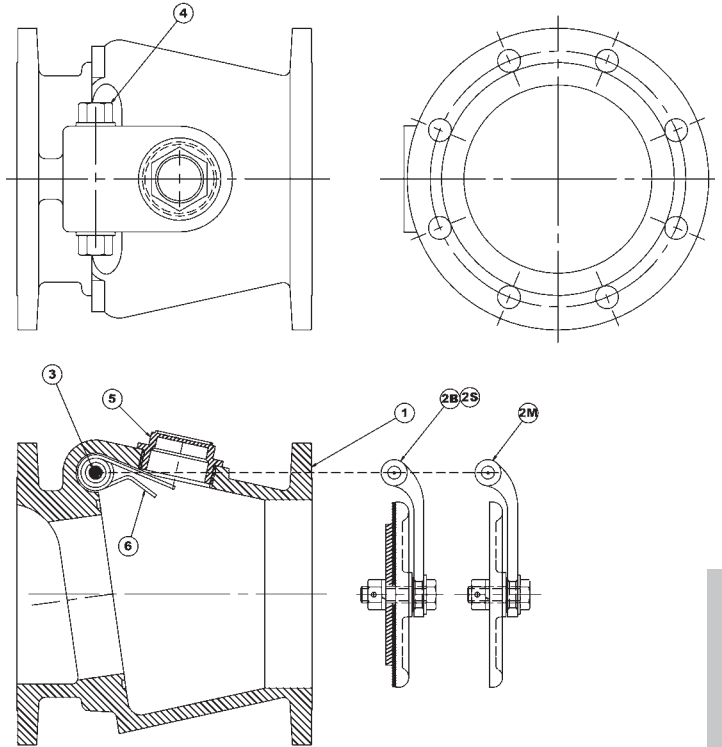
Part #	Description	includes item #s
300-SSPK	Silicone seal flapper assembly, shaft, nuts, flapper spring and clean out cap O-ring seal	2S, 3, 4, 6, 7
300-SK	Silicone seal flapper assembly, shaft, nuts and clean out cap O-ring seal	2S, 3, 4, 7
300-BSPK	Buna seal flapper assembly, shaft, nuts, flapper spring and clean out cap O-ring seal	2B, 3, 4, 6, 7
300-BK	Buna seal flapper assembly, shaft, nuts and clean out cap O-ring seal	2B, 3, 4, 7
300-SPK	Metal seal flapper assembly, shaft, nuts, flapper spring and clean out cap O-ring seal	2M, 3, 4, 6, 7
300-K	Metal seal flapper assembly, shaft, nuts and clean out cap O-ring seal	2M, 3, 4, 7

Bayco Classic 3000 Series 3" Swing Check Valves

"3000" Round Flange units

Bill of Materials

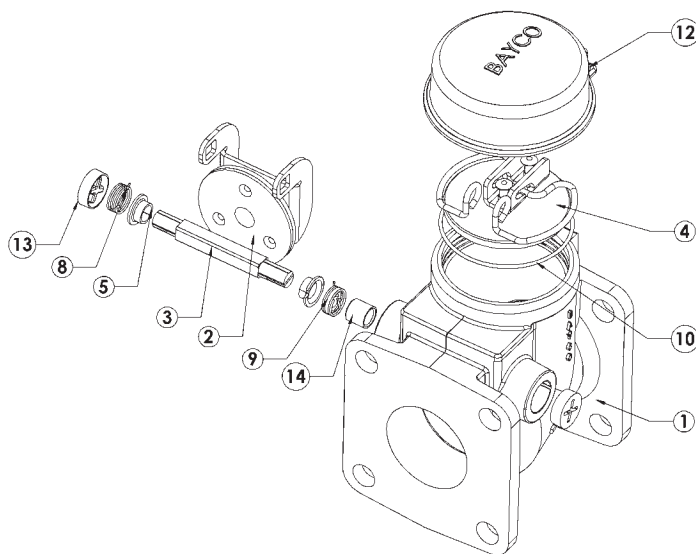
Item #	Description	Part #	Qty
1	Swing check body	-	1
2M	Valve flapper assembly with metal seal	use kit 300-SPK	
2B	Valve flapper assembly with Buna seal	use kit 300-BSPK	1
2S	Valve flapper assembly with Silicone seal	use kit 300-SSPK	
3	Shaft	3000-4	1
4	Shaft nut	3000-5	
5	Clean out cap	3000CAP	1
6	Spring (for units with spring return flapper)	SPRG/L4603	



Repair Kits

Part #	Description	includes item #s
300-SSPK	Silicone seal flapper assembly, shaft, nuts & flapper spring	2S, 3, 4, 6
300-SK	Silicone seal flapper assembly, shaft, & nuts	2S, 3, 4
300-BSPK	Buna seal flapper assembly, shaft, nuts & flapper spring	2B, 3, 4, 6
300-BK	Buna seal flapper assembly, shaft & nuts	2B, 3, 4
300-SPK	Metal seal flapper assembly, shaft, nuts, & flapper spring	2M, 3, 4, 6
300-K	Metal seal flapper assembly, shaft & nuts	2M, 3, 4

Bayco "High Flow" 3020 Series 2" Swing Check Valves



Bill of Materials

Item #	Description	Part #	Qty
1	Swing check body	-	1
2	Valve flapper assembly, white EPDM	use kit 3020FA	1
3	Shaft	390777	1
4	Cover plate & retaining ring	use kit 3020CS	1
5	Shaft bearing	111321	2
6	Right spring	111324	1
7	Left spring	111325	1
8	Cover O-ring	111236	1
9	Cap	3020C	1
10	Threaded shaft plug	111443	2
11	Shaft bushing	390784	2
**	Flange close clearance nuts (2 provided with 3020SQ, due to close clearance between flange and body)	111485	2

** not illustrated

Replacement Parts

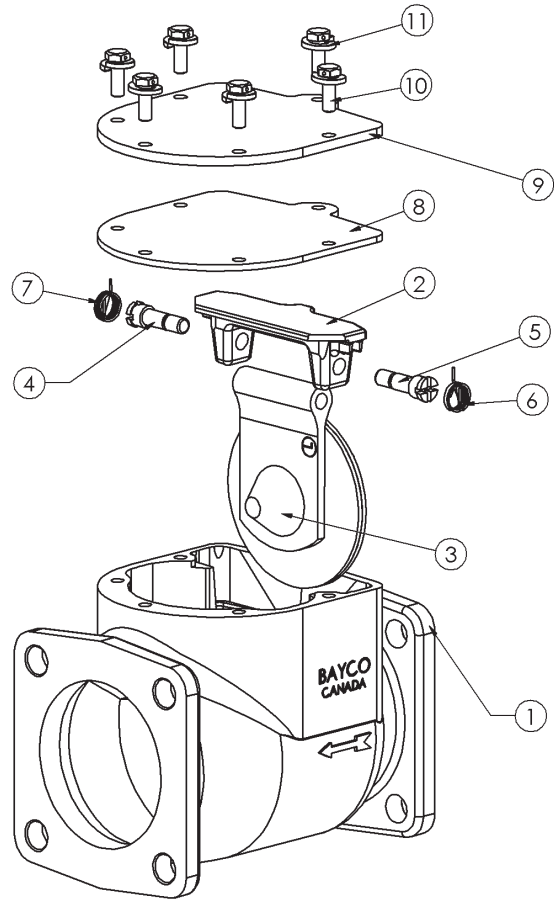
Repair Kits

Part #	Description	includes item #s
3020CS	Top cover plate kit, cover plate, spring clip assembly & O-ring seal	4, 8
3020FA	Replacement white EPDM flapper kit, flapper assembly, shaft, shaft bearings, springs & shaft plugs	2, 3, 5, 6, 7, 10

Bayco "High Flow" 3030 Series 3" Swing Check Valves Round Flange, Square Flange, Threaded & Victaulic Groove Ends

Bill of Materials

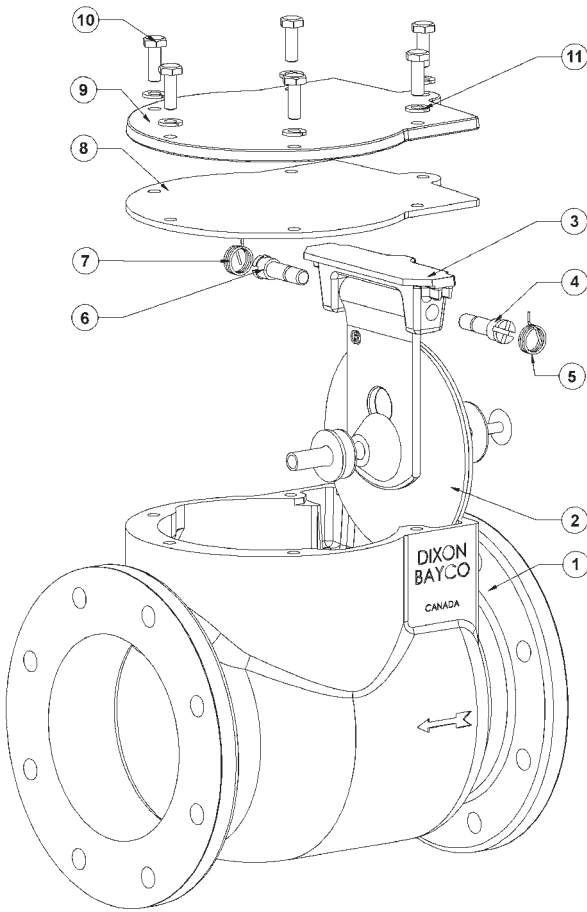
Item #	Description	Part #	Qty
1	Swing check body	-	1
2	Flapper valve yoke	341595	1
3A	Valve flapper assembly with white EPDM	use kit 3030RK1	1
3B	Valve flapper assembly with orange Silicone	use kit 3090RK3	1
3C	Valve flapper assembly with metal seal	use kit 3091RK2	1
4	Right hand shaft	390798	1
5	Left hand shaft	390799	1
6	Left hand spring	use kit 3030RK3	1
7	Right hand spring	use kit 3030RK3	1
8	Cover gasket	111932	1
9	Cover	341611	1
10	Bolt	use kit 3030HK	6
11	Lock washer	use kit 3030HK	6



Repair Kits

Part #	Description	includes item #s
3030RK1	Replacement white EPDM flapper kit, flapper assembly, yoke, springs, shafts, cover gasket (for 3030RD, 3030SQ, 3030TE & 3030VIC)	2, 3A, 4, 5, 6, 7, 8
3090RK3	Replacement orange Silicone flapper kit, flapper assembly, yoke, springs, shafts, cover gasket (for 3030RD-SSP, 3030SQ-SSP, 3030TE-SSP & 3030VIC-SSP)	2, 3B, 4, 5, 6, 7, 8
3091RK2	Replacement metal seal flapper kit, flapper assembly, yoke, springs, shafts, cover gasket (for 3031RD, 3031SQ, 3031TE & 3031VIC)	2, 3C, 4, 5, 6, 7, 8
3030RK2	Complete rebuild kit kit, white EPDM flapper assembly, yoke, springs, shafts, cover gasket, bolts & lock washers (for 3030RD, 3030SQ, 3030TE & 3030VIC)	2, 3A, 4, 5, 6, 7, 8, 10, 11
3090RK2	Complete rebuild kit kit, orange Silicone flapper assembly, yoke, springs, shafts, cover gasket, bolts & lock washers (for 3030RD-SSP, 3030SQ-SSP, 3030TE-SSP & 3030VIC-SSP)	2, 3B, 4, 5, 6, 7, 8, 10, 11
3091RK1	Complete rebuild kit kit, metal seat flapper assembly, yoke, springs, shafts, cover gasket, bolts & lock washers (for 3031RD, 3031SQ, 3031TE & 3031VIC)	2, 3C, 4, 5, 6, 7, 8, 10, 11
3030HK	Replacement bolts & lock washers	10, 11
3030RK3	Replacement left and right springs	6, 7
3030SK	Optional: 2 drilled bolts (similar to item 10) with wire "tamper resistant" seal	not illustrated

Bayco "High Flow" 4040 Series 4" Swing Check Valves Round Flange and Threaded Units



Bill of Materials

Item #	Description	Part #	Qty
1	Swing check body	-	1
2A	Valve flapper assembly white EPDM (4040RD & 4040TE)	use kit 4040RK1	1
2B	Valve flapper assembly metal seal (4041RD & 4041TE)	use kit 4041RK2	1
2C	Valve flapper assembly orange Silicone (4042RD & 4042TE)	use kit 4042RK2	1
3	Flapper valve yoke	341595	1
4A	Left hand shaft (4040RD & 4040TE)	390799	1
4B	Left hand shaft (4041RD, 4042RD, 4041TE, 4042TE)	390846	1
5A	Left hand spring (4040RD & 4040TE)	use kit 3030RK3	1
5B	Left hand spring (4041RD, 4042RD, 4041TE & 4042TE)	use kit 4041RK3	1
6A	Right hand shaft (4040RD & 4040TE)	390798	1
6B	Right hand shaft (4041RD, 4042RD, 4041TE & 4042TE)	390847	1
7A	Right hand spring (4040RD & 4040TE)	use kit 3030RK3	1
7B	Right hand spring (4041RD, 4042RD, 4041TE & 4042TE)	use kit 4041RK3	1
8	Cover gasket	111215	1
9	Cover	340039	1
10	Bolt	use kit 3030HK	6
11	Lock washer	use kit 3030HK	6

SAFETY ALERT The smaller torsion springs will not return the flappers contained in the 4041RK1, 4041RK2, 4042RK1 & 4042RK2 kits to a fully closed position if the valve is mounted vertically or upside down. Ensure that these mounting positions are avoided if the smaller springs are used with the 4041RK1, 4041RK2, 4042RK1 & 4042RK2 kits.

Repair Kits

Part #	Description	includes item #s
4040RK1	Replacement white EPDM flapper kit, flapper assembly, yoke, springs, shafts, cover gasket (for 4040RD & 4040TE)	2A, 3, 4A, 5A, 6A, 7A, 8
4041RK2 *	Replacement metal seal flapper kit, flapper assembly, yoke, springs, shafts, cover gasket (for 4041RD & 4041TE)	2B, 3, 4B, 5B, 6B, 7B, 8
4042RK2 *	Replacement orange Silicone flapper kit, flapper assembly, yoke, springs, shafts, cover gasket (for 4042RD & 4042TE)	2C, 3, 4A, 5A, 6A, 7A, 8
4040RK2	Complete rebuild kit kit, white EPDM flapper assembly, yoke, springs, shafts, cover gasket, bolts & lock washers (for 4040RD & 4040TE)	2A, 3, 4A, 5A, 6A, 7A, 8, 10, 11
4041RK1 *	Complete rebuild kit kit, metal seat flapper assembly, yoke, springs, shafts, cover gasket, bolts & lock washers (for 4041RD & 4041TE)	2B, 3, 4B, 5B, 6B, 7B, 8, 10, 11
4042RK1 *	Complete rebuild kit kit, orange Silicone flapper assembly, yoke, springs, shafts, cover gasket, bolts & lock washers (for 4042RD & 4042TE)	2C, 3, 4A, 5A, 6A, 7A, 8, 10, 11
3030HK	Replacement bolts & lock washers	10, 11
3030RK3	Replacement left and right springs (for 4040RD & 4040TE)	5A, 7A
4041RK3	Replacement left and right springs (for 4041RD, 4041TE, 4042RD & 4042TE)	5B, 7B
3030SK	Optional: 2 drilled bolts (similar to item 10) with wire "tamper resistant" seal	not illustrated

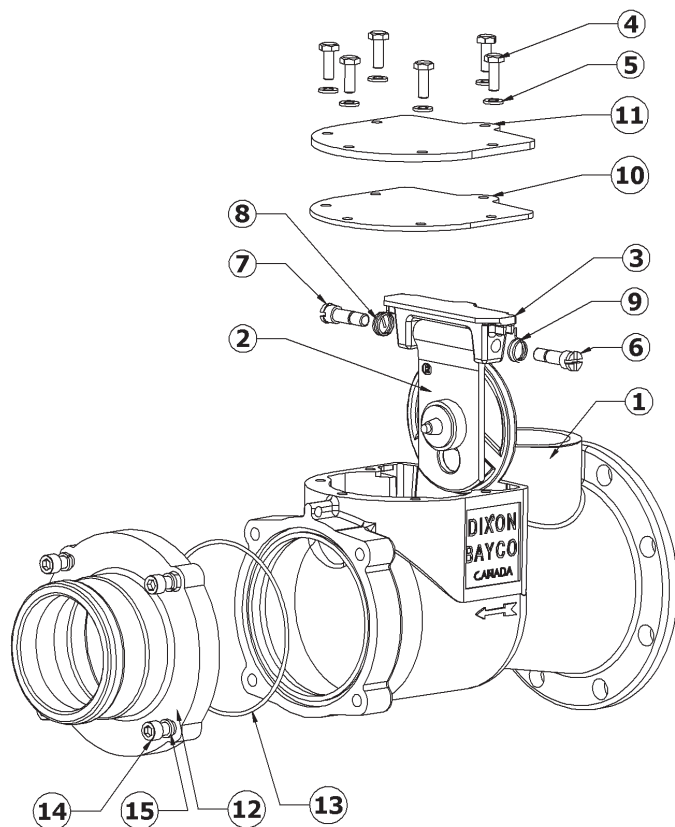
*** Important Note !**

Kits 4041RK1, 4041RK2, 4042RK1 & 4042RK2 contain 2 sets of shafts and springs. Swing check valves manufactured after March 2007 should use the larger axial shafts and larger torsion springs. Swing check valves manufactured prior to March 2007 will require the use of the shorter axial shafts and the smaller torsion springs.

Bayco "High Flow" 3090 Series Swing Check Manifold Valves Round Flange x Adapter, Round Flange x 4" FNPT

Bill of Materials

Item #	Description	Part #	Qty
1	Swing check manifold body	-	1
2A	Valve flapper assembly orange Silicone (3090M, 3090MA, 3090MB & 3090F)	use kit 3090RK3	1
2B	Valve flapper assembly metal seal (3091MA)	use kit 3091RK2	1
3	Flapper Valve Yoke	341595	1
4	Bolt	use kit 3030HK	6
5	Lock washer	use kit 3030HK	6
6	Left hand shaft	390799	1
7	Right hand shaft	390798	1
8	Right hand spring	use kit 3030RK3	1
9	Left hand spring	use kit 3030RK3	1
10	Cover gasket	111932	1
11	Cover	341611	1
12A	3" Adapter outlet (for 3090MA, 3090MAS & 3091MA)	340277	1
12B	4" Adapter outlet (for 3090MB, & 3090MBS)	341202	1
12C	4" FNPT Outlet (for 3090F)	6000-20	1
13	Adapter outlet O-ring	3090RK1	1
14	Adapter outlet hex bolt	use kit 6000NPHK	4
15	Adapter outlet Lock washer	use kit 6000NPHK	4



Repair Kits

Part #	Description	includes item #s
3090RK3	Replacement orange Silicone flapper kit, flapper assembly, yoke, springs, shafts, cover gasket (for 3090M, 3090MA, 3090MB & 3090F)	2A, 3, 6, 7, 8, 9, 10
3091RK2	Replacement metal seal flapper kit, flapper assembly, yoke, springs, shafts, cover gasket (for 3091MA)	2B, 3, 6, 7, 8, 9, 10
3090RK2	Complete rebuild kit kit, orange Silicone flapper assembly, yoke, springs, shafts, cover gasket, bolts & lock washers (for 3090M, 3090MA, 3090MB & 3090F)	2A, 3, 4, 5, 6, 7, 8, 9, 10
3091RK1	Complete rebuild kit kit, metal seat flapper assembly, yoke, springs, shafts, cover gasket, bolts & lock washers (for 3091MA)	2B, 3, 4, 5, 6, 7, 8, 9, 10
3030HK	Replacement cover bolts & lock washers	4, 5
3030RK3	Replacement left and right springs	8, 9
3030SK	Optional: 2 drilled bolts (similar to item 4) with wire "tamper resistant" seal	not illustrated
6000NPHK	Outlet bolts and lock washers	14, 15

Part Number	Page #	Part Number	Page #	Part Number	Page #	Part Number	Page #
100-AL-SS	15	3/8 RETAINERBOLT	12	3030SQ	8	3-400-3501	10
100-DL-SS	15	3/8 T-BOLT	12	3030SQ-SSP	8	340039	28
10-400-1500	10	3000-4	24, 25	3030TE	8	3-400-422209F	10
10-400-4222370	10	3000-5	24, 25	3030TE-SSP	8	3-400-422237F	10
10-400-422500	10	3000B	9	3031RD	8	3-400-422240	11
110977	7	3000BSP	9	3031SQ	8	3-400-422500	10
110978	7	3000CAP	25	3031TE	8	3-400-422501	10
111111	13	3000N	9	3040ALT-AL	15	3-400-422501	11
111131	13	3000S	9	3040DLT-AL	15	340277	29
111141	13	3000SP	9	3090F	9	341595	28
111161	13	3000SSP	9	3090M	9	341595	28
111215	28	3000TE	9	3090MA	9	341595	29
111236	26	3000TEB	9	3090MA-DC	9	341598	27
111321	26	3000TEBSP	9	3090MAS	9	341611	27
111324	26	3000TES	9	3090MA-W	9	3533AA	7
111325	26	3000TESP	9	3090MB	9	3533CA	7
111443	26	3000TESSP	9	3090MBS	9	3533CC	7
111932	27	3001SQB	9	3090MS	9	3534AA	7
111932	29	3001SQBSP	9	3090RK1	27, 59	3534CA	7
1120/xx	4	3001SQN	9	3090RK2	27, 29	3543CA	7
113111	13	3001SQS	9	3091MA	9	3543CC	7
113131	13	3001SQSP	9	3091MB	9	3544AA	7
150-AL-SS	15	3001SQSSP	9	3091RK1	27, 29	3544CA	7
150-DL-SS	15	300-AL-AL	15	31025600DOT	16	3544CC	7
		300-AL-MI	15	31026000DOT	16	36 3000-10	24
200-AL-AL	15	300-AL-SS	15	31035614DOT	17	390784	26
200-AL-SS	15	300-ALT-AL	15	31035618DOT	17	390798	27
200-DL-SS	15	300-ALT-SS	15	31036014DOT	17	390799	28
206-23-5	11	300-BK	24, 25	31036018DOT	17		
206-46-5	11	300-BSPK	24, 25	31045600DOT	16	400-206-65	11
2120/xx	4	300-DL-AL	15	31046000DOT	16	40022ALTAL	15
2180/xx	3	300-DL-SS	15	31065600DOT	16	40022DLTAL	15
2180B/xx	3	300-DLT-AL	15	31066000DOT	16	400-237-610	11
2180RK15	20	300GDBSQCB	7	31085614DOT	17	400-AL-AL	15
2180RK18	20	300GDBSQE	7	31085618DOT	17	400-AL-SS	15
2180V/xx	3	300GDBSQK	7	31086014DOT	17	400-ALT-AL	15
2182/xx	3	300GTTFCB	7	31086018DOT	17	400-ALT-SS	15
2182B/xx	3	300GTTFK	7	31095614DOT	17	400-AS-AL	15
2182F/xx	3	300GTTFTK	7	31095618DOT	17	400-DL-AL	15
2182RK15	4, 21	300-K	24, 25	31096014DOT	17	400-DL-SS	15
2182RK18	4, 21	300-SK	24, 25	31096018DOT	17	400-DLT-AL	15
2182V/xx	3	300-SPK	24, 25	31145614DOT	17	400GTTFCB	7
2215/xx	4	300-SSPK	24, 25	31146018DOT	17	400GTTFK	7
2-3-213	11	3020C	26	31155614DOT	17	400GTTFTK	7
2-3-400-99-BPKIT	11	3020CS	26	31155618DOT	17	40321TF	7
237-23-10	11	3020FA	26	31156014DOT	17	40322TF	7
237-46-10	11	3020SQ	8	31156018DOT	17	40323TF	7
2-400-1500	10	3020TE	8	3120/xx	4	4040RD	8
2-400-422209F	10	3030HK	27 - 29	31405600DOT	16	4040RK1	28
2-400-422237F	10	3030RD	8	31406000DOT	16	4040RK2	28
2-400-422240	11	3030RD-SSP	8	31485614DOT	17	4040TE	8
2-400-422500	10	3030RK1	27	3180/xx	3	4041RK3	28
2-400-422501	10, 11	3030RK2	27	3-390-209F	11	4042RK3	28
		3030RK3	27 - 29	3-390-828501	11	4041RD	8
3/8 INSERT	12	3030SK	9, 27 - 29	3-400-1500	10	4041TE	8

Part Number	Page #	Part Number	Page #	Part Number	Page #	Part Number	Page #
4042RD	8	5-390-828U501	11	8x4BD DOORASBLY	12	DB9000	3
4042TE	8	5-400-1500	10	8x4-BD GASKET	12	DB9001	3
4111	13	5-400-3501	10	8x4-BD TEE	12		
4121	13	5-400-422209U	10	8x4-BD TEE-E	12	GASKET RETAINER	12
4122	13	5-400-422237U	10			GC200	18
4123	13	5-400-422240	11	A2180/xx	3	GC215	18
4124	13	5-400-422500	10	A2180B/xx	3	GC220	18
4125	13	5-400-422501	10, 11	A2180V/xx	3	GC225	18
4126B	13	5-RF	12	A2182/xx	3	GC230	18
4127	13	5x4 WING	12	A2182B/xx	3	GC235	18
4129	13	5x4BD DOORASBLY	12	A2182F/xx	3	GC240	18
4130	13	5x4-BD GASKET	12	A2182V/xx	3	GC605	18
4134	13	5x4-BD TEE	12	A3180/xx	3	GC610	18
4135	13	5x4-BD TEE-E	12	A712	19	GC615	18
4137	13	5x4-S TEE	12	A7125	19	GC620	18
4139	13	5x4-S TEE-E	12	A7125S	19	GC625	18
4149	13	5x4-VRBD TEE	12	A712S	19	GL100	18
4155	13	5x4-VRBD TEE K	12	A713	19	GL105	18
4157	13	5x4-VRST TEE	12	A713S	19	GL115	18
4159	13	5x4-VRST TEE K	12	A714	19	GL120	18
4167	13			A714S	19	GL125	18
4277750-0001	18	600-AL-AL	15	A715	19	GL130	18
4277768-0001	18	600-AL-SS	15	A716	19	GL135	18
4277776-0001	17	600-ALT-AL	15	ADS400	15	GL140	18
4-390-209U	11	600-DL-AL	15	AQ62DOT4	16	GL205	18
4-390-828U501	11	600-DL-SS	15	AQ62DOT6	16	GL305	18
4-400-1500	10	600-DLT-AL	15	AQ64DOT4	16		
4-400-3501	10	6-390-209U	11	AQ64DOT6	16	H315	19
4-400-422209U	10	6-390-393501	11	AQ68DOT4x2	16	H315BU	19
4-400-422237U	10	6-390-828U501	11	AQ68DOT4x4	16	H32	19
4-400-422240	11	6-400-1500	10	AQ68DOT4x6	16	H325	19
4-400-422500	10	6-400-3501	10	AQ68DOT6x4	16	H325BU	19
4-400-422501	10, 11	6-400-422209U	10	AQ68DOT6x6	16	H32BU	19
4443	6	6-400-422237U	10	AQ69DOT4x2	16	H33	19
4-5-6-213	11	6-400-422240	10	AQ69DOT4x4	16	H33BU	19
4621	13	6-400-422500	10	AQ69DOT6x4	16	H34	19
4622	13	6-400-422501	10	AQ69DOTS4x2	16	H34BU	19
4623	13	6400SGK	7	AQ69DOTS4x4	16	H36	19
4-6-400-99-BPKIT	11	6544CA-1	7	AQ69DOTS4x6	16	H36BU	19
4A-400-1500	10	6-99-400BPKIT	11	AQ69DOTS6x4	16		
4A-400-422500	10	6x4 WING	12	AQ69DOTS6x6	16	J844-04-B-100	17
4A-400-422501	10	6x4BD DOORASBLY	12	AQ71DOTS4x2	16	J844-04-BL-100	17
4x4BD DOOR	12	6x4-BD GASKET	12	AQ71DOTS4x4	16	J844-04-R-100	17
4x4BD DOORASBLY	12	6x4-BD TEE	12	AQ72DOTS4x2	16	J844-06-B-100	17
4x4-BD GASKET	12	6x4-BD TEE-E	12	AQ72DOTS4x4	16	J844-06-BL-100	17
4x4-BD TEE	12	6x4-S TEE	12	AVN2000-200	19	J844-06-R-100	17
4x4-BD TEE-E	12	6x4-S TEE-E	12	AVN2500-200	19		
4x4-S TEE	12			AVN3000-200	19	O-RING-AS-238	24, 25
4x4-S TEE-E	12	800-AL-AL	15	AVN4000-200	19		
		800-DL-AL	15			PC5000	5
5/6BD DOOR	12	8-400-1500	10	BD BOLTS	12	PC5000AA	5
5012	13	8-400-4222370	10	BD WINGNUT	12	PC5000TTTE	5
5050	13	8-400-422500	10			PC5000VV	5
5052	13	8x4 WING	12	CAL15	4	PC5001	5
5-390-209U	11	8x4BD DOOR	12	CAL25	4	PC5003	5

Part Number	Page #	Part Number	Page #	Part Number	Page #	Part Number	Page #
PC5004.....	5						
PC5005.....	5						
PC5006.....	5						
PC5007.....	5						
RDL100EZ.....	15						
RDL150EZ.....	15						
RDL200EZ.....	15						
RDL300EZ.....	15						
RDL400EZ.....	15						
RDL600EZ.....	15						
SC5-16-18x2.75P.....	7						
SPRING/L4603.....	24, 25						
TDF6.....	6						
TDF7.....	6						
TDF8.....	6						
TTF3AL.....	6						
TTF3AL-3MT.....	6						
TTF4AL.....	6						
TTF4AL-3EMT.....	6						
TTF4AL-3FT.....	6						
TTF4AL-3MT.....	6						
TTF4AL-4EMT.....	6						
TTF4AL-4FT.....	6						
TTF4AL-4MT.....	6						
TTF4ALHC-3MT.....	6						
TTF4ALHC-4MT.....	6						
VN2000-200.....	19						
VN2500-200.....	19						
VN3000-200.....	19						
VN4000-200.....	19						
VNR2000-200.....	19						
VNR2500-200.....	19						
VNR3000-200.....	19						
VNR4000-200.....	19						

LIMITED WARRANTY

Dixon Bayco, (herein called "Dixon") warrants the products described herein, and manufactured by Dixon to be free from defects in material and workmanship for a period of one (1) year from date of shipment by Dixon under normal use and service. It's sole obligation under this warranty being limited to repairing or replacing, as hereinafter provided, at its option any product found to Dixon's satisfaction to be defective upon examination by it, provided that such product shall be returned for inspection to Dixon's factory within three (3) months after discovery of the defect. The repair or replacement of defective products will be made without charge for parts or labor. This warranty shall not apply to: (a) parts or products not manufactured by Dixon, the warranty of such items being limited to the actual warranty extended to Dixon by its supplier; (b) any product that has been subject to abuse, negligence, accident, or misapplication; (c) any product altered or repaired by others than Dixon; and (d) to normal maintenance services and the replacement of service items (such as washers, gaskets and lubricants) made in connection with such services. To the extent permitted by law, this limited warranty shall extend only to the buyer and any other person reasonably expected to use or consume the goods who is injured in person by any breach of the warranty. No action may be brought against Dixon for an alleged breach of warranty unless such action is instituted within one (1) year from the date the cause of action accrues. This limited warranty shall be construed and enforced to the fullest extent allowable by applicable law.

OTHER THAN THE OBLIGATION OF DIXON SET FORTH HEREIN, DIXON DISCLAIMS ALL WARRANTIES, EXPRESS OR IMPLIED, INCLUDING BUT NOT LIMITED TO ANY IMPLIED WARRANTIES OF MERCHANTABILITY OR FITNESS FOR A PARTICULAR PURPOSE, AND ANY OTHER OBLIGATION OR LIABILITY. THE FOREGOING CONSTITUTES DIXON'S SOLE OBLIGATION WITH RESPECT TO DAMAGES, WHETHER DIRECT, INCIDENTAL OR CONSEQUENTIAL, RESULTING FROM THE USE OR PERFORMANCE OF THE PRODUCT.

Some Products and Sizes May Be Discontinued When Stock Is Depleted, Or May Require A Minimum Quantity For Ordering.