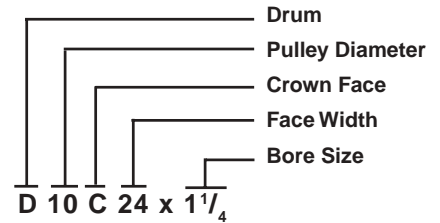


### Part Number Example



VAN GORP® Finished Bore Conveyor Pulleys are designed to meet the demands for all types of package handling conveyor service including mail handling, bag handling and various warehousing requirements. They are constructed of Steel Tubing mechanically expanded to insure a true crown, with end discs continuously welded to rims to exclude foreign material. Straight Face Pulleys are also available; Crown Face supplied unless otherwise specified.

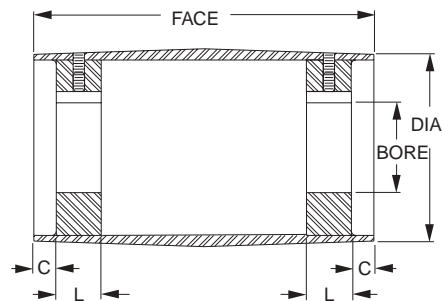
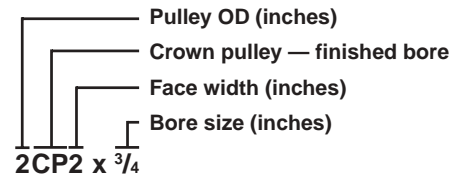
**Table No. 27 — Standard Sizes and Weights**

Pulley Dia.	Face Width - Average Weight in Pounds									
	6"	8"	10"	12"	14"	16"	18"	20"	22"	24"
4"	4	5	6	6	7	7	8	8	9	10
5	8	9	10	11	12	13	14	15	16	17
6	9	11	12	13	14	16	17	18	19	21
8	17	19	21	22	24	26	28	30	32	34
10	24	27	29	32	34	36	39	41	43	45

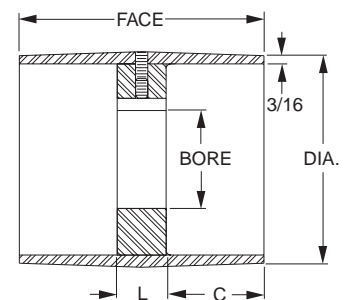
Pulley Dia.	Face Width - Average Weight in Pounds									
	26"	28"	30"	32"	34"	36"	38"	40"	42"	44"
4"	10	11	12	12	13	13	14	14	15	15
5	18	19	20	21	22	23	25	26	27	28
6	22	23	24	26	27	28	29	31	32	33
8	36	38	40	42	43	45	47	49	51	53
10	48	51	53	55	58	60	63	65	67	70

## Stock Machined Crowned Conveyor Pulleys

### — Finished Bore



Type 2



Type 1

**Table No. 28 — Specifications**

Part No.	Type	Stock Bore Marked "X"			Dimensions				Wt.-Lbs.
		3/8	3/4	1	Dia.	Face	L	C	
2CP2	1	X	X	-	2"	2"	1"	7/16"	1.5
2CP3	1	X	X	-	2	3	1	15/16	1.7
2CP4	1	X	X	X	2	4	1	1 7/16	1.9
3CP2	1	X	X	-	3	2	1	7/16	2.4
3CP3	1	X	X	X	3	3	1	15/16	2.7
3CP4	1	X	X	X	3	4	1	1 7/16	3.0
3CP5	2	X	X	X	3	5	1	1/2	4.3

**Table No. 29 Standard Keyseats**

Bore Range	Keyseat
5/8" - 7/8"	3/16" x 3/32"
15/16 - 1	1/4 x 1/8