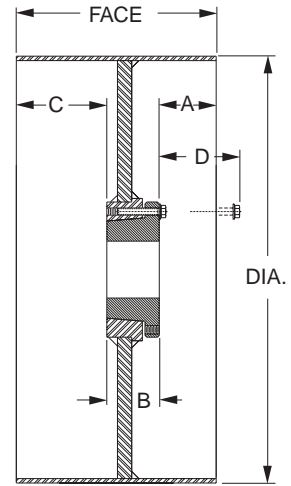
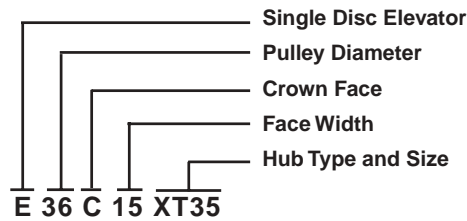


### Part Number Example



With continuously welded disc-to-rim construction and compression type hubs, VAN GORP has turned the weak link in most elevator conveyor systems into the strong point. Now, you get a super strength, one piece, single disc steel elevator pulley, superior to any other on the market today.

Here's why: with a VAN GORP® Pulley, you get a stronger, heavy-duty component...with high compression hub and bushing. (The XT® hub and bushing was selected because XT® holding power is unequalled in pulley applications...and "pulley walking" on the shaft IS NOT a common problem with this hub design.) Intermittent welding of the disc to the rim is common in most elevator pulleys. However, at VAN GORP, we continuously weld the disc to the rim. Plus, the leading and trailing edges of the rim are formed before rolling. This forming process minimizes the rim seam's flat spot.

**Table No. 23 — Bushing Location Dimensions**

Dia.	Bushing	8" Face Width Dimensions				9" Face Width Dimensions				11" Face Width Dimensions				13" Face Width Dimensions				15" Face Width Dimensions				16" Face Width Dimensions			
		A	B	C	D	A	B	C	D	A	B	C	D	A	B	C	D	A	B	C	D	A	B	C	D
16"	XTB20	3 1/32	1 13/32	3 9/16	1 7/16	3 17/32	1 13/32	4 1/8	1 7/16	4 17/32	1 13/32	5 1/16	1 7/16	5 17/32	1 13/32	6 1/16	1 7/16	6 17/32	1 13/32	7 1/16	1 7/16	7 17/32	1 13/32	8 1/16	1 7/16
	XTB25	2 13/16	1 7/8	3 5/16	1 31/32	3 5/16	1 7/8	3 13/16	1 31/32	4 5/16	1 7/8	4 13/16	1 31/32	5 5/16	1 7/8	5 13/16	1 31/32	6 5/16	1 7/8	6 13/16	1 31/32	7 5/16	1 7/8	7 13/16	1 31/32
	XTB30	2 11/16	2 1/16	3 1/4	1 25/32	3 3/16	2 1/16	3 3/4	1 25/32	4 3/16	2 1/16	4 3/4	1 25/32	5 3/16	2 1/16	5 3/4	1 25/32	6 3/16	2 1/16	6 3/4	1 25/32	7 1/16	2 1/16	7 1/4	1 25/32
	XTB35	2 15/32	2 15/32	3 1/16	2 1/16	2 31/32	2 15/32	3 9/16	2 1/16	3 31/32	2 15/32	4 9/16	2 1/16	4 31/32	2 15/32	5 9/16	2 1/16	5 31/32	2 15/32	6 9/16	2 1/16	6 15/32	2 15/32	7 1/16	2 1/16
	XTB40	2 5/16	2 13/16	2 7/8	2 11/32	2 13/16	3 3/8	2 11/32	3 13/16	2 13/16	4 3/8	2 11/32	4 13/16	2 13/16	5 3/8	2 11/32	5 13/16	2 13/16	6 3/8	2 11/32	6 6/16	2 13/16	6 7/8	2 11/32	6 11/16
18	XTB20	3 1/32	1 13/32	3 9/16	1 7/16	3 17/32	1 13/32	4 1/8	1 7/16	4 17/32	1 13/32	5 1/16	1 7/16	5 17/32	1 13/32	6 1/16	1 7/16	6 17/32	1 13/32	7 1/16	1 7/16	7 17/32	1 13/32	8 1/16	1 7/16
	XTB25	2 13/16	1 7/8	3 5/16	1 31/32	3 5/16	1 7/8	3 13/16	1 31/32	4 5/16	1 7/8	4 13/16	1 31/32	5 5/16	1 7/8	5 13/16	1 31/32	6 5/16	1 7/8	6 13/16	1 31/32	7 5/16	1 7/8	7 13/16	1 31/32
	XTB30	2 11/16	2 1/16	3 1/4	1 25/32	3 3/16	2 1/16	3 3/4	1 25/32	4 3/16	2 1/16	4 3/4	1 25/32	5 3/16	2 1/16	5 3/4	1 25/32	6 3/16	2 1/16	6 3/4	1 25/32	7 1/16	2 1/16	7 1/4	1 25/32
	XTB35	2 15/32	2 15/32	3 1/16	2 1/16	2 31/32	2 15/32	3 9/16	2 1/16	3 31/32	2 15/32	4 9/16	2 1/16	4 31/32	2 15/32	5 9/16	2 1/16	5 31/32	2 15/32	6 9/16	2 1/16	6 15/32	2 15/32	7 1/16	2 1/16
	XTB40	2 15/16	2 15/16	2 7/8	2 11/32	2 13/16	3 3/8	2 11/32	3 13/16	2 13/16	4 3/8	2 11/32	4 13/16	2 13/16	5 3/8	2 11/32	5 13/16	2 13/16	6 3/8	2 11/32	6 6/16	2 13/16	6 7/8	2 11/32	6 11/16
20	XTB25	2 25/32	1 7/8	3 11/32	1 31/32	3 9/32	1 7/8	3 27/32	1 31/32	4 9/32	1 7/8	4 27/32	1 31/32	5 9/32	1 7/8	5 27/32	1 31/32	6 6/32	1 7/8	6 27/32	1 31/32	7 6/32	1 7/8	7 11/32	1 31/32
	XTB30	2 21/32	2 1/16	3 9/32	1 25/32	3 5/32	2 1/16	3 25/32	1 25/32	4 5/32	2 1/16	4 25/32	1 25/32	5 5/32	2 1/16	5 25/32	1 25/32	6 5/32	2 1/16	6 25/32	1 25/32	7 5/32	2 1/16	7 9/32	1 25/32
	XTB35	2 7/16	2 15/32	3 3/32	2 1/16	2 15/16	2 15/32	3 19/32	2 1/16	3 15/16	2 15/32	4 19/32	2 1/16	4 15/16	2 15/32	5 19/32	2 1/16	5 15/16	2 15/32	6 19/32	2 1/16	6 15/16	2 15/32	7 3/32	2 1/16
	XTB40	2 9/32	2 13/16	2 29/32	2 11/32	2 25/32	2 13/16	3 13/32	2 11/32	3 25/32	2 13/16	4 13/32	2 11/32	4 25/32	2 13/16	5 13/32	2 11/32	5 25/32	2 13/16	6 13/32	2 11/32	6 25/32	2 13/16	7 1/32	2 11/32
	XTB45	2 1/32	3 5/16	2 21/32	2 5/8	2 17/32	3 5/16	3 5/32	2 5/8	3 17/32	3 5/16	4 5/32	2 5/8	4 17/32	3 5/16	5 5/32	2 5/8	5 17/32	3 5/16	6 5/32	2 5/8	6 17/32	3 5/16	7 1/32	2 5/8
24	XTB30	2 21/32	2 1/16	3 9/32	1 25/32	2 5/32	2 1/16	3 25/32	1 25/32	4 5/32	2 1/16	4 25/32	1 25/32	5 5/32	2 1/16	5 25/32	1 25/32	6 5/32	2 1/16	6 25/32	1 25/32	7 5/32	2 1/16	7 9/32	1 25/32
	XTB35	2 7/16	2 15/32	3 3/32	2 1/16	2 15/16	2 15/32	3 19/32	2 1/16	3 15/16	2 15/32	4 19/32	2 1/16	4 15/16	2 15/32	5 19/32	2 1/16	5 15/16	2 15/32	6 19/32	2 1/16	6 15/16	2 15/32	7 3/32	2 1/16
	XTB40	2 9/32	2 13/16	2 29/32	2 11/32	2 25/32	2 13/16	3 13/32	2 11/32	3 25/32	2 13/16	4 13/32	2 11/32	4 25/32	2 13/16	5 13/32	2 11/32	5 25/32	2 13/16	6 13/32	2 11/32	6 25/32	2 13/16	7 1/32	2 11/32
	XTB45	2 1/32	3 5/16	2 21/32	2 5/8	2 17/32	3 5/16	3 5/32	2 5/8	3 17/32	3 5/16	4 5/32	2 5/8	4 17/32	3 5/16	5 5/32	2 5/8	5 17/32	3 5/16	6 5/32	2 5/8	6 17/32	3 5/16	7 1/32	2 5/8
	XTB50	1 13/16	3 3/4	2 7/16	2 31/32	2 5/16	3 3/4	2 15/16	2 31/32	3 5/16	3 3/4	3 15/16	2 31/32	4 5/16	3 3/4	4 15/16	2 31/32	5 5/16	3 3/4	5 15/16	2 31/32	6 5/16	3 3/4	6 7/16	2 31/32
30	XTB35	2 13/32	2 15/32	3 1/8	2 1/16	2 29/32	2 15/32	3 5/8	2 1/16	3 29/32	2 15/32	4 5/8	2 1/16	4 29/32	2 15/32	5 5/8	2 1/16	5 29/32	2 15/32	6 5/8	2 1/16	6 13/32	2 15/32	7 1/8	2 1/16
	XTB40	2 1/4	2 13/16	2 15/16	2 11/32	2 3/4	2 13/16	3 7/16	2 11/32	3 3/4	2 13/16	4 7/16	2 11/32	4 3/4	2 13/16	5 7/16	2 11/32	5 3/4	2 13/16	6 7/16	2 11/32	6 1/4	2 13/16	6 15/16	2 11/32
	XTB45	2	3 5/16	2 11/16	2 5/8	2 1/2	3 5/16	3 3/16	2 5/8	3 1/2	3 5/16	4 3/16	2 5/8	4 1/2	3 5/16	5 3/16	2 5/8	5 1/2	3 5/16	6 3/16	2 5/8	6	3 5/16	6 11/16	2 5/8
	XTB50	1 13/16	3 3/4	2 7/16	2 31/32	2 5/16	3 3/4	2 15/16	2 31/32	3 5/16	3 3/4	3 15/16	2 31/32	4 5/16	3 3/4	4 15/16	2 31/32	5 5/16	3 3/4	5 15/16	2 31/32	6 5/16	3 3/4	6 7/16	2 31/32
	XTB60	1 9/16	4 1/8	2 5/16	3 1/32	2 1/16	4 1/8	2 13/16	3 1/32	3 1/16	4 1/8	3 13/16	3 1/32	4 1/16	4 1/8	4 13/16	3 1/32	5 1/16	4 1/8	5 13/16	3 1/32	5 9/16	4 1/8	6 5/16	3 1/32
36	XTB35	2 13/32	2 15/32	3 1/8	2 1/16	2 29/32	2 15/32	3 5/8	2 1/16	3 29/32	2 15/32	4 5/8	2 1/16	4 29/32	2 15/32	5 5/8	2 1/16	5 29/32	2 15/32	6 5/8	2 1/16	6 13/32	2 15/32	7 1/8	2 1/16
	XTB40	2 1/4	2 13/16	2 15/16	2 11/32	2 3/4	2 13/16	3 7/16	2 11/32	3 3/4	2 13/16	4 7/16	2 11/32	4 3/4	2 13/16	5 7/16	2 11/32	5 3/4	2 13/16	6 7/16	2 11/32	6 1/4	2 13/16	6 15/16	2 11/32
	XTB45	2	3 5/16	2 11/16	2 5/8	2 1/2	3 5/16	3 3/16	2 5/8	3 1/2	3 5/16	4 3/16	2 5/8	4 1/2	3 5/16	5 3/16	2 5/8	5 1/2	3 5/16	6 3/16	2 5/8	6	3 5/16	6 11/16	2 5/8
	XTB50	1 13/16	3 3/4	2 7/16	2 31/32	2 5/16	3 3/4	2 15/16	2 31/32	3 5/16	3 3/4	3 15/16	2 31/32	4 5/16	3 3/4	4 15/16	2 31/32	5 5/16	3 3/4	5 15/16	2 31/32	6 5/16	3 3/4	6 7/16	2 31/32
	XTB60	1 9/16	4 1/8	2 5/16	3 1/32	2 1/16	4 1/8	2 13/16	3 1/32	3 1/16	4 1/8	3 13/16	3 1/32	4 1/16	4 1/8	4 13/16	3 1/32	5 1/16	4 1/8	5 13/16	3 1/32	5 9/16	4 1/8	6 5/16	3 1/32
42	XTB35	2 13/32	2 15/32	3 1/8	2 1/16	2 29/32	2 15/32	3 5/8	2 1/16	3 29/32	2 15/32	4 5/8	2 1/16	4 29/32	2 15/32	5 5/8	2 1/16	5 29/32	2 15/32	6 5/8	2 1/16	6 13/32	2 15/32	7 1/8	2 1/16
	XTB40	2 1/4	2 13/16	2 15/16	2 11/32	2 3/4	2 13/16	3 7/16	2 11/32	3 3/4	2 13/16	4 7/16	2 11/32	4 3/4	2 13/16	5 7/16	2 11/32	5 3/4	2 13/16	6 7/16	2 11/32	6 1/4	2 13/16	6 15/16	2 11/32
	XTB45	2	3 5/16	2 11/16	2 5/8	2 1/2	3 5/16	3 3/16	2 5/8	3 1/2	3 5/16	4 3/16	2 5/8	4 1/2	3 5/16	5 3/16	2 5/8	5 1/2	3 5/16	6 3/16	2 5/8	6	3 5/16	6 11/16	2 5/8
	XTB50	1 13/16	3 3/4	2 7/16	2 31/32	2 5/16	3 3/4	2 15/16	2 31/32	3 5/16	3 3/4	3 15/16	2 31/32	4 5/16	3 3/4	4 15/16	2 31/32	5 5/16	3 3/4	5 15/16	2 31/32	6 5/16	3 3/4	6 7/16	2 31/32
	XTB60	1 9/16	4 1/8	2 5/16	3 1/32	2 1/16	4 1/8	2 13/16	3 1/32	3 1/16	4 1/8	3 13/16	3 1/32	4 1/16	4 1/8	4 13/16	3 1/32	5 1/16	4 1/8	5 13/16	3 1/32	5 9/16	4 1/8	6 5/16	3 1/32

Contact factory if other hubs required