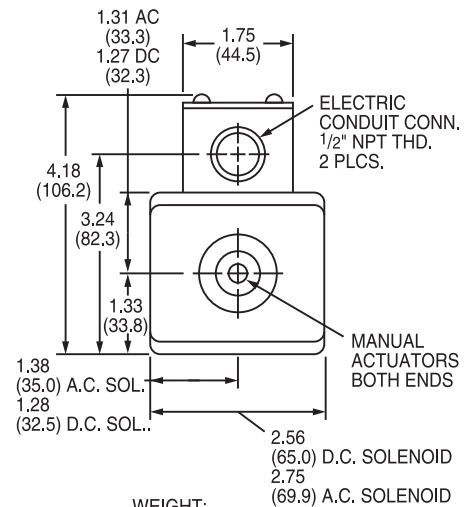
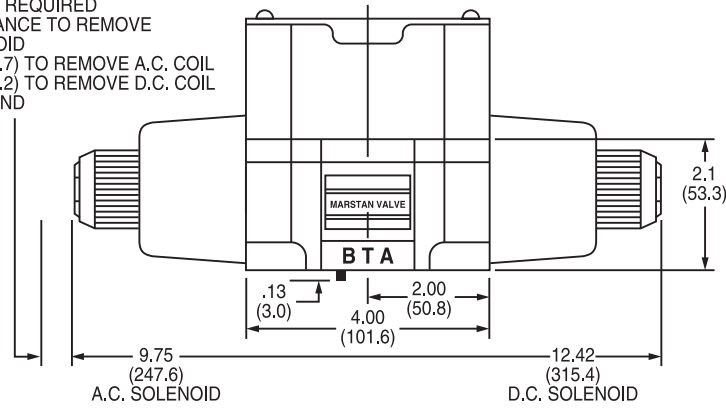


Size 01 (NFPA DO1-DO3)

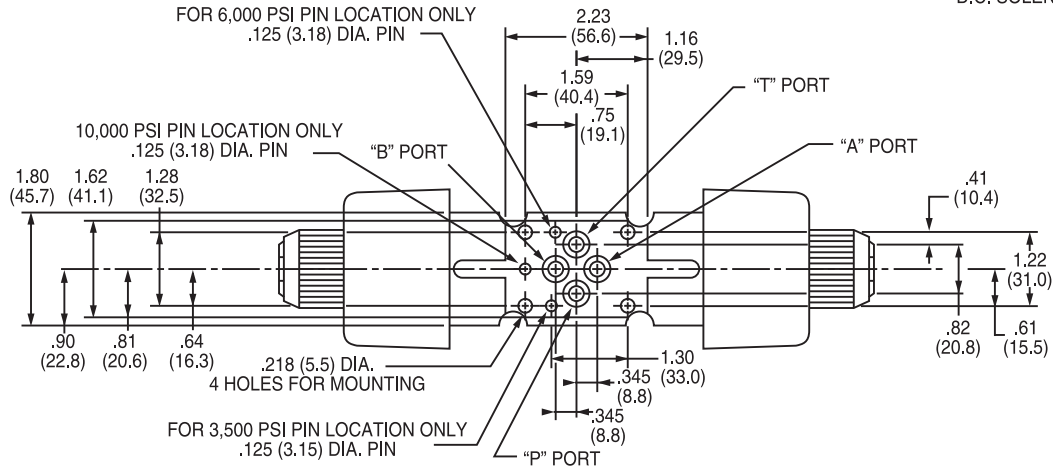
- ◆ 2 or 3 position
- ◆ 3 way or 4 way
- ◆ Subplate mounted
- ◆ 3,500 PSIG (245 bar), 6,000 PSIG (415 bar) and 10,000 PSIG (690 bar) ratings

Double Solenoid Operated

.37 (9.4) REQUIRED CLEARANCE TO REMOVE SOLENOID
 1.80 (45.7) TO REMOVE A.C. COIL
 3.12 (79.2) TO REMOVE D.C. COIL EACH END



WEIGHT:
 A.C. SOLENOID 5.26 LBS.
 D.C. SOLENOID 8.44 LBS.



NOTES:

- 1.) Maximum Subplate Port Dia. .250 (6.35) for all ports except 10,000 PSI (690 bar) Models for which P, A & B Ports MUST NOT EXCEED .156 (4.0) Dia.
- 2.) All dimensions shown are nominal unless otherwise indicated.
- 3.) Recommended minimum center to center spacing between valve assemblies
 2.62 (66.55) for D.C. solenoid versions
 2.87 (72.90) for A.C. solenoid versions.
- 4.) Weight: A.C. Solenoid 5.3 lbs. (2.4 Kilos)
 D.C. Solenoid 8.4 lbs. (3.8 Kilos)