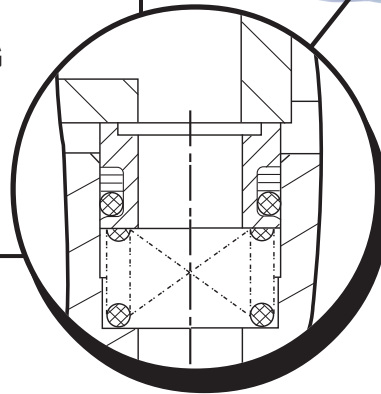


Snap-tite **Direc-Trol**[®]

FEATURES

- VIRTUALLY ZERO INTERNAL LEAKAGE
- PRESSURE RATINGS TO 5000 PSI (345 BAR)
- 1/4", 3/8", 1/2", 3/4", & 1" DESIGN SIZES
- NON-INTERFLOW AVAILABLE ON 1/4" AND 3/8" SIZES
- LONG-LIFE, ANTI-WEAR DESIGN
- FLOWS TO 83 GPM (315 L/MIN)
- PRESSURE ENERGIZED FACE SEAL
- VERTICAL, HORIZONTAL AND MANIFOLD MOUNTING
- EXCELLENT METERING CHARACTERISTICS
- CONTAMINATION RESISTANT
- ROTARY FLOW SHEAR DESIGN



If you want to control fluid direction ... with virtual zero leakage, Snap-tite Direc-Trol[®] Valves are the industry's preferred line.

These high performance valves are designed for any application where precise metering and high efficiency are required.

The rotary flow design of Direc-Trol[®] valves accounts for their outstanding ability to stand up to even the most grueling of hydraulic or pneumatic system applications.

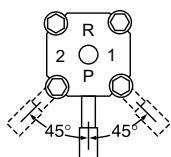
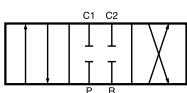
Direc-Trol[®] Valves have so many distinct features that it is easy to specify them in the most demanding situations.

A non-interflow seal and rotor configuration can be added to 1/4" and 3/8" valves. This non-interflow feature minimizes the open center crossover condition.

- **Mobile Equipment** • **Machine Tools** • **Marine** • **Oil Field** • **In-Plant** • **Pilot Valve Actuators**
- **Accumulator Circuits** • **Test Stands** • **High Pressure Clamping, Crimping & Torquing**

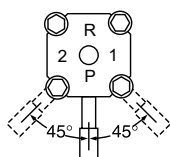
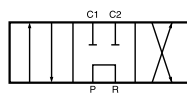
Flow Patterns (JIC Symbol)

Closed Center

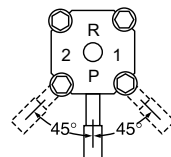
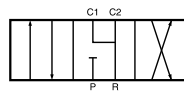


Shift
Pattern
as viewed
from bottom
of valve

Tandem Center



Float Center



Shift
Pattern
as viewed
from bottom
of valve

Open Center

