

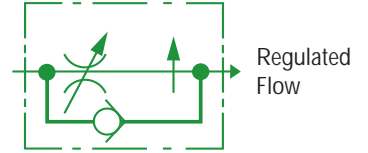
# FRIA SERIES

**Adjustable  
Inline Flow  
Control  
Valves**



**- Pressure  
Compensated**

- 5000 psi (345 bar) working pressure
- Flows to 30 gpm (115 l/min)
- Free reverse flow
- Five standard port sizes
- Fingertip adjustment & locking
- Rugged all steel construction
- Stainless steel adjustment assembly available

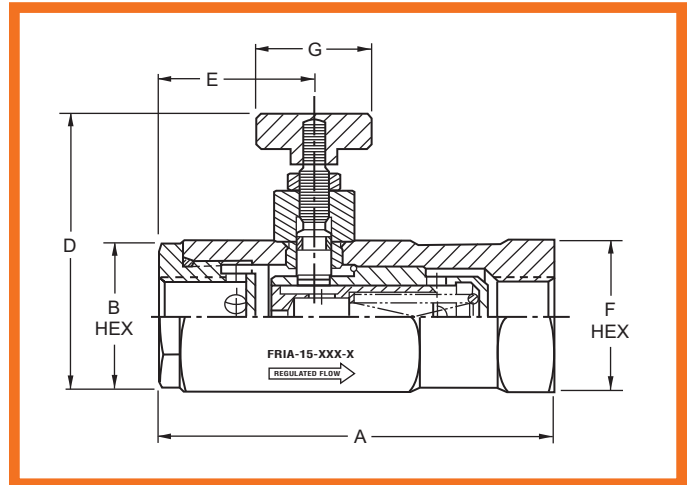
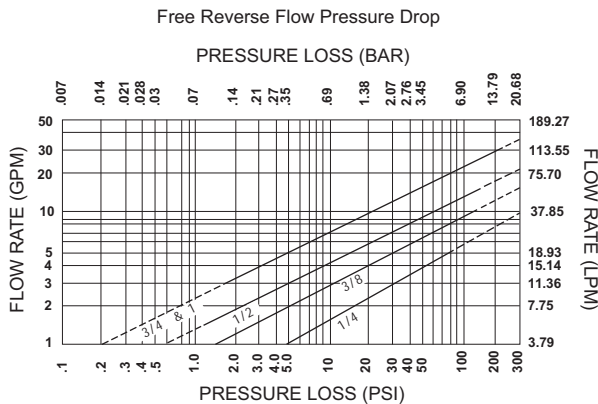


## Features

Snap-tite's FRIA Series valves provide accurate, consistent control of hydraulic motor and cylinder actuation speeds and automatically compensate for changes in system pressure. Flow rate selection is infinitely variable within the extremes of the flow range for each size and can be adjusted under pressure. Snap-tite's Adjustable Flow Control Valves maintain a tolerance of  $\pm 10\%$ . A minimum regulating pressure of 150 psi (10 bar) is required.

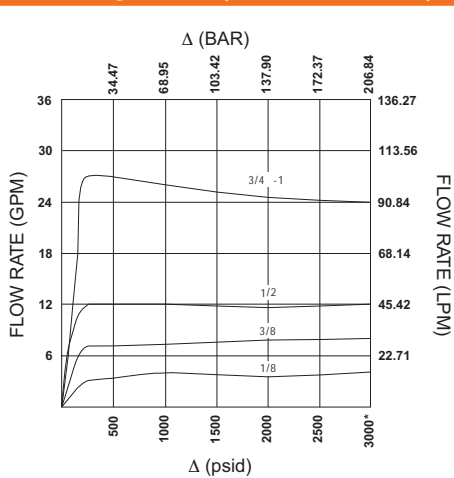
The free reverse flow feature allows maximum return flow with minimum pressure loss. A locking nut assures positive setting against high vibration conditions.

### FRIA with Adjustment Stem Fully Open



Flow curves are nominal and recorded with 100 ssu fluid.

### Flow Regulation (80% Rated Flow)



\*3000 psi inlet pressure

### Dimensions and Specifications

Port Size (NPTF)	Adjust. Range (GPM)		A	B	D	E	F	G
1/4	.75-5	In.	4.45	1.000	2.56	1.94	1.125	1.00
		mm	113.0	25.4	65.0	49.3	28.6	25.4
3/8	1.0-10	In.	4.45	1.000	2.56	1.94	1.125	1.00
		mm	113.0	25.4	65.0	49.3	28.6	25.4
1/2	1.5-15	In.	4.28	1.375	3.25	1.65	1.625	1.25
		mm	108.7	34.9	133.5	41.9	41.3	31.8
3/4	3.0-30	In.	5.90	1.875	3.75	2.22	2.25	1.25
		mm	149.9	47.6	95.3	56.4	57.15	31.8
1	3.0-30	In.	5.90	1.875	3.75	2.22	2.25	1.25
		mm	149.9	47.6	95.3	56.4	57.15	31.8