

SPECIAL DUTY SEALS - DOUBLE CARTRIDGE

RBA - RECIPROCAL BALANCED AXIAL SEAL

The SEPCO® RBA is a multiple, cartridge mounted seal. The flexible parts are mounted in the gland to reduce centrifugal forces permitting operation on high PV applications. The multiple spring design allows up to 1/16" end-play making the seal ideal for equipment with excessive end-play, split case pumps and where positive lubrication is required from an external source without diluting the pumped product.

Stationary Design

This design squares the seal faces 90° to the centerline of the shaft preventing misalignment, giving better control of the parallel sealing gap and eliminating wear in secondary seal areas.

Cartridge Mounted

The RBA is a completely self-contained unit pre-assembled and pre-set at the factory for ease of installation and maintenance.

Versatile

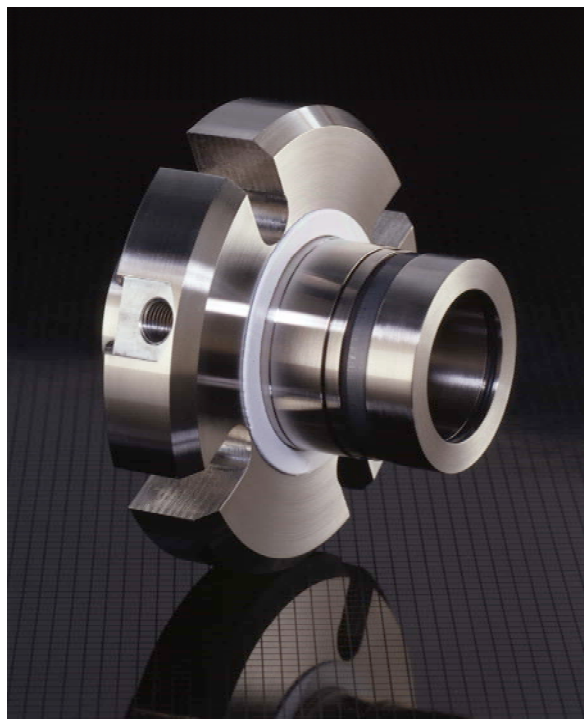
The seal gland is slotted to provide versatility for mounting and machined for superior strength and corrosion resistance. The narrow cross-section inboard design allows for installation on stuffing boxes with minimal radial space.

Reciprocal Balanced

The inboard seal is balanced from the product side as well as the flush side of the inboard seal faces. The RBA can operate in either a tandem or double mode without face separation.

Multiple Springs

Multiple springs provide even mechanical loads for cooler operation and are isolated from the pumped product to prevent clogging. They are manufactured from Hastelloy® to provide superior corrosion resistance.



RBA - SPECIFICATIONS



Metal Parts:

Standard metal parts and set screws: 316 SS
Springs: Hastelloy® C

Face Materials:

Standard: High quality chemical grade carbon-graphite, solid nickel bound tungsten carbide, high-purity ceramic, and silicon carbide

O-ring Materials:

Standard: Viton®, EPR and Aflas™
Optional: Perfluorinated Elastomers

Operating Capabilities:

Pressure: Inboard Seal: 350 psig (24 bar g) Pressure Differential
Outboard Seal: To 150 psig (10 bar g)
Temperature: Inboard Seal: To 400°F (205°C)
Outboard Seal: To 250°F (121°C)
Speeds: 7500 fpm (38 m/s)

SEPCO®