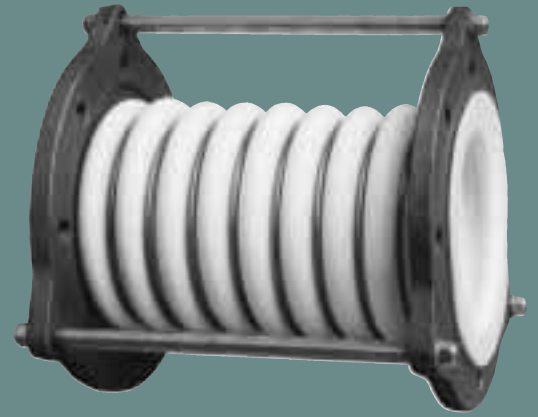


PROCO™

STYLE 4410



ten convolution heavy-duty molded PTFE bellows

TABLE 9

NOMINAL SIZE I.D.	NEUTRAL LENGTH INCHES	MOVEMENT CAPABILITIES BASED ON TEN CONVOLUTION DESIGN			SPRING RATE CAPABILITY BASED ON 1" OF MOVEMENT AT ZERO PRESSURE CONDITIONS			EXPANSION JOINT FLANGE DRILLING						PRESSURE AT TEMPERATURE (PSIG) @ °F								VACUUM	WEIGHT / LBS		
		± AXIAL (ΔX) MOVEMENT	LATERAL (ΔY) DEFLECTION	ANGULAR DEFLECTION	FORCE LBS PER 1" RATED EXTENSION	FORCE LBS PER 1" RATED COMPRESSION	FORCE LBS PER 1" RATED LATERAL DEFLECTION	# HOLES	THREADED HOLE SIZE	BOLT CIRCLE FLANGE "A"	FLANGE THICKNESS	NOMINAL FLANGE DIAMETER	LIMIT BOLT DIAMETER	BOLT CIRCLE LIMIT BOLT "B"	LIMIT BOLT "EAR" O.D.	All units are hydrostatically tested at 1.5 times rated pressure after manufacturing.									
																IN	IN	DEG.	LB/IN	LB/IN	LB/IN			70°	100°
1.00	5.315	1.732	1.063	61	ENGINEERED	PER	SPECIFICATIONS	4	1/2-13	3.125	.551	4.250	.250	5.300	6.102	232	183	150	104	90	75	62	50	NOT DESIGNED FOR VACUUM SERVICE	4
1.25	6.890	1.890	1.378	58				4	1/2-13	3.500	.551	4.625	.250	6.700	7.480	232	183	150	104	90	75	62	50		6
1.50	6.890	1.890	1.378	58				4	1/2-13	3.875	.630	5.000	.250	6.700	7.480	232	183	150	104	90	75	62	50		8
2.00	7.087	2.008	1.496	55				4	5/8-11	4.750	.630	6.000	.250	7.300	8.071	232	183	150	104	90	75	62	50		10
2.50	8.465	2.047	1.535	51				4	5/8-11	5.500	.630	7.000	.250	8.100	8.858	232	183	150	104	90	75	62	50		11
3.00	10.040	2.244	1.575	45				4	5/8-11	6.000	.630	7.500	.250	8.700	9.449	232	183	150	104	90	75	62	50		14
4.00	10.433	2.480	1.654	40				8	5/8-11	7.500	.630	9.000	.250	9.400	10.236	232	183	150	104	90	75	62	50		17
5.00	11.614	2.598	1.732	38				8	3/4-10	8.500	.630	10.000	.375	11.000	11.417	232	183	150	104	90	75	62	50		34
6.00	11.417	2.756	1.811	35				8	3/4-10	9.500	.709	11.000	.375	12.400	13.583	232	183	150	104	90	75	62	50		38
8.00	11.417	2.913	1.850	28				8	3/4-10	11.750	.709	13.500	.375	14.600	15.748	232	183	150	104	90	75	62	50		42
10.00	12.600	3.071	1.890	26				12	7/8-9	14.250	.709	16.000	.375	16.700	17.913	232	183	150	104	90	75	62	50		62
12.00	13.189	3.150	1.929	24				12	7/8-9	17.000	.709	19.000	.375	19.700	21.260	232	183	150	104	90	75	62	50		76
14.00	13.189	3.346	1.969	22	12	1-8	18.750	.787	21.000	.375	22.200	22.244	232	183	150	104	90	75	62	50	94				
16.00	13.386	3.346	1.969	22	16	1-8	21.250	.787	23.500	.375	24.300	25.000	232	183	150	104	90	75	62	50	130				
18.00	13.386	3.543	2.087	20	16	1 1/8-7	22.750	.866	25.000	.375	25.800	27.362	232	183	150	104	90	75	62	50	156				
20.00	13.583	3.543	2.087	20	20	1 1/8-7	25.000	.866	27.500	.375	28.800	29.134	232	183	150	104	90	75	62	50	181				
22.00	13.583	3.583	2.165	18	20	1 1/4-7	27.250	.945	29.500	.375	30.500	31.890	232	183	150	104	90	75	62	50	218				
24.00	14.173	3.583	2.205	17	20	1 1/4-7	29.500	.945	32.000	.375	32.900	34.646	232	183	150	104	90	75	62	50	264				

Larger diameters, custom lengths, and performance requirements available upon request.

Pressure Rating Note:

316 Stainless Steel Anti-Squirm Flanges are available for higher pressure applications. (See Back Cover.)

MATERIALS OF CONSTRUCTION	
DESCRIPTION	STYLE 4410
BELLOWS	WHITE PTFE
FLANGES	DUCTILE IRON
REINFORCING RINGS	304 SS
LIMIT BOLTS	CARBON STEEL
NUTS	CARBON STEEL
INSULATING SLEEVES	POLYETHYLENE
WASHERS	CARBON STEEL / NYLON