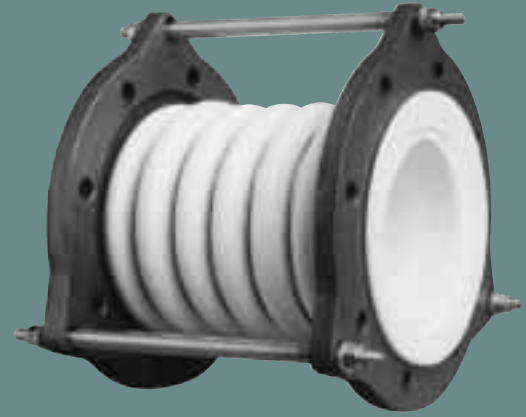


# PROCO™

## STYLE 4407



seven convolution heavy-duty molded PTFE bellows

TABLE 6

NOMINAL SIZE I.D.	NEUTRAL LENGTH INCHES	MOVEMENT CAPABILITIES BASED ON SEVEN CONVOLUTION DESIGN			SPRING RATE CAPABILITY BASED ON 1" OF MOVEMENT AT ZERO PRESSURE CONDITIONS			EXPANSION JOINT FLANGE DRILLING						PRESSURE AT TEMPERATURE (PSIG) @ °F								VACUUM	WEIGHT / LBS		
		± AXIAL (ΔX) MOVEMENT	LATERAL (ΔY) DEFLECTION	ANGULAR DEFLECTION	FORCE LBS PER 1" RATED EXTENSION	FORCE LBS PER 1" RATED COMPRESSION	FORCE LBS PER 1" RATED LATERAL DEFLECTION	# HOLES	THREADED HOLE SIZE	BOLT CIRCLE FLANGE "A"	FLANGE THICKNESS	NOMINAL FLANGE DIAMETER	LIMIT BOLT DIAMETER	BOLT CIRCLE LIMIT BOLT "B"	LIMIT BOLT "EAR" O.D.	All units are hydrostatically tested at 1.5 times rated pressure after manufacturing.									
																IN	IN	DEG.	LB/IN	LB/IN	LB/IN			70°	100°
1.00	4.134	1.181	.669	45	<b>ENGINEERED</b>	<b>PER</b>	<b>SPECIFICATIONS</b>	4	1/2-13	3.125	.551	4.250	.250	5.300	6.102	232	183	150	104	90	75	62	50	<b>NOT</b>	4
1.25	5.118	1.378	.866	42				4	1/2-13	3.500	.551	4.625	.250	6.700	7.480	232	183	150	104	90	75	62	50		6
1.50	5.118	1.378	.866	42				4	1/2-13	3.875	.630	5.000	.250	6.700	7.480	232	183	150	104	90	75	62	50		8
2.00	5.315	1.535	.866	42				4	5/8-11	4.750	.630	6.000	.250	7.300	8.071	232	183	150	104	90	75	62	50		9
2.50	6.102	1.654	.945	36				4	5/8-11	5.500	.630	7.000	.250	8.100	8.858	232	183	150	104	90	75	62	50	<b>DESIGNED</b>	11
3.00	7.480	1.772	.984	33				4	5/8-11	6.000	.630	7.500	.250	8.700	9.449	232	183	150	104	90	75	62	50		13
4.00	7.480	1.890	1.024	30				8	5/8-11	7.500	.630	9.000	.250	9.400	10.236	232	183	150	104	90	75	62	50	<b>FOR</b>	16
5.00	8.268	1.929	1.063	27				8	3/4-10	8.500	.630	10.000	.375	11.000	11.417	232	183	150	104	90	75	62	50		28
6.00	8.268	1.969	1.102	23				8	3/4-10	9.500	.709	11.000	.375	12.400	13.583	232	183	150	104	90	75	62	50	<b>VACUUM</b>	33
8.00	9.055	2.008	1.102	20				8	3/4-10	11.750	.709	13.500	.375	14.600	15.748	232	183	150	104	90	75	62	50		38
10.00	9.252	2.047	1.181	18				12	7/8-9	14.250	.709	16.000	.375	16.700	17.913	232	183	150	104	90	75	62	50	<b>SERVICE</b>	57
12.00	9.449	2.087	1.260	17				12	7/8-9	17.000	.709	19.000	.375	19.700	21.260	232	183	150	104	90	75	62	50		69
14.00	9.449	2.165	1.339	16				12	1-8	18.750	.787	21.000	.375	22.200	22.244	232	183	150	104	90	75	62	50	<b>SERVICE</b>	85
16.00	9.843	2.323	1.339	16				16	1-8	21.250	.787	23.500	.375	24.300	25.000	232	183	150	104	90	75	62	50		125
18.00	9.843	2.362	1.378	14				16	1 1/8-7	22.750	.866	25.000	.375	25.800	27.362	232	183	150	104	90	75	62	50	150	
20.00	10.039	2.362	1.378	14				20	1 1/8-7	25.000	.866	27.500	.375	28.500	29.134	232	183	150	104	90	75	62	50	174	
22.00	10.039	2.441	1.417	13	20	1 1/4-7	27.250	.945	29.500	.375	30.500	31.890	232	183	150	104	90	75	62	50	210				
24.00	10.236	2.441	1.417	11	20	1 1/4-7	29.500	.945	32.000	.375	32.900	34.646	232	183	150	104	90	75	62	50	255				

Larger diameters, custom lengths, and performance requirements available upon request.

Pressure Rating Note:

316 Stainless Steel Anti-Squirm Flanges are available for higher pressure applications. (See Back Cover.)

MATERIALS OF CONSTRUCTION	
DESCRIPTION	STYLE 4407
BELLOWS	WHITE PTFE
FLANGES	DUCTILE IRON
REINFORCING RINGS	304 SS
LIMIT BOLTS	CARBON STEEL
NUTS	CARBON STEEL
INSULATING SLEEVES	POLYETHYLENE
WASHERS	CARBON STEEL / NYLON