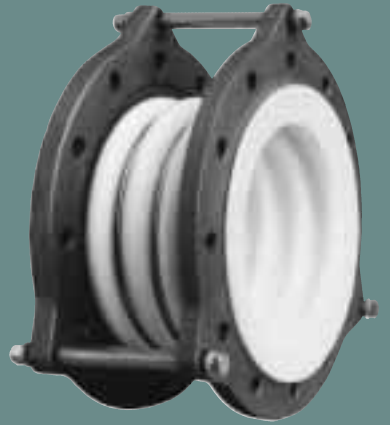


PROCO™

STYLE 4404



four convolution heavy-duty molded PTFE bellows

TABLE 3

NOMINAL SIZE I.D.	NEUTRAL LENGTH INCHES	MOVEMENT CAPABILITIES BASED ON FOUR CONVOLUTION DESIGN			SPRING RATE CAPABILITY BASED ON 1" OF MOVEMENT AT ZERO PRESSURE CONDITIONS			EXPANSION JOINT FLANGE DRILLING							PRESSURE AT TEMPERATURE (PSIG) @ °F								VACUUM Hg at Temp.	WEIGHT / LBS	
		± AXIAL (ΔX) MOVEMENT	LATERAL (ΔY) DEFLECTION	ANGULAR DEFLECTION	FORCE LBS PER 1" RATED EXTENSION	FORCE LBS PER 1" RATED COMPRESSION	FORCE LBS PER 1" RATED LATERAL DEFLECTION	# HOLES	THREADED HOLE SIZE	BOLT CIRCLE FLANGE "A"	FLANGE THICKNESS	NOMINAL FLANGE DIAMETER	LIMIT BOLT DIAMETER	BOLT CIRCLE LIMIT BOLT "B"	LIMIT BOLT "EAR" O.D.	All units are hydrostatically tested at 1.5 times rated pressure after manufacturing.									
																IN	IN	DEG.	LB/IN	LB/IN	LB/IN	70°			100°
1.00	2.560	.591	.315	25	686	457	1200	4	1/2-13	3.125	.551	4.250	.250	5.300	6.102	232	183	150	104	90	75	62	50	29.9° @ 350°F	4
1.25	2.969	.709	.315	24	686	457	1200	4	1/2-13	3.500	.551	4.625	.250	6.700	7.480	232	183	150	104	90	75	62	50	29.9° @ 350°F	6
1.50	3.346	.709	.315	24	743	457	1200	4	1/2-13	3.875	.630	5.000	.250	6.700	7.480	232	183	150	104	90	75	62	50	29.9° @ 350°F	8
2.00	3.346	.906	.551	23	971	486	1257	4	5/8-11	4.750	.630	6.000	.250	7.300	8.071	232	183	150	104	90	75	62	50	29.9° @ 350°F	9
2.50	3.937	1.024	.591	21	1028	486	1257	4	5/8-11	5.500	.630	7.000	.250	8.100	8.858	232	183	150	104	90	75	62	50	29.9° @ 350°F	10
3.00	4.134	1.181	.591	19	1199	486	1342	4	5/8-11	6.000	.630	7.500	.250	8.700	9.449	232	183	150	104	90	75	62	50	29.9° @ 350°F	12
4.00	4.528	1.181	.591	18	1199	571	1542	8	5/8-11	7.500	.630	9.000	.250	9.400	10.236	232	183	150	104	90	75	62	50	29.9° @ 350°F	15
5.00	4.921	1.260	.630	16	1285	657	1656	8	3/4-10	8.500	.630	10.000	.375	11.000	11.417	232	183	150	104	90	75	62	50	29.9° @ 350°F	22
6.00	5.118	1.260	.669	15	1542	743	1942	8	3/4-10	9.500	.709	11.000	.375	12.400	13.583	232	183	150	104	90	75	62	50	29.9° @ 350°F	24
8.00	5.315	1.299	.669	13	1913	943	2484	8	3/4-10	11.750	.709	13.500	.375	14.600	15.748	232	183	150	104	90	75	62	50	29.9° @ 212°F	34
10.00	5.709	1.339	.709	12	2370	1114	2941	12	7/8-9	14.250	.709	16.000	.375	16.700	17.913	232	183	150	104	90	75	62	50	29.9° @ 212°F	52
12.00	5.906	1.339	.709	11	2742	1314	3427	12	7/8-9	17.000	.709	19.000	.375	19.700	21.260	232	183	150	104	90	75	62	50	29.9° @ 212°F	62
14.00	5.906	1.339	.709	10	ENGINEERED PER SPECIFICATIONS			12	1-8	18.750	.787	21.000	.375	22.200	22.244	232	183	150	104	90	75	62	50	14.9° @ 70°F	80
16.00	6.300	1.378	.709	10				16	1-8	21.250	.787	23.500	.375	24.300	25.000	232	183	150	104	90	75	62	50	14.9° @ 70°F	113
18.00	6.300	1.378	.709	8				16	1 1/8-7	22.750	.866	25.000	.375	25.800	27.362	232	183	150	104	90	75	62	50	14.9° @ 70°F	136
20.00	6.496	1.378	.709	8				20	1 1/8-7	25.000	.866	27.500	.375	28.500	29.134	232	183	150	104	90	75	62	50	14.9° @ 70°F	159
22.00	6.496	1.260	.591	7				20	1 1/4-7	27.250	.945	29.500	.375	30.500	31.890	232	183	150	104	90	75	62	50	14.9° @ 70°F	193
24.00	6.102	1.260	.591	6				20	1 1/4-7	29.500	.945	32.000	.375	32.900	34.646	232	183	150	104	90	75	62	50	14.9° @ 70°F	236

Larger diameters, custom lengths, and performance requirements available upon request.

Pressure Rating Note:

316 Stainless Steel Anti-Squirm Flanges are available for higher pressure applications. (See Back Cover.)

MATERIALS OF CONSTRUCTION	
DESCRIPTION	STYLE 4404
BELLOWS	WHITE PTFE
FLANGES	DUCTILE IRON
REINFORCING RINGS	304 SS
LIMIT BOLTS	CARBON STEEL
NUTS	CARBON STEEL
INSULATING SLEEVES	POLYETHYLENE
WASHERS	CARBON STEEL / NYLON