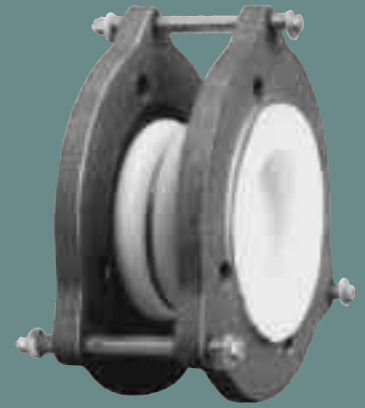


PROCO™

STYLE 4403



three convolution heavy-duty molded PTFE bellows

TABLE 2

NOMINAL SIZE I.D.	NEUTRAL LENGTH INCHES	MOVEMENT CAPABILITIES BASED ON THREE CONVOLUTION DESIGN			SPRING RATE CAPABILITY BASED ON 1" OF MOVEMENT AT ZERO PRESSURE CONDITIONS			EXPANSION JOINT FLANGE DRILLING						PRESSURE AT TEMPERATURE (PSIG) @ °F								VACUUM Hg at Temp.	WEIGHT / LBS		
		± AXIAL (ΔX) MOVEMENT IN	LATERAL (ΔY) DEFLECTION IN	ANGULAR DEFLECTION DEG.	FORCE LBS PER 1" RATED EXTENSION LB/IN	FORCE LBS PER 1" RATED COMPRESSION LB/IN	FORCE LBS PER 1" RATED LATERAL DEFLECTION LB/IN	# HOLES	THREADED HOLE SIZE	BOLT CIRCLE FLANGE "A"	FLANGE THICKNESS	NOMINAL FLANGE DIAMETER	LIMIT BOLT DIAMETER	BOLT CIRCLE LIMIT BOLT "B"	LIMIT BOLT "EAR" O.D.	All units are hydrostatically tested at 1.5 times rated pressure after manufacturing.									
																70°	100°	150°	200°	250°	300°			350°	400°
1.00	2.165	.472	.236	19	857	571	1599	4	1/2-13	3.125	.551	4.250	.250	5.300	6.102	232	183	150	104	90	75	62	50	29.9" @ 350°F	4
1.25	2.559	.748	.236	18	910	571	1599	4	1/2-13	3.500	.551	4.625	.250	6.700	7.480	232	183	150	104	90	75	62	50	29.9" @ 350°F	6
1.50	2.756	.748	.236	18	971	571	1599	4	1/2-13	3.875	.630	5.000	.250	6.700	7.480	232	183	150	104	90	75	62	50	29.9" @ 350°F	8
2.00	2.756	.748	.354	16	1142	571	1599	4	5/8-11	4.750	.630	6.000	.250	7.300	8.071	232	183	150	104	90	75	62	50	29.9" @ 350°F	9
2.50	3.150	.748	.354	16	1256	571	1599	4	5/8-11	5.500	.630	7.000	.250	8.100	8.858	232	183	150	104	90	75	62	50	29.9" @ 350°F	10
3.00	3.346	.984	.472	15	1370	571	1599	4	5/8-11	6.000	.630	7.500	.250	8.700	9.449	232	183	150	104	90	75	62	50	29.9" @ 350°F	12
4.00	3.543	.984	.472	14	1370	685	1884	8	5/8-11	7.500	.630	9.000	.250	9.400	10.236	232	183	150	104	90	75	62	50	29.9" @ 350°F	14
5.00	3.740	.984	.472	12	1542	799	1999	8	3/4-10	8.500	.630	10.000	.375	11.000	11.417	232	183	150	104	90	75	62	50	29.9" @ 350°F	20
6.00	3.937	1.102	.551	11	1770	857	2227	8	3/4-10	9.500	.709	11.000	.375	12.400	13.583	232	183	150	104	90	75	62	50	29.9" @ 350°F	23
8.00	4.134	1.102	.551	10	2227	1085	2798	8	3/4-10	11.750	.709	13.500	.375	14.600	15.748	232	183	150	104	90	75	62	50	29.9" @ 212°F	33
10.00	4.331	1.181	.591	10	2684	1256	3198	12	7/8-9	14.250	.709	16.000	.375	16.700	17.913	232	183	150	104	90	75	62	50	29.9" @ 212°F	51
12.00	4.528	1.181	.591	10	3141	1485	3883	12	7/8-9	17.000	.709	19.000	.375	19.700	21.260	232	183	150	104	90	75	62	50	29.9" @ 212°F	59
14.00	4.528	1.181	.591	8	ENGINEERED PER SPECIFICATIONS			12	1-8	18.750	.787	21.000	.375	22.200	22.244	232	183	150	104	90	75	62	50	14.9" @ 70°F	77
16.00	4.921	1.181	.591	8				16	1-8	21.250	.787	23.500	.375	24.300	25.000	232	183	150	104	90	75	62	50	14.9" @ 70°F	110
18.00	5.512	1.181	.591	6				16	1 1/8-7	22.750	.866	25.000	.375	25.800	27.362	232	183	150	104	90	75	62	50	14.9" @ 70°F	132
20.00	5.315	1.181	.591	6				20	1 1/8-7	25.000	.866	27.500	.375	28.500	29.134	232	183	150	104	90	75	62	50	14.9" @ 70°F	154
22.00	5.315	.984	.472	5				20	1 1/4-7	27.250	.945	29.500	.375	30.500	31.890	232	183	150	104	90	75	62	50	14.9" @ 70°F	187
24.00	5.512	.984	.472	5				20	1 1/4-7	29.500	.945	32.000	.375	32.900	34.646	232	183	150	104	90	75	62	50	14.9" @ 70°F	231

Larger diameters, custom lengths, and performance requirements available upon request.

Pressure Rating Note:

316 Stainless Steel Anti-Squirm Flanges are available for higher pressure applications. (See Back Cover.)

MATERIALS OF CONSTRUCTION	
DESCRIPTION	STYLE 4403
BELLOWS	WHITE PTFE
FLANGES	DUCTILE IRON
REINFORCING RINGS	304 SS
LIMIT BOLTS	CARBON STEEL
NUTS	CARBON STEEL
INSULATING SLEEVES	POLYETHYLENE
WASHERS	CARBON STEEL / NYLON