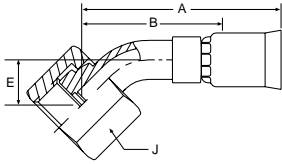


# INDUSTRIAL 91N FITTINGS

## 1J791N Seal-Lok™ Swivel 45° Elbow



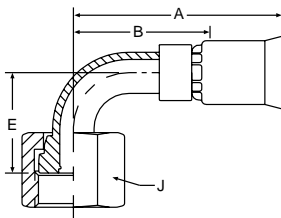
### 91N Series Permanent

*Part Number Hose Fitting	C	Thread Size	Inch	Tube Size	A		Cutoff Allow. B		E		J Hex
				Inch	Inch	MM	Inch	MM	Inch	MM	Inch
1J791N-4-4	+	9/16-18	-4	1/4	1.73	44	1-1/4	32	0.41	10	11/16
1J791N-4-6	+	9/16-18	-6	3/8	1.91	49	1-5/16	33	0.41	10	11/16
1J791N-6-6	+	11/16-16	-6	3/8	2.02	51	1-3/8	35	0.43	11	13/16
1J791N-8-8	+	13/16-16	-8	1/2	2.18	55	1-1/2	38	0.59	15	15/16
1J791N-8-10	+	13/16-16	-8	1/2	2.39	61	1-11/16	43	0.59	15	15/16
1J791N-10-10	+	1-14	-10	5/8	2.47	63	1-3/4	44	0.59	43	1-1/8
1J791N-12-12	+	1-3/16-12	-12	3/4	2.74	58	1-15/16	49	0.81	21	1-3/8
1J791N-16-16	+	1-7/16-12	-16	1	3.50	89	2-1/2	64	0.94	24	1-5/8

\* Steel tube, nipple, nut, and shell.  
C – All components 303 stainless steel.

## PARKER/PAGE International offers Industrial, Sanitary and Field Attachable Fittings

## 1J991N Seal-Lok™ Swivel 90° Elbow



### 91N Series Permanent

*Part Number Hose Fitting	C	Thread Size	Inch	Tube Size	A		Cutoff Allow. B		E		J Hex
				Inch	Inch	MM	Inch	MM	Inch	MM	Inch
1J991N-4-4	+	9/16-18	-4	1/4	1.79	45	1-1/4	32	0.82	21	11/16
1J991N-6-6	+	11/16-16	-6	3/8	1.87	47	1-1/4	32	0.90	23	13/16
1J991N-8-8	+	13/16-16	-8	1/2	2.07	53	1-3/8	35	1.15	29	15/16
1J991N-10-10	+	1-14	-10	5/8	2.23	57	1-1/2	38	1.27	32	1-1/8
1J991N-12-12	+	1-3/16-12	-12	3/4	2.63	67	1-7/8	48	1.85	43	1-3/8
1J991N-16-16	+	1-7/16-12	-16	1	3.45	58	2-9/16	65	2.21	56	1-5/8
1J991N-20-20	+	1-11/16-12	-20	1-1/4	3.91	99	2-7/8	73	2.51	64	1-7/8

\* Steel tube, nipple, nut, and shell.  
C – All components 303 stainless steel.

(+) Non Standard. See page 2 for information on non-standard products.

Smoothbore  
PTFE Hose

Convuluted  
PTFE Hose

Flare Seal  
Hose

Silicone  
Hose

Specialty  
Hoses

Fittings  
Permanent

Accessories

Technical  
Help

Warranty



Parker Hannifin, Parflex Division



Call Toll Free: **1-866-711-4673**  
WebSales@GoodyearRubberProducts.com

We Ship  
World Wide