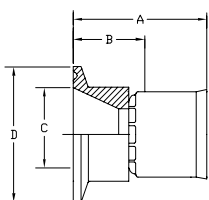


# INDUSTRIAL 91N FITTINGS

## 1FN91N Sanitary Flange

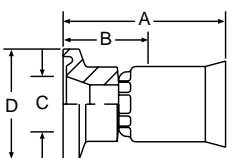


### 91N Series Permanent

Part Number	Inch	Flange Size D	A		Cutoff Allow. B		C	
			Inch	MM	Inch	MM	Inch	MM
1FN91N-16-8C (+)	-8	1.98	1.69	43	1	25	0.87	22
1FN91N-16-10C (+)	-10	1.98	1.72	44	1-1/16	27	0.87	22
1FN91N-16-12C (+)	-12	1.98	1.82	46	1-1/16	27	0.87	22
1FN91N-16-16C (+)	-16	1.98	1.96	50	1-1/16	27	0.87	22
1FN91N-24-8C (+)	-8	1.98	2.33	59	1-5/8	41	1.37	43
1FN91N-24-12C (+)	-12	1.98	1.73	58	7/8	22	1.37	35
1FN91-24-20C (+)	-20	1.98	2.20	56	15/16	24	1.37	35

C – 316L stainless steel nipple, 303 stainless steel shell.

## 1FV91N Mini Sanitary Flange

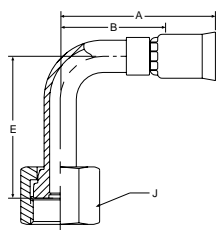


### 91N Series Permanent

Part Number	Inch	Flange Size D	A		Cutoff Allow. B		C	
			Inch	MM	Inch	MM	Inch	MM
1FV91N-8-8C (+)	-8	0.99	1.37	35	11/16	17	0.50	13
1FV91N-12-12C (+)	-12	0.99	1.59	40	13/16	21	0.75	19

C – 316L stainless steel nipple, 303 stainless steel shell.

## 1J191N Female Seal-Lok™ Swivel 90° Elbow Long Drop



### 91N Series Permanent

*Part Number	C	Thread Size	Inch	Tube Size	A		Cutoff Allow. B		E		J
					Inch	MM	Inch	MM	Inch	MM	Inch
1J191N-4-4 (+)		9/16-18	-4	1/4	1.66	42	1-1/16	27	1.80	46	11/16
1J191N-4-5	+	9/16-18	-5	5/16	1.78	45	1-1/16	27	1.80	46	11/16
1J191N-6-5 (+)	+	11/16-16	-5	5/16	1.92	49	1-3/16	30	2.13	54	13/16
1J191N-6-6	+	11/16-16	-6	3/8	1.92	49	1-3/16	30	2.13	54	13/16
1J191N-8-6 (+)	+	13/16-16	-6	3/8	2.00	51	1-9/16	40	2.51	43	15/16
1J191N-8-8	+	13/16-16	-8	1/2	2.15	58	1-7/16	37	2.51	64	15/16
1J191N-10-10	+	1-14	-10	5/8	1.25	32	1-9/16	40	2.76	70	1-1/8
1J191N-12-12	+	1-3/16-12	-12	3/4	2.65	67	1-13/16	46	3.78	96	1-3/8
1J191N-16-16	+	1-7/16-12	-16	1	3.15	80	2-1/4	57	4.50	114	1-1/2

\* Steel tube, nipple, nut, and shell.

C – All components 303 stainless steel.

(+) Non Standard. See page 2 for information on non-standard products.

Smoothbore PTFE Hose

Convuluted PTFE Hose

Flare Seal Hose

Silicone Hose

Specialty Hoses

Fittings Permanent

Accessories

Technical Help

Warranty