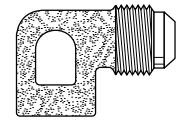
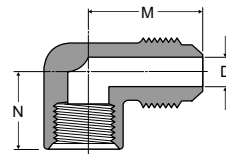


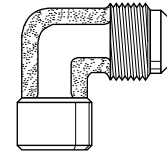
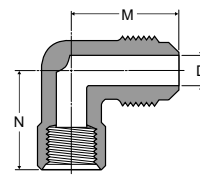
Female Elbow 150F

Ref. SAE 010203

PART NO.	TUBE SIZE	PIPE THREAD	STRAIGHT THREAD	M	N	FLOW DIA. D	TYPE
150F-4-2	1/4	1/8	7/16-20	.86	.50	.189	A
150F-4-4	1/4	1/4	7/16-20	.95	.64	.189	A
150F-5-4	5/16	1/4	1/2-20	1.01	.64	.220	A
150F-6-2	3/8	1/8	5/8-18	1.08	.48	.283	B
150F-6-4	3/8	1/4	5/8-18	1.07	.67	.283	A
150F-6-6	3/8	3/8	5/8-18	1.14	.67	.283	A
150F-6-8	3/8	1/2	5/8-18	1.23	.86	.283	A
150F-8-6	1/2	3/8	3/4-16	1.25	.69	.408	A
150F-8-8	1/2	1/2	3/4-16	1.36	.94	.408	A
150F-8-12	1/2	3/4	3/4-16	1.41	.94	.408	A
150F-10-8	5/8	1/2	7/8-14	1.48	1.01	.502	A
150F-10-12	5/8	3/4	7/8-14	1.64	.98	.502	A



Type A



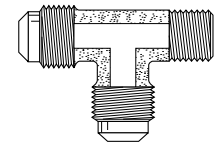
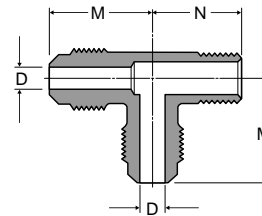
Type B



Male Run Tee 151F

Ref. SAE 010424

PART NO.	TUBE SIZE	PIPE THREAD	STRAIGHT THREAD	M	N	FLOW DIA. D
151F-4-2	1/4	1/8	7/16-20	.86	.76	.189
151F-4-4	1/4	1/4	7/16-20	.92	.89	.189
151F-5-4	5/16	1/4	1/2-20	.92	.95	.220
151F-6-4	3/8	1/4	5/8-18	1.04	1.04	.283
151F-6-6	3/8	3/8	5/8-18	.98	1.00	.283
151F-6-8	3/8	1/2	5/8-18	1.26	1.16	.283
151F-8-6	1/2	3/8	3/4-16	1.20	1.10	.406
151F-8-8	1/2	1/2	3/4-16	1.35	1.23	.408
151F-10-8	5/8	1/2	7/8-14	1.36	1.39	.500



Union Elbow 155F

Ref. SAE 010201 *Thread Protectors

PART NO.	TUBE SIZE	STRAIGHT THREAD	M	FLOW DIA. D
155F-2	1/8	5/16-24	.64	.079
155F-3	3/16	3/8-24	.73	.126
155F-4	1/4	7/16-20	.86	.189
155F-5	5/16	1/2-20	.92	.220
155F-6	3/8	5/8-18	1.04	.283
155F-8	1/2	3/4-16	1.31	.408
155F-10	5/8	7/8-14	1.39	.502
155F-12*	3/4	1-1/16-14	1.63	.625

