

Prestotwin - Combined flow - blocking - unloading valves

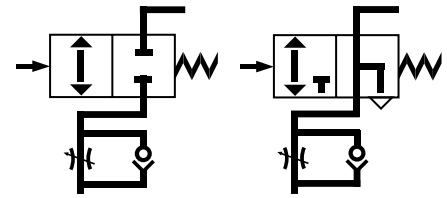
Principle

Prestotwin are multi-function fittings combining flow control and blocking or flow control and unloading. This avoids the requirement for two function fittings offering a compact solution with significant space saving. They meet the requirements for a safety fitting and incorporate the facility to accurately control the piston rod speed.

Operation

PBVF4PK Flow regulator + blocker

- The pilot signal acting on the diaphragm keeps the poppet valve open. When the pilot signal is removed the spring closes the poppet valve.
- Flow control is obtained by the adjustment of the rotating barrel against a ball bearing.
- The flow control locknut ensures the optimum setting is maintained.

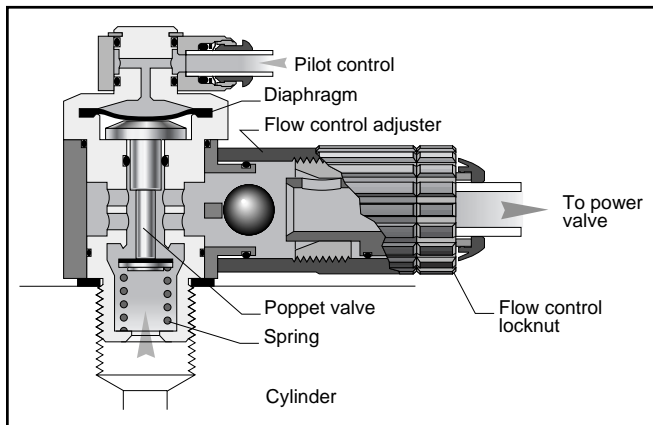


Speed control and blocker

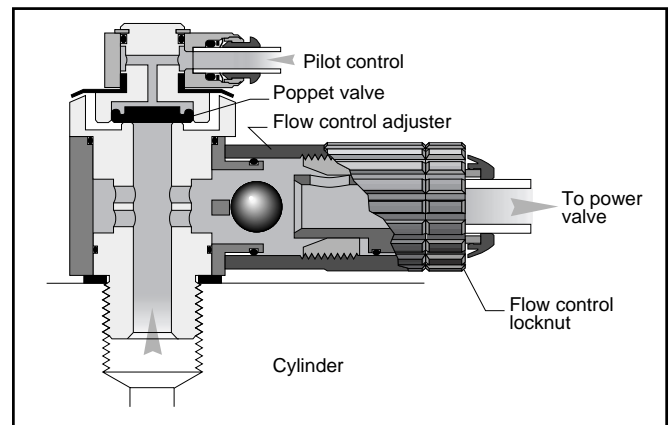
Speed control and unloader

PSPF4PK Flow regulator + unloader

- The pilot signal operating on the poppet valve keeps it closed. When the pilot signal is removed the cylinder air exhausts through the vent.
- Flow control is obtained by the adjustment of the rotating barrel against a ball bearing.
- The flow control locknut ensures the optimum setting is maintained.



Combined flow control and blocker



Combined flow control and unloader

Technical features

BODY MATERIAL	BOLT MATERIAL	BOLT THREAD	SEALING DEVICE	PILOT TERMINATION	FLOW CONTROL ADJUSTMENT	FLOW CONTROL LOCKING	WORKING TEMP.	WORKING PRESSURE
Zinc Alloy Epoxy Coated	Brass	1/8 BSPP 1/4 BSPP	Nylon Washer	4 mm - 8 mm Push-In	Rotating Barrel	Knurled Locknut	From 0° to +140° F	140 PSI

PWR-HB- Flow Regulator + Blocker with Push-In Connection

PART NO.	1	B	2	C5	J	M	N	N1	O	Y
PWR-HB1448	4	1/8	4	24	8	47	21.5	67	22.5	21
PWR-HB1468	6	1/8	4	24	8	47	21.5	67	22.5	21
PWR-HB1469	6	1/4	4	24	10	47	23.5	69	22.5	21
PWR-HB1489	8	1/4	4	24	10	47	23.5	69	22.5	21
PWR-HB1483	8	3/8	4	27	11	60	29.0	73	29.0	28
PWR-HB1493	10	3/8	4	27	11	60	29.0	73	29.0	28

