

**Prestobloc - Pilot-operated blocking fittings**

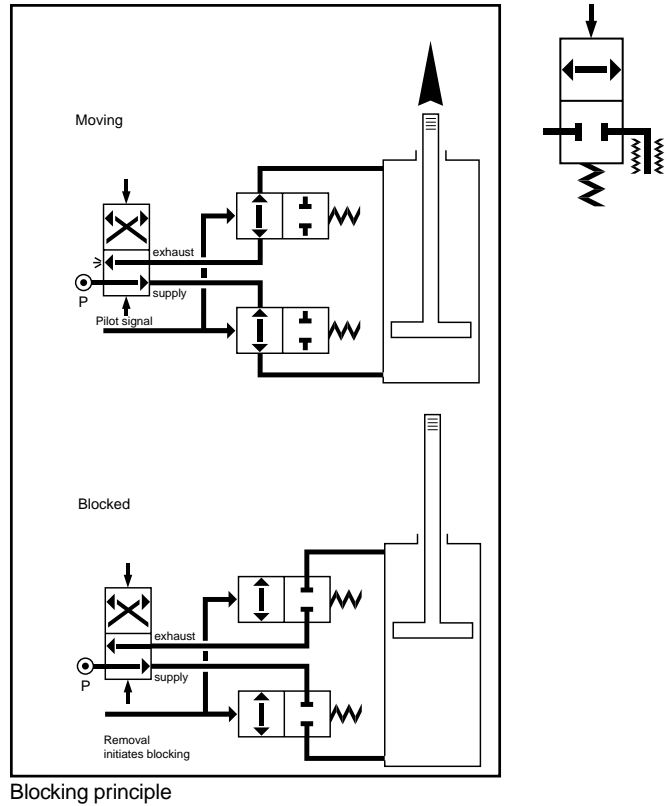
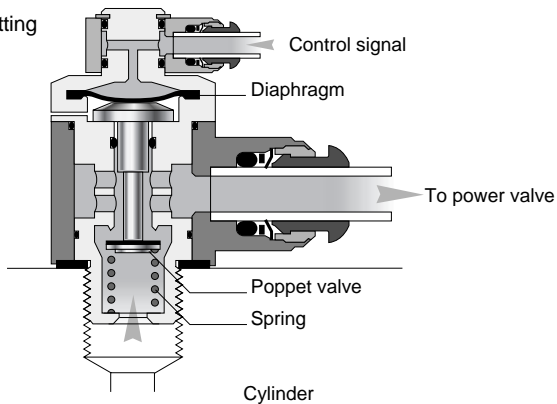
**Principle**

Prestobloc pilot-operated blocking fittings are designed for mounting directly to the cylinder ports. Available with push-in or threaded terminations, these function fittings permit safe and immediate stopping of the piston rod by blocking the cylinder supply and exhaust.

**Operation**

- Pilot operated diaphragm maintains full flow when pilot signal is present.
- Spring closes the poppet valve locking air in the cylinder when the pilot signal is removed.
- Prestobloc fittings used in conjunction with Prestoflow flow regulators are mounted on inlet and outlet ports.
- Pilot signal should be independent from the control valve.

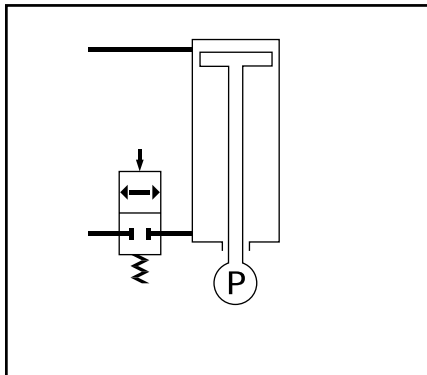
Prestobloc fitting



**Technical features**

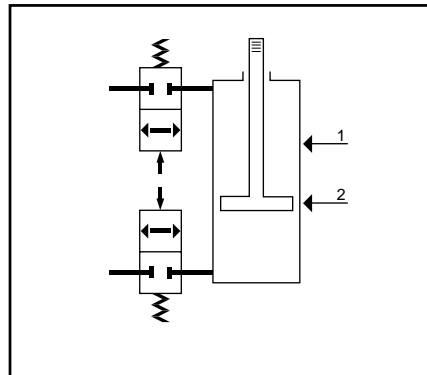
BODY MATERIAL	BOLT MATERIAL	BOLT THREAD	SEALING DEVICE	TERMINATIONS		PILOT TERMINATION	WORKING TEMPERATURE	WORKING PRESSURE
Zinc Alloy Epoxy Coated	Brass	1/8 BSPP 1/4 BSPP 3/8 BSPP 1/2 BSPP	Nylon Washer	6 mm - 12 mm Push-In	1/4 - 1/2 BSPP Female Thread	4 mm - 8 mm Push-In	From 0° to +150° F	140 PSI

**Applications**



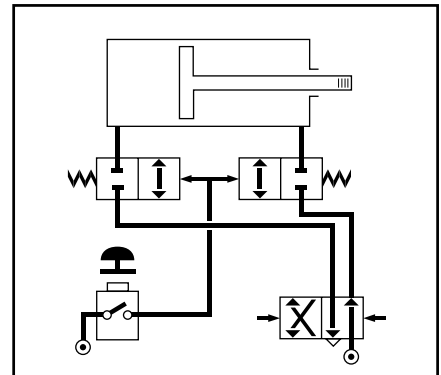
**Safety stop**

Prevents descent under load in the event of power failure



**Stroke control**

Stops the piston in various positions for conveying and handling applications.



**Safety locks**

Safety guards for assembly and punch presses. Combination with an emergency switch: restarting the cylinder after resetting the emergency switch.