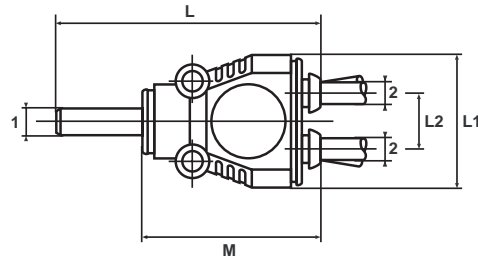


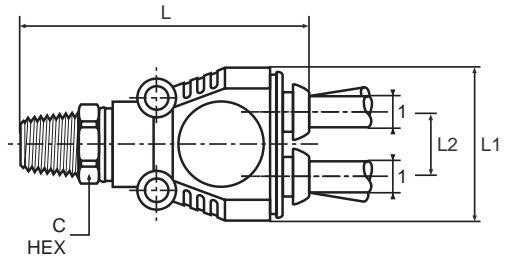
YJ52PK Plug-in Double Y Connector

PART NUMBER	MOUNTING		HOLE DIA	L	L1	L2	M
	1	2					
YJ52PK6-4	6	4	3.2	52	22.5	9.5	31



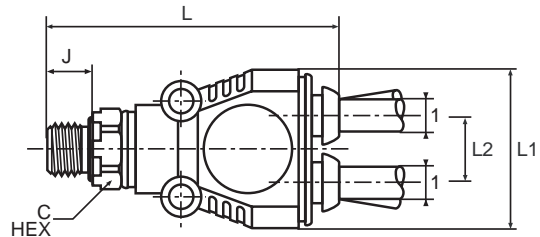
YJ563PK Union Double Y Connector Adjustable Male BSPT

PART NUMBER	1	BSPT	MOUNTING		L	L1	L2
			HOLE DIA	C HEX			
YJ563PK4-1/8	4	1/8	3.2	10	42.5	22.5	9.5
YJ563PK4-1/4	4	1/4	3.2	14	46.0	22.5	9.5



YJ564PK Union Double Y Connector Adjustable Male BSPP

PART NUMBER	1	BSPP	MOUNTING		J	L	L1	L2
			HOLE DIA	C HEX				
YJ564PK4-1/8	4	1/8	3.2	14	6	42.5	22.5	9.5
YJ564PK4-1/4	4	1/4	3.2	19	9	47.5	22.5	9.5



YJ63PK Adjustable Male Y Connector BSPT

PART NO.	TUBE SIZE	BSPT	MOUNTING		L	L1	L2
			HOLE DIA	C HEX			
YJ63PK4-1/8*	4	1/8	10	38.5	22	11.0	
YJ63PK4-1/4*	4	1/4	14	42.0	22	11.0	
YJ63PK6-1/8*	6	1/8	11	51.5	30	13.5	
YJ63PK6-1/4*	6	1/4	14	50.0	30	13.5	
YJ63PK8-1/8*	8	1/8	14	47.0	30	13.5	
YJ63PK8-1/4*	8	1/4	14	50.0	30	13.5	

*Fittings not suitable for use with protective cap.

