

ALUMINUM CAMLOCK (E)



SIZE	PKG QTY	PART#
*3/4"	300	CGE-75-A
*1"	100	CGE-100-A
*1-1/4"	72	CGE-125-A
1-1/2"	100	CGE-150-A
2"	50	CGE-200-A
2-1/2"	50	CGE-250-A
3"	32	CGE-300-A
4"	18	CGE-400-A
6"	8	CGE-600-A
8"	4	CGE-800-A

*Special order only

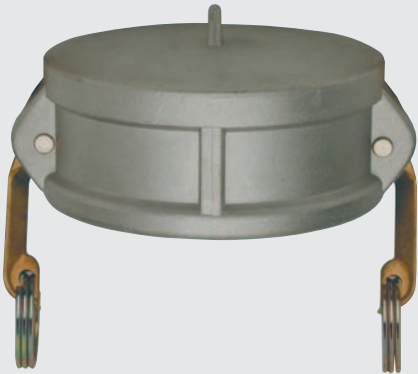
ALUMINUM CAMLOCK (F)



SIZE	PKG QTY	PART#
*3/4"	300	CGF-75-A
*1"	200	CGF-100-A
*1-1/4"	100	CGF-125-A
1-1/2"	75	CGF-150-A
2"	80	CGF-200-A
2-1/2"	50	CGF-250-A
3"	48	CGF-300-A
4"	24	CGF-400-A
6"	16	CGF-600-A
8"	N/A	CGF-800-A

*Special order only

ALUMINUM CAMLOCK (DC)



SIZE	PKG QTY	PART#
*3/4"	150	CDC-75-A
*1"	100	CDC-100-A
*1-1/4"	50	CDC-125-A
1-1/2"	50	CDC-150-A
2"	60	CDC-200-A
2-1/2"	40	CDC-250-A
3"	30	CDC-300-A
4"	24	CDC-400-A
6"	10	CDC-600-A
8"	N/A	CDC-800-A

*Special order only

ALUMINUM CAMLOCK (DP)



SIZE	PKG QTY	PART#
*3/4"	500	CDP-75-A
*1"	200	CDP-100-A
*1-1/4"	200	CDP-125-A
1-1/2"	120	CDP-150-A
2"	100	CDP-200-A
2-1/2"	100	CDP-250-A
3"	64	CDP-300-A
4"	45	CDP-400-A
6"	22	CDP-600-A
8"	N/A	CDP-800-A

*Special order only

Package quantity is only a guideline & not required quantity for ordering.