

**NEW**

**BRILLIANTSTEP™ IMAGE MATTING**



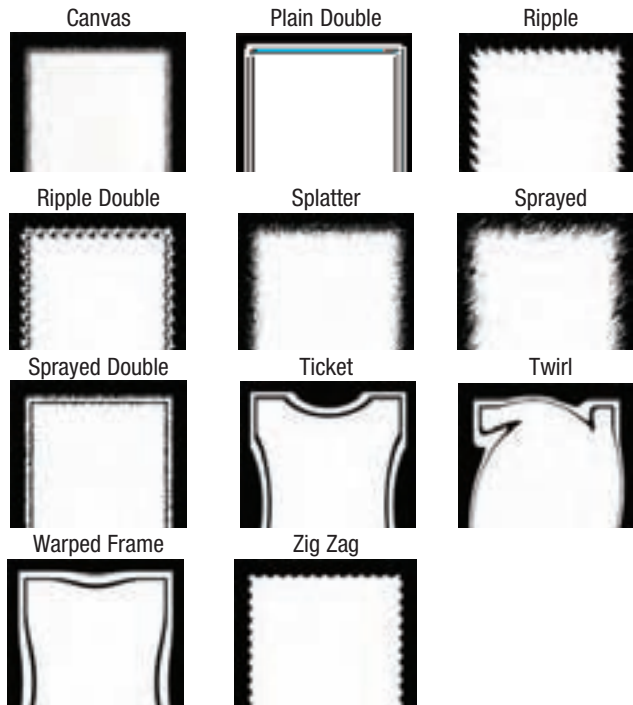
Call for Pricing

- **Sales Tip:** Truly multi-functional entrance mat that stops dirt and debris while improving aesthetic appeal and promoting business, product, or message.
- **Where to Specify:** Prominent entrances of light to heavy traffic where a long-lasting image is critical – Retail, restaurants, hotels, corporate, schools, etc...

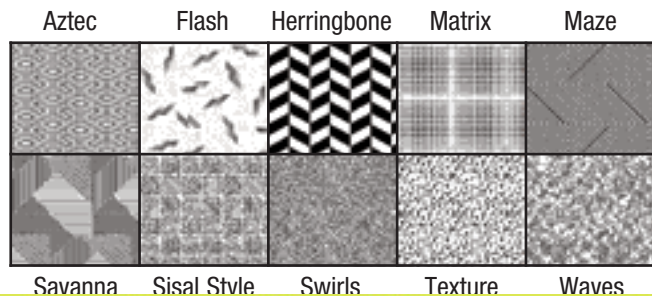
- Patented dye-injection process offers photo-realistic quality equivalent to 400 dpi resolution
- Color palette of 189 base colors with blending and shading to achieve over 700 shades of color
- Variety of background designs and borders to enhance your logo and camouflage dirt and stains
- Anti-slip backing to minimize mat movement
- 24 ozs of cut-pile nylon provides increased moisture retention



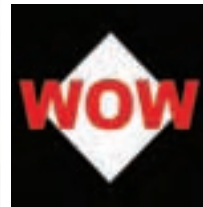
**Custom Border Designs**



**Custom Background Designs**



Standard Tufted  
8th Gauge  
64 dpi



BrilliantStep™  
20th Gauge  
400 dpi