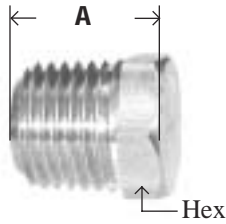


SOLID HEX HEAD PLUGS



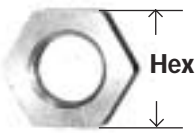
121AS

Part #	Thread size NPTF	A	Hex	Weight per piece. Lbs	List Price
28-201S	1/8"	0.55	0.43	0.02	1.18
28-202S	1/4"	0.62	0.56	0.05	1.38
28-203S	3/8"	0.66	0.68	0.07	2.37
28-204S	1/2"	0.81	0.87	0.12	3.46
28-205S	3/4"	0.92	1.06	0.24	5.27
28-206S	1"	1.00	1.31	0.38	11.93

LOCKNUT

- Jam Nuts
- Straight pipe thread

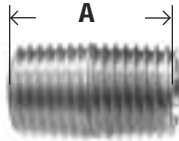
210P
21102
111A
111B



Part #	Thread size NPSM	Hex	Thickness	Weight per piece. Lbs	List Price
28-123	1/8"	0.68	0.19	0.02	0.89
28-124	1/4"	0.87	0.25	0.04	1.51
28-125	3/8"	1.00	0.31	0.04	1.42
28-126	1/2"	1.125	0.25	0.04	2.89

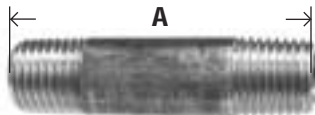
CLOSE NIPPLE

165
215PN
3326
112A
112B



Part #	Thread size NPTF	A	Weight per piece. Lbs	List Price
28-131	1/8"	0.75	0.01	0.56
28-132	1/4"	0.88	0.02	0.78
28-133	3/8"	1.00	0.05	1.01
28-134	1/2"	1.12	0.06	1.93
28-135	3/4"	1.31	0.11	2.00

LONG NIPPLE



113B
113A
166
3327
3331
215PNL

Part #	Thread size NPTF	A Length	Weight per piece. Lbs	List Price
28-140	1/8"	1.50	0.03	1.00
28-141	1/8"	2.00	0.04	1.45
28-142	1/8"	2.50	0.06	2.05
28-143	1/8"	3.00	0.06	2.23
28-144	1/4"	1.50	0.03	1.34
28-145	1/4"	2.00	0.05	1.64
28-146	1/4"	2.50	0.08	2.16
28-147	1/4"	3.00	0.10	3.00
28-148	3/8"	1.50	0.06	1.73
28-149	3/8"	2.00	0.10	2.50
28-150	3/8"	2.50	0.10	3.79
28-151	3/8"	3.00	0.13	4.13
28-152	1/2"	1.50	0.08	2.49
28-153	1/2"	2.00	0.12	3.50
28-154	1/2"	2.50	0.16	4.94
28-155	1/2"	3.00	0.20	6.42

Dimension data can change without notice.
Please call us when dimensions are critical.

