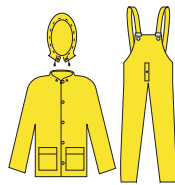


COMMODORE

6003 SUIT

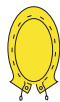
Complete 3 piece suit; jacket with detachable hood and bib pants.
S-X3 Yellow



6003



600C



600H

600C RAINCOAT

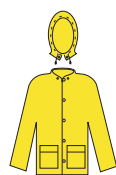
49 inch raincoat with cape-vented back; 2 patch pockets and detachable hood.
S-X3 Yellow

600H HOOD

Detachable hood.
One Size Yellow

600J JACKET

Jacket with detachable hood and storm fly front.
S-X3 Yellow



600J



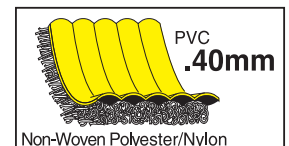
600BP

600BP BIB PANTS

Bib pants with fly and take up snaps at waist and ankles.
S-X3 Yellow

FEATURES

- Heavy ribbed pattern of PVC on a soft lining of blended polyester/nylon
- Stays soft in cold temperatures
- Absorbs perspiration in hot weather
- Provides warm lining in cold weather
PVC/Non-woven polyester/nylon



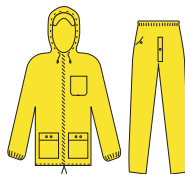
CHALLENGER

7002 SUIT

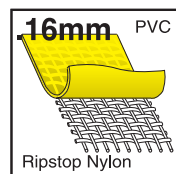
2 piece suit; jacket with an attached hood, cape vented back, zipper front, additional pocket, and built in visor. .16mm Nylon/PVC material. Elastic wrists and a drawstring bottom. Elastic waist pants with a reach through pocket.
M-X4 Yellow

7032 S-X5 Blue

7042 S-X3 Red



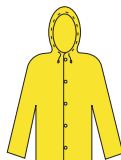
7002



7368C COAT

Luminator Reversible 48 inch raincoat, no hood, snaps for hood attachment. 2 slash pockets with reach through slit and underarm air vents with plastic grommets.
S-X3 Fluorescent Lime/Black
*See page 96 for image.

7368CR Reflective on Pg 96



710J

710J JACKET

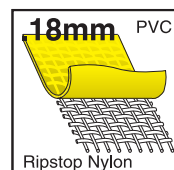
Jacket with a roll-up hood in an attached zippered collar. Constructed with .18mm nylon/PVC material with double stitching and taped seams.
S-X3 Yellow

710PW WAIST PANTS

Elastic waist pants with a plain front, and a reinforced crotch. Constructed with .18mm Nylon/PVC material with double stitching and taped seams.
S-X3 Yellow



710PW



FEATURES

- 16mm PVC over a tough nylon material
- Available in yellow, blue, and red
- Tough, yet lightweight
- Exceptional safety award
.16mm PVC/Nylon