



Floor Coatings

- Repair, resurface and protect industrial floors
- Smooth anti-slip finish
- High gloss provides higher visibility and improved safety

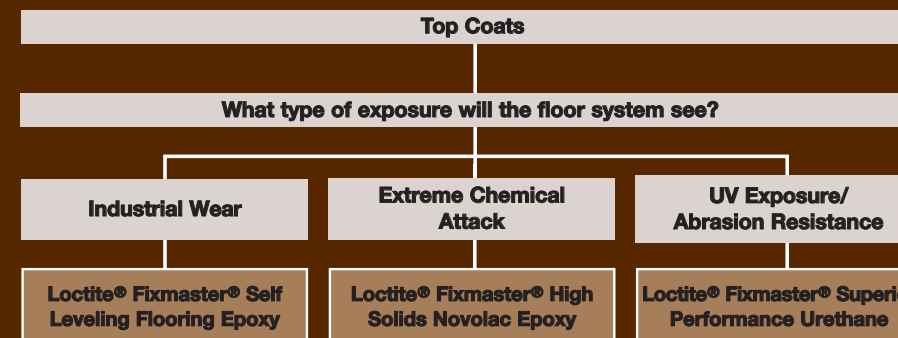
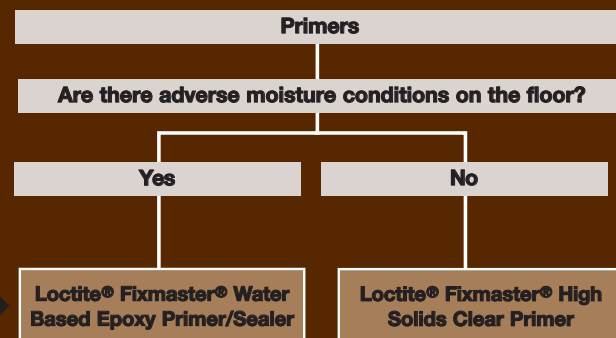


FLOOR COATINGS

Helpful Hints:

- Surface preparation before coating is critical. Make sure to follow instructions as to how to properly prepare the substrate to be coated
- Moisture detection prior to coating is very important. Detection techniques include:
 - Checking under mats in walking areas or under equipment to see if moisture exists
 - Tape the edges of a 4 mil, 2' X2' plastic sheet, leave several hours or overnight, and then check for condensation
 - Use a moisture meter or calcium chloride test to check for moisture

Solution



	Loctite® Fixmaster® Water Based Epoxy Primer/Sealer	Loctite® Fixmaster® High Solids Clear Primer	Loctite® Fixmaster® Self Leveling Flooring Epoxy	Loctite® Fixmaster® High Solids Novolac Epoxy	Loctite® Fixmaster® Superior Performance Urethane
Color	Clear	Clear	Deck Grey*	Grey	Deck Grey*
Work Life	90 min.	40 min.	30 min.	30 min.	4 hr.
Recoat Time (hours)	6-48 hr.	8-36 hr.	8-72 hr.	8-72 hr.	6-24 hr.
Cure Time (full service)	N.A.	N.A.	72 hr.	7 days	72 hr.
Coverage (sq. ft./gal)	250 sq. ft. @ 5-7 mils	200 sq. ft. @ 7-9 mils	105 sq. ft. @ 15 mils	100 sq. ft. @ 14-16 mils	250 sq. ft. @ 5-7mils
Common Sizes / Part Number	2 gallon kit - 40348††	1 gallon kit - 40319	1 gallon kit - 40332†	3.5 gallon resin - 40344 1.5 gallon hardener - 40345	1 gallon kit - 40311†

* Also available in clear, haze grey, sandstone, and red
† 5 gallon kits also available
†† 10 gallon kits also available

Additional Products			
Name	Features	Part #	Pkg. Size
Loctite® Fixmaster® Self Leveling Flooring Epoxy	High Build Additive for floors requiring films of 30 mil or greater	40343	25 lb. (add to a 5 gallon kit)
Loctite® Fixmaster® Self Leveling Epoxy	Fast Set Hardener for increased cure speed	40341	5 gallon pail
Loctite® Fixmaster® Superior Performance Urethane	Anti-slip Additive	40314 40315	10 oz. can 2 oz. bottle
Loctite® Fixmaster® Epoxy Floor Resurfacer	Trowel applied surfacing and leveling system	Requires both Resin and Aggregate 40326 40325	Resin for 20 sq. ft. 40 lb bag of cement

** Also available in deck grey, haze grey, and tile red.



Loctite® Fixmaster® Water Based Epoxy Primer/Sealer

Loctite® Fixmaster® Water Based Epoxy Primer/Sealer is a thin film, two-component, clear, water-based primer designed for use with most high performance floor coatings. It has a low viscosity for maximum penetration and can be brushed, rolled, or sprayed on. Use over new



Loctite® Fixmaster® High Solids Clear Primer

Loctite® Fixmaster® High Solids Clear Primer is a clear, high solids, high build primer designed for use with clear finish coats or any of the Loctite® Fixmaster® Self Leveling Flooring Epoxy systems. It is fast curing, low odor, and low viscosity. Reduces bubbling and pinholes that occur when coating porous



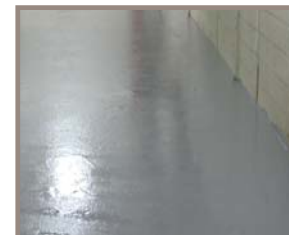
Loctite® Fixmaster® Self Leveling Flooring Epoxy

Loctite® Fixmaster® Self Leveling Flooring Epoxy is a two-component, 100% solids, high performance self-leveling floor coating. Provides a high gloss, seamless, hygienic surface that is extremely hard wearing and durable. This epoxy has zero VOCs, is extremely low odor, and offers high chemical resistance.



Loctite® Fixmaster® High Solids Novolac Epoxy

Loctite® Fixmaster® High Solids Novolac Epoxy is a two-component, high-build, high solids, novolac epoxy coating for surface protection against severe chemical attack. Provides a high gloss, seamless, hygienic surface that is extremely hard wearing and durable. Low odor and low



Loctite® Fixmaster® Superior Performance Urethane

Loctite® Fixmaster® Superior Performance Urethane is an interior or exterior high solids, polyester aliphatic floor coating. This coating offers high chemical resistance and can be brushed, rolled or sprayed on to a thickness of 3 to 4 mils. Also available for use as line



Call Toll Free: **1-866-711-4673**
 WebSales@GoodyearRubberProducts.com

We Ship World Wide