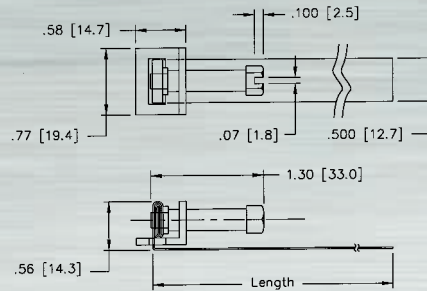


## WRAPLOCK® CLAMPS

### Ideal 59 Series (Tridon N/A)

1/2" wide galvanized steel band. Plated carbon steel screw and buckle. 5/16" hex-head screw. Made in one piece. Conforms to any shape. Covers 1" (25mm) to 14 1/2" (305mm) diameter to 48" (1219mm) length.



WRAPLOCK		CLAMPING RANGE					
SAE Sizes	Ideal Part No.	English (in.)		Metric (mm)		Length	
		Min. Dia.	Max. Dia.	Min. Dia.	Max. Dia.	English (in.)	Metric (mm)
<b>59</b>							
12	5912	1	3 1/2	25	89	12	305
15	5915	1	4 1/2	25	114	15	381
18	5918	1	5	25	127	18	457
24	5924	1	7	25	178	24	610
30	5930	1	9	25	229	30	762
48	5948	1	14 1/2	25	368	48	1219

## SINGLE EAR PINCH CLAMPS

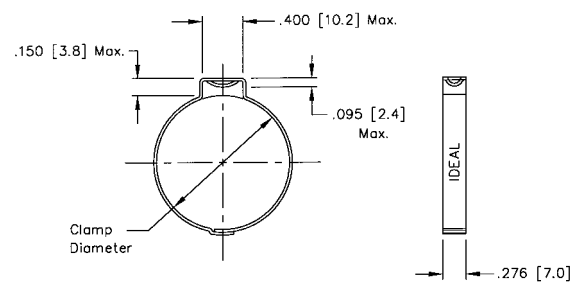
Pinch Clamps are designed to fit most popular polyethylene and polybutylene water service lines. They're perfect for sprinkler systems, irrigation systems and most other low pressure applications.

### Ideal 61 Series (Tridon N/A)

- 300 grade stainless steel construction for excellent corrosion resistance
- Welded construction for superior strength
- Quick, easy installation
- Permanent, tamper-proof 360° seal
- Compatible with most clinching tools

#### How to Determine Proper Clamp Size:

Measure actual O.D. of the hose on the fitting. Select the nominal size clamp nearest to, but always larger than, the O.D. of the hose on the fitting.



Measurements in illustrations are in inches [millimeters]

PINCH CLAMPS		CLAMPING RANGE			
Ideal Part No.	Nominal Diameter	English (in.)		Metric (mm)	
		Min. Dia.	Max. Dia.	Min. Dia.	Max. Dia.
<b>61</b>					
61198	3/4	0.669	0.779	17	20
61210	13/16	0.716	0.827	18	21
61256	1	0.898	1.008	23	25
61271	1 1/16	0.945	1.067	24	27
61316	1 1/4	1.122	1.244	29	31
61331	1 5/16	1.181	1.303	30	33
61346	1 3/8	1.240	1.362	32	34
61410	1 5/8	1.492	1.614	38	41
61425	1 11/16	1.551	1.673	40	42
61485	1 7/8	1.787	1.909	46	48