

# HEAVY-DUTY

We offer one of the most comprehensive lines of heavy-duty clamping products in the business. Our heavy-duty products include T-Bolts, Spring Loaded T-Bolts, V-Bands, Heavy-Duty and Constant Tension worm drive clamps. We cover the world of heavy-duty truck, off-road and industrial applications. We can even custom engineer a product that will meet your special fastening requirements.

## T-BOLTS

Heavy-duty T-Bolt clamps provide uniform sealing pressure for a positive, reliable seal. Specifically designed for use in the high vibration and large diameter applications common in heavy truck, off-road equipment and industrial machinery, our T-Bolts feature a 3/4" wide stainless steel band and welded construction for reliability. They are available in part or all stainless steel construction and in Standard T-Bolt, Channel Bridge T-Bolt and Spring Loaded T-Bolt designs.

### Standard T-Bolts – Ideal 30010 Series/Tridon 813 Series

The most widely used T-Bolt clamp design. Typical applications include truck air intake systems, cold side charge air systems, off-road equipment and industrial machinery.

Band/Liner: 3/4" width, 201/301 stainless steel.

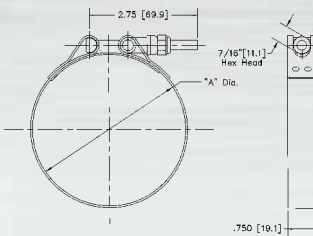
Bolt: 1/4"-28, plated steel.

Nut: 7/16" hex, nylon insert, plated steel locknut.

Trunnion: Plated steel.

Covers clamping ranges from 1 3/8" to 8 1/2".

*Additional clamping ranges and designs are available on request – Contact Ideal for information.*



### Channel Bridge T-Bolts – Ideal 30020 Series/Tridon 814 Series

Channel bridge T-Bolts provide the added insurance of a rigid bridge liner to help prevent leak paths in more demanding applications. Typical applications include truck air intake systems, cold side charge air systems and industrial equipment and machinery.

Band/Bridge: 3/4" width, 201/301 stainless steel.

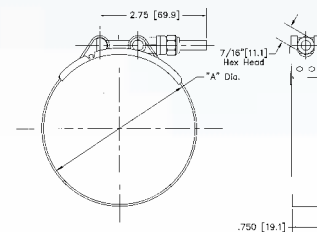
Bolt: 1/4"-28 plated steel.

Nut: 7/16" hex, nylon insert, plated steel locknut.

Trunnion: Plated steel.

Covers clamping ranges from 1 3/8" to 8 1/2".

*Additional clamping ranges and designs are available on request – Contact Ideal for information.*



### Spring Loaded T-Bolts – Ideal 30030 Series/Tridon 819 Series

The helical spring design provides the self-compensating (constant tension) feature that prevents the development of leak paths due to temperature fluctuations. Typical applications include heavy truck charge air and cooling systems.

Band/Bridge: 3/4" width, 201/301 stainless steel.

Bolt: 1/4"-28 plated steel. Spring: Plated steel.

Nut: 7/16" hex, nylon insert, plated steel locknut.

Trunnion: Plated steel.

Covers clamping ranges from 3 1/16" to 4 9/16".

*Additional clamping ranges and designs are available on request – Contact Ideal for information.*

