

SMALL DIAMETER CLAMPS

Micro-Gear® Clamps

Micro-Gear clamps are tiny, tough and precision engineered for use in such small hose applications as emission control, fuel lines and vacuum hoses. Their slim, 5/16" band and low profile housing make them easy to install in confined areas.

Ideal 62P Series Tridon 325 Series

Screw: 1/4" hex-head.
Plated carbon steel.

Band and housing: 5/16" design.
201/301 stainless steel.

Tridon 350 Series (Ideal N/A) Tridon Automotive Series "MAH"

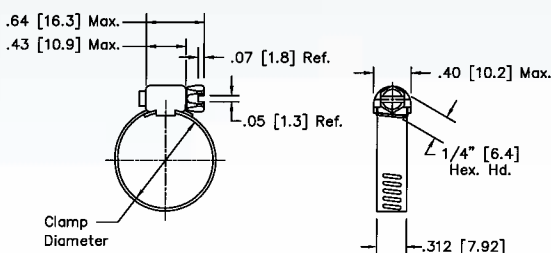
Screw: 1/4" hex-head.
410 stainless steel.

Band and housing: 5/16" design.
201/301 grade stainless steel.

Ideal 62M Series Tridon 345 Series

Screw: 1/4", high-nickel grade stainless steel.

Band and housing: 5/16" design.
High-nickel grade stainless steel.



| MICRO GEAR CLAMPS | | | | | | | | CLAMPING RANGE | | | | | |
|-------------------|---------------------|-----------------|----------------------|-----------------|----------------|---------------------------|---------------|----------------|-------------|----------|----------------|-----------|--|
| SAE Sizes | Ideal Part No. | Tridon Part No. | Ideal Part No. | Tridon Part No. | Ideal Part No. | Tridon Part No. | English (in.) | | Metric (mm) | | Fits Hose I.D. | | |
| | | | | | | | Min.Dia. | Max.Dia. | Min.Dia. | Max.Dia. | Min.(in.) | Max.(in.) | |
| | 62P | 325 | 62M | 345 | N/A | 350 ⁽¹⁾ | | | | | | | |
| 4 | 6204 ⁽²⁾ | 325-004 | 62604 ⁽⁴⁾ | 345-004 | - | 350-004 | 1/4 | 5/8 | 6 | 16 | 1/8 | 5/16 | |
| 5 | 62P05 | 325-005 | 62M05 | 345-005 | - | 350-005 | 1/4 | 11/16 | 7 | 17 | 1/8 | 3/8 | |
| 6 | 6206 ⁽³⁾ | 325-006 | 62606 | 345-006 | - | 350-006 | 5/16 | 7/8 | 8 | 22 | 1/4 | 7/16 | |
| 8 | 62P08 | 325-008 | 62M08 | 345-008 | - | 350-008 | 3/8 | 1 | 10 | 25 | 5/16 | 1/2 | |
| 10 | 62P10 | 325-010 | 62M10 | 345-010 | - | 350-010 | 3/8 | 1 1/16 | 10 | 27 | 5/16 | 5/8 | |
| 12 | 62P12 | 325-012 | 62M12 | 345-012 | - | 350-012 | 1/2 | 1 1/4 | 13 | 32 | 5/8 | 3/4 | |
| 16 | 62P16 | 325-016 | 62M16 | 345-016 | - | 350-016 | 1/2 | 1 1/2 | 13 | 38 | 5/8 | 1 | |
| 20 | 62P20 | 325-020 | 62M20 | 345-020* | - | 350-020 | 3/4 | 1 3/4 | 19 | 44 | 1 | 1 1/4 | |
| 24 | 62P24 | 325-024 | 62M24 | 345-024* | - | 350-024 | 1 | 2 | 26 | 51 | 1 1/4 | 1 1/2 | |
| 28 | 62P28 | 325-028 | 62M28 | 345-028* | - | 350-028 | 1 1/4 | 2 1/4 | 32 | 57 | 1 1/2 | 1 3/4 | |
| 30 | 62P30 | 325-030* | 62M30 | 345-030* | - | 350-030 | 1 3/8 | 2 3/8 | 35 | 60 | 1 5/8 | 1 7/8 | |
| 32 | 62P32 | 325-032 | 62M32 | 345-032* | - | 350-032 | 1 1/2 | 2 1/2 | 38 | 63 | 1 3/4 | 2 | |
| 36 | 62P36 | 325-036 | 62M36 | 345-036* | - | 350-036 | 1 3/4 | 2 3/4 | 45 | 70 | 2 | 2 1/4 | |
| 44 | 62P44 | 325-044* | 62M44 | 345-044* | - | 350-044 | 2 1/4 | 3 1/4 | 57 | 82 | 2 1/4 | 2 3/4 | |
| 48 | 62P48 | 325-048* | 62M48 | 345-048* | - | 350-048 | 2 1/2 | 3 1/2 | 64 | 89 | 2 1/2 | 3 | |

⁽¹⁾ Automotive Series "MAH"

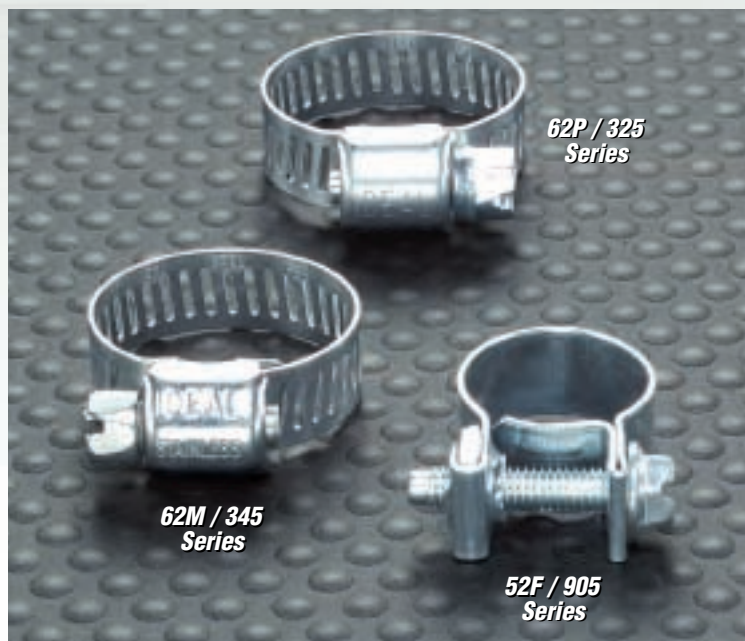
⁽²⁾ Old #6202

⁽³⁾ Old #6203

⁽⁴⁾ Old #62602

Additional sizes available - Contact Ideal for information

* Non-stocking item



Fuel Injection Clamps

Fuel injection system clamps are designed to provide the uniform sealing pressure required on fuel injection hose.

They feature non-perforated rolled-edge bands with a special nut and bolt-tightening design.

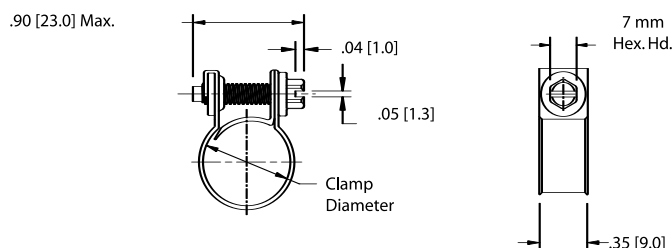
Ideal 52F Series / Tridon 905 Series Tridon Automotive Series "F.I."

Screw: 7mm hex-head.
Zinc-plated, clear chromate, carbon steel.

Band: 9mm wide.
Zinc-plated, clear chromate, carbon steel.

| FUEL INJECTION CLAMPS | | | | CLAMPING RANGE | | | | Fits Hose I.D. |
|-----------------------|----------------|---------------------------|---------------|----------------|-------------|----------|-------|----------------|
| SAE Sizes | Ideal Part No. | Tridon Part No. | English (in.) | | Metric (mm) | | | |
| | | | Min.Dia. | Max.Dia. | Min.Dia. | Max.Dia. | | |
| | 52F | 905 ⁽¹⁾ | | | | | | |
| 4 | 52F13 | 905-004 | 7/16 | 1/2 | 11 | 13 | 1/4" | |
| 6 | 52F15 | 905-006 | 1/2 | 9/16 | 13 | 15 | 5/16" | |
| 8 | 52F16 | 905-008 | 9/16 | 5/8 | 14 | 16 | 3/8" | |

⁽¹⁾ Automotive Series "F.I."



N/A - Not Available