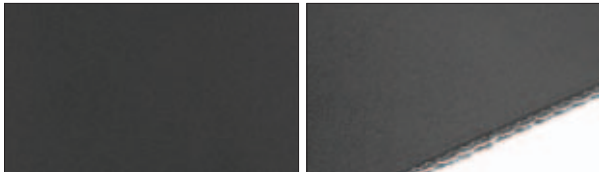


# Variety of surfaces/styles of fabric-based belts (selection only)

## Belt surface or style

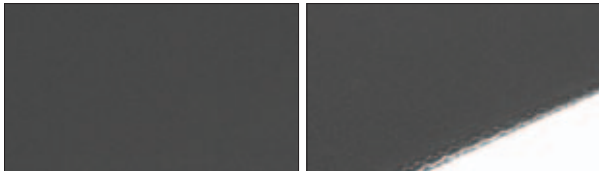
To fulfill a specific application need, a process requirement or a defined function the belt surface/style or the material inherent properties play a key role. See following some of the variety of surfaces, styles and properties.

Pictures: Product view from top and bird's view (running direction from left to right).



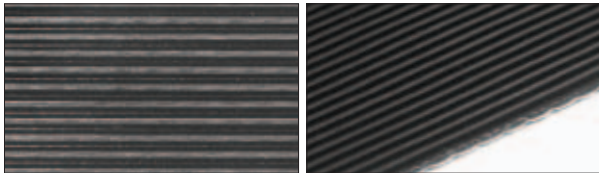
### Blank smooth surface

Available properties: Adhesive, Medium adhesive, Super adhesive, Non-adhesive

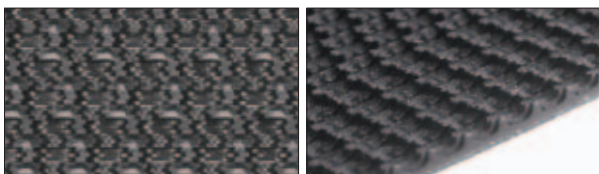


### Super mat finish (sand finish)

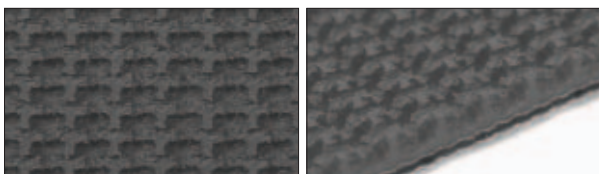
Available property: Non-adhesive



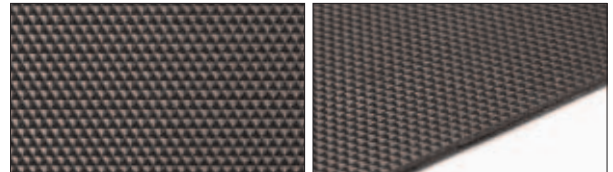
### Longitudinal grooved structure



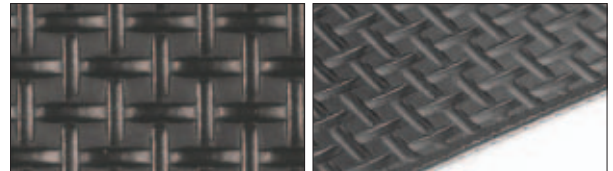
### Jink wave (sine wave) grip structure



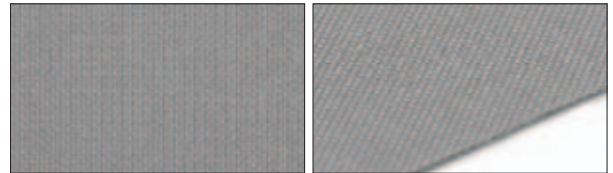
### Grip structure



### Waffle structure (negative pyramid)



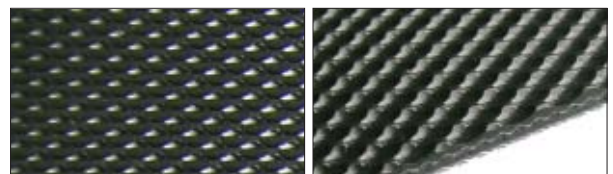
### Quadrillé (quadrangular) structure



### Impregnated fabric surface (fine or rough structure)



### Nonwoven (fleece) structure



### Elliptical smooth netting structure (either positive or negative)