



Eagle Pd™ Sprockets for 25mm wide belt

Sprocket Face Width = 26 mm, Pitch = 8 mm

SYNCHRONOUS

| Sprocket Part Number | Hub* | Bore Range (inches) | | No. of Teeth | Type* | Pitch Diameter (inches) | O | I | E | H | T | L | Material | Wt. (lbs) | Approx. WR ² (lbs.-ft ²) |
|----------------------|------|---------------------|--------|--------------|-------|-------------------------|----------------------------------|--------|--------|--------|--------|--------|----------|-----------|---|
| | | MIN. | MAX. | | | | (inches) (Refer to Type I below) | | | | | | | | |
| M-20S-MPB | MPB | 0.5000 | 1.0630 | 20 | 1 | 2.0050 | 1.9508 | - | 0.4700 | 1.6000 | - | 1.5000 | Al | 0.33 | 0.0009 |
| M-22S-MPB | MPB | 0.5000 | 1.2200 | 22 | 1 | 2.2060 | 2.1513 | - | 0.4700 | 1.8100 | - | 1.5000 | Al | 0.41 | 0.0015 |
| M-24S-MPB | MPB | 0.5000 | 1.3390 | 24 | 1 | 2.4060 | 2.3518 | - | 0.6300 | 2.0100 | - | 1.6500 | Al | 0.55 | 0.0023 |
| M-26S-MPB | MPB | 0.5000 | 1.5350 | 26 | 1 | 2.6070 | 2.5523 | - | 0.6300 | 2.2800 | - | 1.6500 | Al | 0.68 | 0.0034 |
| M-28S-MPB | MPB | 0.5000 | 1.6140 | 28 | 1 | 2.8070 | 2.7528 | - | 0.6300 | 2.4400 | - | 1.6500 | Al | 0.80 | 0.0047 |
| M-30S-MPB | MPB | 0.5000 | 1.7720 | 30 | 1 | 3.0080 | 2.9533 | - | 0.6300 | 2.6400 | - | 1.6500 | Al | 0.93 | 0.0063 |
| M-32S-MPB | MPB | 0.5000 | 1.8900 | 32 | 1 | 3.2080 | 3.1538 | - | 0.6300 | 2.8300 | - | 1.6500 | Al | 1.08 | 0.0083 |
| M-34S-MPB | MPB | 0.5000 | 2.0080 | 34 | 1 | 3.4090 | 3.3543 | - | 0.6300 | 3.0300 | - | 1.6500 | Al | 1.23 | 0.0108 |
| M-36S-MPB | MPB | 0.5000 | 2.1650 | 36 | 1 | 3.6090 | 3.5549 | - | 0.6300 | 3.2300 | - | 1.6500 | Al | 1.40 | 0.0138 |
| M-38S-MPB | MPB | 0.5000 | 2.2830 | 38 | 1 | 3.8100 | 3.7554 | - | 0.6300 | 3.4300 | - | 1.6500 | Al | 1.57 | 0.0174 |
| M-40S-MPB | MPB | 0.5000 | 2.4410 | 40 | 1 | 4.0100 | 3.9559 | - | 0.6300 | 3.6200 | - | 1.6500 | Al | 1.75 | 0.0217 |
| M-56S-MPB** | MPB | 0.5000 | 3.5040 | 56 | 1 | 5.6140 | 5.5600 | - | 0.6300 | 5.2400 | - | 1.6500 | Al | 3.53 | 0.0903 |
| M-90S-MPB** | MPB | 1.0000 | 2.8740 | 90 | 2 | 9.0230 | 8.9686 | 8.0299 | 0.6300 | 4.7200 | 0.3150 | 1.6500 | Al | 5.29 | 0.2867 |

**These sprocket sizes are non-stock items.

Eagle Pd™ Sprockets for 50mm wide belt

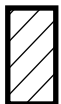
Sprocket Face Width = 51 mm, Pitch = 8 mm

| Sprocket Part Number | Hub* | Bore Range (inches) | | No. of Teeth | Type* | Pitch Diameter (inches) | O | I | E | H | T | L | Material | Wt. (lbs) | Approx. WR ² (lbs.-ft ²) |
|----------------------|------|---------------------|-------|--------------|-------|-------------------------|----------------------------------|--------|--------|--------|--------|--------|----------|-----------|---|
| | | MIN. | MAX. | | | | (inches) (Refer to Type I below) | | | | | | | | |
| L-20S-MPB | MPB | 0.500 | 1.063 | 20 | 1 | 2.005 | 1.9508 | - | 0.4700 | 1.6000 | - | 2.4800 | Al | 0.55 | 0.0027 |
| L-22S-MPB | MPB | 0.500 | 1.220 | 22 | 1 | 2.206 | 2.1513 | - | 0.4700 | 1.8100 | - | 2.4800 | Al | 0.69 | 0.0036 |
| L-24S-MPB | MPB | 0.500 | 1.339 | 24 | 1 | 2.406 | 2.3518 | - | 0.6300 | 2.0100 | - | 2.6400 | Al | 0.90 | 0.0054 |
| L-26S-MPB | MPB | 0.500 | 1.535 | 26 | 1 | 2.607 | 2.5523 | - | 0.6300 | 2.2800 | - | 2.6400 | Al | 1.10 | 0.0072 |
| L-28S-MPB | MPB | 0.500 | 1.614 | 28 | 1 | 2.807 | 2.7528 | - | 0.6300 | 2.4400 | - | 2.6400 | Al | 1.29 | 0.0089 |
| L-30S-MPB | MPB | 0.500 | 1.772 | 30 | 1 | 3.008 | 2.9533 | - | 0.6300 | 2.6400 | - | 2.6400 | Al | 1.51 | 0.0111 |
| L-32S-MPB | MPB | 0.500 | 1.890 | 32 | 1 | 3.208 | 3.1538 | - | 0.6300 | 2.8300 | - | 2.6400 | Al | 1.74 | 0.0138 |
| L-34S-MPB | MPB | 0.500 | 2.008 | 34 | 1 | 3.409 | 3.3543 | - | 0.6300 | 3.0300 | - | 2.6400 | Al | 1.99 | 0.0179 |
| L-36S-MPB | MPB | 0.500 | 2.165 | 36 | 1 | 3.609 | 3.5549 | - | 0.6300 | 3.2300 | - | 2.6400 | Al | 2.25 | 0.0228 |
| L-38S-MPB | MPB | 0.500 | 2.283 | 38 | 1 | 3.810 | 3.7554 | - | 0.6300 | 3.4300 | - | 2.6400 | Al | 2.53 | 0.0287 |
| L-40S-MPB | MPB | 0.500 | 2.441 | 40 | 1 | 4.010 | 3.9559 | - | 0.6300 | 3.6200 | - | 2.6400 | Al | 2.83 | 0.0357 |
| L-56S-MPB** | MPB | 0.500 | 3.504 | 56 | 1 | 5.614 | 5.5600 | - | 0.6300 | 5.2400 | - | 2.6400 | Al | 5.65 | 0.1470 |
| L-90S-MPB** | MPB | 1.000 | 2.874 | 90 | 2 | 9.023 | 8.9686 | 8.0299 | 0.6300 | 4.7200 | 0.3937 | 2.6400 | Al | 8.16 | 0.4820 |

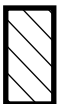
**These sprocket sizes are non-stock items.

NOTES:

1. Al = Aluminum (anodized).
2. Sprockets are only available in MPB.
3. The "L" (50 mm width) and "M" (25 mm width) belts and sprockets are non-stock items which need to be quoted and may have a longer lead time.
4. Sprocket dimensions and material are subject to change.
5. Please contact Goodyear for sprocket sizes and materials not listed in this manual.



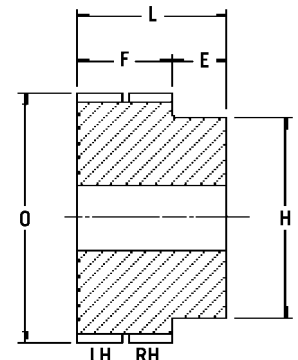
LH



RH

LH is the left-hand helix.
RH is the right-hand helix.

Note: For proper installation, orientation of teeth must be in the same direction on all sprockets in the drive.



*TYPE I