

Cam and Groove Couplings

- Sizes available from 1/2" through 8"
- Swaged connections available
- Interchange with products manufactured to MIL-C-27487F
- Available in aluminum, brass, malleable iron, stainless steel, plastic

EZ Boss-Lock



Boss-Lock



Dixon

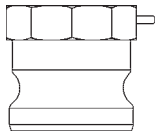


- Extremely easy to open and close without inserting clips or pins. Ideal for vibration tolerant locking.
- Resistant to accidental disconnection when dragged.

- Cast-in lugs allow safety clips to be attached once the lugs are passed through slots in the special cam lever arms. These clips prevent the coupler from being unlocked until they are removed, providing a **positive locking action**.

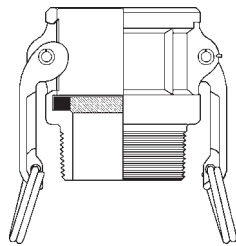
- Durable stainless steel cam arm pins will not rust or bind.
- Recess holds gasket firmly in place, ensuring proper placement.
- Long shank design allows proper banding thus eliminating the major cause of hose damage.

See Current Dixon Price List for complete pricing and part#'s.



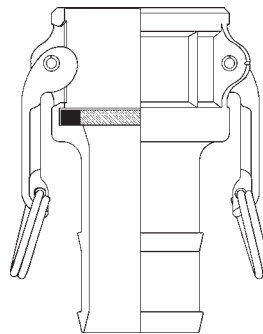
Type A

(male adapter x female NPT)



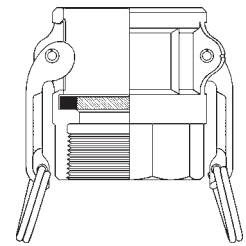
Type B

(female coupler x male NPT)



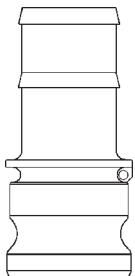
Type C

(female coupler x hose shank)



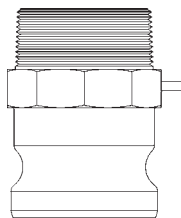
Type D

(female coupler x female NPT)



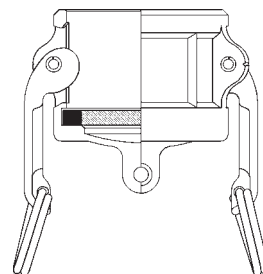
Type E

(male adapter x hose shank)



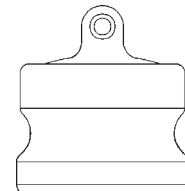
Type F

(male adapter x male NPT)



Type DC *

(dust cap)



Type DP *

(dust plug)

* Dust caps and dust plugs are *not* to be used in pressure applications for safety and environmental reasons.