

Encapsulated 2-way 3 Piece Stainless Steel Ball Valve



- Meets 3A sanitary standard 68-00 (Authorization number 1022).
- Compact design for areas with tight space restrictions
- Full port design offers lower pressure drop and a less turbulent flow
- Balanced encapsulated construction minimizes cold-flow of seats
- Precision stainless steel balls reduce torque and friction losses while extending seat life
- Blow-out proof stem
- Live-loaded stem packing
- ISO 5211 mounting pad
- Lockable handle can prevent accidental actuation when used
- ID polish is R_a 32 minimum
- Rated to **1,000 PSI** WOG

Bradford™ quality: maintaining the **A₃** standard

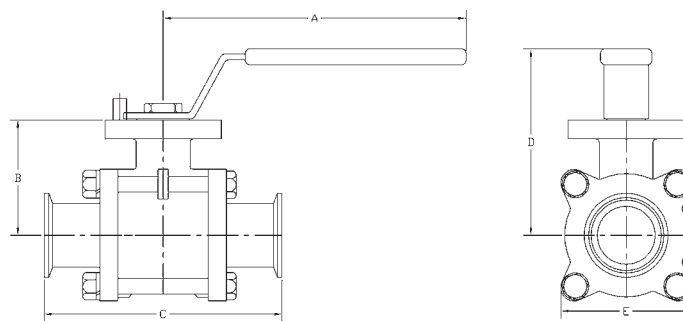
The Sanitary Standards were originally created by the dairy industry as a voluntary benchmark for sanitary safety. The standards are still developed collaboratively by a group of processors, suppliers, and sanitation specialists.

Dixon Sanitary has earned the 3A symbol through the Third Party Verification (TPV) program, which requires a professional assessment rather than voluntary compliance to make certain each product conforms in all respects to the published standard. The standards are accepted by the USDA and USFDA.

Bradford™ Sanitary ball valves meet 3A Sanitary Standards for Valves for Milk and Milk Products, Number 68-00 (Authorization number 1022). See the Dixon Sanitary website, www.dixonvalve.com, to download a PDF of the certificate or call Dixon Sanitary.

Dixon Sanitary is proud to be a participant in the 3A TPV program.

Dimensions for BV2C



Size (in.)	Part Number	Dimensions (inches)					Assembly torque (in-lbs.)	Break torque (in-lbs.)	Weight (lbs.)
		A	B	C	D	E			
½"	BV2C*-050CC-A	4.7	1.5	4.3	3	1.9	160	50	1.5
¾"	BV2C*-075CC-A	4.7	1.8	4.7	3.3	2.2	160	25	1.9
1"	BV2C*-100CC-A	5.2	2.1	4.9	3.6	2.4	160	90	2.7
1½"	BV2C*-150CC-A	7.2	2.7	5.6	4.4	3.1	200	110	4.8
2"	BV2C*-200CC-A	7.2	3.1	6.4	4.8	3.7	212	300	8.9
2½"	BV2C*-250CC-A	14.6	3.8	7.8	5.2	4.8	221	400	18.7
3"	BV2C*-300CC-A	15.7	4.2	9.0	5.7	5.4	239	550	29.7
4"	BV2C*-400CC-A	15.7	5.3	9.5	6.8	8.8	266	750	43.6

- (*) see seat material options chart on page 119.
- All dimensions are in inches. Dimensions are approximate. Engineering dimensions are available upon request. Specifications are subject to change without notice.