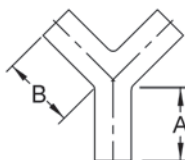




Miscellaneous Tube OD Configurations

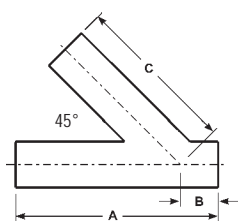
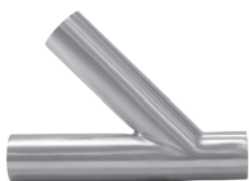
Weld Y - B28W



Tube O.D.	Dimensions		Nominal Wall	Part Number
	A	B		
1"	2.000	2.438	.065	B28W-R100U
1½"	2.000	2.438	.065	B28W-R150U
2"	2.625	3.250	.065	B28W-R200U
3"	4.000	4.875	.065	B28W-R300U
4"	5.375	5.375	.083	B28W-R400U

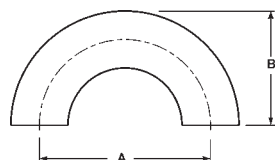
Weld Laterals- B28WA

H



Tube O.D.	Dimensions			Part Number
	A	B	C	
1"	6.000	1.000	5.000	B28WA-R100U
1½"	7.375	1.188	6.188	B28WA-R150U
2"	8.750	1.625	7.125	B28WA-R200U
2½"	10.000	1.500	8.500	B28WA-R250U
3"	10.750	1.875	8.875	B28WA-R300U
4"	12.812	2.015	10.750	B28WA-R400U
6"	18.000	3.000	14.500	B28WA-R600U

Weld 180° Return Bends - B2WUL



Tube O.D.	Dimensions		Nominal Wall	Part Number
	A	B		
1"	3.000	2.000	.065	B2WUL-R100U
1½"	4.500	3.000	.065	B2WUL-R150U
2"	6.000	4.000	.065	B2WUL-R200U
3"	9.000	6.000	.065	B2WUL-R300U
4"	12.000	8.000	.083	B2WUL-R400U

- Bends are the standard 1.5 x tube diameter.