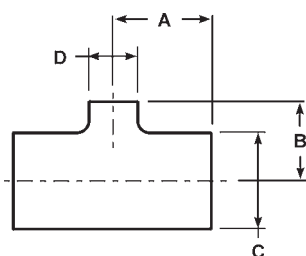
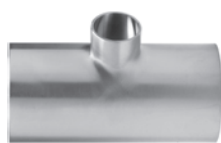




## Butt Weld Tees



### Butt Weld Reducing Tees, #7 finish - B7RWWW



G

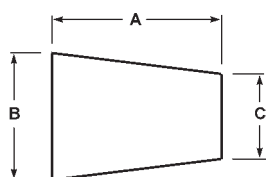
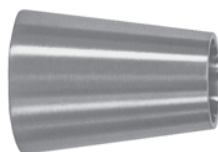
Tube O.D.	Dimensions				Nom. Wall	304	316L
	A	B	C	D		Part Number	Part Number
3/4" x 1/2"	2.000	2.000	.750	.500	.065	---	B7RWWW-R7550P
1" x 1/2"	2.125	2.125	1.000	.500	.065	---	B7RWWW-R10050P
1" x 3/4"	2.125	2.125	1.000	.750	.065	---	B7RWWW-R10075P
1 1/2" x 1/2"	2.375	2.375	1.500	.500	.065	---	B7RWWW-R15050P
1 1/2" x 3/4"	2.375	2.375	1.500	.750	.065	---	B7RWWW-R15075P
1 1/2" x 1"	1.656	1.375	1.500	1.000	.065	B7RWWW-G150100P	B7RWWW-R150100P
2" x 1/2"	2.875	2.625	2.000	.500	.065	---	B7RWWW-R20050P
2" x 3/4"	2.875	2.625	2.000	.750	.065	---	B7RWWW-R20075P
2" x 1"	2.062	1.625	2.000	1.000	.065	B7RWWW-G200100P	B7RWWW-R200100P
2" x 1 1/2"	2.062	1.906	2.000	1.500	.065	B7RWWW-G200150P	B7RWWW-R200150P
2 1/2" x 1 1/2"	2.344	2.156	2.500	1.500	.065	B7RWWW-G250150P	B7RWWW-R250150P
2 1/2" x 2"	2.344	2.312	2.500	2.000	.065	B7RWWW-G250200P	B7RWWW-R250200P
3" x 1 1/2"	2.594	2.406	3.000	1.500	.065	B7RWWW-G300150P	B7RWWW-R300150P
3" x 2"	2.594	2.562	3.000	2.000	.065	B7RWWW-G300200P	B7RWWW-R300200P
3" x 2 1/2"	2.594	2.594	3.000	2.500	.083	B7RWWW-G300250P	B7RWWW-R300250P
4" x 1 1/2"	3.438	2.906	4.000	1.500	.083	B7RWWW-G400150P	B7RWWW-R400150P
4" x 2"	3.438	3.062	4.000	2.000	.083	B7RWWW-G400200P	B7RWWW-R400200P
4" x 2 1/2"	3.438	3.094	4.000	2.500	.083	B7RWWW-G400250P	B7RWWW-R400250P
4" x 3"	3.438	3.094	4.000	3.000	.083	B7RWWW-G400300P	B7RWWW-R400300P
6" x 2"	5.625	4.500	6.000	2.000	.109	B7RWWW-G600200P	B7RWWW-R600200P
6" x 3"	5.625	4.875	6.000	3.000	.109	B7RWWW-G600300P	B7RWWW-R600300P
6" x 4"	5.625	5.125	6.000	4.000	.109	B7RWWW-G600400P	B7RWWW-R600400P

Note: #3 and #5 finishes are also available.

## Butt Weld Reducers



### Butt Weld Concentric Reducers, #7 finish - B31W



Tube O.D.	Dimensions			Nom. Wall	304	316L
	A	B	C		Part Number	Part Number
3/4" x 1/2"	1.000	.750	.500	.065	---	B31W-R7550P
1" x 1/2"	2.000	1.000	.500	.065	---	B31W-R10050P
1" x 3/4"	1.000	1.000	.750	.065	---	B31W-R10075P
1 1/2" x 1/2"	4.000	1.500	.500	.065	---	B31W-R15050P
1 1/2" x 3/4"	3.000	1.500	.750	.065	---	B31W-R15075P
1 1/2" x 1"	2.000	1.500	1.000	.065	B31W-G150100P	B31W-R150100P
2" x 1/2"	6.000	2.000	.500	.065	---	B31W-R20050P
2" x 3/4"	5.000	2.000	.750	.065	---	B31W-R20075P
2" x 1"	4.000	2.000	1.000	.065	B31W-G200100P	B31W-R200100P
2" x 1 1/2"	2.000	2.000	1.500	.065	B31W-G200150P	B31W-R200150P
2 1/2" x 1 1/2"	4.000	2.500	1.500	.065	B31W-G250150P	B31W-R250150P
2 1/2" x 2"	2.000	2.500	2.000	.065	B31W-G250200P	B31W-R250200P
3" x 1"	8.000	3.000	1.000	.065	B31W-G300100P	B31W-R300100P
3" x 1 1/2"	6.000	3.000	1.500	.065	B31W-G300150P	B31W-R300150P
3" x 2"	4.000	3.000	2.000	.065	B31W-G300200P	B31W-R300200P
3" x 2 1/2"	2.000	3.000	2.500	.065	B31W-G300250P	B31W-R300250P
4" x 1 1/2"	10.000	4.000	1.500	.083	B31W-G400150P	B31W-R400150P
4" x 2"	8.000	4.000	2.000	.083	B31W-G400200P	B31W-R400200P
4" x 2 1/2"	6.000	4.000	2.500	.083	B31W-G400250P	B31W-R400250P
4" x 3"	4.000	4.000	3.000	.083	B31W-G400300P	B31W-R400300P
6" x 2"	5.500	6.000	2.000	.109	B31W-G600200P	B31W-R600200P
6" x 3"	5.500	6.000	3.000	.109	B31W-G600300P	---
6" x 4"	5.500	6.000	4.000	.109	B31W-G600400P	---
8" x 4"	6.000	8.000	4.000	.120	B31W-G800400P	B31W-R800400P
8" x 6"	6.000	8.000	6.000	.120	B31W-G800600P	B31W-R800600P

Note: #3 and #5 finishes are also available.