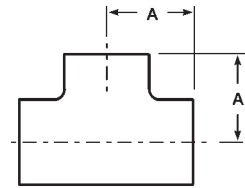
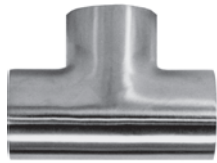




## Buttweld Tees

### **A** Buttweld Short Tees, #7 finish - *B7WWW*

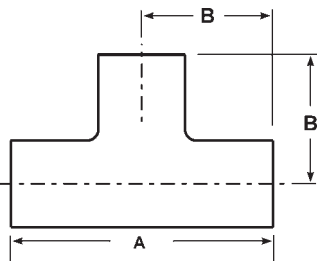


Tube O.D.	Dimension A	Nominal Wall	304 Part Number	316L Part Number
1"	1.125	.065	B7WWW-G100P	B7WWW-R100P
1½"	1.656	.065	B7WWW-G150P	B7WWW-R150P
2"	2.062	.065	B7WWW-G200P	B7WWW-R200P
2½"	2.344	.065	B7WWW-G250P	B7WWW-R250P
3"	2.594	.065	B7WWW-G300P	B7WWW-R300P
4"	3.438	.083	B7WWW-G400P	B7WWW-R400P

Note: #3 and #5 finishes are available.

**G**

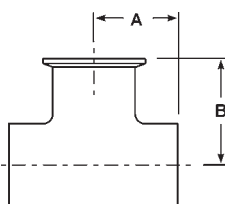
### **A** Buttweld Long Tees, #7 finish - *B7W*



Tube O.D.	Dimensions A	B	Nominal Wall	304 Part Number	316L Part Number
½"	3.750	1.875	.065	---	B7W-R50P
¾"	4.000	2.000	.065	---	B7W-R75P
1"	3.750	1.875	.065	B7W-G100P	B7W-R100P
1½"	4.500	2.250	.065	B7W-G150P	B7W-R150P
2"	6.000	3.000	.065	B7W-G200P	B7W-R200P
2½"	6.000	3.000	.065	B7W-G250P	B7W-R250P
3"	6.500	3.250	.065	B7W-G300P	B7W-R300P
4"	7.750	3.875	.083	B7W-G400P	B7W-R400P
6"	11.250	5.625	.109	B7W-G600P	---
8"	14.000	7.000	.120	B7W-G800P	B7W-R800P

Note: #3 and #5 finishes are available.

### **A** Buttweld Run x Clamp Branch Tees, #7 finish - *B7WWM*



Tube O.D.	Dimensions A	B	Nominal Wall	304 Part Number	316L Part Number
¾"	2.000	2.500	.065	---	B7WWM-R75
1½"	1.656	2.156	.065	B7WWM-G150	B7WWM-R150
2"	2.062	2.562	.065	B7WWM-G200	B7WWM-R200
2½"	2.344	2.844	.065	---	B7WWM-R250
3"	2.594	3.094	.065	B7WWM-G300	---
4"	3.438	4.063	.083	B7WWM-G400	---