

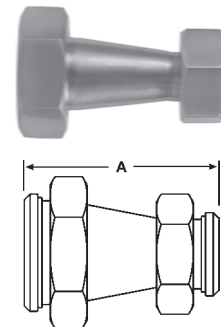


Bevel Seat Reducers

Plain Bevel Seat x Plain Bevel Seat with Hex Nut Concentric Reducers - B3114F

Tube O.D.	Dimension A	304 Part Number
1½" x 1"	3.438	B3114F-G150100
2" x 1½"	3.468	B3114F-G200150
2½" x 1½"	5.593	B3114F-G250150
3" x 2"	5.656	B3114F-G300200
4" x 2"	9.781	B3114F-G400200

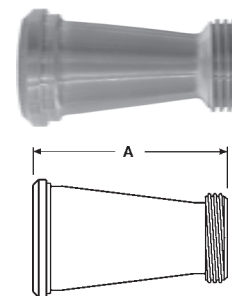
* Hex nut is CF8(304) stainless



D

Plain Bevel Seat x Threaded Bevel Seat Concentric Reducers - B3115F

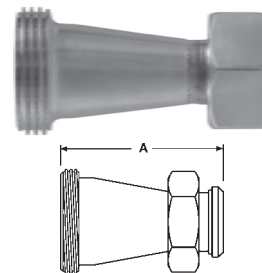
Tube O.D.	Dimension A	304 Part Number
1½" x 1"	3.438	B3115F-G150100
2" x 1"	5.468	B3115F-G200100
2" x 1½"	3.468	B3115F-G200150
2½" x 2"	3.625	B3115F-G250200
3" x 2½"	3.781	B3115F-G300250
4" x 3"	5.793	B3115F-G400300



Threaded Bevel Seat x Plain Bevel Seat with Hex Nut Concentric Reducers - B31TP

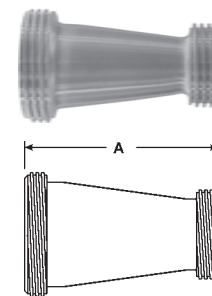
Tube O.D.	Dimension A	304 Part Number
2" x 1½"	3.468	B31TP-G200150
2½" x 2"	3.625	B31TP-G250200
3" x 2"	5.656	B31TP-G300200
3" x 2½"	3.781	B31TP-G300250

* Hex nut is CF8(304) stainless

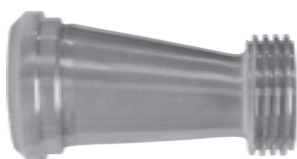


Threaded Bevel Seat x Threaded Bevel Seat Concentric Reducers - B31TT

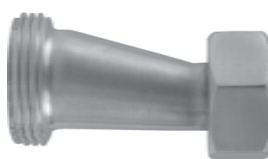
Tube O.D.	Dimension A	304 Part Number
2" x 1½"	3.468	B31TT-G200150
2½" x 2"	3.625	B31TT-G250200
3" x 2"	5.656	B31TT-G300200
3" x 2½"	3.781	B31TT-G300250



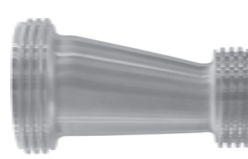
Other types of eccentric reducers with bevel seat fittings are available
call Dixon Sanitary for information



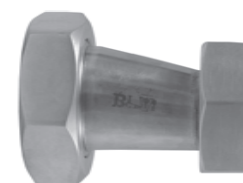
B3215F



B32-TP



B32-TT



B3214F