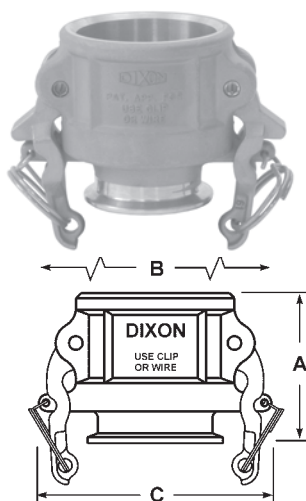


B

Cam and Groove Industrial Transition Fittings

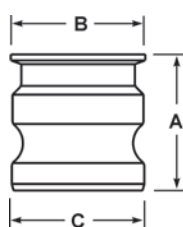
Cam and Groove Coupler x Clamp End



Size	Dimensions			Coupler Part #
	A	B	C	
1"-1½"	2.687	7.875	3.937	RC150SE
2"	2.812	8.250	4.312	RC200SE
3"	3.000	10.000	5.625	RC300SE

- Material: CF8M (316)
- Coupling does not have a sanitary polish

Cam and Groove Adapter x Clamp End



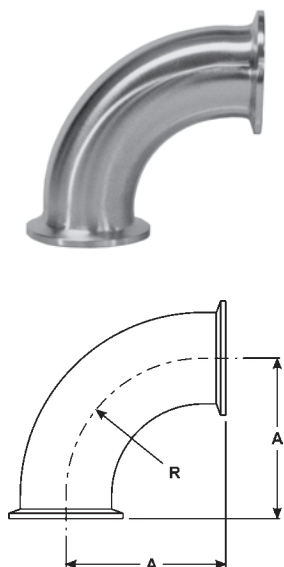
Size	Dimensions			Adapter Part #
	A	B	C	
1"-1½"	2.281	2.000	2.093	RE150SE
2"	2.593	2.500	2.468	RE200SE
3"	2.750	3.562	3.593	RE300SE

- Material: CF8M (316)
- Coupling does not have a sanitary polish

Clamp Elbows



90° Clamp Elbows - B2CMP



Tube O.D.	Dimensions		304 Part Number	316L Part Number
	A	R		
½"	1.625	1.125	---	B2CMP-R50
¾"	1.625	1.125	---	B2CMP-R75
½"	3.500	1.125	---	B2CMPL-R50
¾"	3.500	1.125	---	B2CMPL-R75
1"	2.000	1.500	B2CMP-G100	B2CMP-R100
1½"	2.750	2.250	B2CMP-G150	B2CMP-R150
2"	3.500	3.000	B2CMP-G200	B2CMP-R200
2½"	4.250	3.750	B2CMP-G250	B2CMP-R250
3"	5.000	4.500	B2CMP-G300	B2CMP-R300
4"	6.625	6.000	B2CMP-G400	B2CMP-R400
6"	9.875	9.000	B2CMP-G600	B2CMP-R600
8"	12.875	12.000	B2CMP-G800	---
10"	15.875	15.000	B2CMP-G1000	---
12"	18.875	18.000	B2CMP-G1200	---