

CM-Series Industrial Mold Interchange (Valved Coupler)



(Female Thread)

Part Number	Body Size	Thread Size	Body Material	Weight (lb)	List Price	Bag Qty	Pack Qty
2CMF1-B	1/4"	1/8"-27 NPT	brass	0.07	\$7.76	10	100
3CMF2-B	3/8"	1/4"-18 NPT	brass	0.21	11.28	10	50

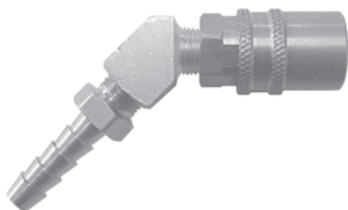
CM-Series Industrial Mold Interchange (Valved Coupler)



(Standard & Push-Loc Hose Barb)

Part Number	Body Size	Barb Configuration	Body Material	Weight (lb)	List Price	Bag Qty	Pack Qty
2CMS2-B	1/4"	1/4" Hose Barb	brass	0.10	\$9.16	10	100
2CMB2-B	1/4"	1/4" Push-Loc	brass	0.10	11.11	10	100
2CMS2.5-B	1/4"	5/16" Hose Barb	brass	0.10	9.16	10	100
2CMS3-B	1/4"	3/8" Hose Barb	brass	0.10	13.47	10	100
2CMB3-B	1/4"	3/8" Push-Loc	brass	0.13	13.74	10	100
3CMS3-B	3/8"	3/8" Hose Barb	brass	0.27	13.74	10	50
3CMB3-B	3/8"	3/8" Push-Loc	brass	0.29	14.45	10	50
3CMS4-B	3/8"	1/2" Hose Barb	brass	0.28	13.74	10	50
3CMB4-B	3/8"	1/2" Push-Loc	brass	0.30	14.45	10	50

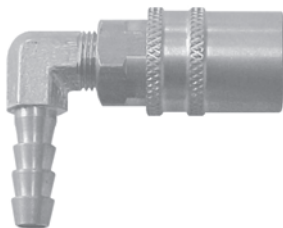
CM-Series Industrial Mold Interchange (Valved 45° Coupler)



(Standard & Push-Loc Hose Barb)

Part Number	Body Size	Barb Configuration	Body Material	Weight (lb)	List Price	Bag Qty	Pack Qty
2CM4S2-B	1/4"	1/4" Hose Barb	brass	0.13	\$13.74	10	100
2CM4B2-B	1/4"	1/4" Push-Loc	brass	0.14	14.80	10	100
2CM4S2.5-B	1/4"	5/16" Hose Barb	brass	0.13	13.74	10	100
2CM4S3-B	1/4"	3/8" Hose Barb	brass	0.14	13.74	10	100
2CM4B3-B	1/4"	3/8" Push-Loc	brass	0.17	14.80	10	100
3CM4S3-B	3/8"	3/8" Hose Barb	brass	0.36	19.38	10	50
3CM4B3-B	3/8"	3/8" Push-Loc	brass	0.36	22.39	10	50
3CM4S4-B	3/8"	1/2" Hose Barb	brass	0.36	19.38	10	50
3CM4B4-B	3/8"	1/2" Push-Loc	brass	0.40	22.39	10	50

CM-Series Industrial Mold Interchange (Valved 90° Coupler)



(Standard & Push-Loc Hose Barb)

Part Number	Body Size	Barb Configuration	Body Material	Weight (lb)	List Price	Bag Qty	Pack Qty
2CM9S2-B	1/4"	1/4" Hose Barb	brass	0.14	\$15.51	10	100
2CM9B2-B	1/4"	1/4" Push-Loc	brass	0.14	16.04	10	100
2CM9S2.5-B	1/4"	5/16" Hose Barb	brass	0.14	15.51	10	100
2CM9S3-B	1/4"	3/8" Hose Barb	brass	0.15	15.51	10	100
2CM9B3-B	1/4"	3/8" Push-Loc	brass	0.17	16.04	10	100
3CM9S3-B	3/8"	3/8" Hose Barb	brass	0.31	19.57	10	50
3CM9B3-B	3/8"	3/8" Push-Loc	brass	0.37	23.25	10	50
3CM9S4-B	3/8"	1/2" Hose Barb	brass	0.35	19.57	10	50
3CM9B4-B	3/8"	1/2" Push-Loc	brass	0.39	23.25	10	50



Attention Required!

Dixon Push-Loc hose barbs are designed to be used with Push-Loc hose only and do not require clamps or ferrules to securely attach to the hose. The Dixon Push-Loc hose barb is compatible with most Push-Loc hoses and are easy to assemble.