

## WS-Series High Pressure Wingstyle (Coupler)

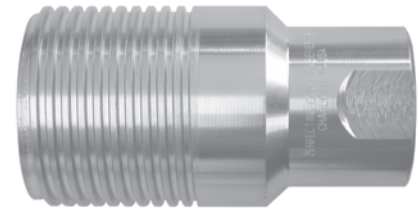
Part Number	Body Size	Thread Size	Body Material	Wrench Flats	List Price	Bag Qty	Pack Qty
6WSF4	3/4"	1/2"-14 NPTF	steel	Hex	\$120.38	---	5
6WSF6	3/4"	3/4"-14 NPTF	steel	Yes	111.63	---	5
6WSF6-WF	3/4"	3/4"-14 NPTF	steel	Yes	115.07	---	5
6WSF6-SS	3/4"	3/4"-14 NPTF	316 SS	Yes	1687.53	---	5
6WSOF6	3/4"	1-1/16"-12 ORB	steel	No	118.74	---	5
6WSBF6	3/4"	G3/4"	steel	No	111.63	---	5
6WSBF6-SS	3/4"	G3/4"	316 SS	No	1687.53	---	5
8WSF8	1"	1"-11 1/2 NPTF	steel	Yes	167.11	---	5
8WSF8-WF	1"	1"-11 1/2 NPTF	steel	Yes	170.38	---	5
8WSF8-SS	1"	1"-11 1/2 NPTF	316 SS	Yes	2118.46	---	5
8WSOF8	1"	1-5/16"-12 ORB	steel	No	176.09	---	5
8WSBF8	1"	G1"	steel	No	167.11	---	5
8WSBF8-SS	1"	G1"	316 SS	No	2118.46	---	5
10WSF10	1-1/4"	1-1/4"-11 1/2 NPTF	steel	No	285.80	---	1
10WSF10-WF	1-1/4"	1-1/4"-11 1/2 NPTF	steel	Yes	290.77	---	1
10WSF10-SS	1-1/4"	1-1/4"-11 1/2 NPTF	316 SS	No	3175.37	---	1
10WSOF10	1-1/4"	1-5/8"-12 ORB	steel	No	293.01	---	1
10WSBF10	1-1/4"	G1-1/4"	steel	No	285.80	---	1
10WSBF10-SS	1-1/4"	G1-1/4"	316 SS	No	3175.37	---	1
12WSF12	1-1/2"	1-1/2"-11 1/2 NPTF	steel	No	419.07	---	1
12WSF12-SS	1-1/2"	1-1/2"-11 1/2 NPTF	316 SS	No	3846.92	---	1
12WSOF12	1-1/2"	1-7/8"-12 ORB	steel	No	429.45	---	1
12WSBF12	1-1/2"	G1-1/2"	steel	No	419.07	---	1
12WSBF12-SS	1-1/2"	G1-1/2"	steel	No	3846.92	---	1
16WSF16	2"	2"-11 1/2 NPTF	steel	No	596.99	---	1
16WSF16-SS	2"	2"-11 1/2 NPTF	316 SS	No	5003.66	---	1
16WSOF16	2"	2-1/2"-12 ORB	steel	No	601.01	---	1
16WSBF16	2"	G2"	steel	No	596.99	---	1
16WSBF16-SS	2"	G2"	316 SS	No	5003.66	---	1



(Female Thread)

## WS-Series High Pressure Wingstyle (Nipple)

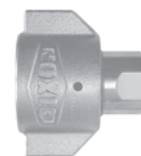
Part Number	Body Size	Thread Size	Body Material	Wrench Flats	List Price	Bag Qty	Pack Qty
WS6F4	3/4"	1/2"-14 NPTF	steel	Hex	\$114.86	---	5
WS6F6	3/4"	3/4"-14 NPTF	steel	Yes	106.11	---	5
WS6F6-WF	3/4"	3/4"-14 NPTF	steel	Yes	109.55	---	5
WS6F6-SS	3/4"	3/4"-14 NPTF	316 SS	Yes	1379.09	---	5
WSOF6	3/4"	1-1/16"-12 ORB	steel	No	113.22	---	5
WS6BF6	3/4"	G3/4"	steel	No	106.11	---	5
WS6BF6-SS	3/4"	G3/4"	316 SS	No	1379.09	---	5
WS8F8	1"	1"-11 1/2 NPTF	steel	No	127.95	---	5
WS8F8-WF	1"	1"-11 1/2 NPTF	steel	Yes	131.22	---	5
WS8F8-SS	1"	1"-11 1/2 NPTF	316 SS	Yes	1596.82	---	5
WSF8OF8	1"	1-5/16"-12 ORB	steel	No	136.93	---	5
WS8BF8	1"	G1"	steel	No	127.95	---	5
WS8BF8-SS	1"	G1"	316 SS	No	1596.82	---	5
WS10F10	1-1/4"	1-1/4"-11 1/2 NPTF	steel	No	226.57	---	1
WS10F10-WF	1-1/4"	1-1/4"-11 1/2 NPTF	steel	Yes	231.54	---	1
WS10F10-SS	1-1/4"	1-1/4"-11 1/2 NPTF	316 SS	No	2050.44	---	1
WS10OF10	1-1/4"	1-5/8"-12 ORB	steel	No	233.78	---	1
WS10BF10	1-1/4"	G1-1/4"	steel	No	226.57	---	1
WS10BF10-SS	1-1/4"	G1-1/4"	316 SS	No	2050.44	---	1
WS12F12	1-1/2"	1-1/2"-11 1/2 NPTF	steel	No	353.90	---	1
WS12F12-SS	1-1/2"	1-1/2"-11 1/2 NPTF	316 SS	No	2504.06	---	1
WS12OF12	1-1/2"	1-7/8"-12 ORB	steel	No	364.28	---	1
WS12BF12	1-1/2"	G1-1/2"	steel	No	353.90	---	1
WS12BF12-SS	1-1/2"	G1-1/2"	steel	No	2504.06	---	1
WS16F16	2"	2"-11 1/2 NPTF	steel	No	573.77	---	1
WS16F16-SS	2"	2"-11 1/2 NPTF	316 SS	No	3261.66	---	1
WS16OF16	2"	2-1/2"-12 ORB	steel	No	577.79	---	1
WS16BF16	2"	G2"	steel	No	573.77	---	1
WS16BF16-SS	2"	G2"	316 SS	No	3261.66	---	1



(Female Thread)

## WS-Series High Pressure Wingstyle (View-Port Option Adder)

Feature Description	Body Size	List Price
The connection view-port option has two view-ports drilled 180° apart to provide a visual confirmation of complete connection. This feature will allow contaminants to enter the inner-thread region while connected, which must be taken into consideration, especially in cold climates. (add -VP suffix to couplings number)	3/4"	\$20.00
	1"	20.00
	1-1/4"	20.00
	1-1/2"	24.00
	2"	28.00



**WS-Series**